



12+/- Acre Home/Camp Site Lawrence County, MS



\$36,900

The 12+/- acre tract in Lawrence County, MS features rolling terrain with an old logging road that weaves its way from the front to the back of the property. The property is covered in mature pine and hardwoods. This would be an excellent location for a home-site or an out of town person who is looking for that ideal location to put a camp. This property also has a spring fed creek and is located only a couple of minutes outside of Monticello. This property is priced to move! Call Eli today to schedule a viewing!

Directions from Brookhaven, MS: Travel approximately 20 miles on Hwy 84 to Monticello. Turn right on Roan Ready Road and travel approximately 3/4 mile. The property will be on your left, look for the Tom Smith Land and Homes sign.



Call me today!

ELI FERGUSON, REALTOR®
Eli@TomSmithLand.com
601.990.5070 office | 601.757.7117 cell



Expect More. Get More.

TomSmithLandandHomes.com

Information is believed to be accurate but not guaranteed.



Call me today!

ELI FERGUSON, REALTOR®
Eli@TomSmithLand.com
601.990.5070 office | 601.757.7117 cell



TomSmithLandandHomes.com

Information is believed to be accurate but not guaranteed.



LandReport
2011-2020
AMERICAN
BEST
BROKERAGES

Proud to be
C2EX
endorsed!

call me today!

ELI FERGUSON, REALTOR®
Eli@TomSmithLand.com
601.990.5070 office | 601.757.7117 cell



TomSmithLandandHomes.com

Information is believed to be accurate but not guaranteed.



Call me today!

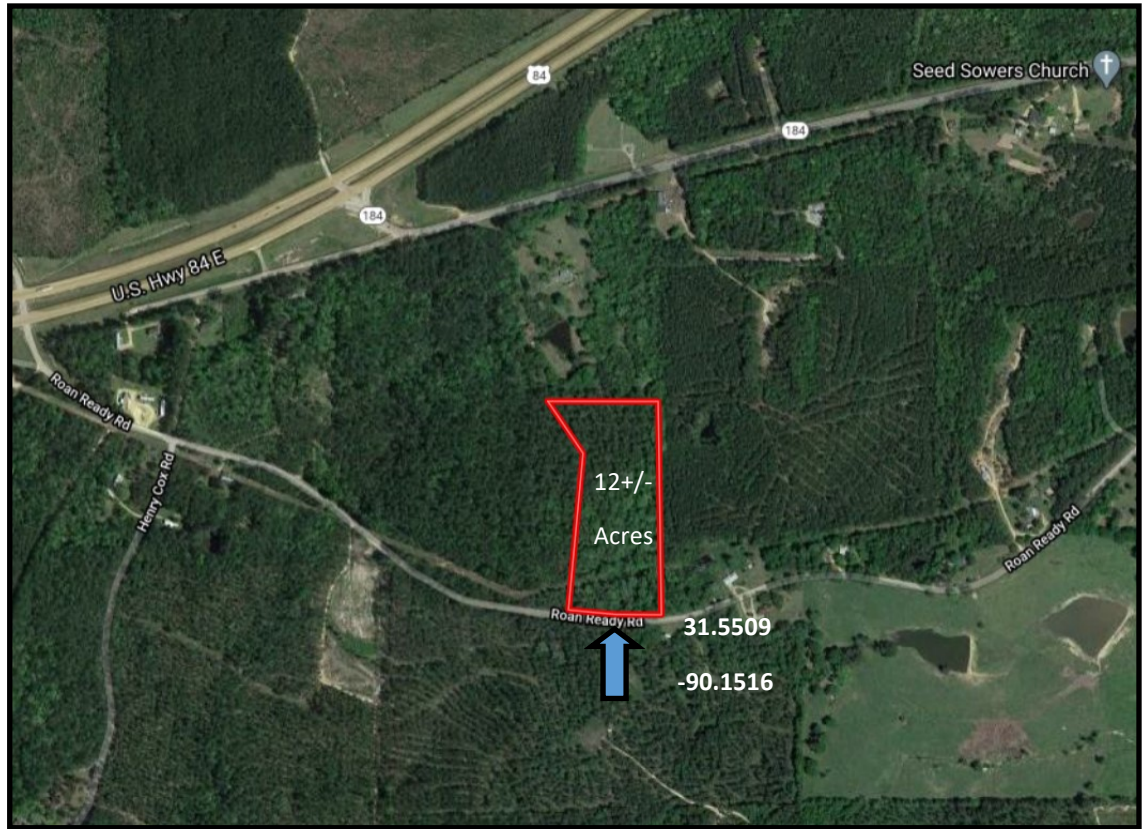
ELI FERGUSON, REALTOR®
Eli@TomSmithLand.com
601.990.5070 office | 601.757.7117 cell



TomSmithLandandHomes.com

Information is believed to be accurate but not guaranteed.

Aerial Map



Flood Map



Call me today!

ELI FERGUSON, REALTOR®
Eli@TomSmithLand.com
601.990.5070 office | 601.757.7117 cell

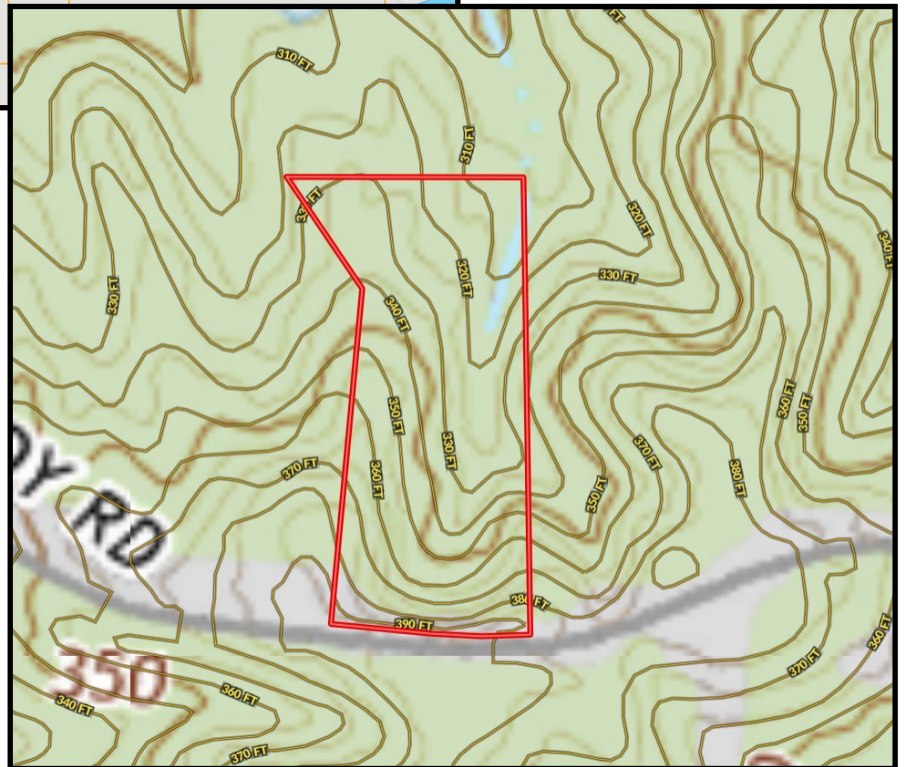


TomSmithLandandHomes.com

Information is believed to be accurate but not guaranteed.



Ownership
Map



Topo
Map



LandReport
2011-2020
AMERICAN
BEST
BROKERAGES

Proud to be
C2EX
endorsed!

call me today!

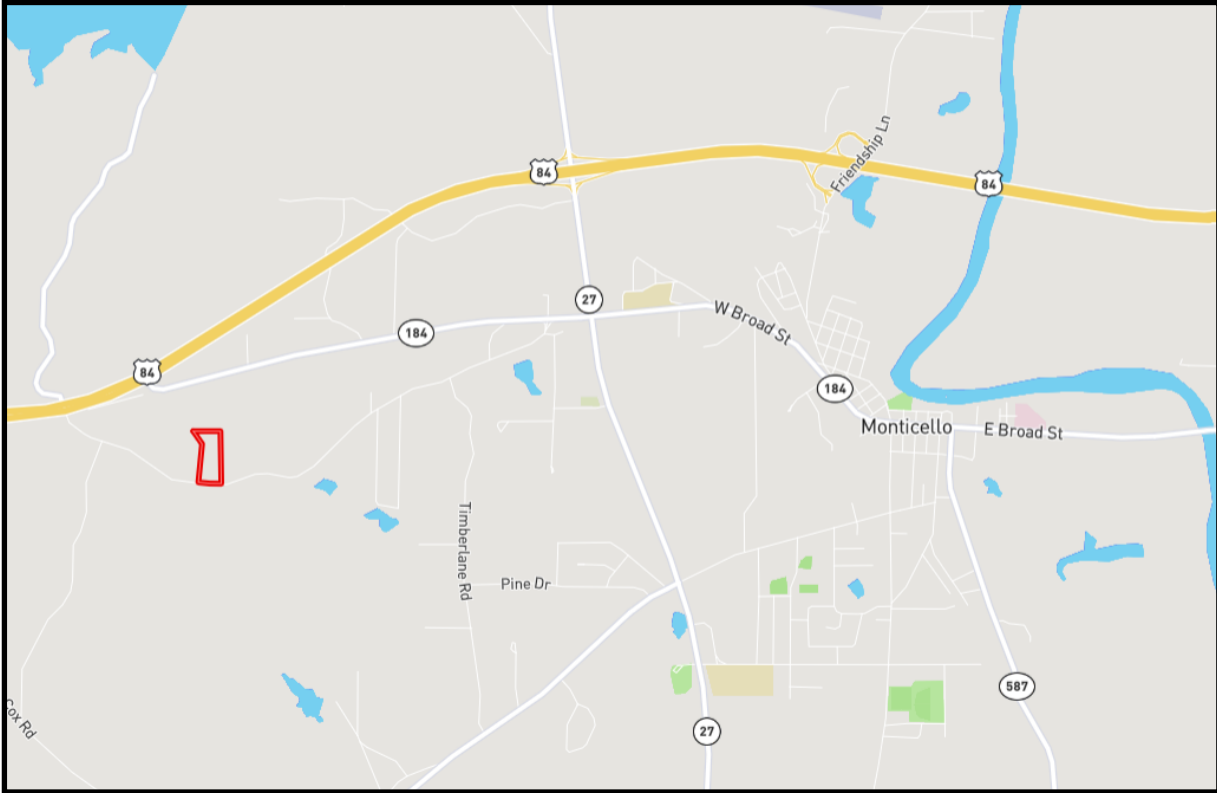
ELI FERGUSON, REALTOR®
Eli@TomSmithLand.com
601.990.5070 office | 601.757.7117 cell



Expect More. Get More.

TomSmithLandandHomes.com

Information is believed to be accurate but not guaranteed.



Directional Map

Directions from Brookhaven, MS: Travel approximately 20 miles on Hwy 84 to Monticello. Turn right on Roan Ready Road and travel approximately 3/4 mile. The property will be on your left, look for the Tom Smith Land and Homes sign.



call me today!

ELI FERGUSON, REALTOR®
Eli@TomSmithLand.com
601.990.5070 office | 601.757.7117 cell



TomSmithLandandHomes.com

Information is believed to be accurate but not guaranteed.