

## Beautiful Home on 6.34+/- Acres Pike County, MS



**\$479,900**

3030 Hwy 24 W Summit, MS 39666

Are you looking for a private property with a home and room to roam in Pike County, MS? Come see this beautiful four bedroom, three and a half bath home situated on 6.34+/- acres in Summit just minutes from Park Lane Academy and all the conveniences of McComb. The well-kept, newly updated home features new countertops, fresh paint, an oversized laundry room, a ½ bath for guests, two cozy living spaces with a fireplace as the focal point in each and a recreation room, which could be a fourth bedroom, on the second level. The master suite is an absolute must see! A floor-to-ceiling walk-in pantry in the kitchen is sure to catch her eye while the metal, enclosed shop out back will grab his attention. Oh the possibilities...this home *really does have it all*. This property is minutes to the Louisiana state line, 45 minutes to Hammond and approximately 90 minutes to Baton Rouge. Call Sabrina to schedule your private viewing today!

Directions from I-55 South in McComb, MS: Take the Liberty, MS exit and the home will be on your right in less than one mile.



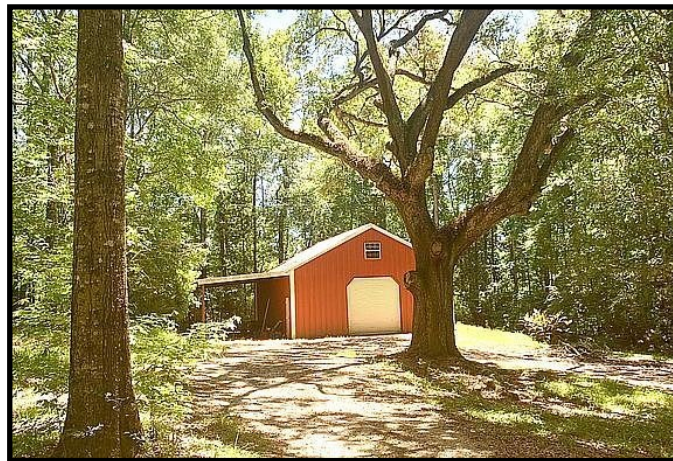
*call me today!*

**SABRINA WOLFE**, REALTOR®  
Sabrina@TomSmithHomes.com  
601.990.5070 office | 601.754.3763 cell



**TomSmithLandandHomes.com**

Information is believed to be accurate but not guaranteed.



LandReport  
2010-2021  
AMERICAN  
BEST  
BROKERAGES

*Call me today!*

**SABRINA WOLFF, REALTOR®**  
Sabrina@TomSmithHomes.com  
601.990.5070 office | 601.754.3763 cell



Expect More. Get More.

**TomSmithLandandHomes.com**

Information is believed to be accurate but not guaranteed.



*Call me today!*

**SABRINA WOLFE, REALTOR®**  
Sabrina@TomSmithHomes.com  
601.990.5070 office | 601.754.3763 cell



**TomSmithLandandHomes.com**

Information is believed to be accurate but not guaranteed.



2010-2021  
AMERICAN  
BEST  
BROKERAGES

*Call me today!*

**SABRINA WOLFE**, REALTOR®  
Sabrina@TomSmithHomes.com  
601.990.5070 office | 601.754.3763 cell



Expect More. Get More.

**TomSmithLandandHomes.com**

Information is believed to be accurate but not guaranteed.



*Call me today!*

**SABRINA WOLFE, REALTOR®**  
Sabrina@TomSmithHomes.com  
601.990.5070 office | 601.754.3763 cell



**TomSmithLandandHomes.com**

Information is believed to be accurate but not guaranteed.

# Aerial Map



LandReport  
2010-2021  
AMERICA'S  
**BEST**  
BROKERAGES

*call me today!*

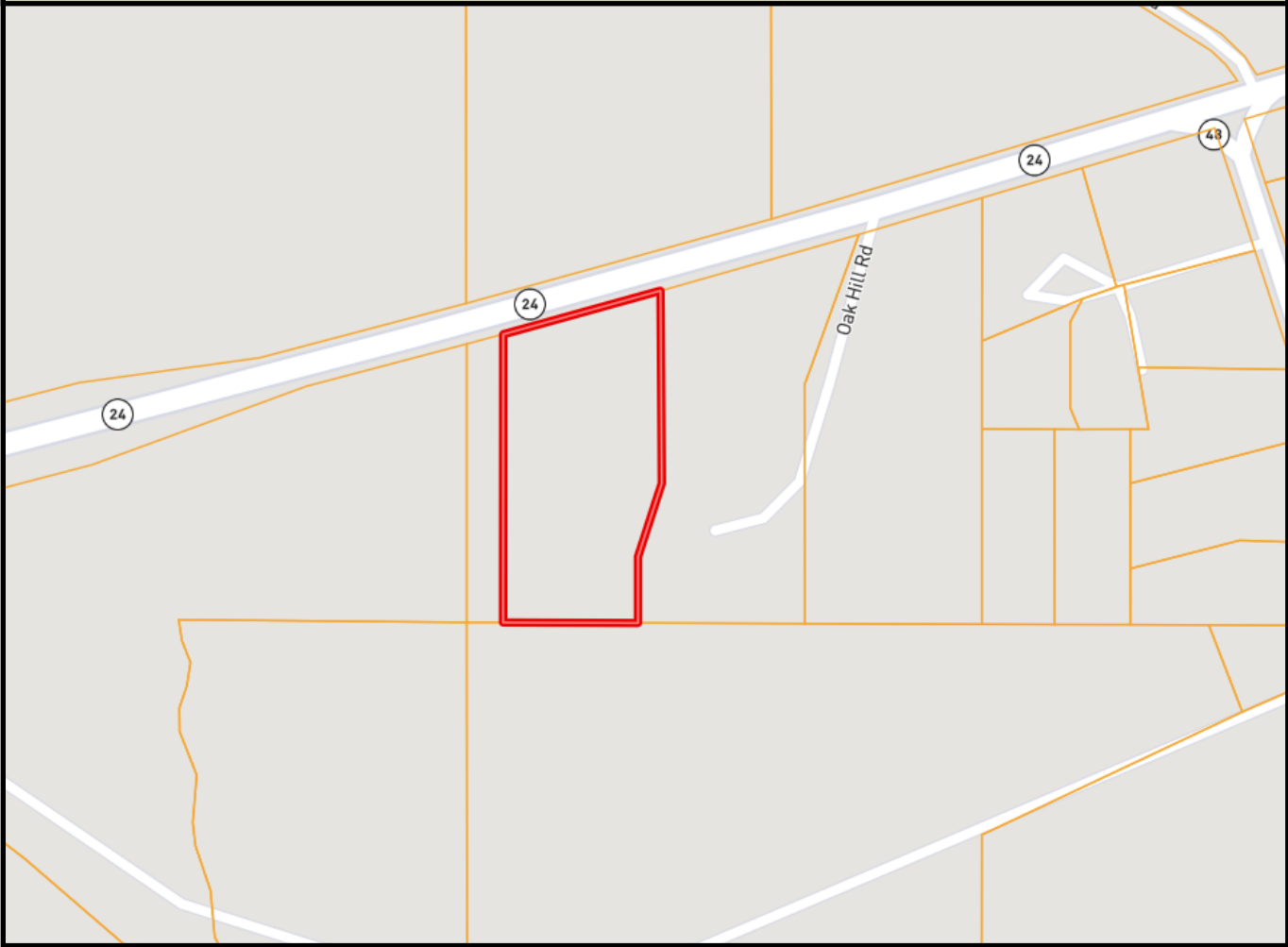
**SABRINA WOLFF**, REALTOR®  
Sabrina@TomSmithHomes.com  
601.990.5070 office | 601.754.3763 cell



**TomSmithLandandHomes.com**

Information is believed to be accurate but not guaranteed.

# Ownership Map



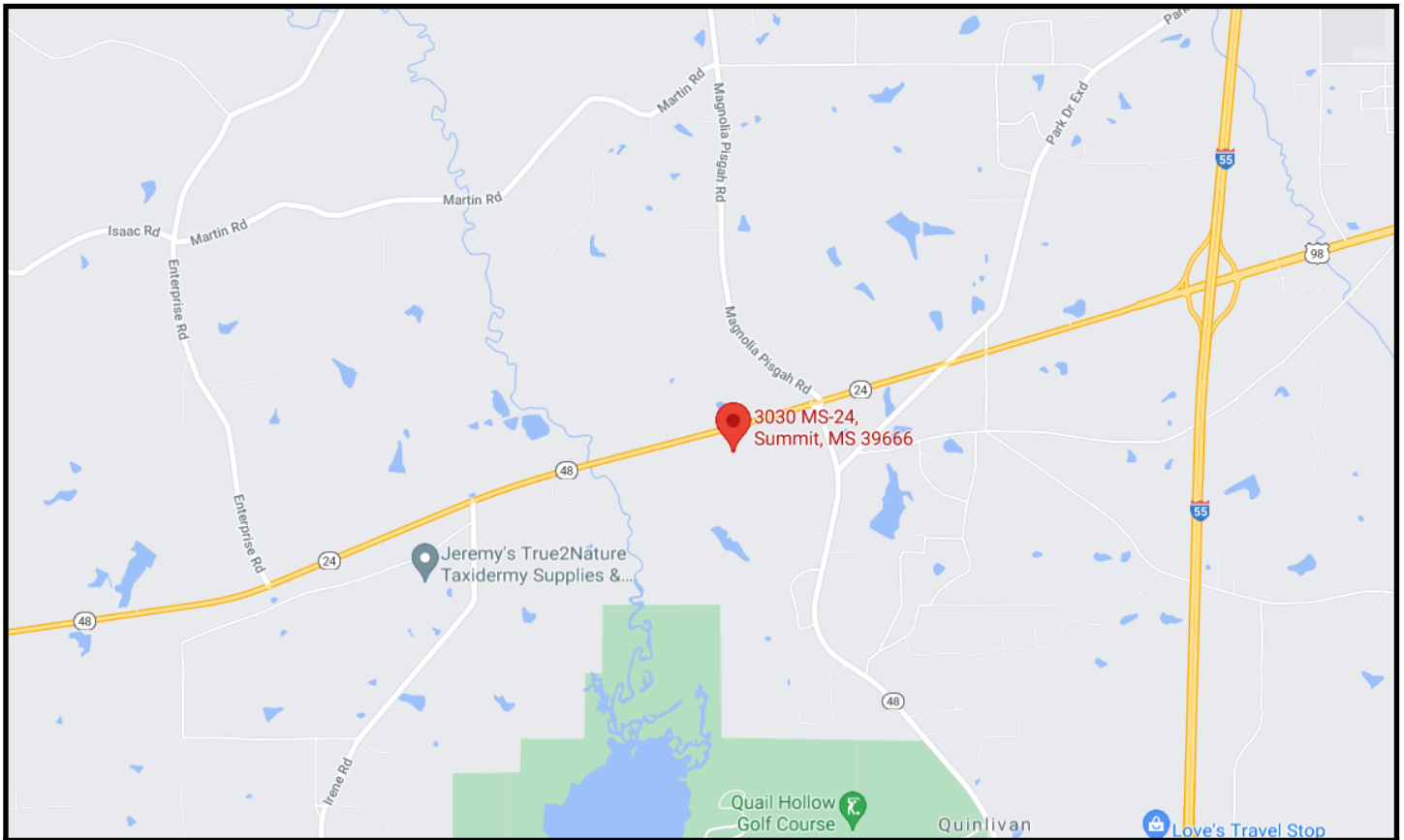
*call me today!*

**SABRINA WOLFF**, REALTOR®  
Sabrina@TomSmithHomes.com  
601.990.5070 office | 601.754.3763 cell



**TomSmithLandandHomes.com**

Information is believed to be accurate but not guaranteed.



## Directional Map

3030 Hwy 24 W Summit, MS 39666

Directions from I-55 South in McComb, MS: Take the Liberty, MS exit and the home will be on your right in less than one mile.



*Call me today!*

**SABRINA WOLFF**, REALTOR®

Sabrina@TomSmithHomes.com

601.990.5070 office | 601.754.3763 cell



Expect More. Get More.



**TomSmithLandandHomes.com**

Information is believed to be accurate but not guaranteed.