

Beautiful Home on 6.34+/- Acres Pike County, MS



3030 Hwy 24 W Summit, MS 39666

Are you looking for a private property with a home and room to roam in Pike County, MS? Come see this beautiful four bedroom, three and a half bath home situated on 6.34+/- acres in Summit just minutes from Park Lane Academy and all the conveniences of McComb. The well-kept, newly updated home features new countertops, fresh paint, an oversized laundry room, a ½ bath for guests, two cozy living spaces with a fireplace as the focal point in each and a recreation room, which could be a fourth bedroom, on the second level. The master suite is an absolute must see! A floor-to-ceiling walk-in pantry in the kitchen is sure to catch her eye while the metal, enclosed shop out back will grab his attention. Oh the possibilities...this home *really does have it all*. This property is minutes to the Louisiana state line, 45 minutes to Hammond and approximately 90 minutes to Baton Rouge. Call Sabrina to schedule your private viewing today!

Directions from I-55 South in McComb, MS: Take the Liberty, MS exit and the home will be on your right in less than one mile.



call me today!

SABRINA WOLFE, REALTOR®
Sabrina@TomSmithHomes.com
601.990.5070 office | 601.754.3763 cell



TomSmithLandandHomes.com

Information is believed to be accurate but not guaranteed.



Call me today!

SABRINA WOLFF, REALTOR®
Sabrina@TomSmithHomes.com
601.990.5070 office | 601.754.3763 cell



TomSmithLandandHomes.com

Information is believed to be accurate but not guaranteed.



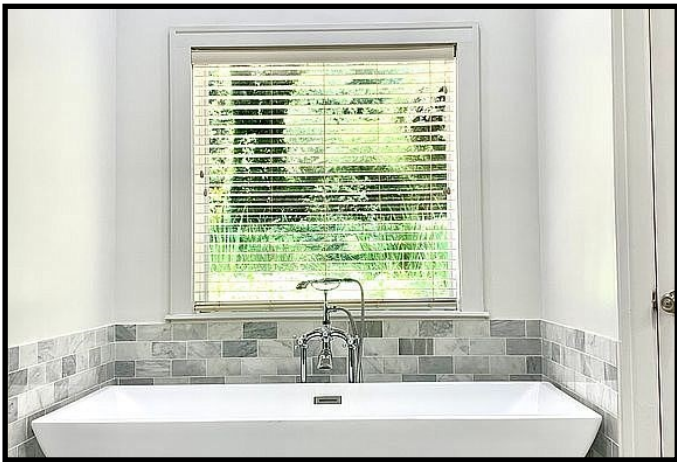
Call me today!

SABRINA WOLFE, REALTOR®
Sabrina@TomSmithHomes.com
601.990.5070 office | 601.754.3763 cell



TomSmithLandandHomes.com

Information is believed to be accurate but not guaranteed.



Call me today!

SABRINA WOLFF, REALTOR®
Sabrina@TomSmithHomes.com
601.990.5070 office | 601.754.3763 cell



TomSmithLandandHomes.com

Information is believed to be accurate but not guaranteed.



Call me today!

SABRINA WOLFF, REALTOR®
Sabrina@TomSmithHomes.com
601.990.5070 office | 601.754.3763 cell



TomSmithLandandHomes.com

Information is believed to be accurate but not guaranteed.

Aerial Map



call me today!

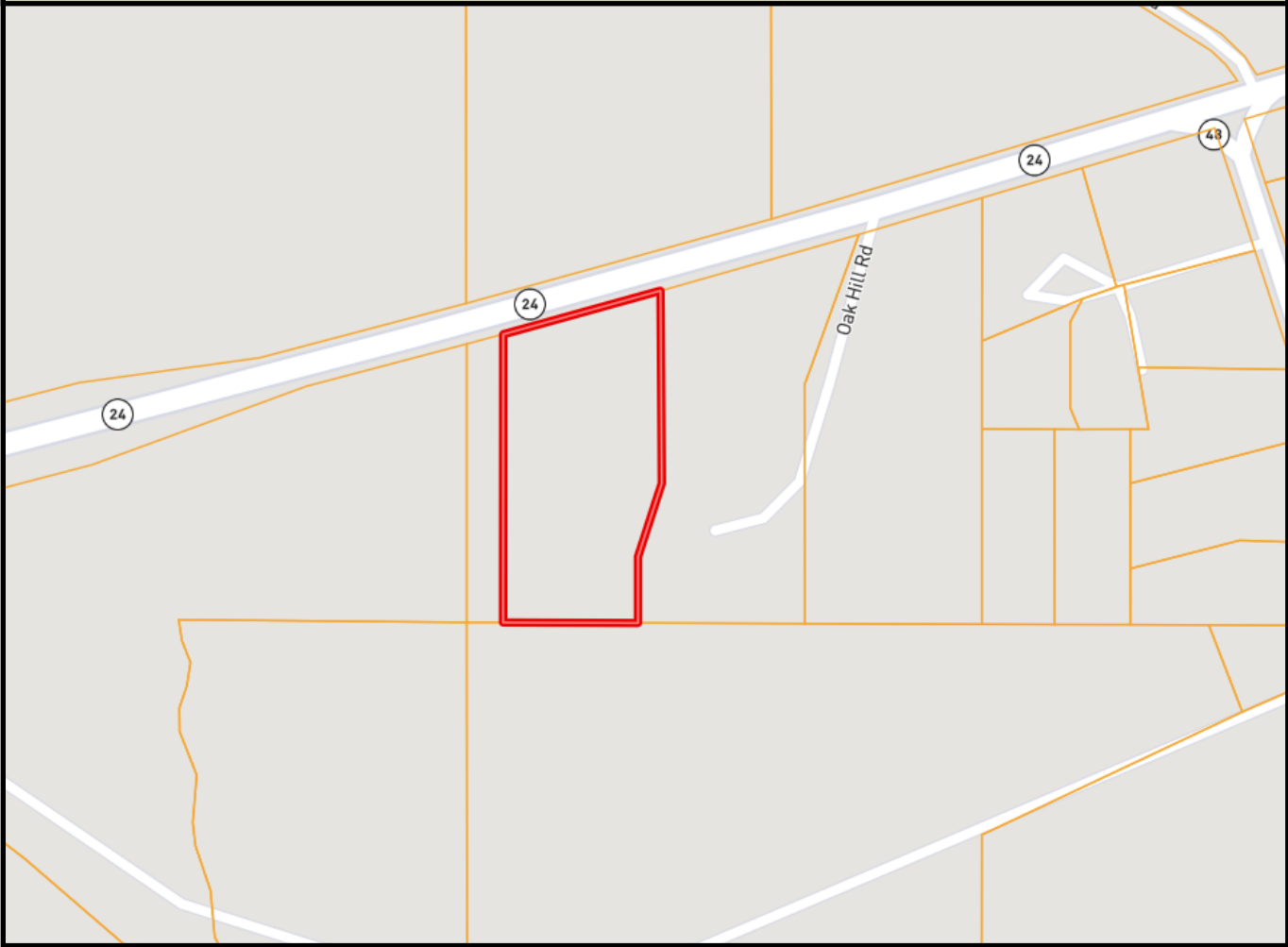
SABRINA WOLFF, REALTOR®
Sabrina@TomSmithHomes.com
601.990.5070 office | 601.754.3763 cell



TomSmithLandandHomes.com

Information is believed to be accurate but not guaranteed.

Ownership Map



LandReport
2010-2021
AMERICAN
BEST
BROKERAGES

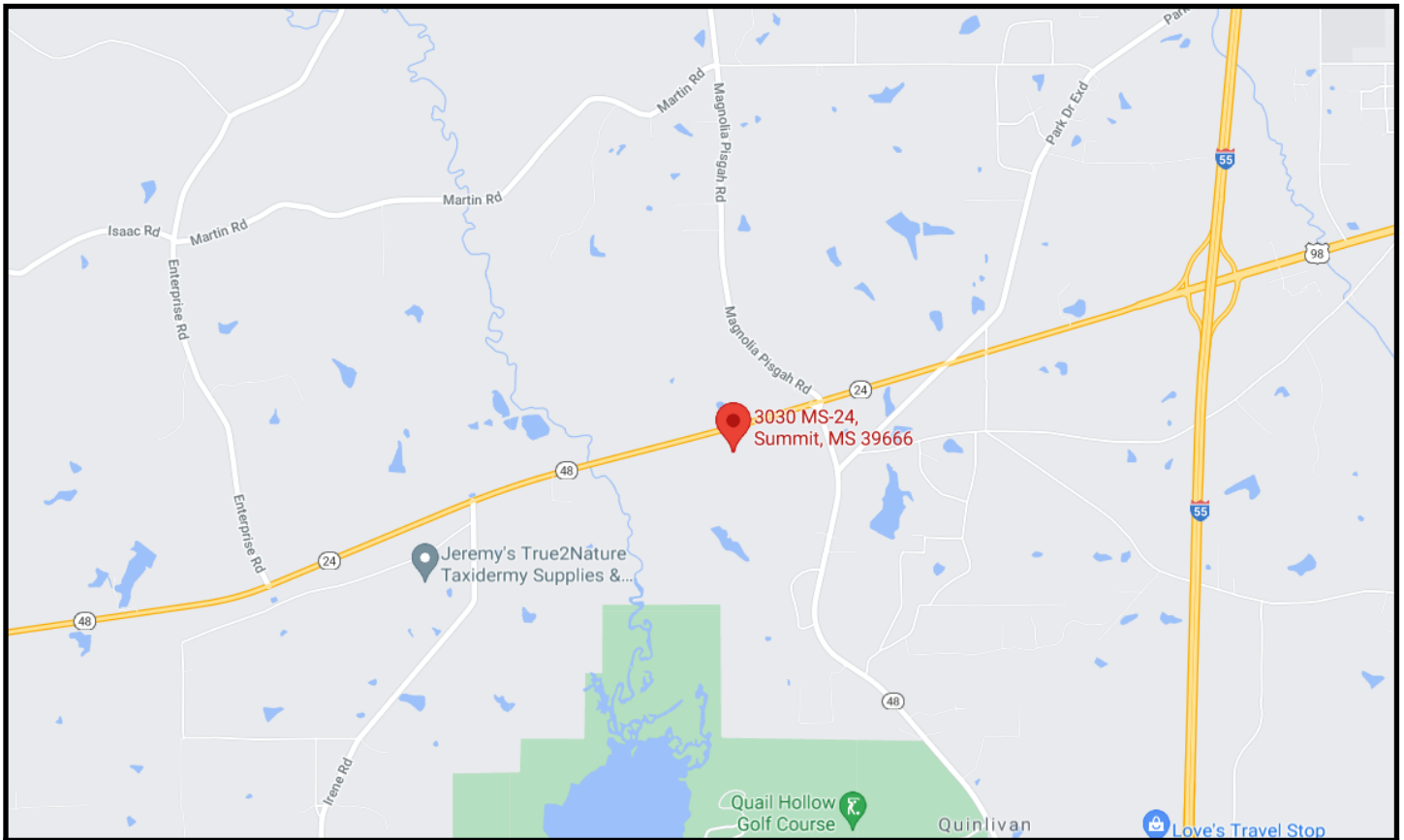
call me today!

SABRINA WOLFF, REALTOR®
Sabrina@TomSmithHomes.com
601.990.5070 office | 601.754.3763 cell



TomSmithLandandHomes.com

Information is believed to be accurate but not guaranteed.



Directional Map

3030 Hwy 24 W Summit, MS 39666

Directions from I-55 South in McComb, MS: Take the Liberty, MS exit and the home will be on your right in less than one mile.



Call me today!



SABRINA WOLFF, REALTOR®
Sabrina@TomSmithHomes.com
601.990.5070 office | 601.754.3763 cell



Expect More. Get More.

TomSmithLandandHomes.com

Information is believed to be accurate but not guaranteed.