

Home on 18+/- Acres in Franklin County, MS



1381 Log Cabin Road
Roxie, MS 39661

\$210,000

If you are looking for your own little slice of heaven, this 18+/- acre Franklin County, MS property is it!!! An updated, 2013 mobile home offers 1,980+/- square feet with three-bedrooms and two baths. The kitchen is a must see with a built-in refrigerator and copious amount of cabinet space; the living room is large enough for the biggest sectional and tv combo. The master suite, opposite of the other two bedrooms, features tray ceilings with recessed lighting; the bath is complete with a shower, sunken tub, double sink, and large walk-in closet. The 6+/- year cutover surrounding the home is an outdoorsman's dream...some is planted pine and other sections have been allowed to regrow naturally to create an exceptional whitetail habitat. An internal road system provides easy access to the established food plots and box blinds. The area landowners have been managing their deer herd together for years. Call Clif Cannon to schedule a showing today!



call me today!

CLIF CANNON, REALTOR®
Clif@TomSmithLand.com
601.990.5070 office | 601.565.1070 cell



TomSmithLandandHomes.com

Information is believed to be accurate but not guaranteed.



CLIF CANNON, REALTOR®
 Clif@TomSmithLand.com
 601.990.5070 office | 601.565.1070 cell



TomSmithLandandHomes.com

Information is believed to be accurate but not guaranteed.



CLIF CANNON, REALTOR®

Clif@TomSmithLand.com

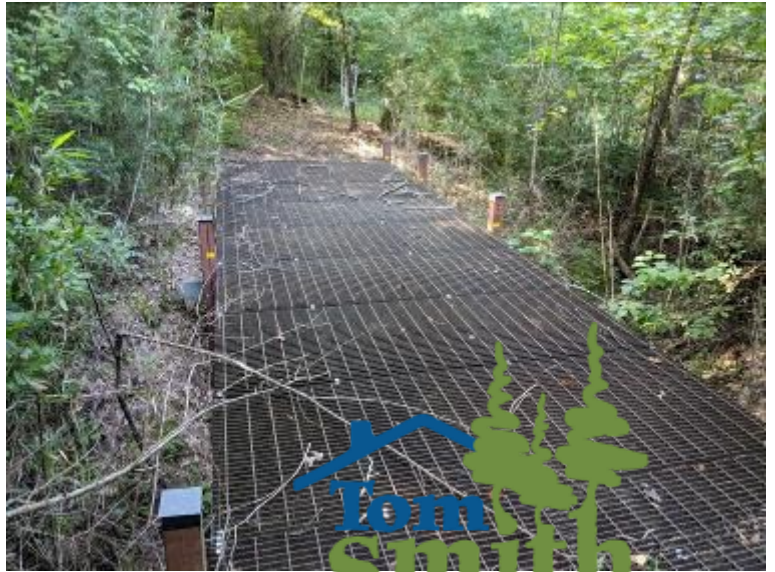
601.990.5070 office | 601.565.1070 cell



Expect More. Get More.

TomSmithLandandHomes.com

Information is believed to be accurate but not guaranteed.



CLIF CANNON, REALTOR®
 Clif@TomSmithLand.com
 601.990.5070 office | 601.565.1070 cell



Expect More. Get More.

TomSmithLandandHomes.com

Information is believed to be accurate but not guaranteed.



Aerial Map

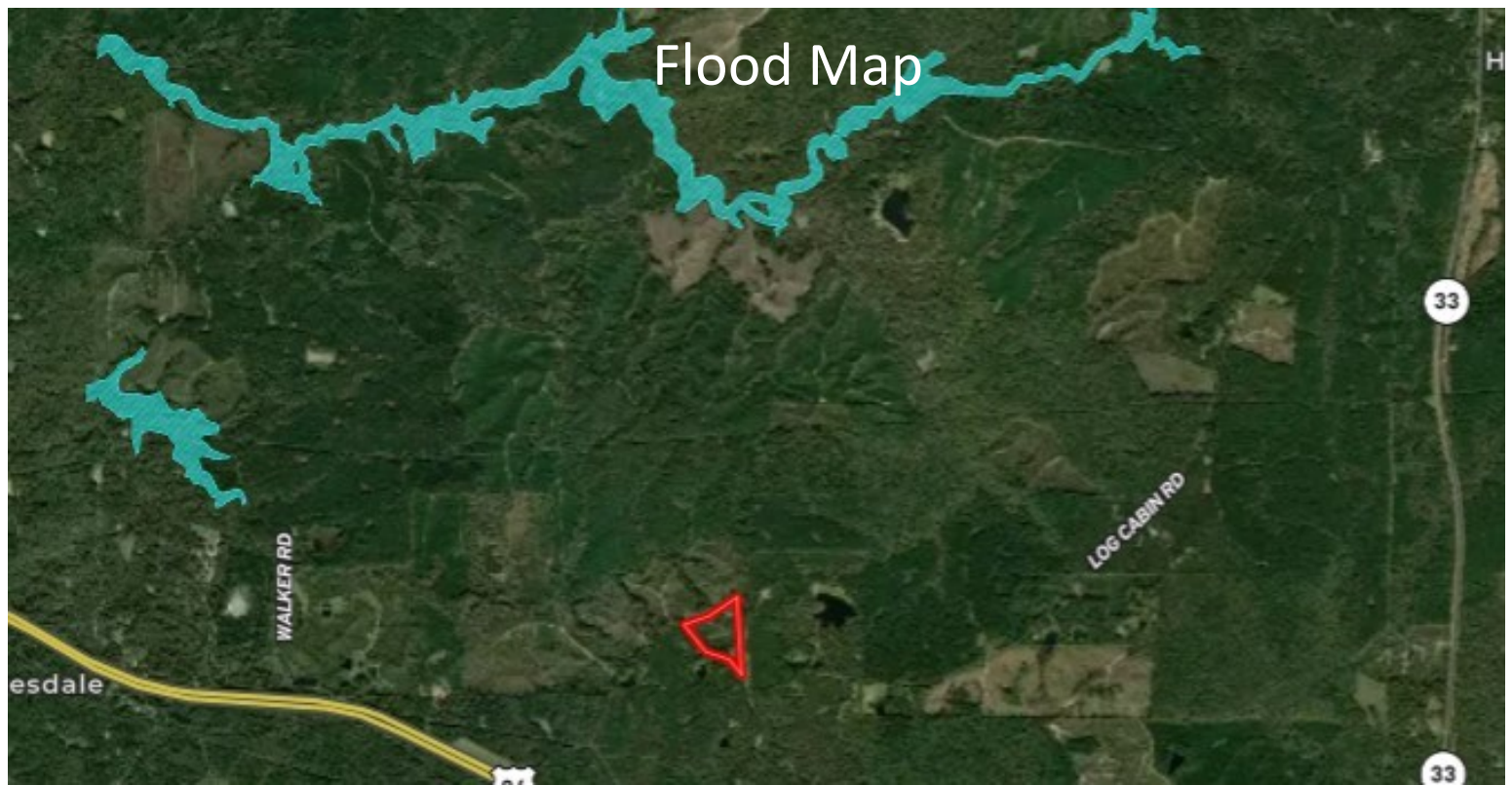


CLIF CANNON, REALTOR®
Clif@TomSmithLand.com
601.990.5070 office | 601.565.1070 cell

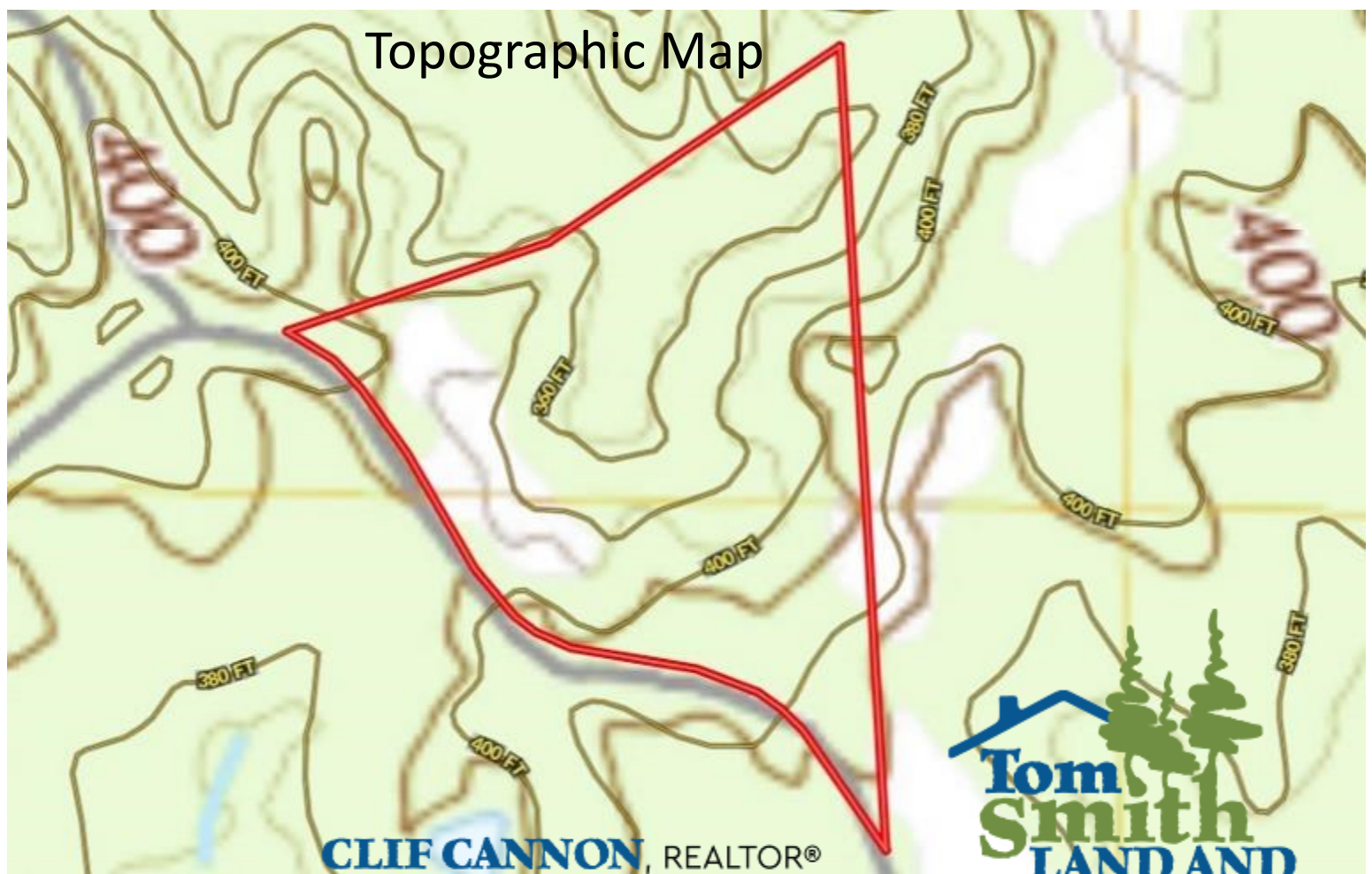


TomSmithLandandHomes.com

Information is believed to be accurate but not guaranteed.



Flood Map



Topographic Map

CLIF CANNON, REALTOR®

Clif@TomSmithLand.com

601.990.5070 office | 601.565.1070 cell

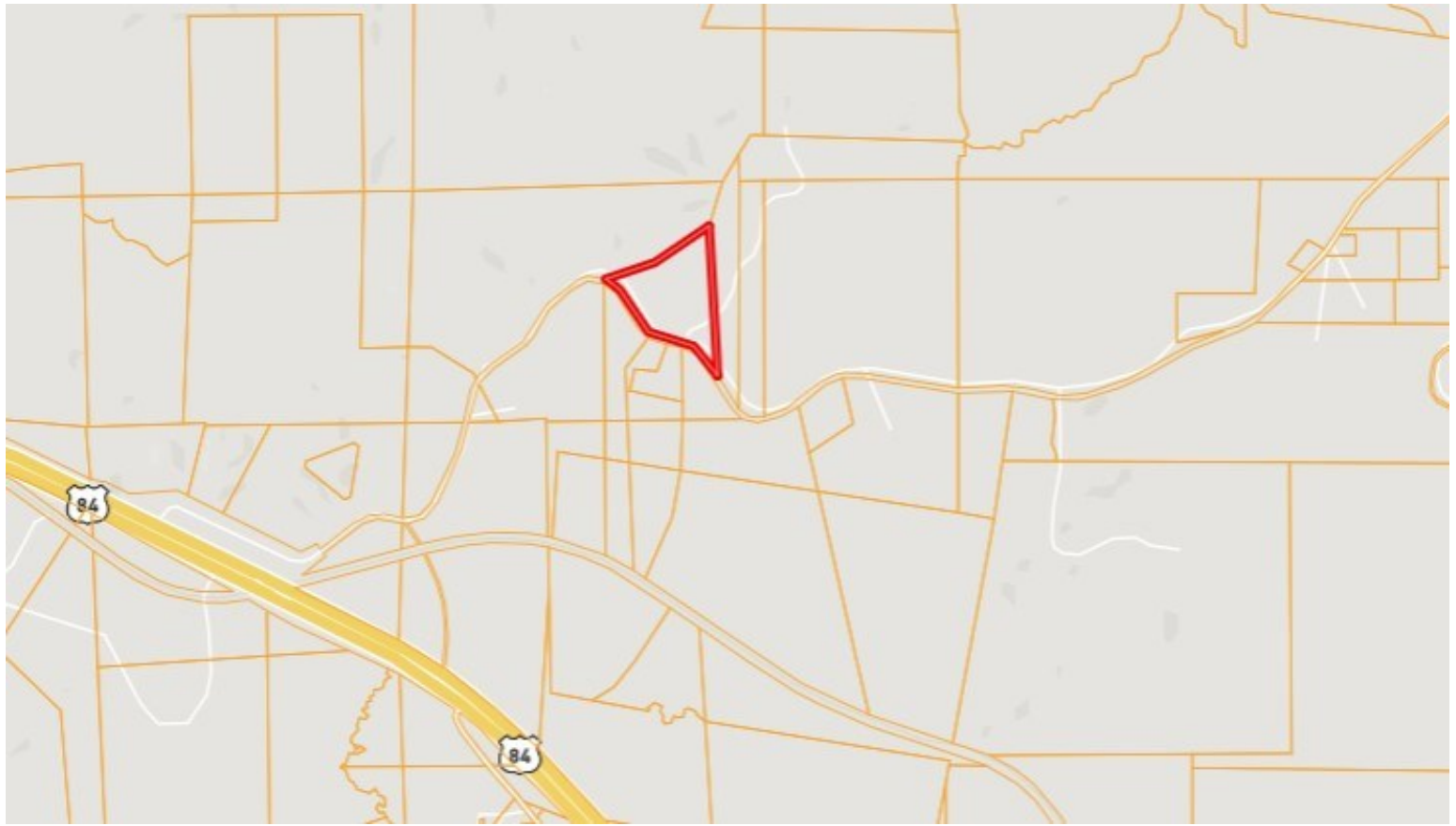


Expect More. Get More.



TomSmithLandandHomes.com

Information is believed to be accurate but not guaranteed.



Ownership Map



CLIF CANNON, REALTOR®
Clif@TomSmithLand.com
601.990.5070 **office** | 601.565.1070 **cell**



TomSmithLandandHomes.com

Information is believed to be accurate but not guaranteed.



Directional Map

Directions from the intersection of US-84 and MS-33 in Roxie, MS: Travel west on US-84 for 3.6 miles. Turn right onto Log Cabin Road and travel for 1.4 miles. The property will be on the left.

1381 Log Cabin Road

Roxie, MS 39661



CLIF CANNON, REALTOR®
Clif@TomSmithLand.com
601.990.5070 office | 601.565.1070 cell



TomSmithLandandHomes.com

Information is believed to be accurate but not guaranteed.