

**HOME SITUATED ON 1.25± ACRES IN
LINCOLN COUNTY, MISSISSIPPI**



2262 Highway 51, Bogue Chitto, MS

\$79,900

Looking for an affordable home in an excellent location? If so this three bedroom two bath home, located in Bogue Chitto, MS right on Hwy 51 directly across from Bogue Chitto School, is perfect for you. The block home sits on 1.25 acres and comes with a shed for storage or various activities behind the house and features both large front and rear porches. Do not miss out on this opportunity. Call Eli Ferguson today!!!

Directions From Bogue Chitto, MS: From the intersection of Hwy 51 and Bogue Chitto Road, travel North on Hwy 51 for .1 miles and the property will be on your left.



Call me today!

ELI FERGUSON, REALTOR®

Eli@TomSmithLand.com

601.990.5070 office | 601.757.7117 cell



Expect More. Get More.

TomSmithLandandHomes.com

Information is believed to be accurate but not guaranteed.



2010-2021
AMERICA'S
BEST
BROKERAGES

Proud to be
C2EX
endorsed!

Call me today!

ELI FERGUSON, REALTOR®

Eli@TomSmithLand.com

601.990.5070 office | 601.757.7117 cell



Expect More. Get More.

TomSmithLandandHomes.com

Information is believed to be accurate but not guaranteed.



2010-2021
AMERICA'S
BEST
BROKERAGES

Proud to be
C2EX
endorsed!

Call me today!

ELI FERGUSON, REALTOR®

Eli@TomSmithLand.com

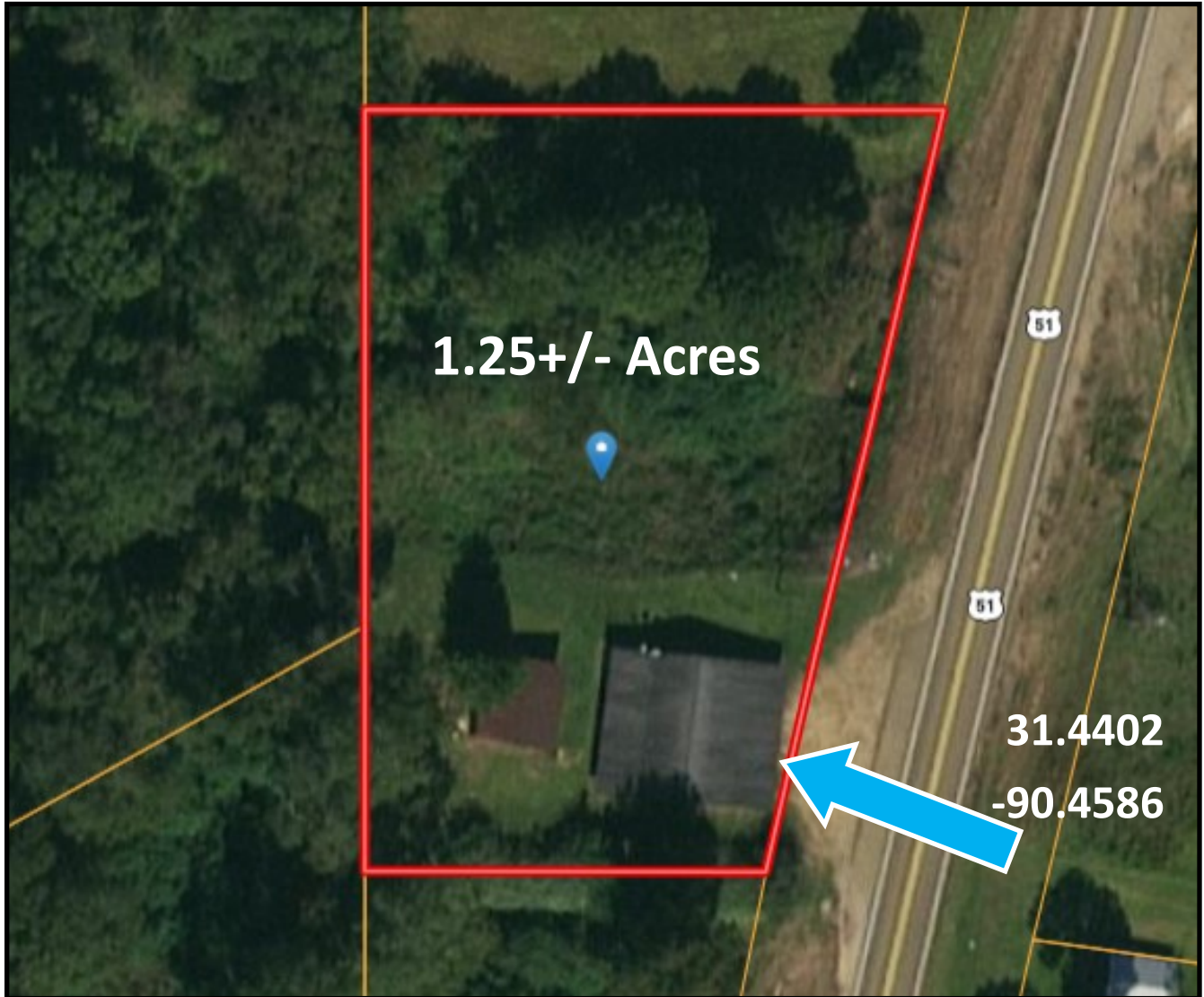
601.990.5070 office | 601.757.7117 cell



TomSmithLandandHomes.com

Information is believed to be accurate but not guaranteed.

AERIAL MAP



LandReport
2010-2021
AMERICA'S
BEST
BROKERAGES

Proud to be
C2EX
endorsed!

Call me today!

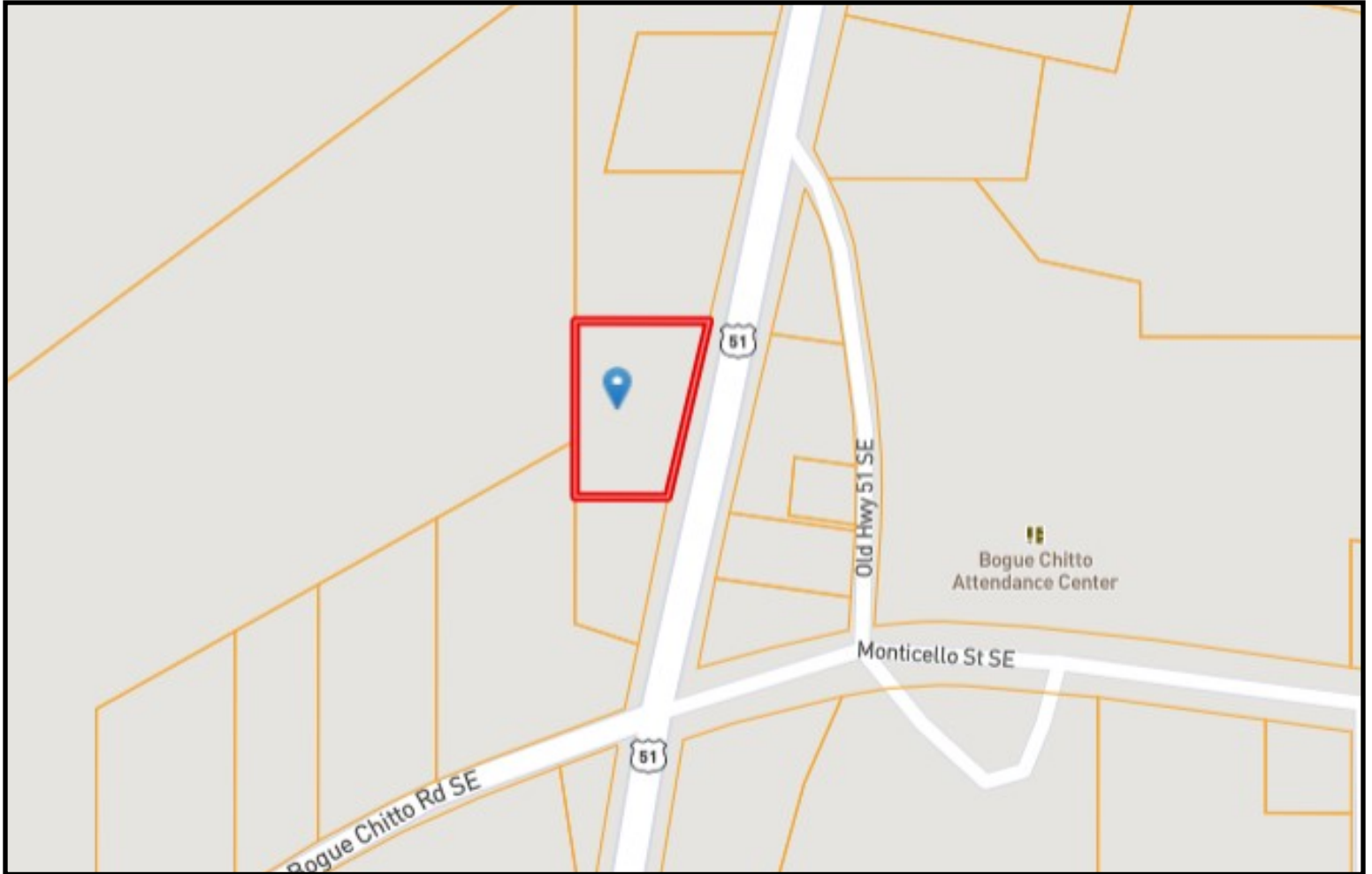
ELI FERGUSON, REALTOR®
Eli@TomSmithLand.com
601.990.5070 office | 601.757.7117 cell



TomSmithLandandHomes.com

Information is believed to be accurate but not guaranteed.

OWNERSHIP MAP



Call me today!

ELI FERGUSON, REALTOR®

Eli@TomSmithLand.com

601.990.5070 office | 601.757.7117 cell

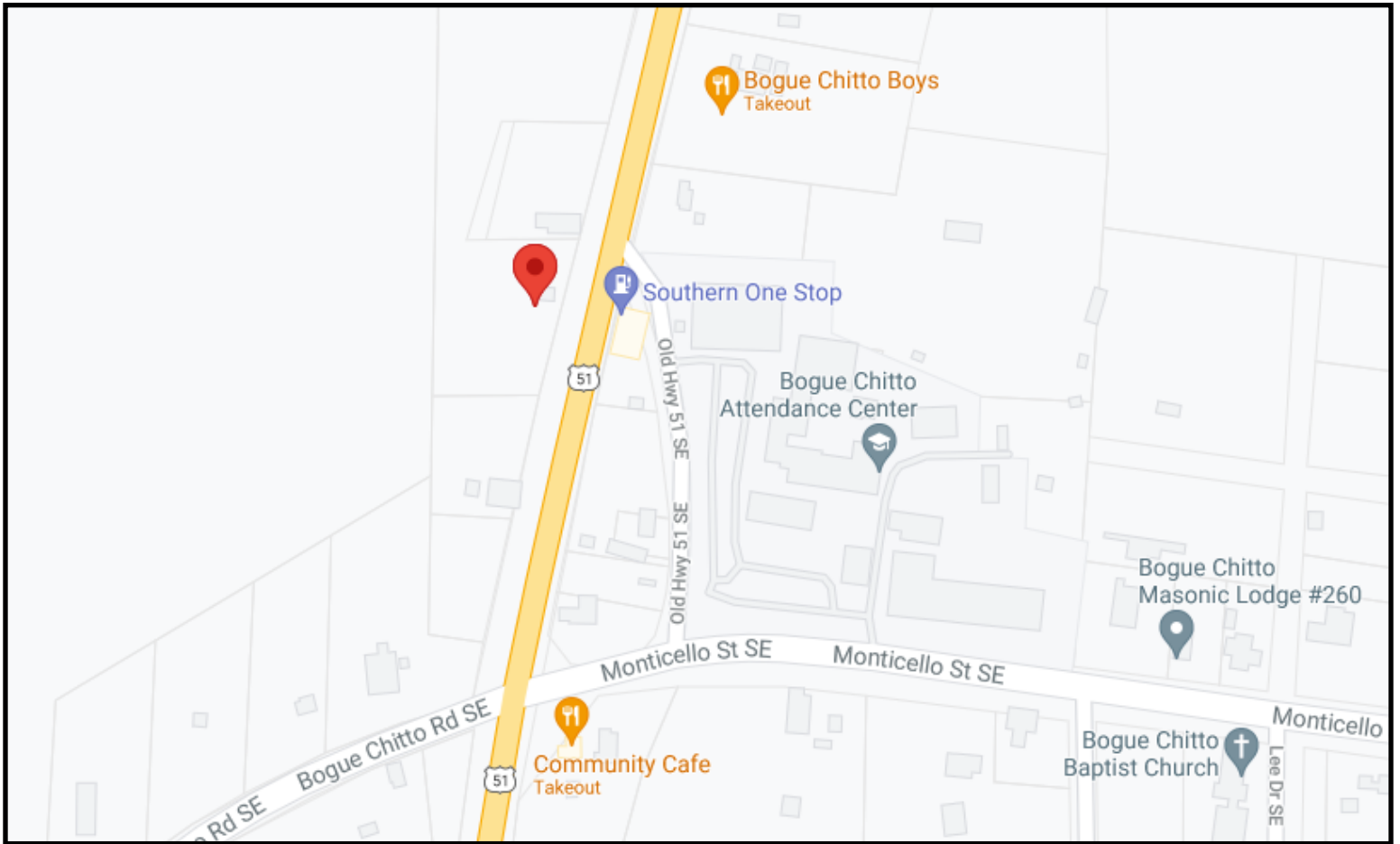


Expect More. Get More.

TomSmithLandandHomes.com

Information is believed to be accurate but not guaranteed.

DIRECTIONAL MAP



Directions From Bogue Chitto, MS: From the intersection of Hwy 51 and Bogue Chitto Road, travel North on Hwy 51 for .1 miles and the property will be on your left.



Call me today!

ELI FERGUSON, REALTOR®

Eli@TomSmithLand.com

601.990.5070 office | 601.757.7117 cell



TomSmithLandandHomes.com

Information is believed to be accurate but not guaranteed.