



Commercial Property in a Great Location Wilkinson County, MS



\$185,000

1500 HWY 61 Woodville, MS 39669

LOCATION! LOCATION! LOCATION!!! Open your business here in Wilkinson County, MS!
This 3,500 square foot, commercial building is situated on .8+/- acres on Hwy 61 in Woodville, just minutes from the heart of town. With four rooms, two bathrooms, and resort status, the opportunities are endless! This property also has tons of road frontage with ample parking! You could consider a restaurant, sports bar, farmers market, convenient store, salon, etc. Call Eli or Preston today to schedule a viewing!

Directions from the Intersection of MS-24 E and US-61 S in Woodville, MS: Turn right onto US-61S and travel 1.6 miles, the destination will be on the right.



PRESTON SMITH, MANAGING BROKER®
Preston@TomSmithLand.com
601.990.5070 office | 601.209.7150 cell



Call us today!



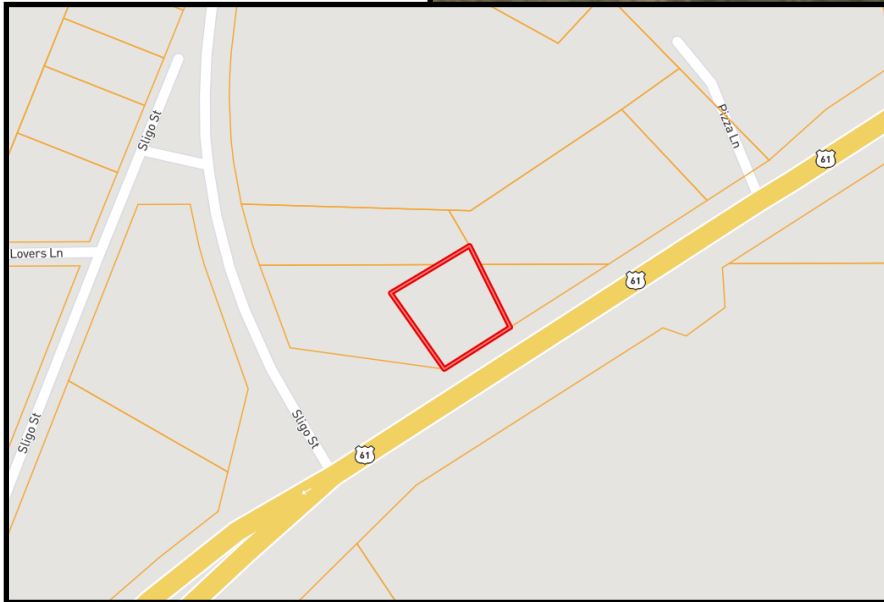
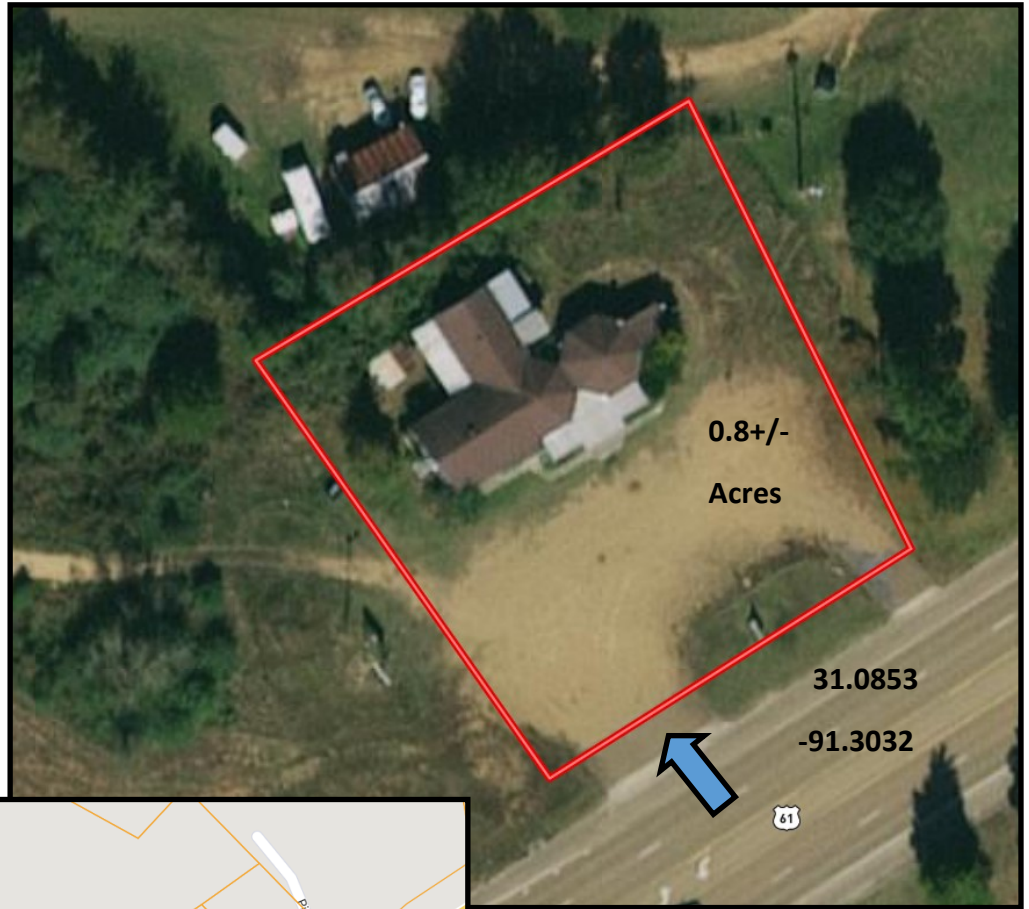
ELI FERGUSON, REALTOR®
Eli@TomSmithLand.com
601.990.5070 office | 601.757.7117 cell

TomSmithLandandHomes.com

Information is believed to be accurate but not guaranteed.



Aerial Map



Ownership Map



PRESTON SMITH, MANAGING BROKER®
Preston@TomSmithLand.com
601.990.5070 office | 601.209.7150 cell



Call us today!

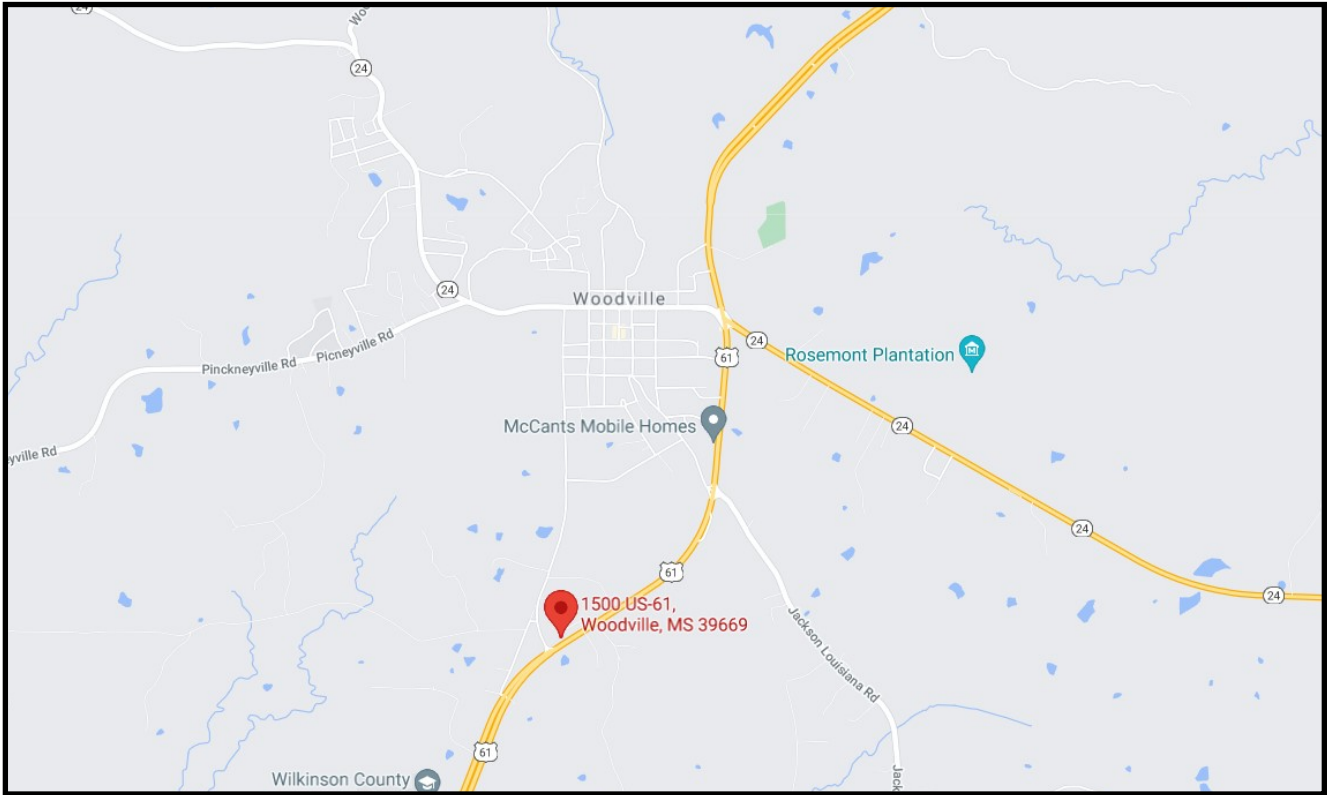


ELI FERGUSON, REALTOR®
Eli@TomSmithLand.com
601.990.5070 office | 601.757.7117 cell

TomSmithLandandHomes.com

Information is believed to be accurate but not guaranteed.





Directional Map

Address: 1500 HWY 61 Woodville, MS 39669

Directions from the Intersection of MS-24 E and US-61 S in Woodville, MS: Turn right onto US-61S and travel 1.6 miles, the destination will be on the right.



PRESTON SMITH, MANAGING BROKER®
 Preston@TomSmithLand.com
 601.990.5070 office | 601.209.7150 cell



Call us today!



ELI FERGUSON, REALTOR®
 Eli@TomSmithLand.com
 601.990.5070 office | 601.757.7117 cell

TomSmithLandandHomes.com

Information is believed to be accurate but not guaranteed.

