

70+/- Acres in Kemper County, MS

Recreational Hunting Tract and Timber Investment With a Camp



Are you interested in a small timber investment with loads of potential? Take a look at this 70+/- acre tract in Kemper County, MS! The gated property offers 1,550 feet of frontage on Sucarnoochee Road, a small creek runs into a beaver pond on the west side, and 3 food plots that are ready to go. A one bedroom, one and half bath, furnished camp with central heat and air is on site. Make this your weekend getaway or place to stay while you build your dream home. Call Brett to schedule a showing.

Directions from Meridian, MS: Travel MS Hwy 45N for 32 miles, turn left onto Townsend Road. The property will be on your right marked by a sign.



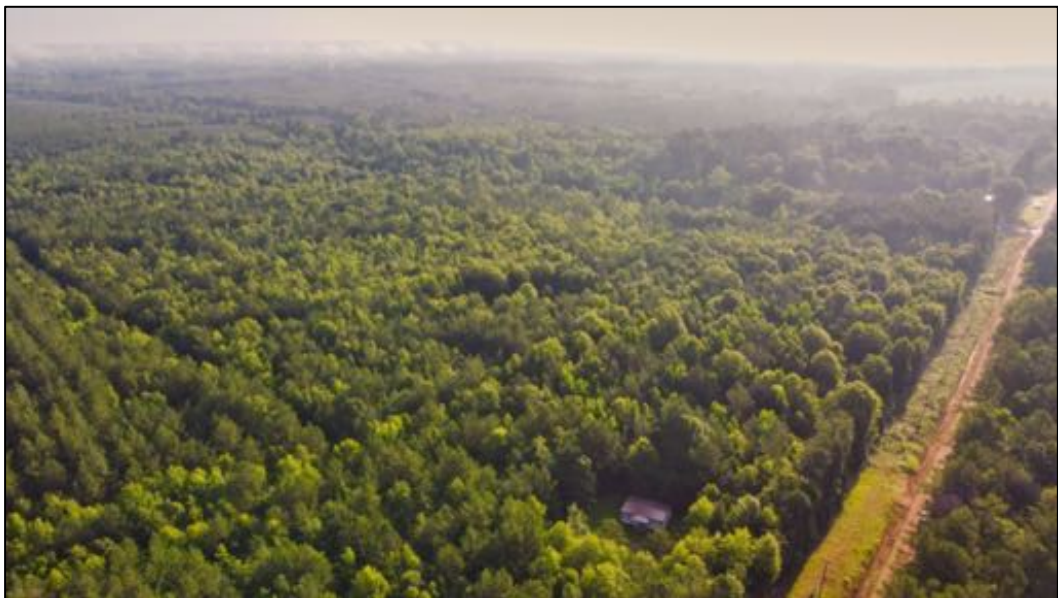
Call me today!

BRETT CARNEY, REALTOR®
Brett@TomSmithLand.com
662.268.6333 office | 601.710.9633 cell



TomSmithLandandHomes.com

Information is believed to be accurate but not guaranteed.



Call me today!

BRETT CARNEY, REALTOR®
Brett@TomSmithLand.com
662.268.6333 office | 601.710.9633 cell



TomSmithLandandHomes.com

Information is believed to be accurate but not guaranteed.



Call me today!

BRETT CARNEY, REALTOR®

Brett@TomSmithLand.com

662.268.6333 **office** | 601.710.9633 **cell**



TomSmithLandandHomes.com

Information is believed to be accurate but not guaranteed.



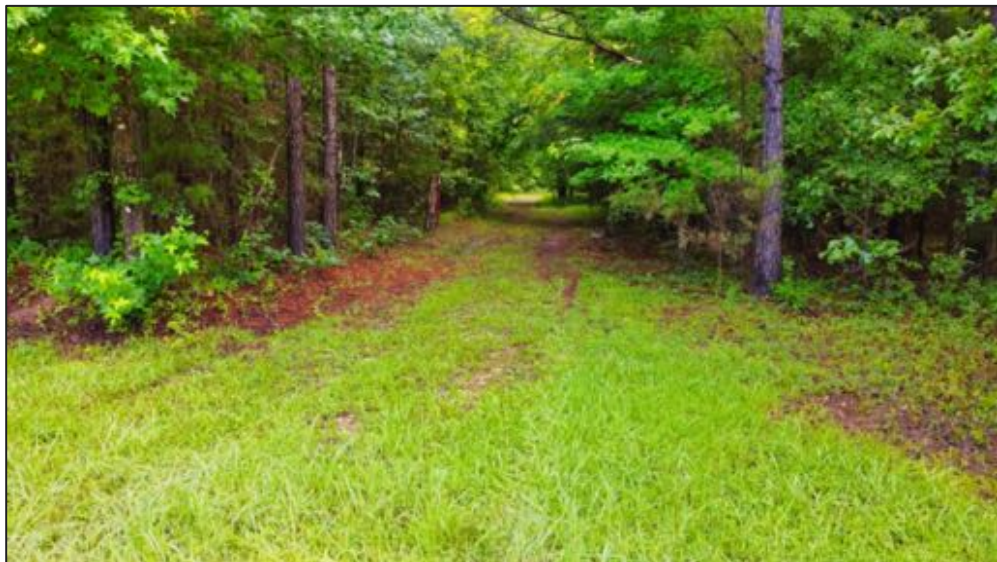
Call me today!

BRETT CARNEY, REALTOR®
Brett@TomSmithLand.com
662.268.6333 office | 601.710.9633 cell



TomSmithLandandHomes.com

information is believed to be accurate but not guaranteed.



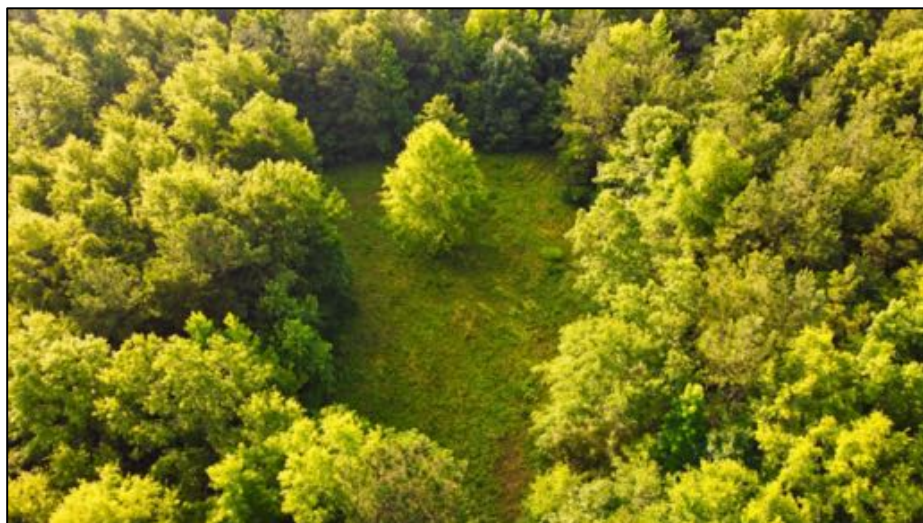
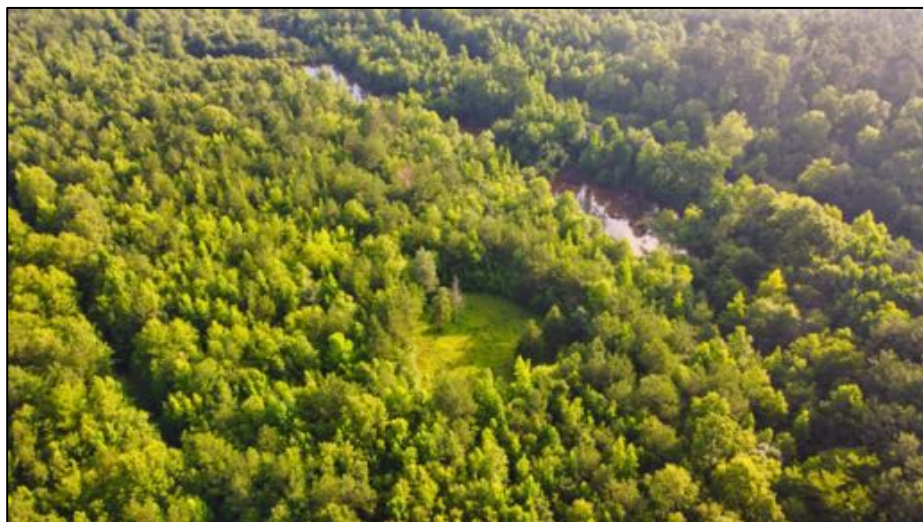
Call me today!

BRETT CARNEY, REALTOR®
 Brett@TomSmithLand.com
 662.268.6333 office | 601.710.9633 cell

**Tom
 Smith
 LAND AND
 HOMES**
 Expect More. Get More.

TomSmithLandandHomes.com

information is believed to be accurate but not guaranteed.



Call me today!

BRETT CARNEY, REALTOR®

Brett@TomSmithLand.com

662.268.6333 office | 601.710.9633 cell



Expect More. Get More.

TomSmithLandandHomes.com

Information is believed to be accurate but not guaranteed.

2011-2020
BEST
BROKERAGES

Aerial Photography



Call me today!

BRETT CARNEY, REALTOR®

Brett@TomSmithLand.com

662.268.6333 office | 601.710.9633 cell



TomSmithLandandHomes.com

Information is believed to be accurate but not guaranteed.

FEMA Flood Map



Call me today!

BRETT CARNEY, REALTOR®

Brett@TomSmithLand.com

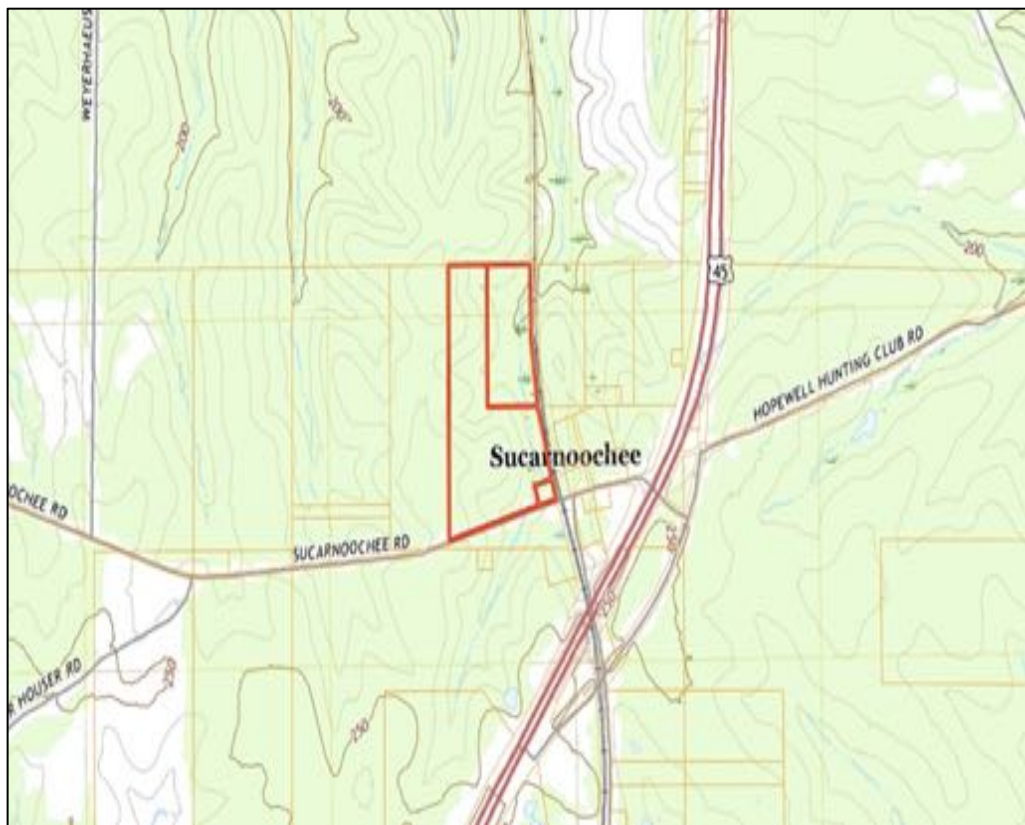
662.268.6333 office | 601.710.9633 cell



TomSmithLandandHomes.com

Information is believed to be accurate but not guaranteed.

Topographic Map



Call me today!

BRETT CARNEY, REALTOR®

Brett@TomSmithLand.com

662.268.6333 office | 601.710.9633 cell



TomSmithLandandHomes.com

Information is believed to be accurate but not guaranteed.

Ownership Map



Call me today!

BRETT CARNEY, REALTOR®
Brett@TomSmithLand.com
662.268.6333 office | 601.710.9633 cell



TomSmithLandandHomes.com

Information is believed to be accurate but not guaranteed.

Directional Map



Directions from Meridian, MS: Travel MS Hwy 45N for 32 miles, turn left onto Townsend Road. The property will be on your right marked by a sign.



Call me today!

BRETT CARNEY, REALTOR®
Brett@TomSmithLand.com
662.268.6333 **office** | 601.710.9633 **cell**



TomSmithLandandHomes.com

Information is believed to be accurate but not guaranteed.