



5+/- Acre Recreational Tract Lincoln County, MS



\$42,500

Are you in the market for a small, secluded, recreational property in Lincoln County, MS? Come take a look at this 5+/- acre tract of mixed hardwoods and pines. If a private homesite is what you've got your sights set on, this property is fairly level and suitable for that as well. The peaceful property has over 1,700 feet of road frontage on Gum Grove Road in the West Lincoln School District, and is located less than 15 miles from Brookhaven and I-55 and an hour and a half from Baton Rouge. This quiet tract gives the country feel as there are no other homes for miles. Additional acreage is available. Call Sabrina or Konner today to schedule a viewing!

Directions from Hwy 84 West in Brookhaven, MS: Turn left onto Auburn Drive. Travel approximately 3 miles and turn right onto Gum Grove Road. Travel 0.6 miles and the property is on the right.



KONNER BURKE, REALTOR®
Konner@TomSmithLand.com
601.990.5070 office | 601.757.4447 cell



Expect More. Get More.

Call us today!



SABRINA WOLFE, ASSOCIATE BROKER®
Sabrina@TomSmithHomes.com
601.990.5070 office | 601.754.3763 cell

TomSmithLandandHomes.com

Information is believed to be accurate but not guaranteed.





KONNER BURKE, REALTOR®
Konner@TomSmithLand.com
601.990.5070 office | 601.757.4447 cell



Expect More. Get More.

Call us today!



SABRINA WOLFE, ASSOCIATE BROKER®
Sabrina@TomSmithHomes.com
601.990.5070 office | 601.754.3763 cell

TomSmithLandandHomes.com

Information is believed to be accurate but not guaranteed.



Aerial Map



KONNER BURKE, REALTOR®
Konner@TomSmithLand.com
601.990.5070 office | 601.757.4447 cell



Call us today!



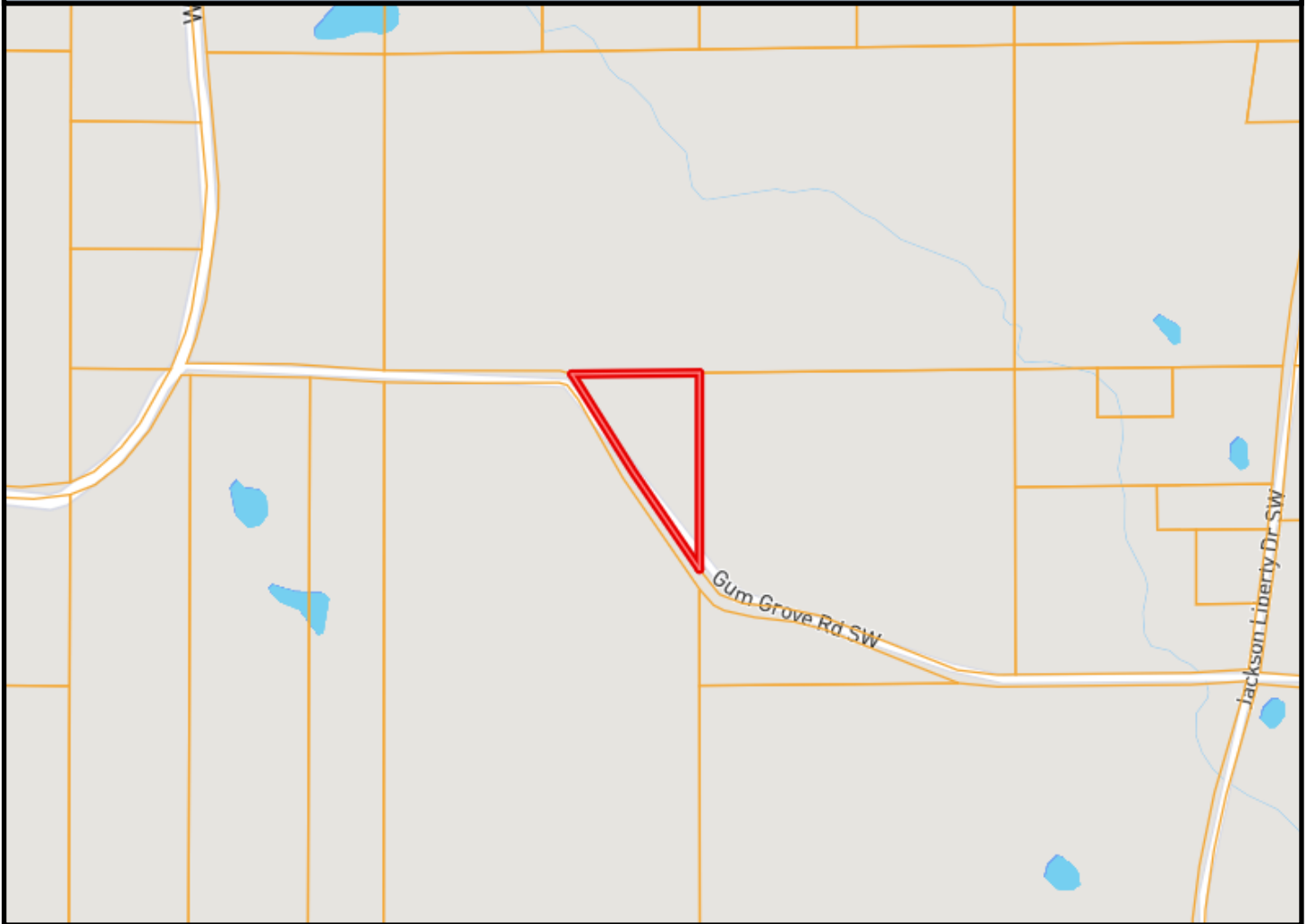
SABRINA WOLFE, ASSOCIATE BROKER®
Sabrina@TomSmithHomes.com
601.990.5070 office | 601.754.3763 cell

TomSmithLandandHomes.com

Information is believed to be accurate but not guaranteed.



Ownership Map



KONNER BURKE, REALTOR®
Konner@TomSmithLand.com
601.990.5070 office | 601.757.4447 cell



Expect More. Get More.

Call us today!

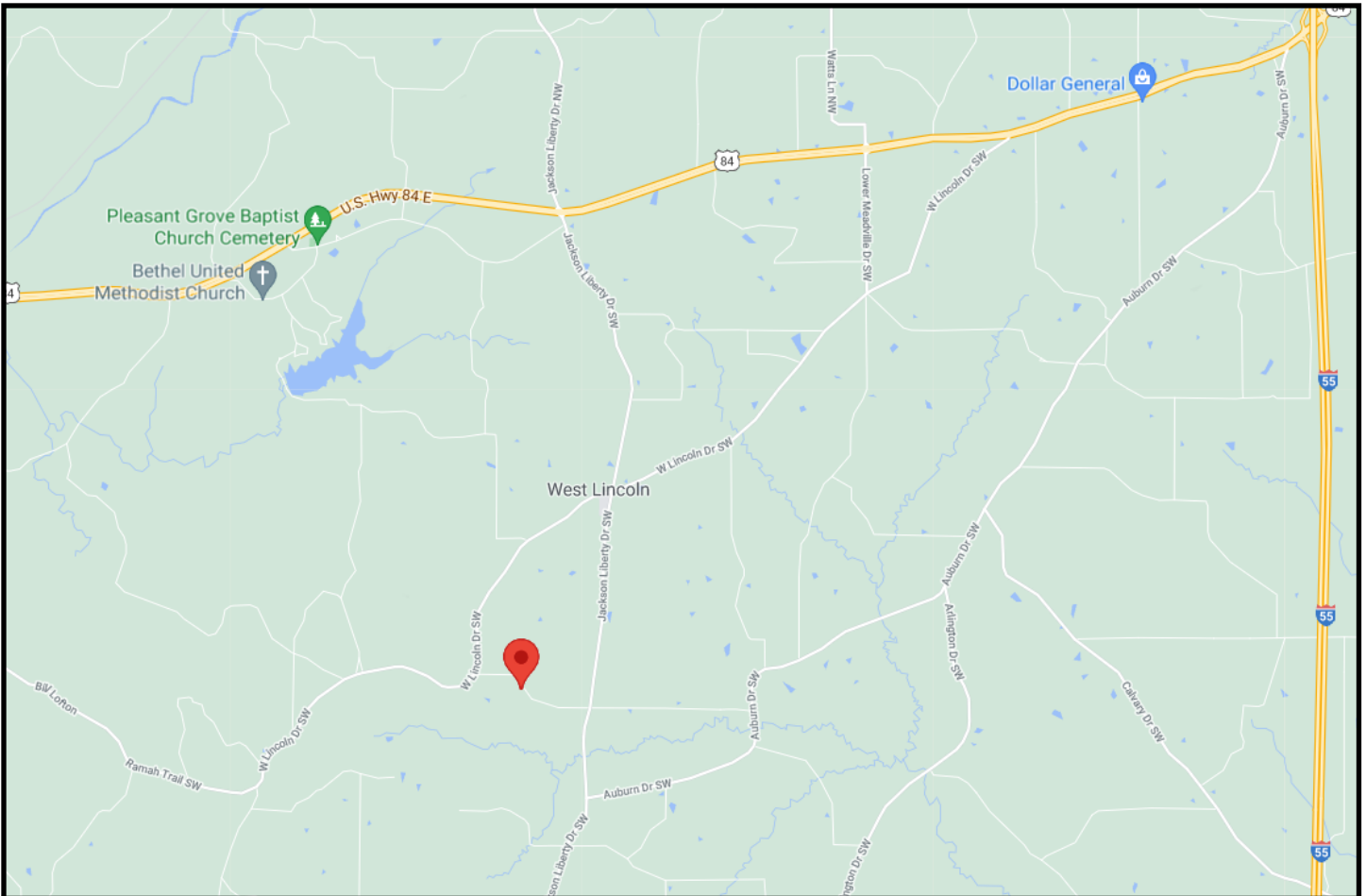


SABRINA WOLFE, ASSOCIATE BROKER®
Sabrina@TomSmithHomes.com
601.990.5070 office | 601.754.3763 cell

TomSmithLandandHomes.com

Information is believed to be accurate but not guaranteed.





Directional Map



Directions from Hwy 84 West in Brookhaven, MS: Turn left onto Auburn Drive. Travel approximately 3 miles and turn right onto Gum Grove Road. Travel 0.6 miles and the property is on the right.



KONNER BURKE, REALTOR®
 Konner@TomSmithLand.com
 601.990.5070 office | 601.757.4447 cell



Call us today!



SABRINA WOLFE, ASSOCIATE BROKER®
 Sabrina@TomSmithHomes.com
 601.990.5070 office | 601.754.3763 cell

