

Cute Rambler in Cleveland Bolivar County, MS



913 Seventh Ave. Cleveland, MS

\$115,000

Looking for a home in Cleveland, MS? Take a look at this 1,328+/- square foot, Bolivar County home featuring three bedrooms, two bathrooms, two dens, beautiful hardwood floors, and a large fenced in backyard. The home is right beside a park and conveniently located to everything Cleveland has to offer! This won't last long, contact Tracey to schedule a private showing!

Directions from the Corner of HWY 61 and HWY 8 in Cleveland, MS 38732: Travel west on E Sunflower Rd toward N Chrisman Ave for approximately 1 mile. Turn left onto N. 5th Ave and then turn right onto University St. In 0.2 miles turn left at the second cross street onto Seventh Ave, the destination is on the left.



Call me today!

TRACEY BELL, MANAGING BROKER

Tracey@TomSmithLand.com

662.441.2500 office | 662.719.4720 cell



Expect More. Get More.

TomSmithLandandHomes.com

Information is believed to be accurate but not guaranteed.





TRACEY BELL, MANAGING BROKER
Tracey@TomSmithLand.com
662.441.2500 office | 662.719.4720 cell



TomSmithLandandHomes.com

Information is believed to be accurate but not guaranteed.



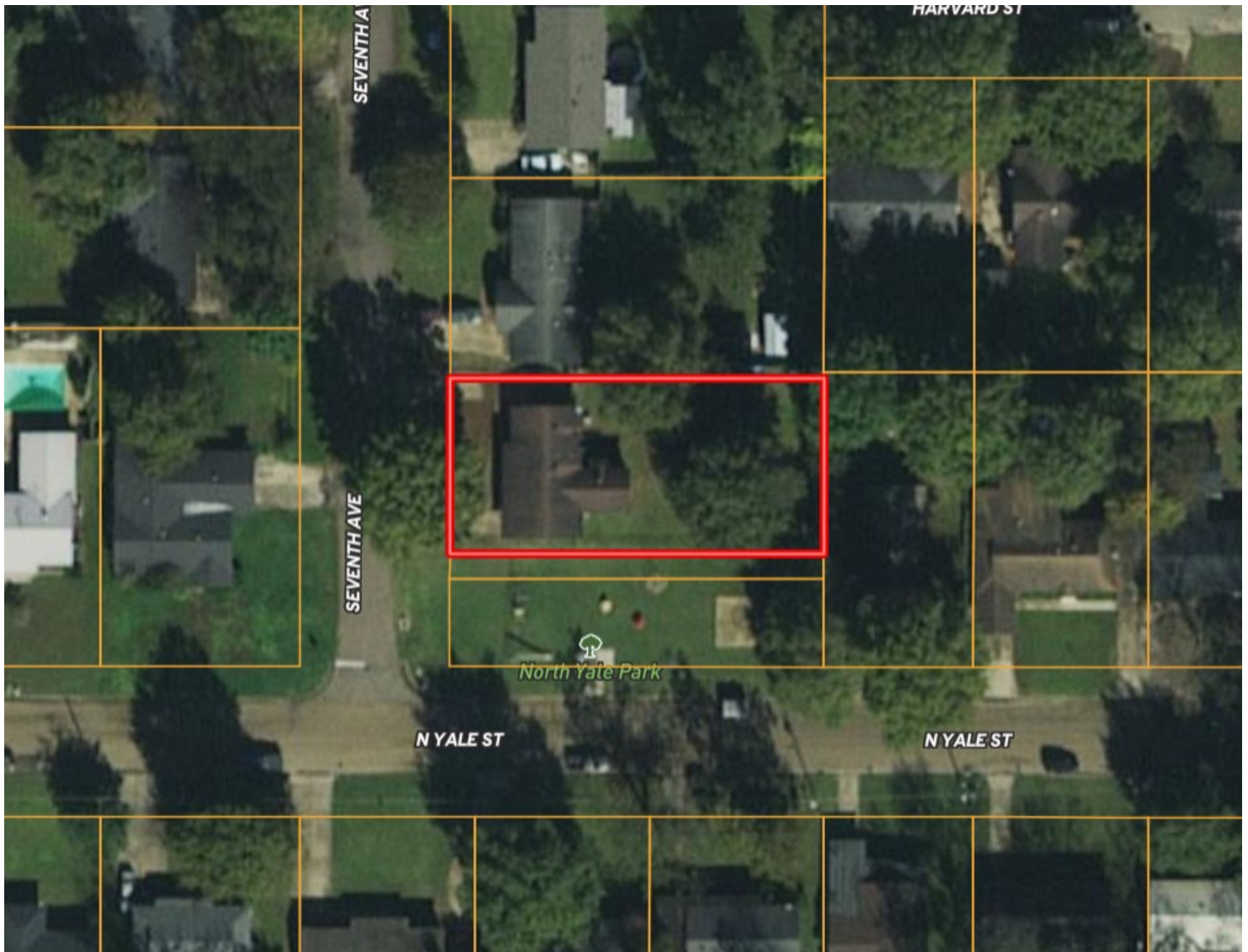
TRACEY BELL, MANAGING BROKER
Tracey@TomSmithLand.com
662.441.2500 office | 662.719.4720 cell



TomSmithLandandHomes.com

Information is believed to be accurate but not guaranteed.

AERIAL MAP



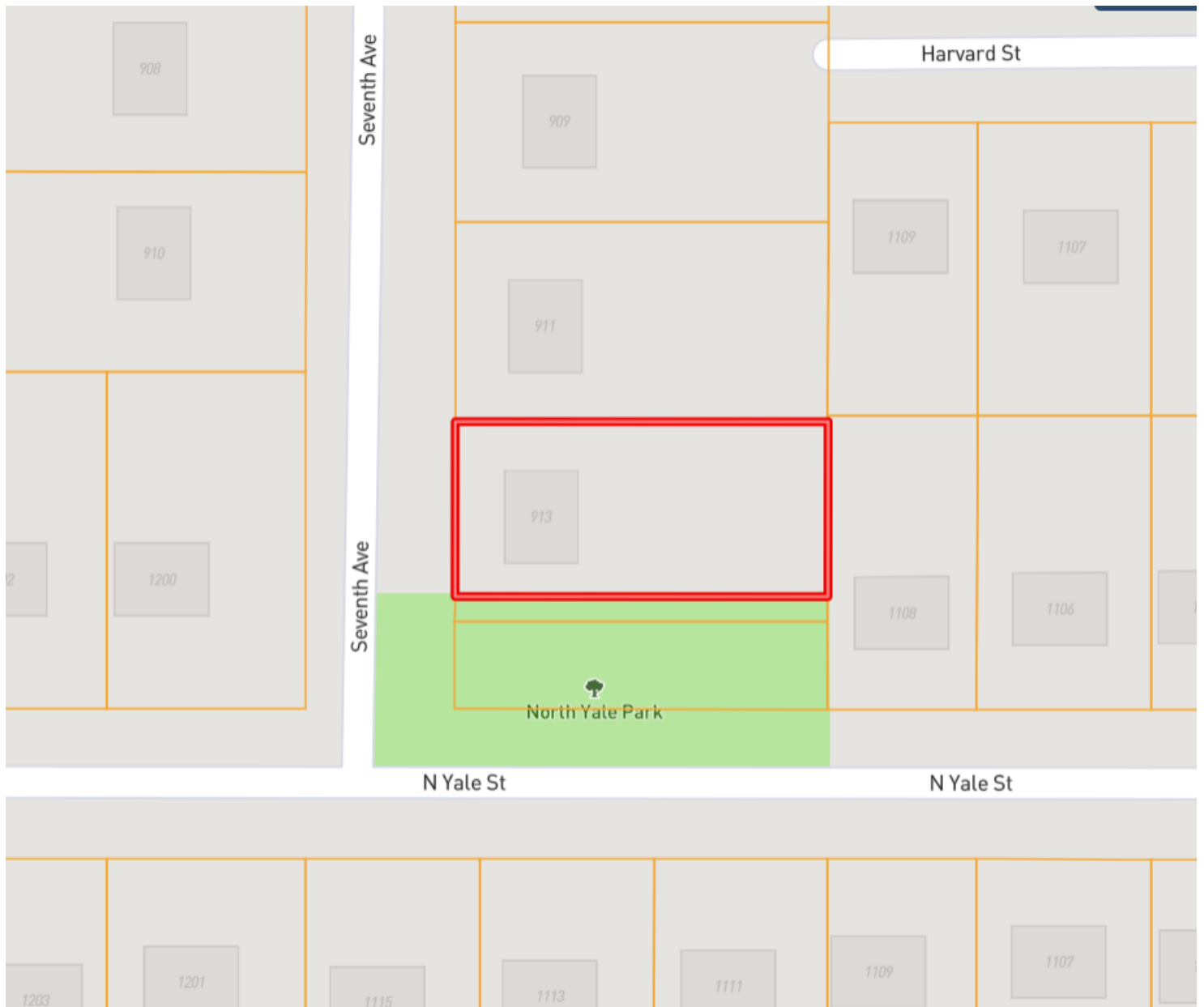
TRACEY BELL, MANAGING BROKER
Tracey@TomSmithLand.com
662.441.2500 office | 662.719.4720 cell



TomSmithLandandHomes.com

Information is believed to be accurate but not guaranteed.

OWNERSHIP MAP



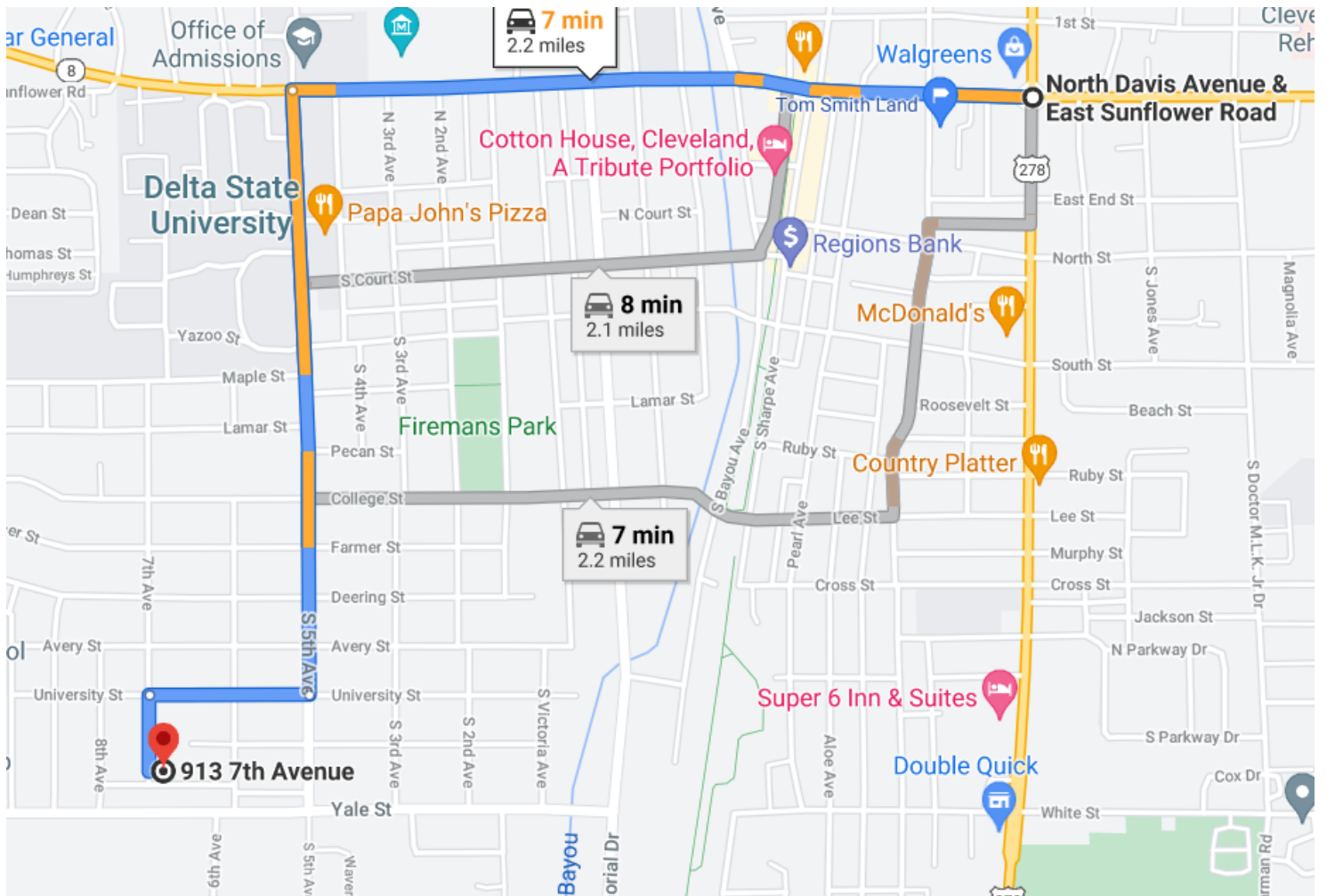
TRACEY BELL, MANAGING BROKER
Tracey@TomSmithLand.com
662.441.2500 office | 662.719.4720 cell



TomSmithLandandHomes.com

Information is believed to be accurate but not guaranteed.

DIRECTIONAL MAP



Address: 913 Seventh Avenue

Directions from the corner of HWY 61 and HWY 8 in Cleveland, MS 38732: Travel west on E Sunflower Rd toward N Chrisman Ave for approximately 1 mile, turn left onto N. 5th Ave, turn right onto University St and in 0.2 miles turn left at the second cross street onto Seventh Ave, the destination is on the left.



Call me today!

TRACEY BELL, MANAGING BROKER

Tracey@TomSmithLand.com

662.441.2500 **office** | 662.719.4720 **cell**



Expect More. Get More.

TomSmithLandandHomes.com

Information is believed to be accurate but not guaranteed.