

# 2.33 Acres +/- Home Site or Development Union County, MS



**\$59,900**

Take a look at this beautiful, partially wooded lot located on Moss Hill Drive near downtown New Albany. The property contains 2.33 acres +/- with approximately 374.49 feet of frontage on Moss Hill Drive in the A-Rated New Albany City School District. The view looking north from the south side would be great for your dream home. Zoning is R-2, One and Two Family Residential making this a perfect property for developers to divide. All city utilities are available. Owner is a licensed MS real estate broker. Call Tom today!

**Directions:** From the intersection of Hwy 30/Bankhead Street in New Albany, turn left and drive 0.25 miles to Denton Road. Turn right and drive 0.25 miles to Moss Hill Drive. Turn right and drive 0.5 miles to property on the left at Robbins Road.



*call me today!*

**TOM WISEMAN**, MANAGING BROKER  
TWiseman@TomSmithLand.com  
662.317.0467



**TomSmithLandandHomes.com**

Information is believed to be accurate but not guaranteed.



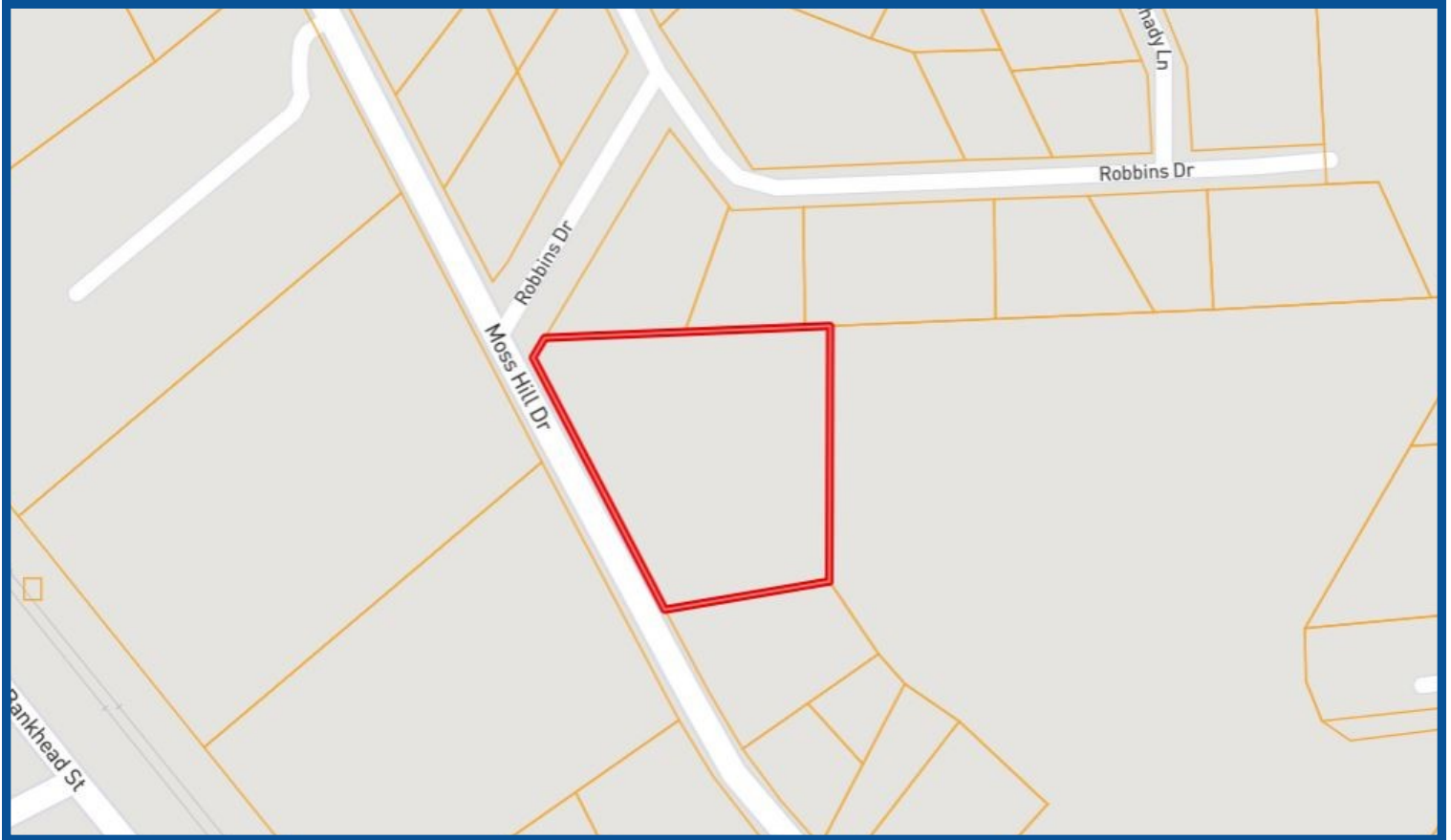
**TOM WISEMAN**, MANAGING BROKER  
TWiseman@TomSmithLand.com  
662.317.0467



**TomSmithLandandHomes.com**

Information is believed to be accurate but not guaranteed.

# PROPERTY MAP



**TOM WISEMAN**, MANAGING BROKER  
TWiseman@TomSmithLand.com  
662.317.0467



**TomSmithLandandHomes.com**

Information is believed to be accurate but not guaranteed.

# AERIAL MAP



**TOM WISEMAN**, MANAGING BROKER  
TWiseman@TomSmithLand.com  
662.317.0467



Expect More. Get More.

[TomSmithLandandHomes.com](http://TomSmithLandandHomes.com)

Information is believed to be accurate but not guaranteed.

# TOPO MAP



**TOM WISEMAN**, MANAGING BROKER  
TWiseman@TomSmithLand.com  
662.317.0467



Expect More. Get More.

[TomSmithLandandHomes.com](http://TomSmithLandandHomes.com)

Information is believed to be accurate but not guaranteed.

# FLOOD MAP



**TOM WISEMAN**, MANAGING BROKER  
TWiseman@TomSmithLand.com  
662.317.0467

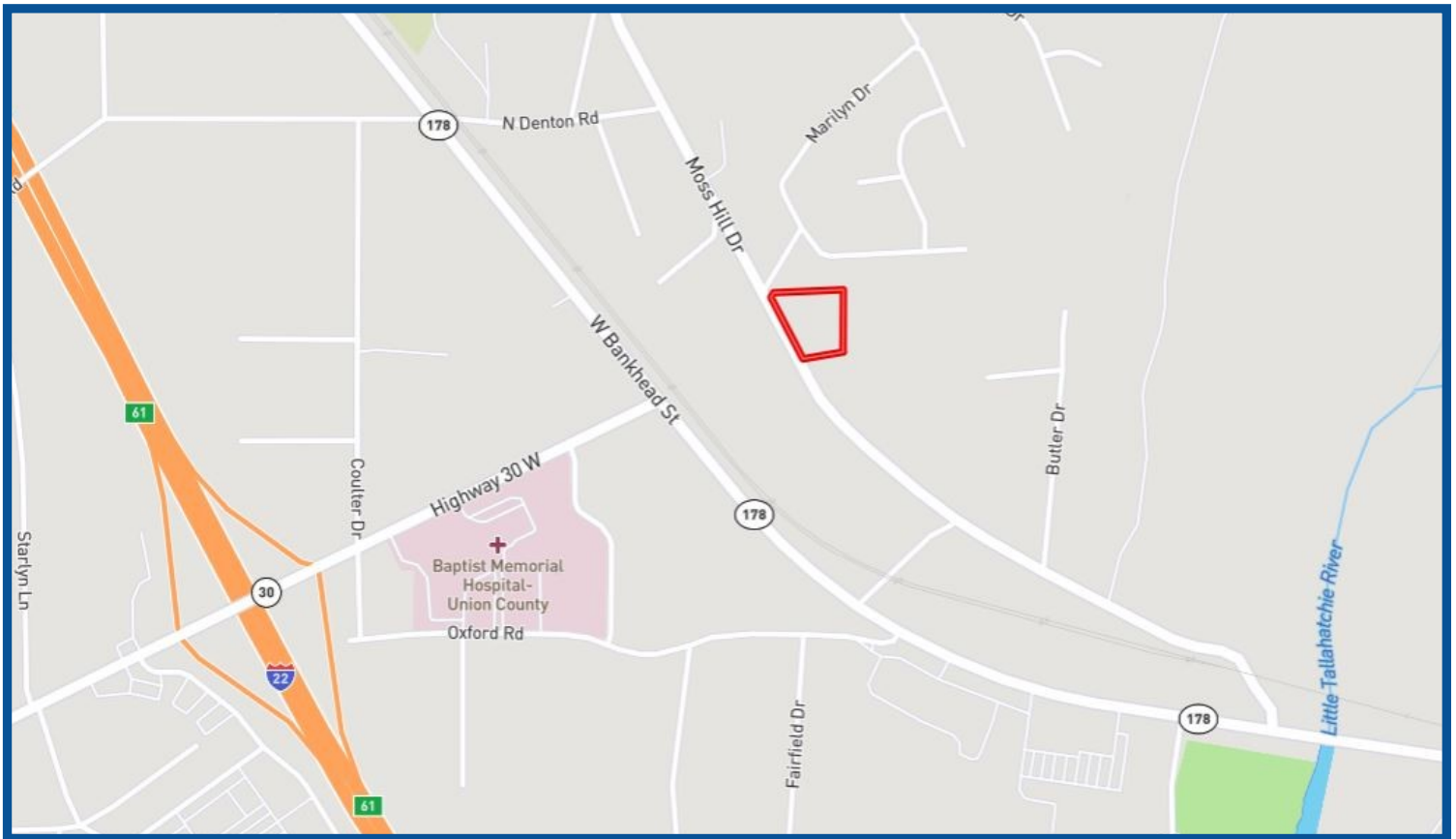


Expect More. Get More.

[TomSmithLandandHomes.com](http://TomSmithLandandHomes.com)

Information is believed to be accurate but not guaranteed.

# DIRECTIONAL MAP



**Directions:** From the intersection of Hwy 30/Bankhead Street, turn left and drive 0.25 miles to Denton Road. Turn right and drive 0.25 miles to Moss Hill Drive. Turn right and drive 0.5 miles to property on the left at Robbins Road.



**TOM WISEMAN**, MANAGING BROKER  
TWiseman@TomSmithLand.com  
662.317.0467



[TomSmithLandandHomes.com](http://TomSmithLandandHomes.com)

Information is believed to be accurate but not guaranteed.