

Development Tract 27.83+/- Acres in Union County, MS



Take a look at this 27.83 acre +/- tract located on the south side of Hwy 9 approximately ¼ mile from I-22 and Toyota Motor Manufacturing. The property has +/- 1,100 feet of frontage on Hwy 9 and there is no zoning. Utilities include community water and electric. The frontage and location make it perfect for any commercial or residential development. The owner will consider dividing. Don't miss this opportunity! Call Tom Today!

Directions: From the Interstate 22 Blue Springs exit, take Hwy 9 north ¼ mile to the property on the right.



Call me today!

TOM WISEMAN, ASSOCIATE BROKER
Twiseman@TomSmithLand.com
662.268.6333 **office** | 662.317.0467 **cell**



TomSmithLandandHomes.com

Information is believed to be accurate but not guaranteed.



TOM WISEMAN, ASSOCIATE BROKER
Twiseman@TomSmithLand.com
662.268.6333 **office** | 662.317.0467 **cell**

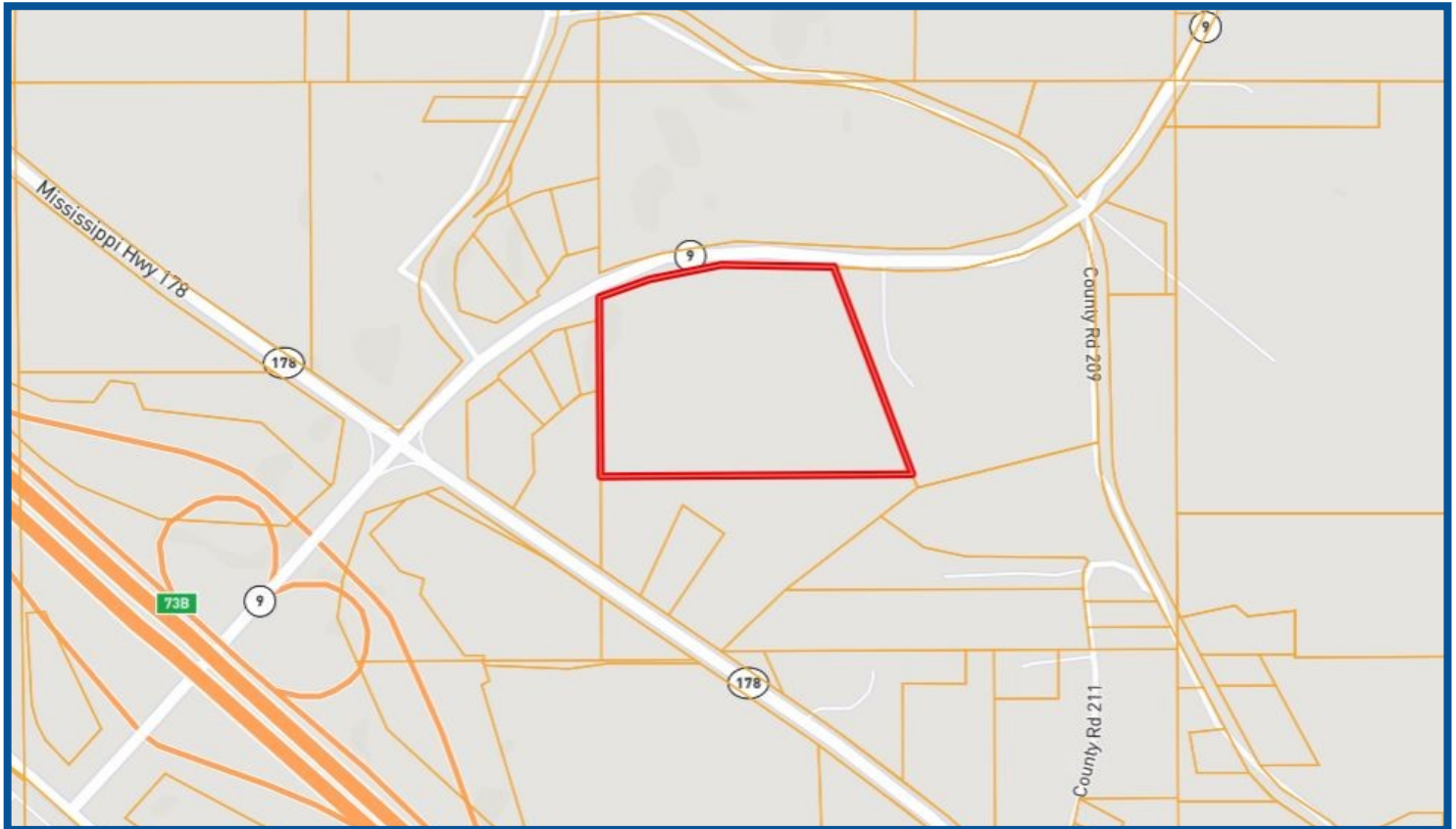


Expect More. Get More.

TomSmithLandandHomes.com

Information is believed to be accurate but not guaranteed.

PROPERTY MAP



Call me today!

TOM WISEMAN, ASSOCIATE BROKER
Twiseman@TomSmithLand.com
662.268.6333 **office** | 662.317.0467 **cell**



Expect More. Get More.

TomSmithLandandHomes.com

Information is believed to be accurate but not guaranteed.

AERIAL MAP



Call me today!

TOM WISEMAN, ASSOCIATE BROKER
Twiseman@TomSmithLand.com
662.268.6333 **office** | 662.317.0467 **cell**

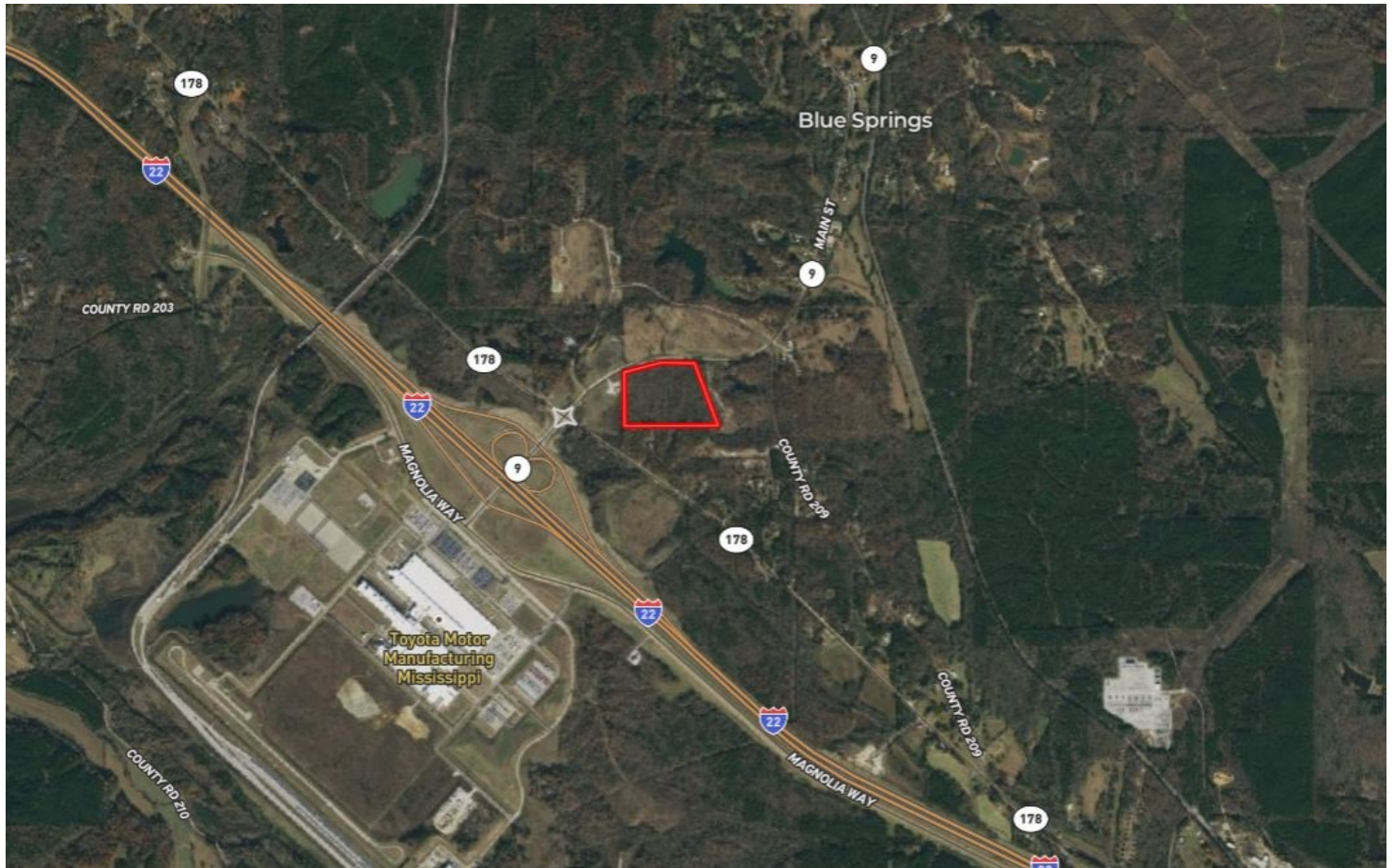


Expect More. Get More.

TomSmithLandandHomes.com

Information is believed to be accurate but not guaranteed.

AERIAL MAP



Call me today!

TOM WISEMAN, ASSOCIATE BROKER
Twiseman@TomSmithLand.com
662.268.6333 **office** | 662.317.0467 **cell**

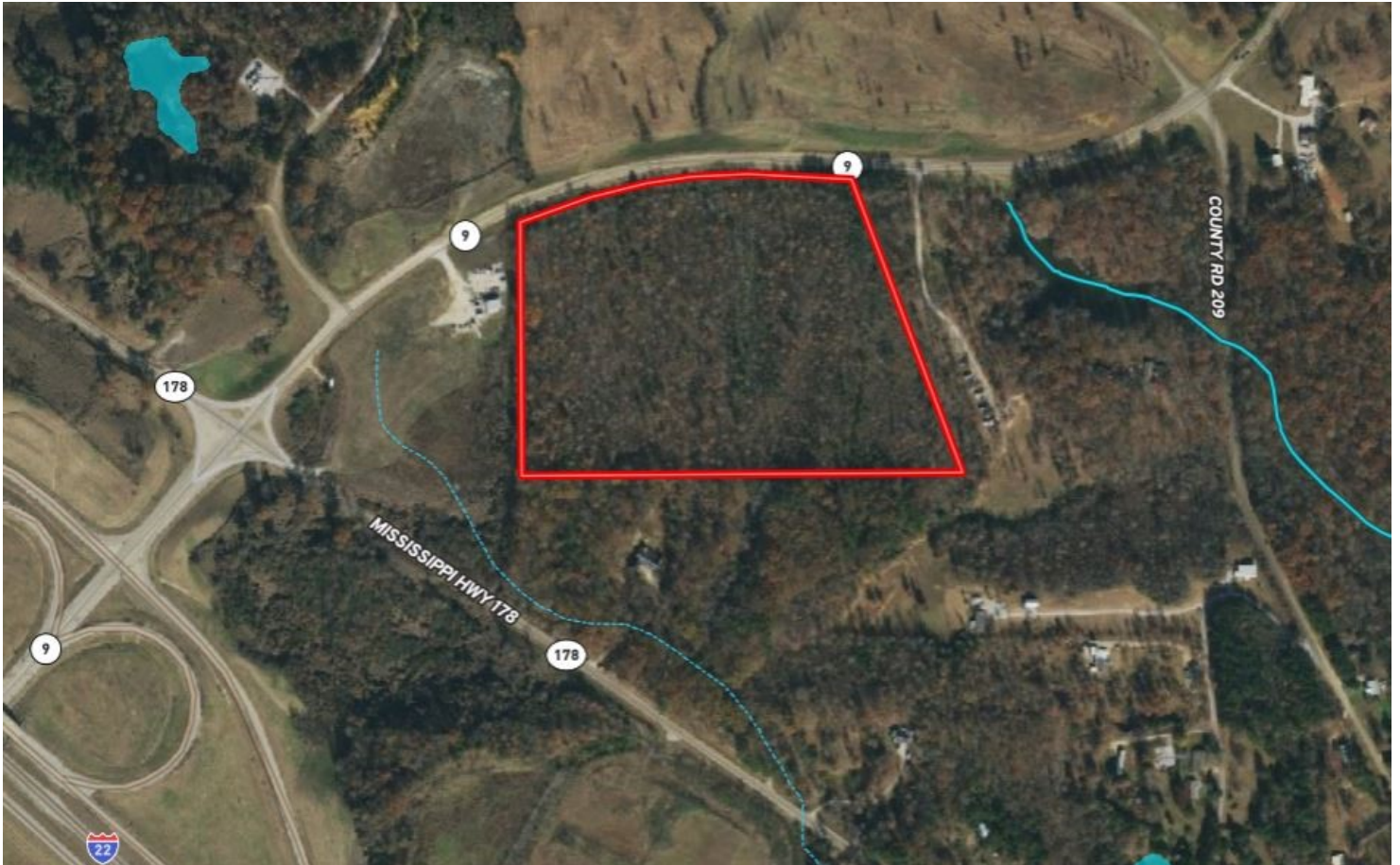


Expect More. Get More.

TomSmithLandandHomes.com

Information is believed to be accurate but not guaranteed.

FLOOD MAP



Call me today!

TOM WISEMAN, ASSOCIATE BROKER
Twiseman@TomSmithLand.com
662.268.6333 office | 662.317.0467 cell

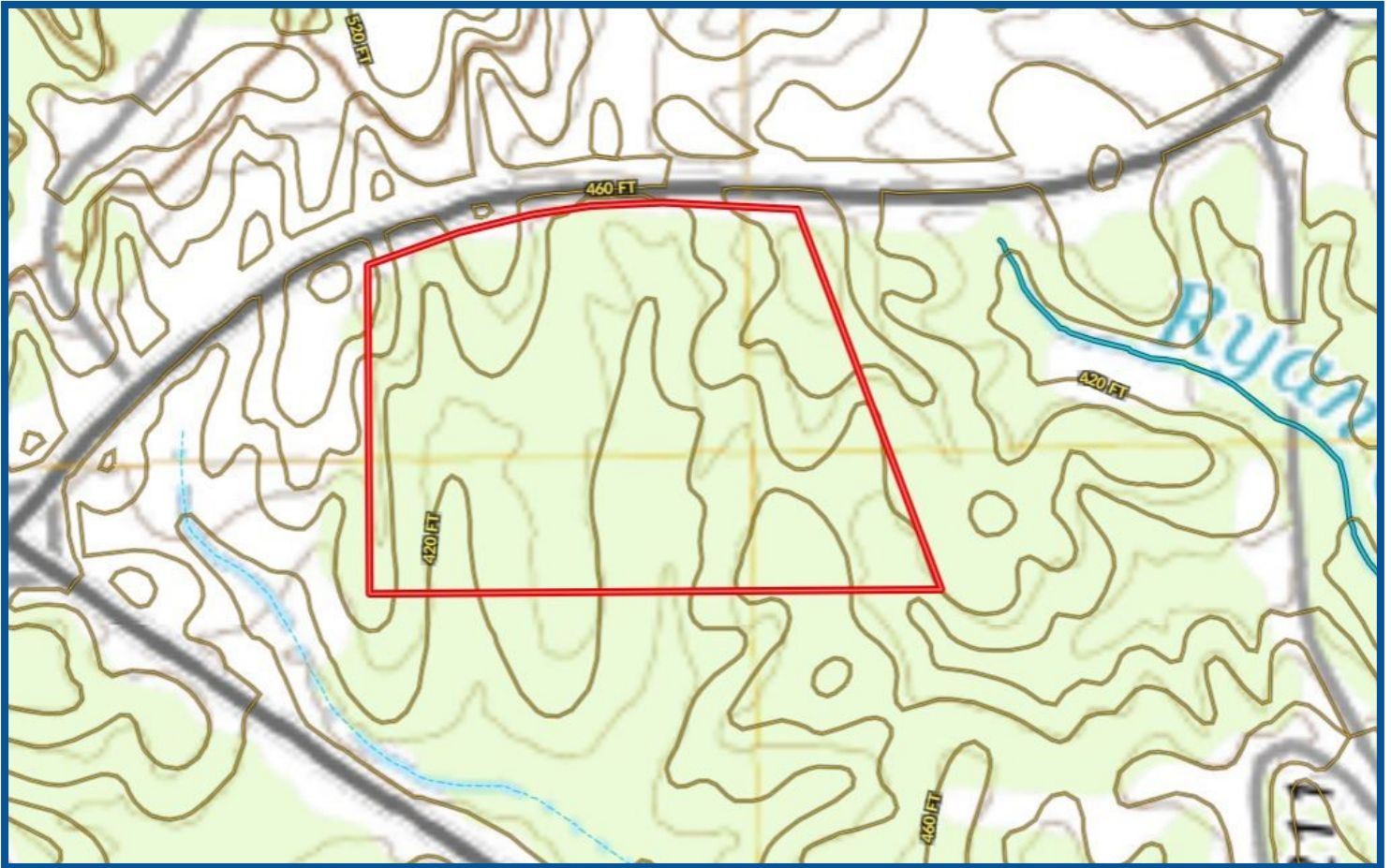


Expect More. Get More.

TomSmithLandandHomes.com

Information is believed to be accurate but not guaranteed.

TOPO MAP



Call me today!

TOM WISEMAN, ASSOCIATE BROKER
Twiseman@TomSmithLand.com
662.268.6333 **office** | 662.317.0467 **cell**



Expect More. Get More.

TomSmithLandandHomes.com

Information is believed to be accurate but not guaranteed.

DIRECTIONAL MAP



Directions: From the Interstate 22 Blue Springs exit, take Hwy 9 north ¼ mile to the property on the right.

Call me today!

TOM WISEMAN, ASSOCIATE BROKER
Twiseman@TomSmithLand.com
662.268.6333 **office** | 662.317.0467 **cell**



Expect More. Get More.

TomSmithLandandHomes.com

Information is believed to be accurate but not guaranteed.