

204 +/- Acre Recreational Tract in Lawrence County, MS



\$512,500

If you are looking for your very own hardwood bottom, then look no further than this 204 +/- acre tract located in Lawrence County, MS. This fabulous recreational tract features majestic white oak and other mast producing hardwoods interspersed with towering mature pine timber. Wiley Branch and Shop Branch join on the property, while Bahala Creek borders the property on the north. The year-round creeks offer the outdoorsman plenty of pinch points and crossings for whitetail deer as well as an abundance of food for both deer and turkey. An internal road offers access to the property and two food plots have been cleared and are ready to be cut and planted. Typical of a large hardwood bottom, the terrain is mostly flat with the branches winding through the property on their way to the Creek. Deer and turkey sign is abundant and there are plenty of squirrels in the hardwoods. Call Clif Cannon to schedule a showing!



2011-2020
BEST
BROKERAGES

call me today!

CLIF CANNON, REALTOR®
Clif@TomSmithLand.com
601.990.5070 office | 601.565.1070 cell



TomSmithLandandHomes.com

Information is believed to be accurate but not guaranteed.



CLIF CANNON, REALTOR®
Clif@TomSmithLand.com
601.990.5070 office | 601.565.1070 cell



Expect More. Get More.

TomSmithLandandHomes.com

Information is believed to be accurate but not guaranteed.



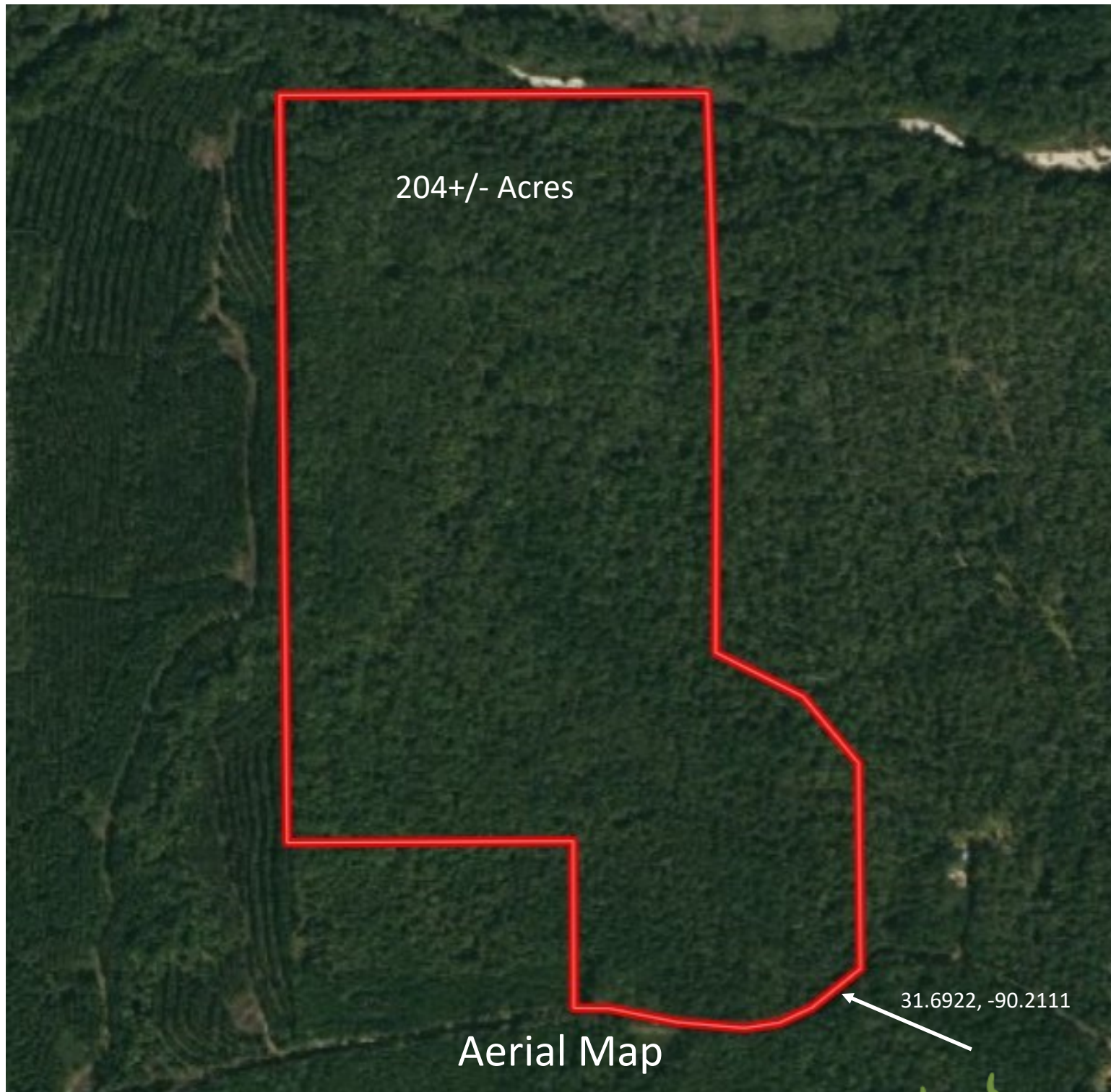
CLIF CANNON, REALTOR®
Clif@TomSmithLand.com
601.990.5070 office | 601.565.1070 cell



Expect More. Get More.

TomSmithLandandHomes.com

Information is believed to be accurate but not guaranteed.



CLIF CANNON, REALTOR®
Clif@TomSmithLand.com
601.990.5070 **office** | 601.565.1070 **cell**



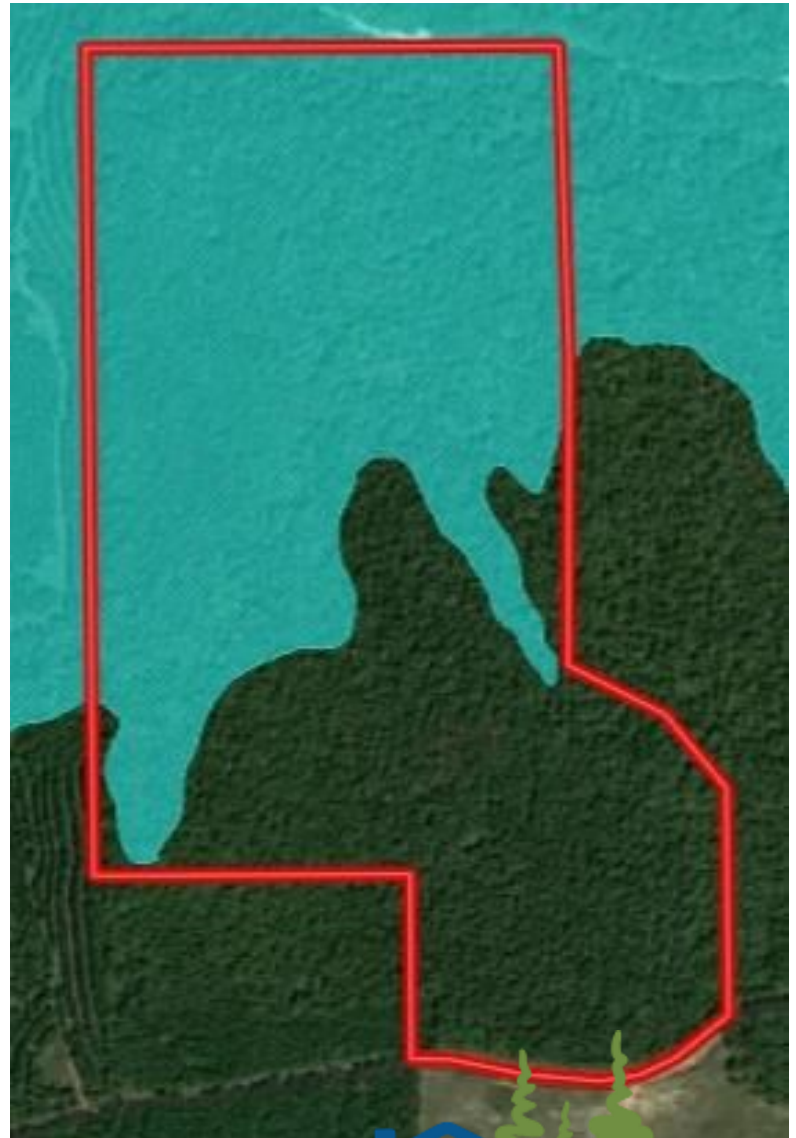
TomSmithLandandHomes.com

Information is believed to be accurate but not guaranteed.



Topographic Map

Flood Map

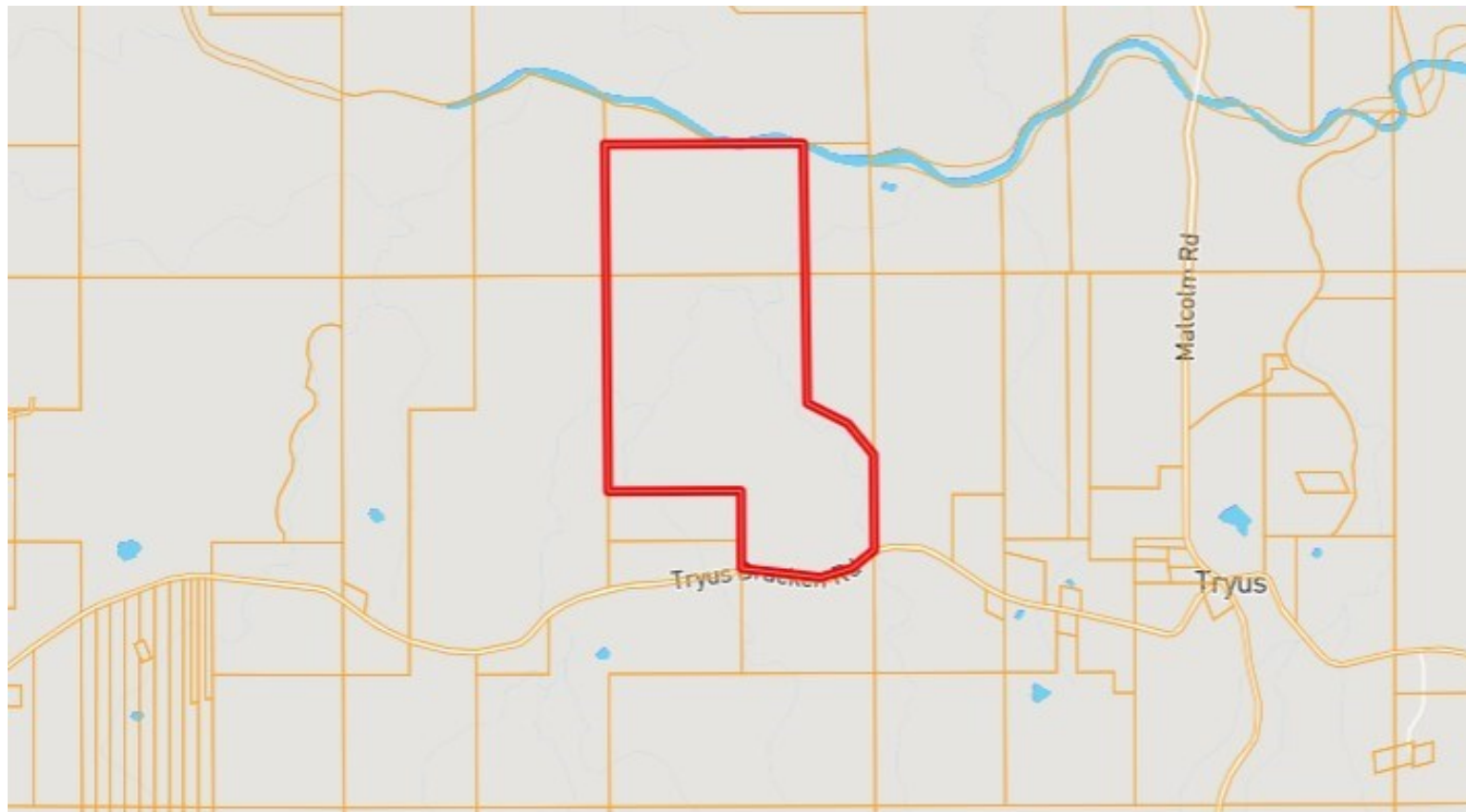


CLIF CANNON, REALTOR®
 Clif@TomSmithLand.com
 601.990.5070 office | 601.565.1070 cell



TomSmithLandandHomes.com

Information is believed to be accurate but not guaranteed.



Ownership Map

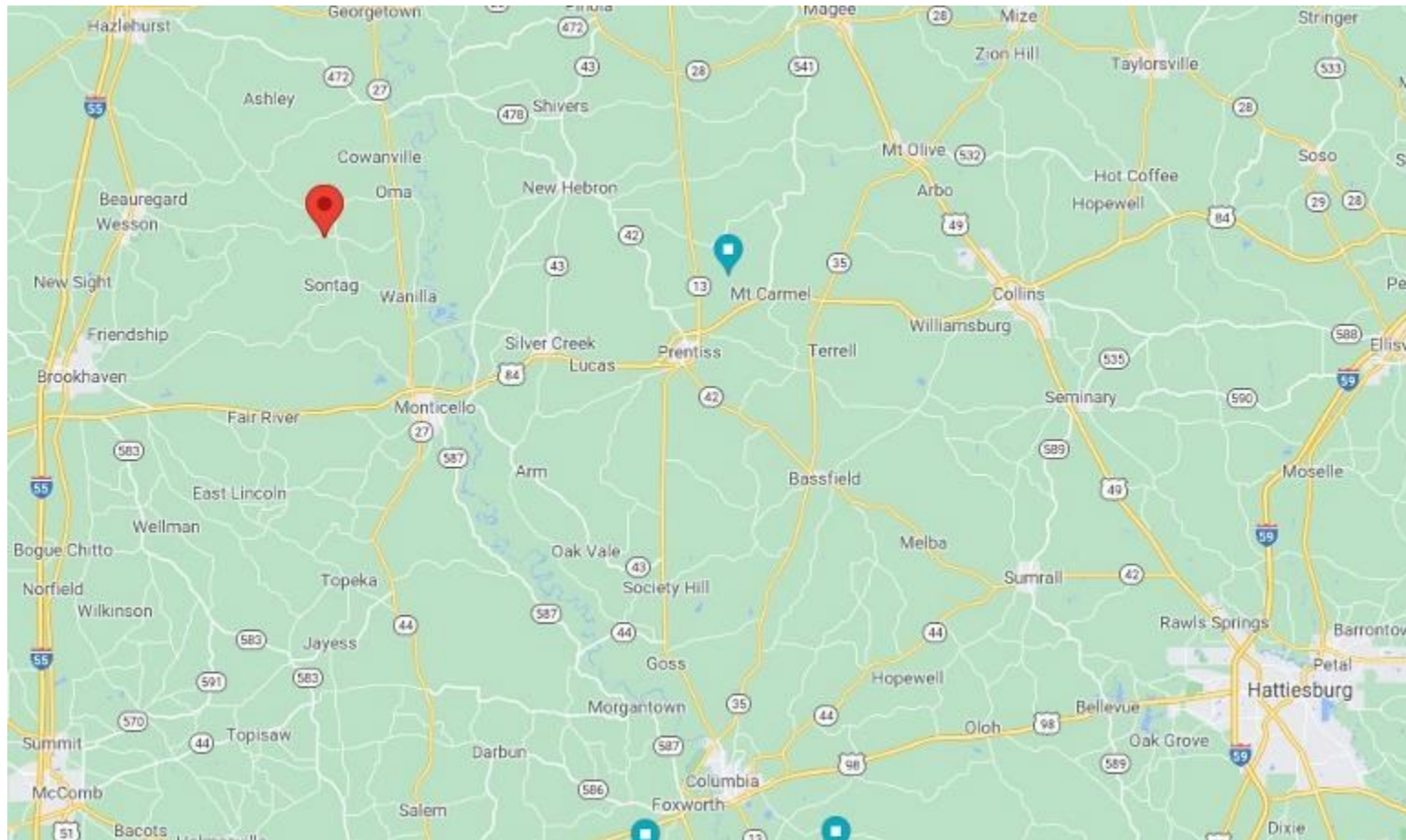


CLIF CANNON, REALTOR®
Clif@TomSmithLand.com
601.990.5070 **office** | 601.565.1070 **cell**



TomSmithLandandHomes.com

Information is believed to be accurate but not guaranteed.



Directional Map

Directions from the intersection of US-84 and MS-27 in Monticello, MS: Travel north on MS-27 for 5.2 miles. Turn left onto Smith Ferry Rd and travel for 3.4 miles. Turn right onto Ras Case Rd and travel for 2.6 miles. Turn left onto Tryus Braken Rd and travel for .7 miles. The property will be on the left.



CLIF CANNON, REALTOR®
 Clif@TomSmithLand.com
 601.990.5070 office | 601.565.1070 cell



TomSmithLandandHomes.com

Information is believed to be accurate but not guaranteed.