

# Home on .75+/- Acres in Adams County, MS



108 Kaiser Lake Rd  
Natchez, MS 39120

**\$175,000**

Looking for a quiet country home? Then look no further than this three bedroom, two bath home on .75+/- acres in Adams County, MS. This well maintained brick home is updated with stained concrete floors in the kitchen, living room and hall while the bedrooms have beautiful hardwood floors. The completely remodeled kitchen increases the functionality of the home. Both bathrooms are updated, and the master bathroom has a beautiful walk in shower. An office branches off the spare bedroom to provide solitude while you work. Outside, large live oaks shade the front yard. The carport, hidden from the street, provides plenty of room to park your vehicle while offering plenty of storage for other items. A covered back porch, large enough for family gatherings, completes this property. Call Clif Cannon to schedule a showing today!



*call me today!*

**CLIF CANNON, REALTOR®**  
Clif@TomSmithLand.com  
601.990.5070 office | 601.565.1070 cell



**TomSmithLandandHomes.com**

Information is believed to be accurate but not guaranteed.



**CLIF CANNON**, REALTOR®  
 Clif@TomSmithLand.com  
 601.990.5070 office | 601.565.1070 cell



**TomSmithLandandHomes.com**

Information is believed to be accurate but not guaranteed.



**CLIF CANNON**, REALTOR®

Clif@TomSmithLand.com

601.990.5070 office | 601.565.1070 cell



Expect More. Get More.

**TomSmithLandandHomes.com**

Information is believed to be accurate but not guaranteed.



Aerial Map



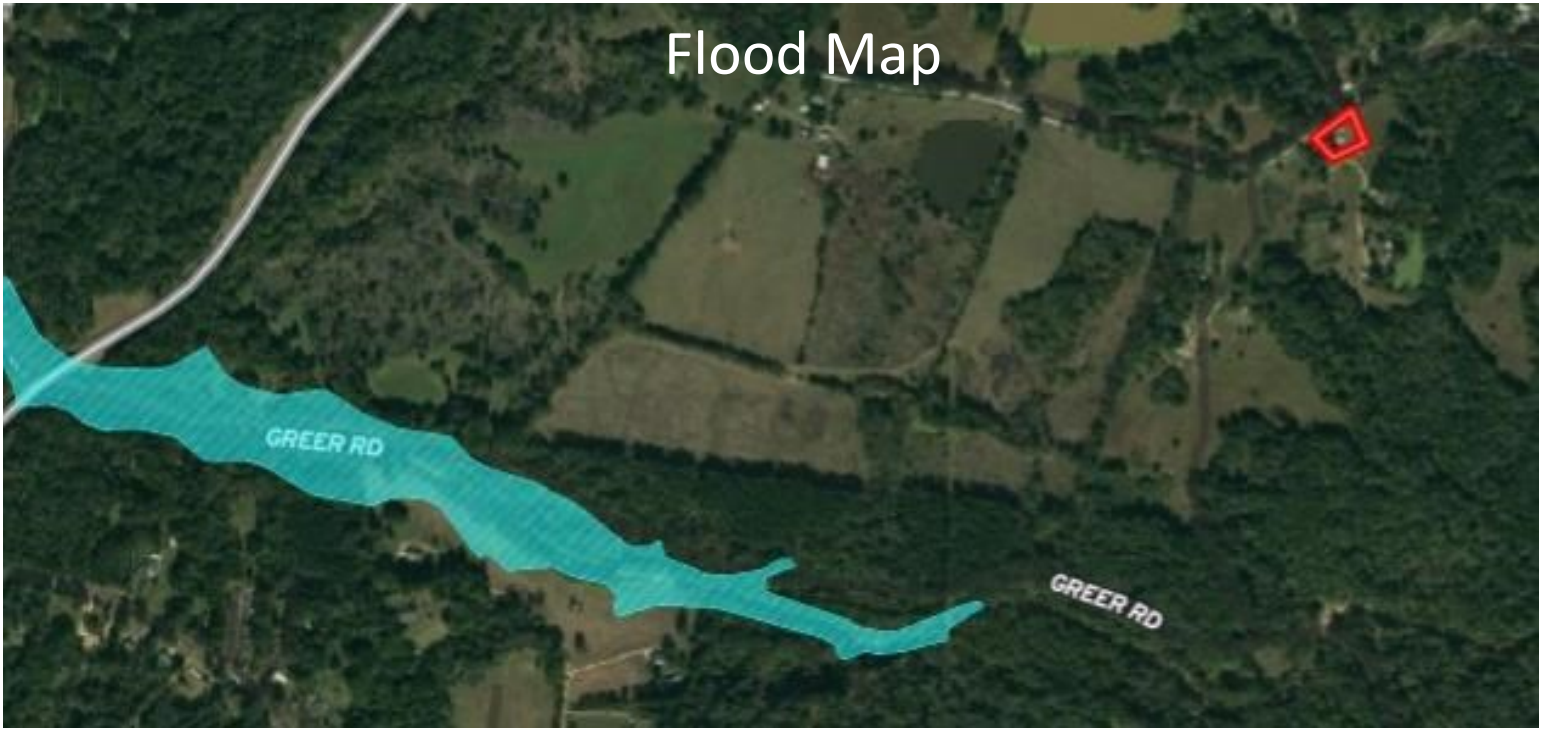
**CLIF CANNON**, REALTOR®  
Clif@TomSmithLand.com  
601.990.5070 office | 601.565.1070 cell



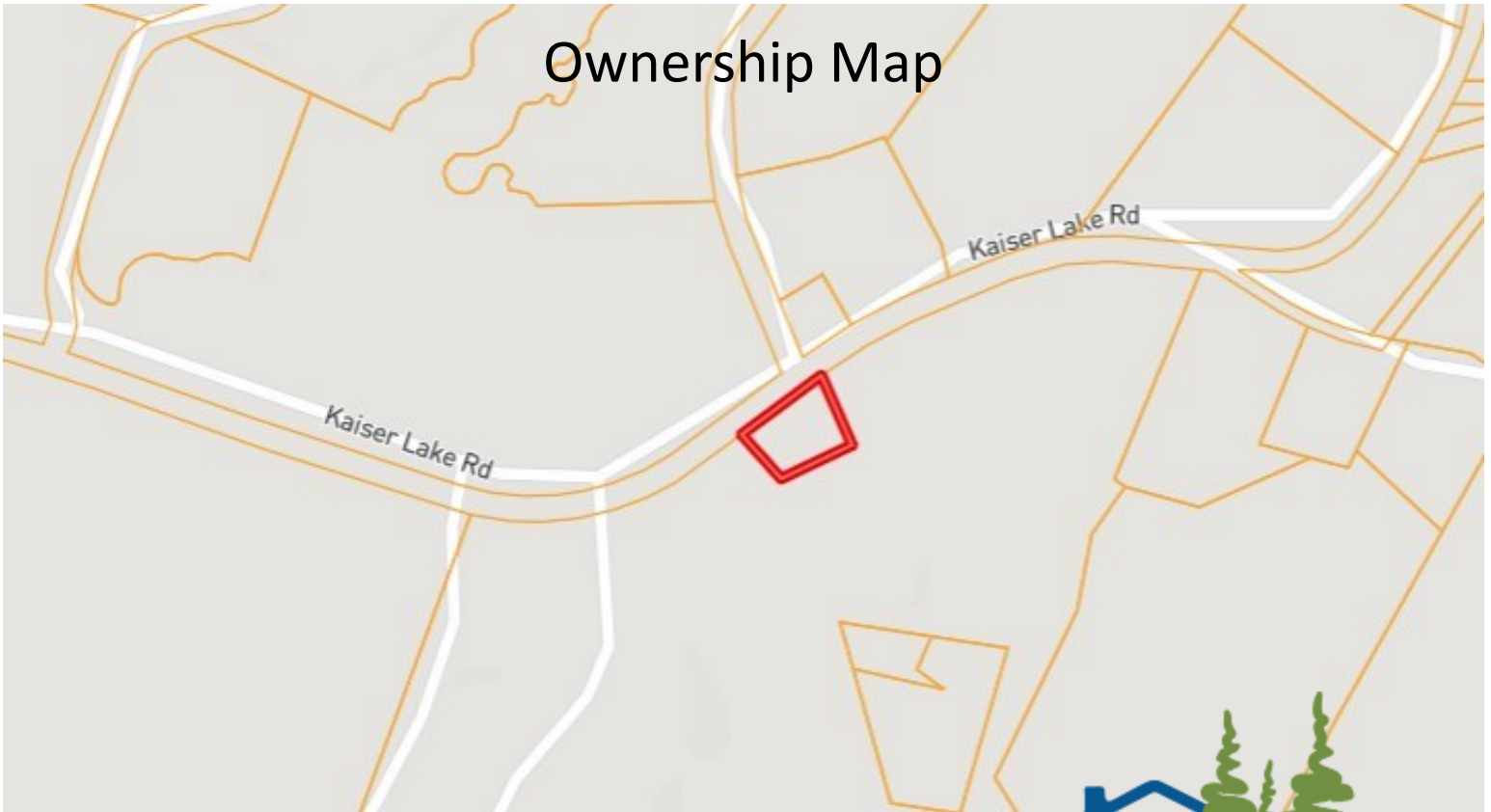
**TomSmithLandandHomes.com**

Information is believed to be accurate but not guaranteed.

# Flood Map



# Ownership Map



**CLIF CANNON**, REALTOR®  
Clif@TomSmithLand.com  
601.990.5070 office | 601.565.1070 cell



**TomSmithLandandHomes.com**

Information is believed to be accurate but not guaranteed.



## Directional Map

Directions from the Intersection of US-61 and US-84 in Washington, MS: Travel north on U.S. 61 for 1.3 miles. Turn right onto Powlett Road and travel for .4 miles. Turn right onto Kaiser Lake Rd and travel for 1.1 miles. The property will be on the right.

108 Kaiser Lake Rd

Natchez, MS 39120



**CLIF CANNON**, REALTOR®  
Clif@TomSmithLand.com  
601.990.5070 office | 601.565.1070 cell



**TomSmithLandandHomes.com**

Information is believed to be accurate but not guaranteed.