

2.78+/- Acre Residential Lot Pontotoc County, MS



\$30,040

Still looking for the house place of your hopes and dreams? Look at this 2.78+/- lot in Reeder Hill Lake Subdivision in Pontotoc County, MS. The land is just minutes to Toyota Manufacturing of North Mississippi and convenient to Oxford, Tupelo, and New Albany. The cleared and leveled lot offers lake access with all utilities established including MaxxSouth Internet. HOA dues are \$150 annually and require 1400 sq ft. minimum. The homesite is in the North Pontotoc School District. Call Steven Havens today! Owner /Agent .

Directions From Sherman, MS: Travel south on Hwy 9 for 1.2 miles. Turn right onto MS HWY 9 and travel 6.9 miles to Reeder Hill Rd. Turn right onto Reeder Hill Rd and travel 1.7 miles to Shell Dr on the right. Follow Shell Dr for .5 miles The property will be on your right. 560 Evans Drive Pontotoc MS 38863.

[GOOGLE MAP HERE](#)



Call me today!

STEVEN HAVENS, REALTOR®
Steven@TomSmithLand.com

662.268.6333 office | 662.871.9326 cell



TomSmithLandandHomes.com

Information is believed to be accurate but not guaranteed.



Call me today!

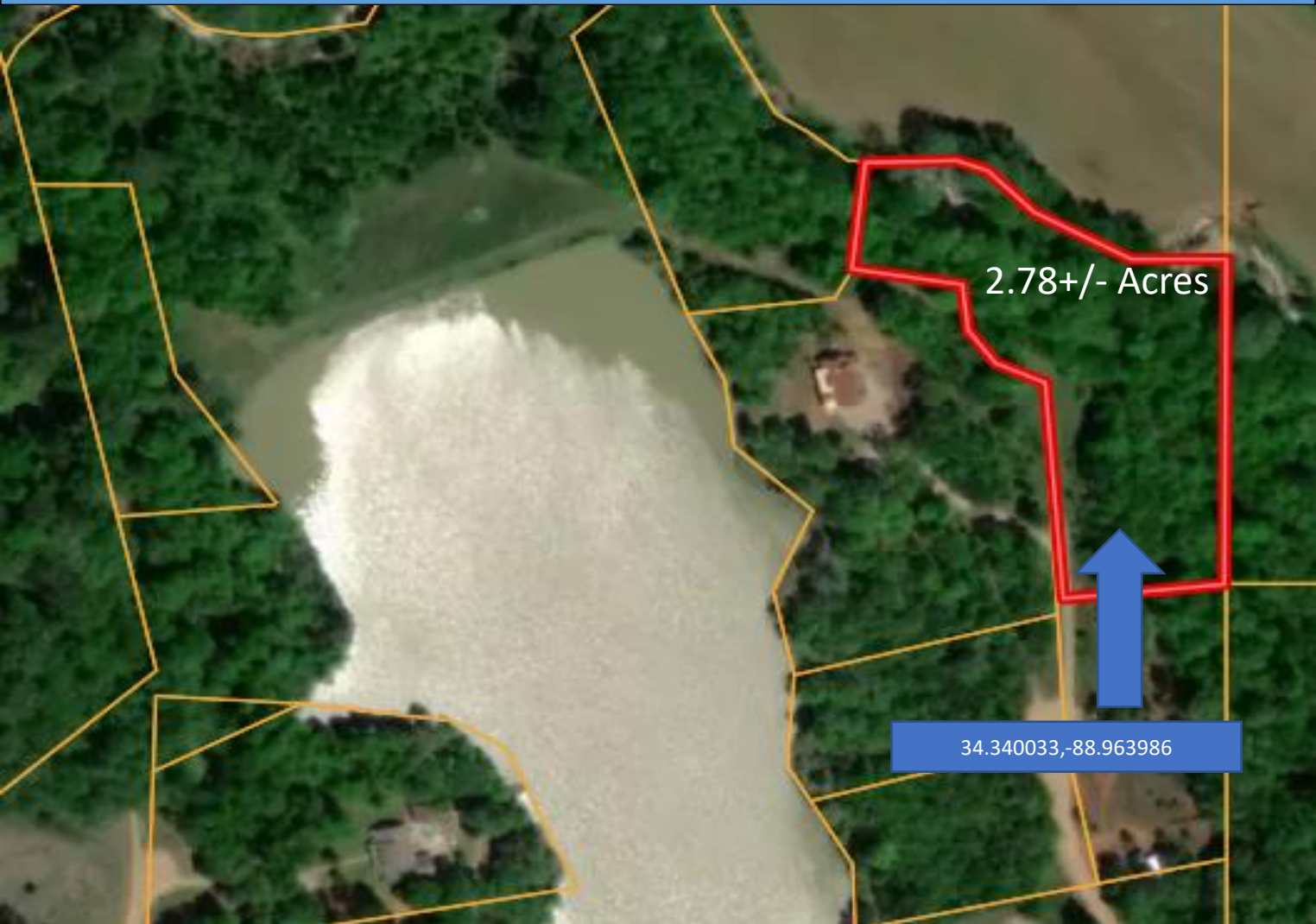
STEVEN HAVENS, REALTOR®
Steven@TomSmithLand.com
662.268.6333 office | 662.871.9326 cell



TomSmithLandandHomes.com

Information is believed to be accurate but not guaranteed.

Aerial Map



Call me today!

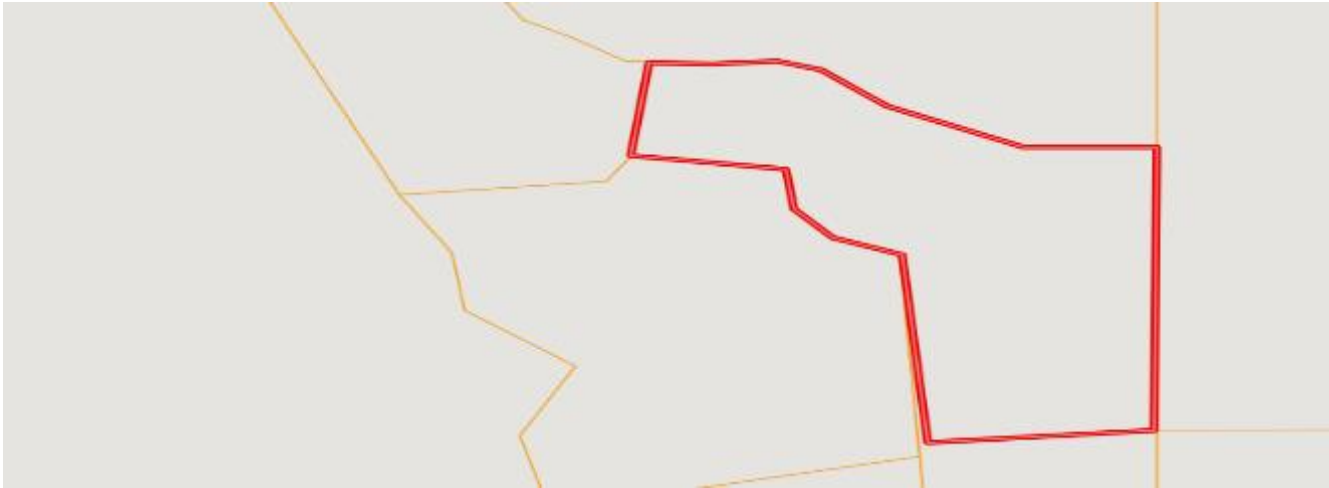
STEVEN HAVENS, REALTOR®
Steven@TomSmithLand.com
662.268.6333 office | 662.871.9326 cell



TomSmithLandandHomes.com

Information is believed to be accurate but not guaranteed.

Ownership Map



Topo Map



2011-2020
BEST
BROKERAGES

Call me today!

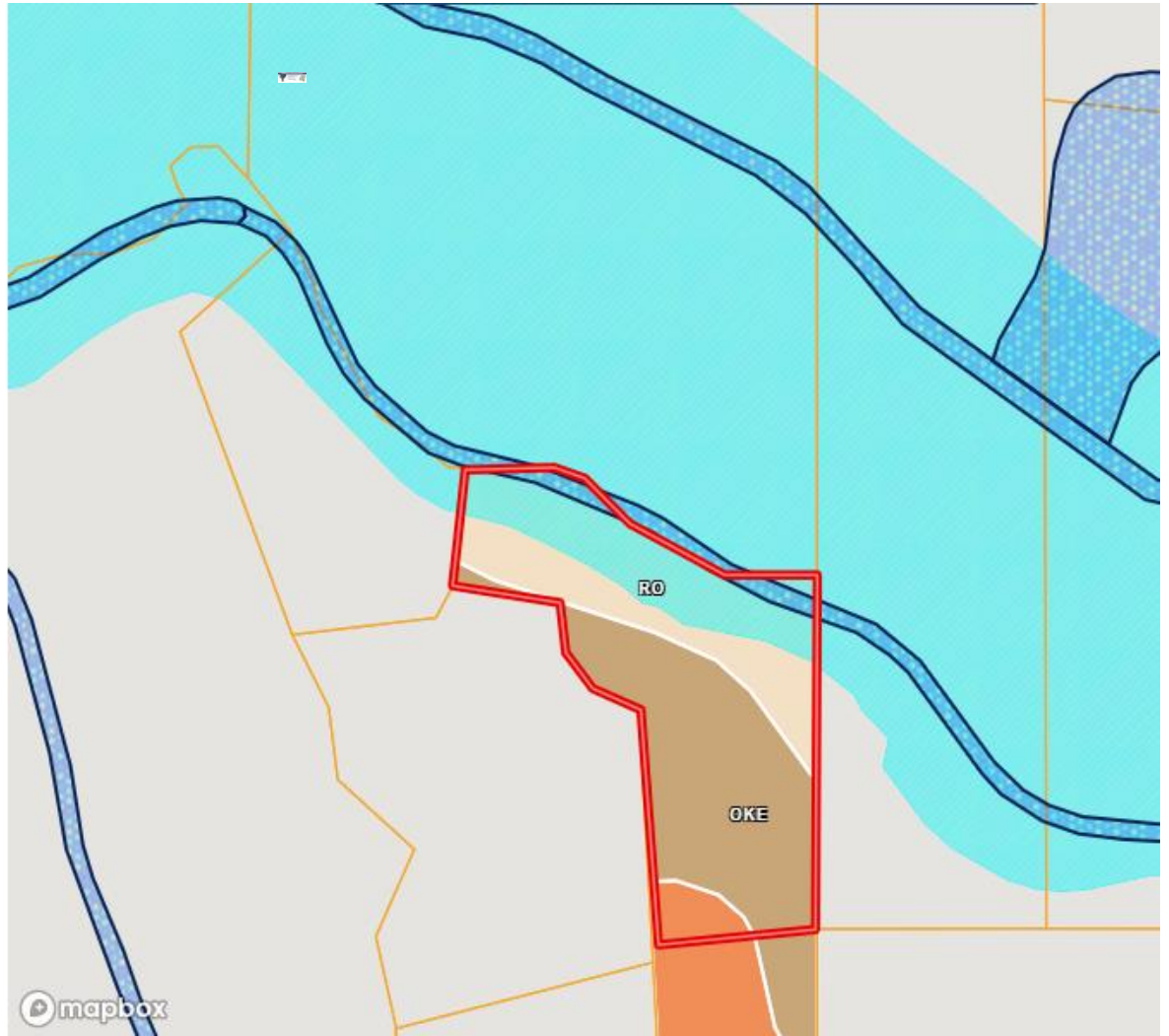
STEVEN HAVENS, REALTOR®
Steven@TomSmithLand.com
662.268.6333 office | 662.871.9326 cell



TomSmithLandandHomes.com

Information is believed to be accurate but not guaranteed.

Flood Zone Map



Call me today!

STEVEN HAVENS, REALTOR®
Steven@TomSmithLand.com
662.268.6333 office | 662.871.9326 cell



TomSmithLandandHomes.com

Information is believed to be accurate but not guaranteed.

Directional Map



Directions From Sherman, MS: Travel south on Hwy 9 for 1.2 miles. and travel 6.9 miles to Reeder Hill Rd. Turn right onto Reeder Hill Rd and travel 1.7 miles to Shell Dr. Follow Shell Dr for .5 miles. The property will be on your right. 560 Evans Drive Pontotoc MS 38863



Call me today!

STEVEN HAVENS, REALTOR®
Steven@TomSmithLand.com
662.268.6333 office | 662.871.9326 cell



TomSmithLandandHomes.com

Information is believed to be accurate but not guaranteed.