

Charming Country Home on 1.5+/- Acres Lincoln County, MS



1109 S First Street Brookhaven, MS 39601

This 1,238+/- SqFt three bed, two bath home is located on 1.5+/- acres, conveniently within the Brookhaven city limits and just minutes from Interstate 55. The home has a country charm that is hard to find inside the city from its beautiful wood exterior to the giant oaks that surround it. Around the home are three out buildings and a carport. When you enter the front door you arrive in the spacious living room directly connected to a secondary sitting room. The secondary sitting room has a gas log fire place and is currently being used as an office space but the possibilities are nearly endless, including expansion of the current living room. The kitchen is spacious and has breakfast nook sitting advantageously centered. At this price this home on 1.5+/- acres is a must see, schedule your tour today. (Additional 34.5+- acres available) Give Blake a call today to view this home!

Directions From Interstate 55 Exit 38 Brookhaven, MS: Travel East on Hwy 84 for 2.3 miles turning left onto Highway 583/S First Street. Travel North on Highway 583/S First Street and the destination will be on your right in about 1 mile.



call me today!

BLAKE SASSER, REALTOR®
Blake@TomSmithLand.com
601.990.5070 office | 601-757-5027 cell
Licensed in MS and LA



TomSmithLandandHomes.com

Information is believed to be accurate but not guaranteed.



LandReport
2010-2021
AMERICA'S
BEST
BROKERAGES



Call me today!

BLAKE SASSER, REALTOR®

Blake@TomSmithLand.com

601.990.5070 office | 601-757-5027 cell

Licensed in MS and LA



Expect More. Get More.

TomSmithLandandHomes.com

Information is believed to be accurate but not guaranteed.



Call me today!

BLAKE SASSER, REALTOR®

Blake@TomSmithLand.com

601.990.5070 office | 601-757-5027 cell

Licensed in MS and LA



Expect More. Get More.



TomSmithLandandHomes.com

Information is believed to be accurate but not guaranteed.



Aerial Map



Call me today!

BLAKE SASSER, REALTOR®

Blake@TomSmithLand.com

601.990.5070 office | 601-757-5027 cell

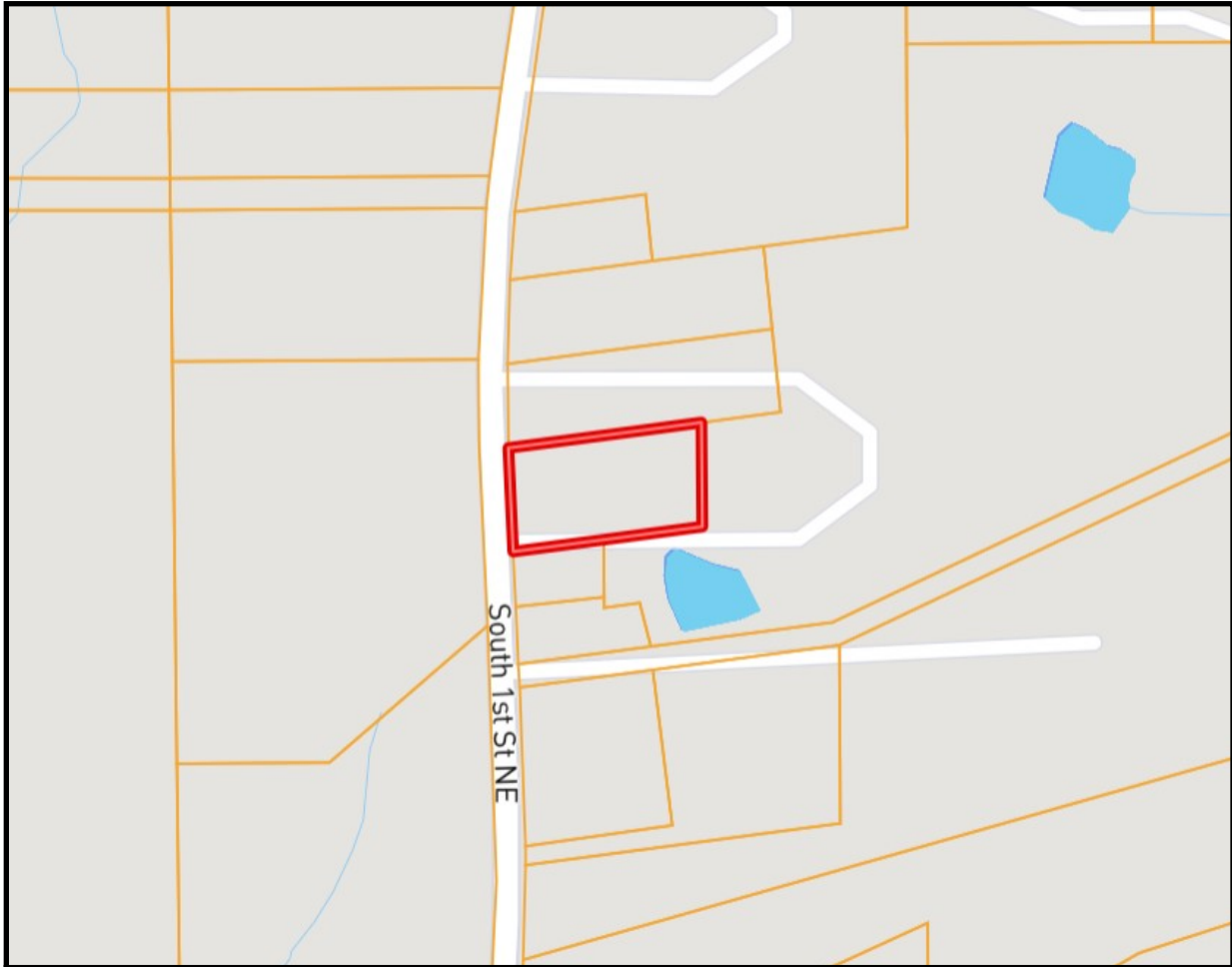
Licensed in MS and LA



Expect More. Get More.

TomSmithLandandHomes.com

Information is believed to be accurate but not guaranteed.



Ownership Map



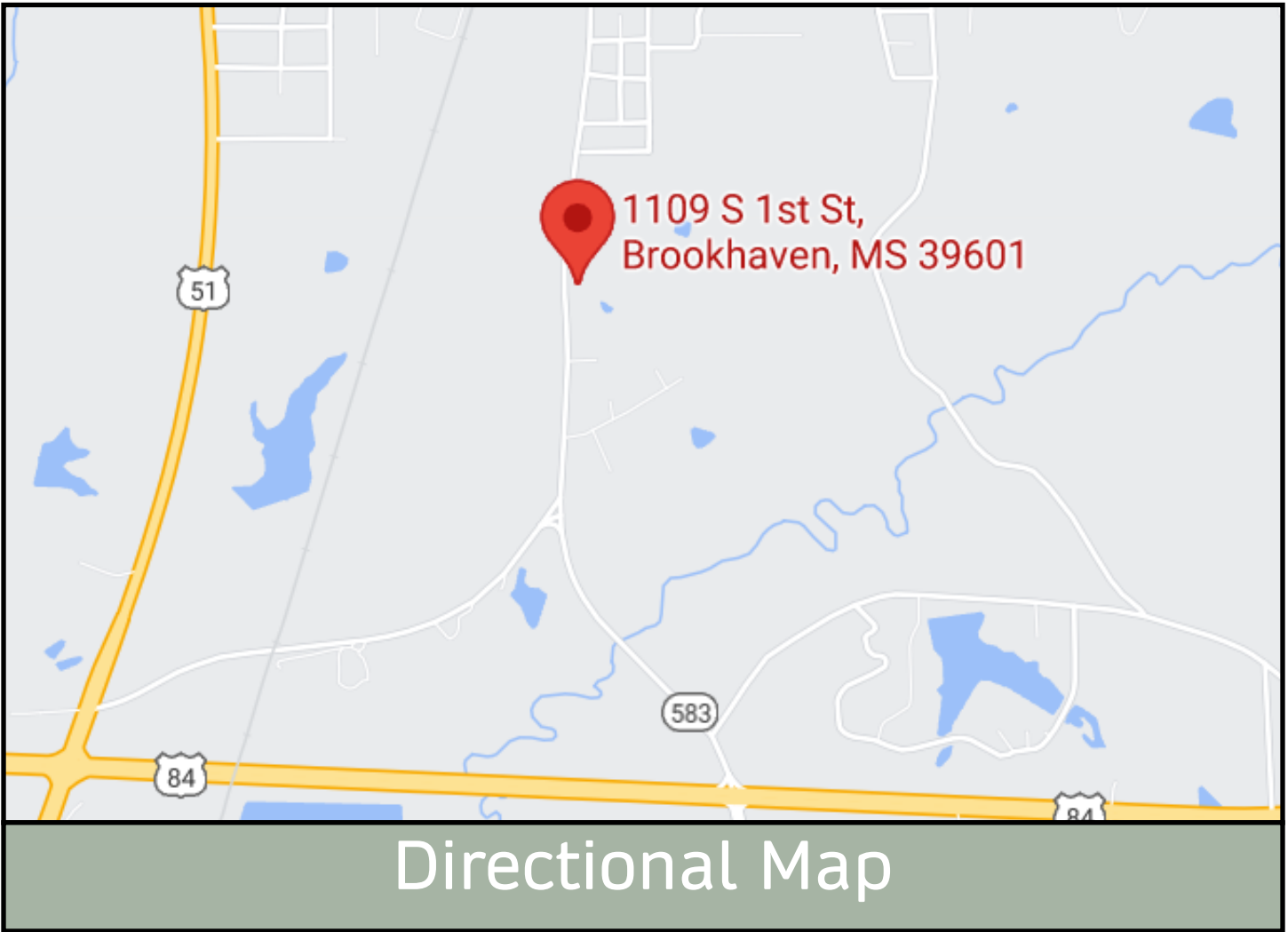
call me today!

BLAKE SASSER, REALTOR®
Blake@TomSmithLand.com
601.990.5070 office | 601-757-5027 cell
Licensed in MS and LA



TomSmithLandandHomes.com

Information is believed to be accurate but not guaranteed.



Directional Map

Directions

From Interstate 55 Exit 38 Brookhaven, MS: Travel East on Hwy 84 for 2.3 miles turning left onto Highway 583/S First Street. Travel North on Highway 583/S First Street and the destination will be on your right in about 1 mile.



call me today!

BLAKE SASSER, REALTOR®
Blake@TomSmithLand.com
601.990.5070 office | 601-757-5027 cell
Licensed in MS and LA



Expect More. Get More.

TomSmithLandandHomes.com

Information is believed to be accurate but not guaranteed.