

Beautiful Home Site on 34.5+/- Acres Lincoln County, MS



Looking for a small, private tract in the Brookhaven city limits, or perhaps the location of your future dream home? This stunning, 34.5+/- acre Lincoln County property offers a diverse stand of timber including mature hardwoods, marketable pine timber, and young pine timber at the rear boundary line. This property features a large pond, and electric is available on site. City sewer and city water are available at the blacktop. This parcel is also well suited for bow hunting whitetails; years ago, a 16-point buck was harvested here with a rifle. The current owner and their neighbors report regular deer sightings in droves. Multiple species of wild game call this place home, including deer and turkey. A limestone drive brings you deep into the property with multiple trails and food plot scattered throughout. The gentle lay of the land makes this an ideal residential development. Call Blake today to schedule a private tour of this diverse tract. Additional acreage is available.

Directions From Exit 38 on I-55 in Brookhaven, MS: Travel east on Hwy 84 for 2.3 miles. Turn left onto Highway 583/S First Street and travel one mile. The destination will be on your right.



call me today!

BLAKE SASSER, REALTOR®
Blake@TomSmithLand.com
601.990.5070 office | 601-757-5027 cell
Licensed in MS and LA



TomSmithLandandHomes.com

Information is believed to be accurate but not guaranteed.



call me today!

BLAKE SASSER, REALTOR®

Blake@TomSmithLand.com

601.990.5070 **office** | 601-757-5027 **cell**

Licensed in MS and LA



Expect More. Get More.

TomSmithLandandHomes.com

Information is believed to be accurate but not guaranteed.



call me today!

BLAKE SASSER, REALTOR®

Blake@TomSmithLand.com

601.990.5070 office | 601-757-5027 cell

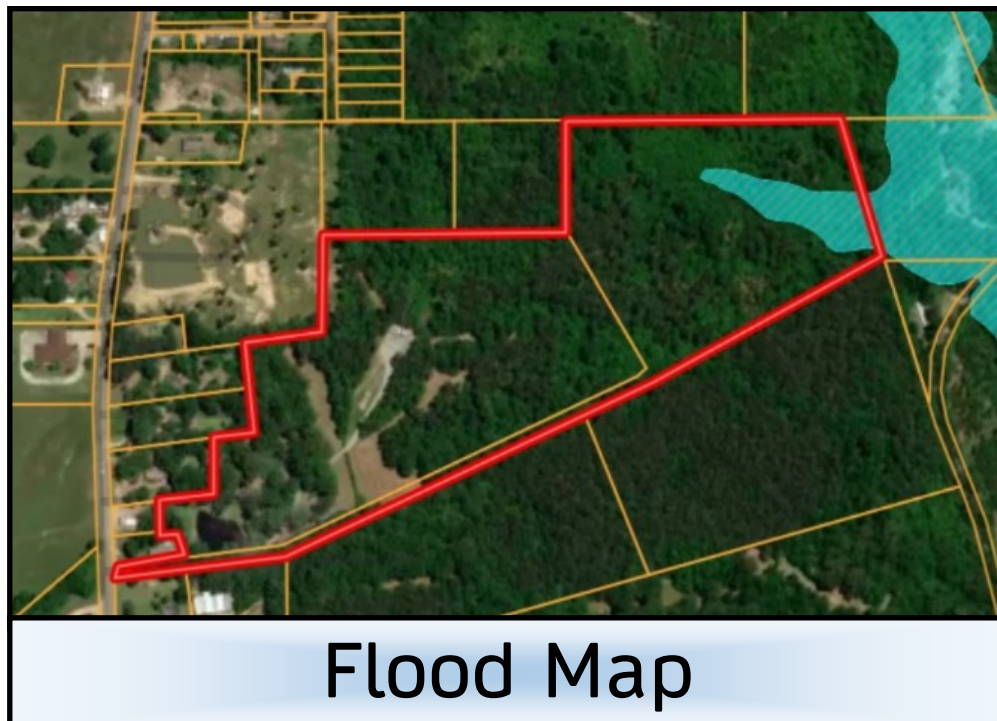
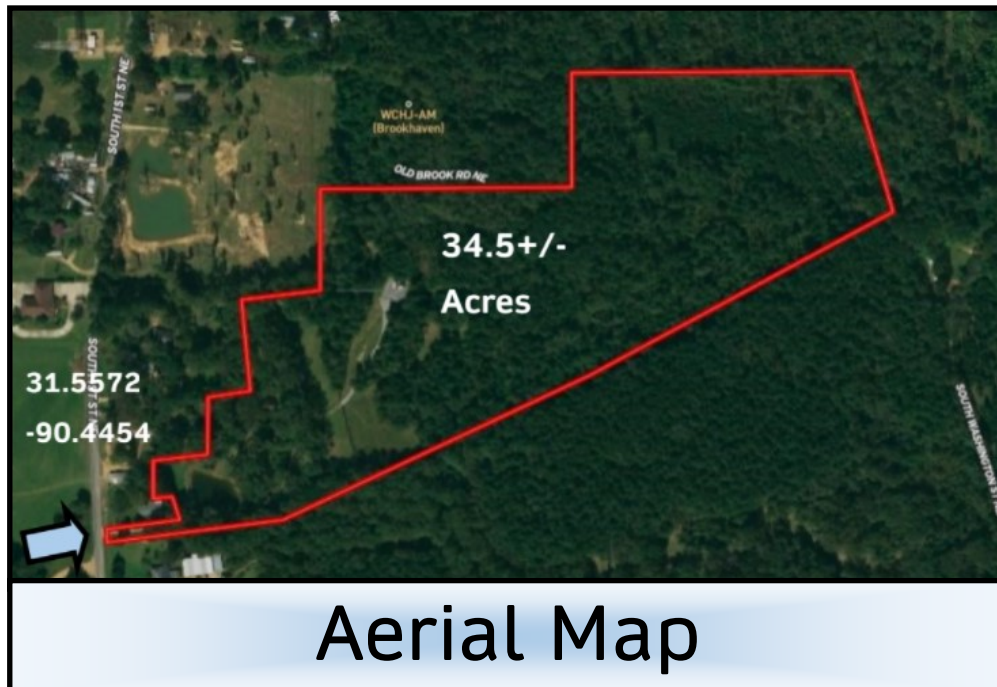
Licensed in MS and LA



Expect More. Get More.

TomSmithLandandHomes.com

Information is believed to be accurate but not guaranteed.



call me today!

BLAKE SASSER, REALTOR®

Blake@TomSmithLand.com

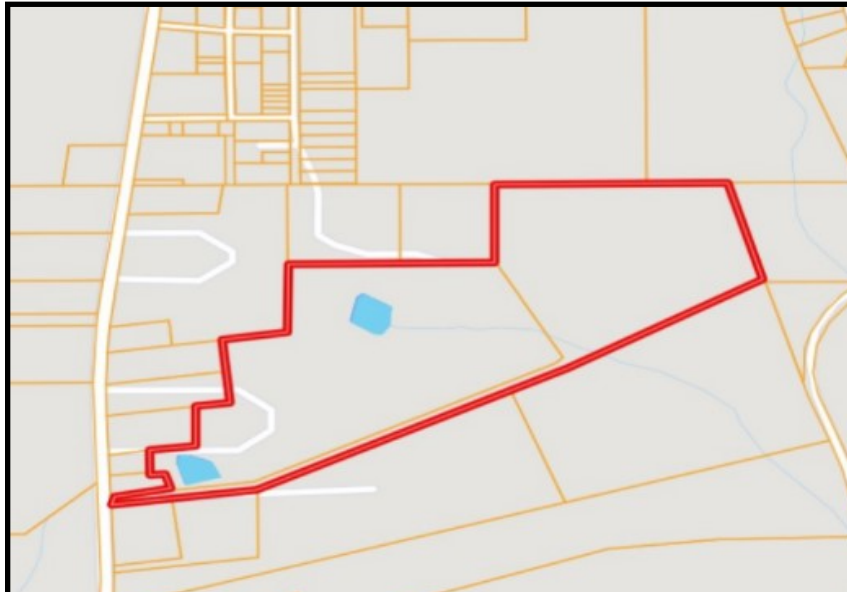
601.990.5070 office | 601-757-5027 cell

Licensed in MS and LA

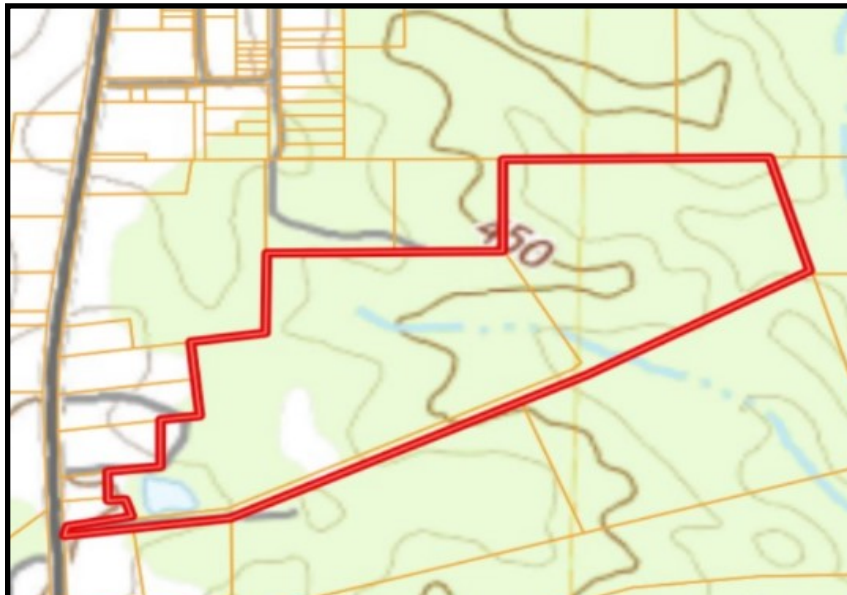


TomSmithLandandHomes.com

Information is believed to be accurate but not guaranteed.



Ownership Map



Topography Map



call me today!

BLAKE SASSER, REALTOR®

Blake@TomSmithLand.com

601.990.5070 **office** | 601-757-5027 **cell**

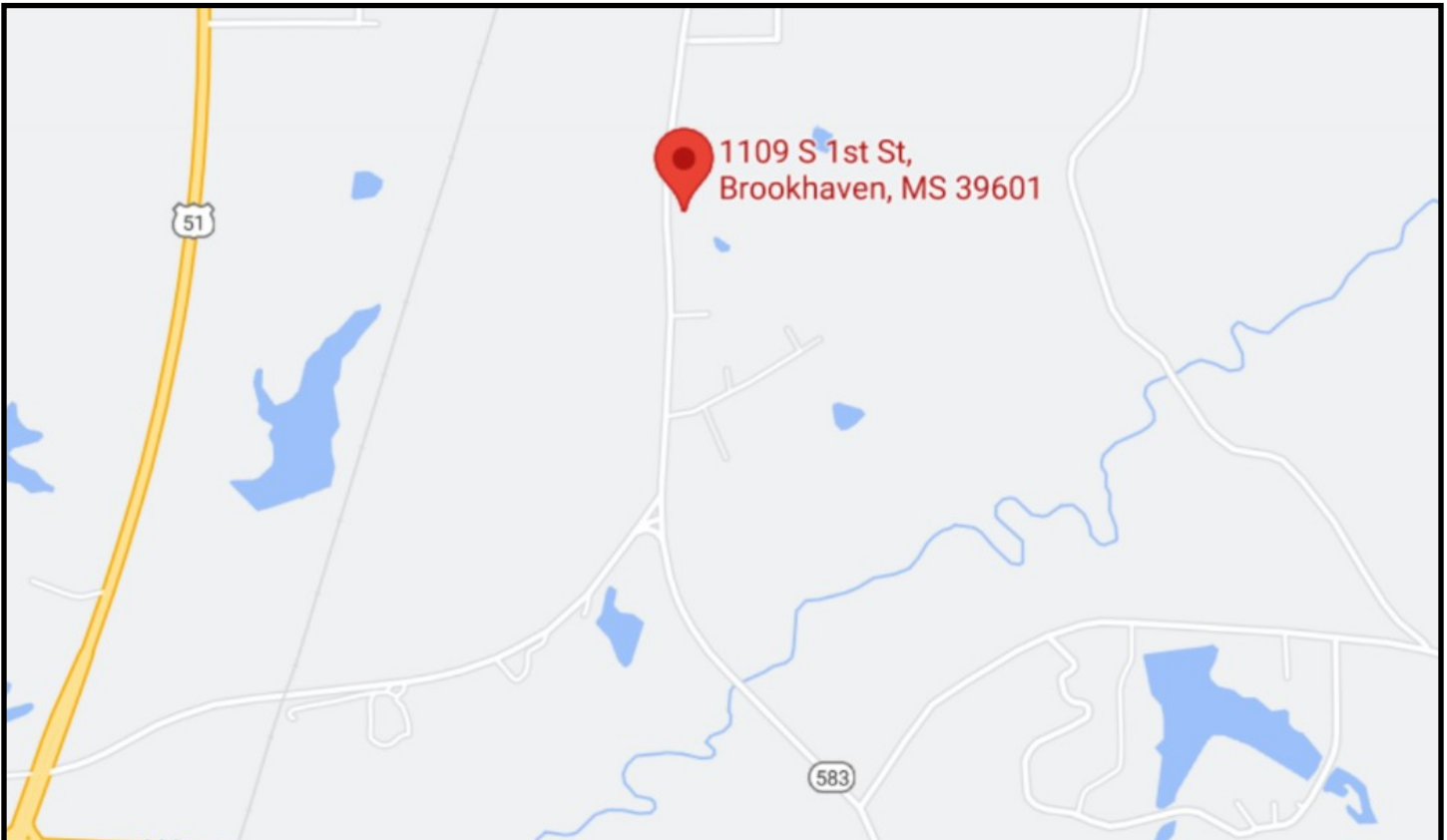
Licensed in MS and LA



Expect More. Get More.

TomSmithLandandHomes.com

Information is believed to be accurate but not guaranteed.



Directional Map

Directions From Exit 38 on I-55 in Brookhaven, MS: Travel east on Hwy 84 for 2.3 miles. Turn left onto Highway 583/S First Street and travel one mile. The destination will be on your right.



call me today!

BLAKE SASSER, REALTOR®

Blake@TomSmithLand.com

601.990.5070 **office** | 601-757-5027 **cell**

Licensed in MS and LA



Expect More. Get More.

TomSmithLandandHomes.com

Information is believed to be accurate but not guaranteed.