



Beautiful Home on Well Manicured 3+/-Acres Lincoln County, MS



\$339,900

1299 Smith Lake Road Brookhaven, MS 39601

What a beautiful property in Lincoln County, MS...just outside of town to enjoy the country side, yet close enough to Brookhaven for all the conveniences! A four bedroom, two bath home is situated on 3+/- well-manicured acres, tucked off the road. The spacious home features fresh paint, 9 foot ceilings, brand new floors, plantation shutters, a spacious laundry room and a newly installed 5 ton HVAC unit. Enjoy an abundance of natural light in the kitchen and dining area. If cathedrals ceilings are what your heart desires, look no further. An additional room provides the opportunity for an office, additional bedroom, playroom, the possibilities are endless! The front porch screams "southern living"! This property also includes a 1,000+/- square foot workshop, two small sheds, and a fenced-in area for the kids or fur babies to play. Contact Sabrina today to schedule your private showing!

Directions from the North Brookhaven Exit on Interstate 55: After taking the exit, travel east. At the red light, turn left onto Hwy 51 and then a right on Industrial Park Drive. Continue straight, at the stop sign. Just after the civic center, turn left onto Smith Lake Road. The home will be on the left.



LandReport
2010-2021
AMERICA'S
BEST
BROKERAGES

call me today!

SABRINA WOLFE, REALTOR®
Sabrina@TomSmithHomes.com
601.990.5070 office | 601.754.3763 cell



Expect More. Get More.

TomSmithLandandHomes.com

Information is believed to be accurate but not guaranteed.



Call me today!

SABRINA WOLFF, REALTOR®
Sabrina@TomSmithHomes.com
601.990.5070 office | 601.754.3763 cell



TomSmithLandandHomes.com

Information is believed to be accurate but not guaranteed.



2010-2021
AMERICAN
BEST
BROKERAGES

Call me today!

SABRINA WOLFE, REALTOR®
Sabrina@TomSmithHomes.com
601.990.5070 office | 601.754.3763 cell



Expect More. Get More.

TomSmithLandandHomes.com

Information is believed to be accurate but not guaranteed.



Call me today!

SABRINA WOLFE, REALTOR®
Sabrina@TomSmithHomes.com
601.990.5070 office | 601.754.3763 cell



TomSmithLandandHomes.com

Information is believed to be accurate but not guaranteed.

Aerial Map



LandReport
2010-2021
AMERICA'S
BEST
BROKERAGES

Call me today!

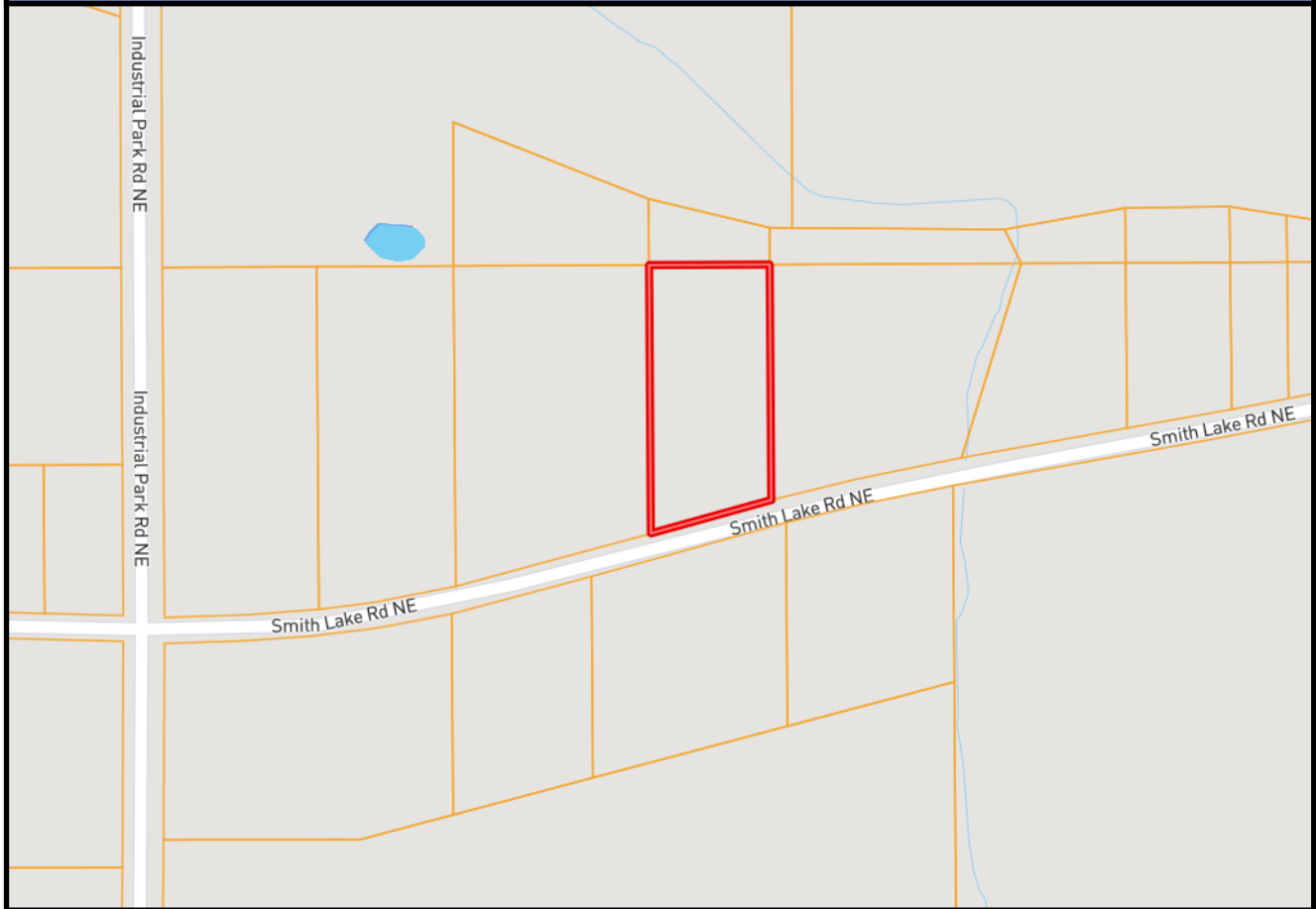
SABRINA WOLFF, REALTOR®
Sabrina@TomSmithHomes.com
601.990.5070 office | 601.754.3763 cell



TomSmithLandandHomes.com

Information is believed to be accurate but not guaranteed.

Ownership Map



LandReport
2010-2021
AMERICAN
BEST
BROKERAGES

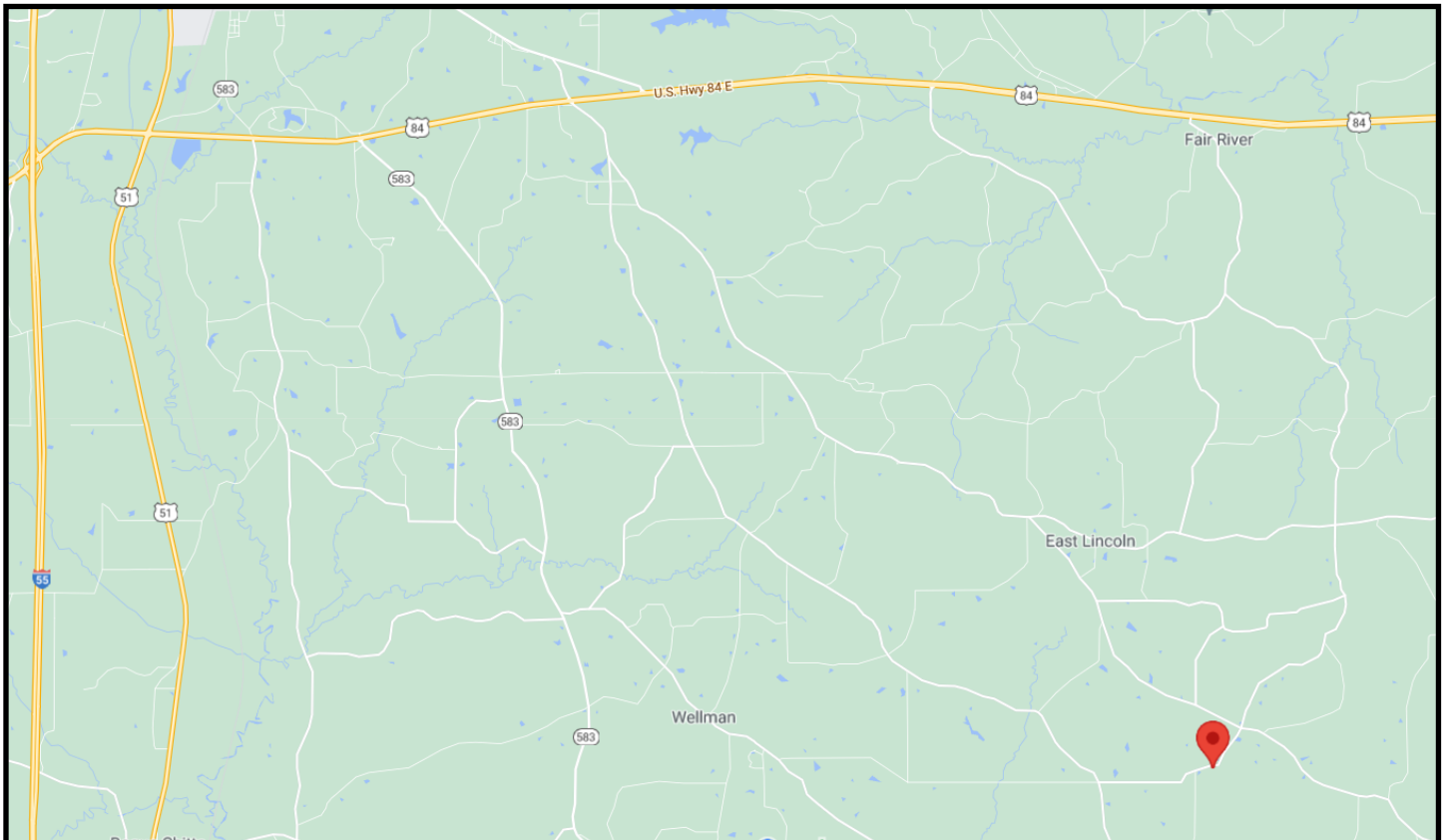
Call me today!

SABRINA WOLFF, REALTOR®
Sabrina@TomSmithHomes.com
601.990.5070 office | 601.754.3763 cell



TomSmithLandandHomes.com

Information is believed to be accurate but not guaranteed.



Directional Map

1299 Smith Lake Road Brookhaven, MS 39601



Directions from the North Brookhaven Exit on Interstate 55: After taking the exit, travel east. At the red light, turn left onto Hwy 51 and then a right on Industrial Park Drive. Continue straight, at the stop sign. Just after the civic center, turn left onto Smith Lake Road. The home will be on the left.



Call me today!

SABRINA WOLFF, REALTOR®
Sabrina@TomSmithHomes.com
601.990.5070 office | 601.754.3763 cell



TomSmithLandandHomes.com

Information is believed to be accurate but not guaranteed.