



*Spacious Home on 6.19+/- Acres
Enterprise School District
Lincoln County, MS*



\$172,500

3691 Pleasant Grove Road SE Ruth, MS 39662

LOOK AT THIS NEWLY LISTED PROPERTY IN THE ENTERPRISE SCHOOL DISTRICT!! If you are searching for a home with acreage in Lincoln County, MS, look no more! This 2,200+/- square foot, three bedroom, two bath home, situated on 6.19+/- acres, is calling your name! The split floor plan offers spacious living throughout. An oversized master suite features a massive walk-in closet, deep tub for soaking and a walk-in tile and glass shower. The main living area, with a wood-burning fireplace, is central to the kitchen and dining rooms. The massive kitchen island provides seating, storage and an abundance of prep space for cooking and entertaining. This kitchen was made for dancing, lacking nothing, with wall to wall windows for a beautiful view and natural lighting. Take note of the appliance pantry with a sliding barn door. A secondary living area is an added bonus with many possibilities. The home also features a spacious laundry room and covered back deck. If rain on a tin roof, with privacy and country feel, is what you're looking for, call Sabrina today to schedule a viewing!

Directions from Hwy 583 in Brookhaven, MS: Travel east onto Topisaw Drive for 2 miles. Turn left onto Pleasant Grove Road; at the stop sign, cross over Mallalieu Drive. The property will be on your left.



LandReport
2010-2021
AMERICA'S
BEST
BROKERAGES

call me today!

SABRINA WOLFE, REALTOR®
Sabrina@TomSmithHomes.com
601.990.5070 office | 601.754.3763 cell



Expect More. Get More.

TomSmithLandandHomes.com

Information is believed to be accurate but not guaranteed.



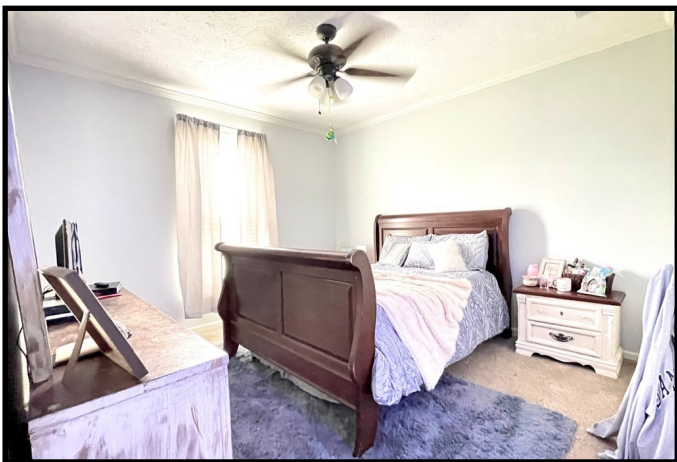
Call me today!

SABRINA WOLFF, REALTOR®
Sabrina@TomSmithHomes.com
601.990.5070 office | 601.754.3763 cell



TomSmithLandandHomes.com

Information is believed to be accurate but not guaranteed.



2010-2021
AMERICAN
BEST
BROKERAGES

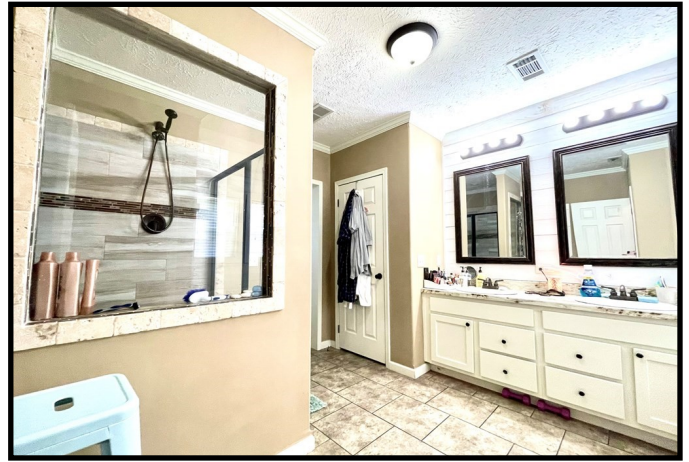
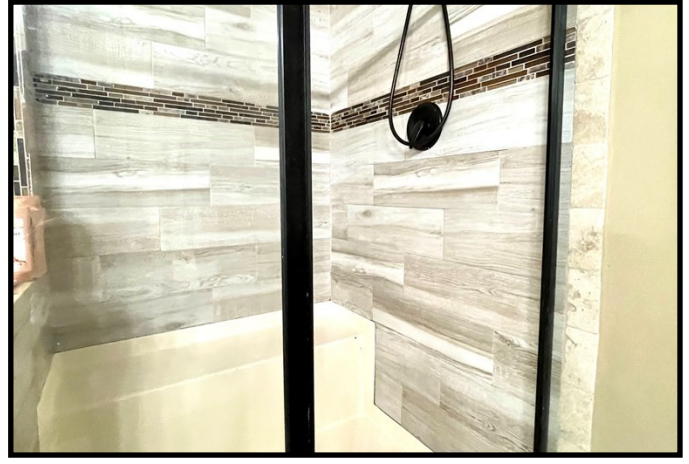
Call me today!

SABRINA WOLFF, REALTOR®
Sabrina@TomSmithHomes.com
601.990.5070 office | 601.754.3763 cell



TomSmithLandandHomes.com

Information is believed to be accurate but not guaranteed.



Call me today!

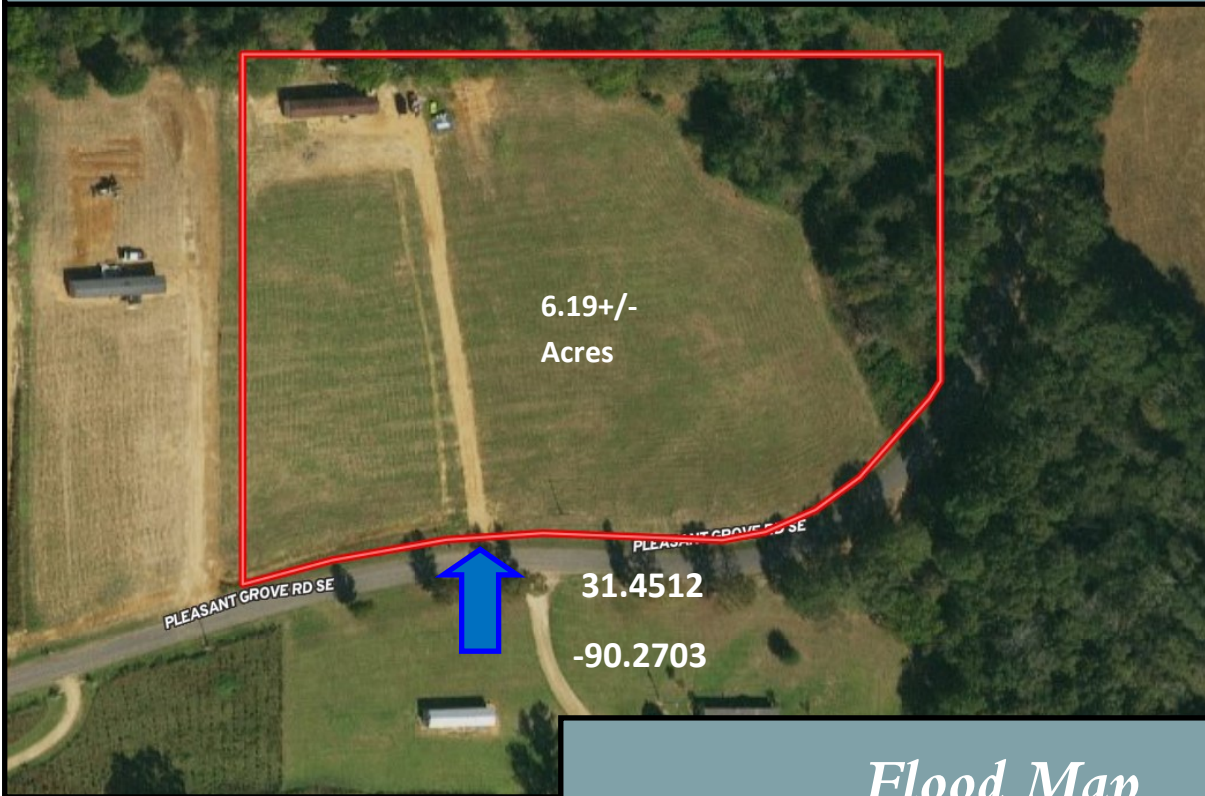
SABRINA WOLFE, REALTOR®
Sabrina@TomSmithHomes.com
601.990.5070 office | 601.754.3763 cell



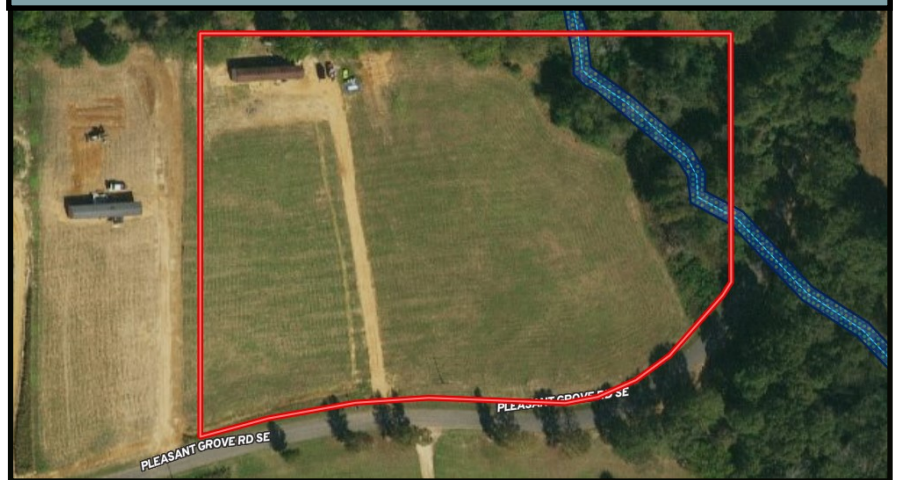
TomSmithLandandHomes.com

Information is believed to be accurate but not guaranteed.

Aerial Map



Flood Map



Call me today!

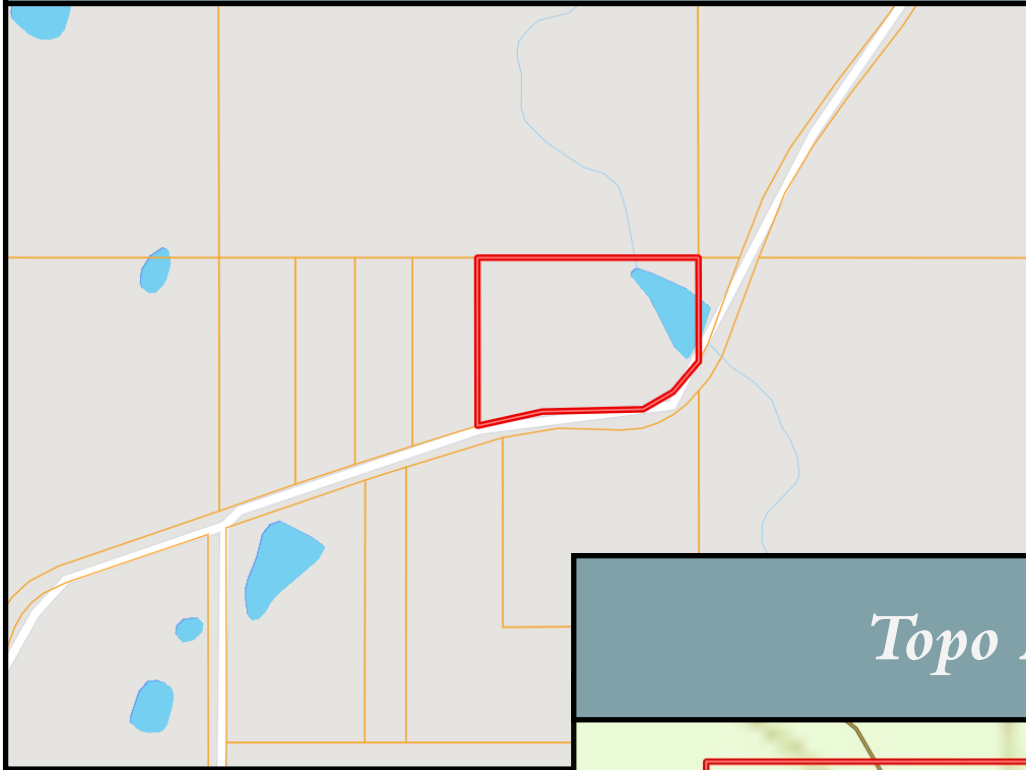
SABRINA WOLFF, REALTOR®
Sabrina@TomSmithHomes.com
601.990.5070 office | 601.754.3763 cell



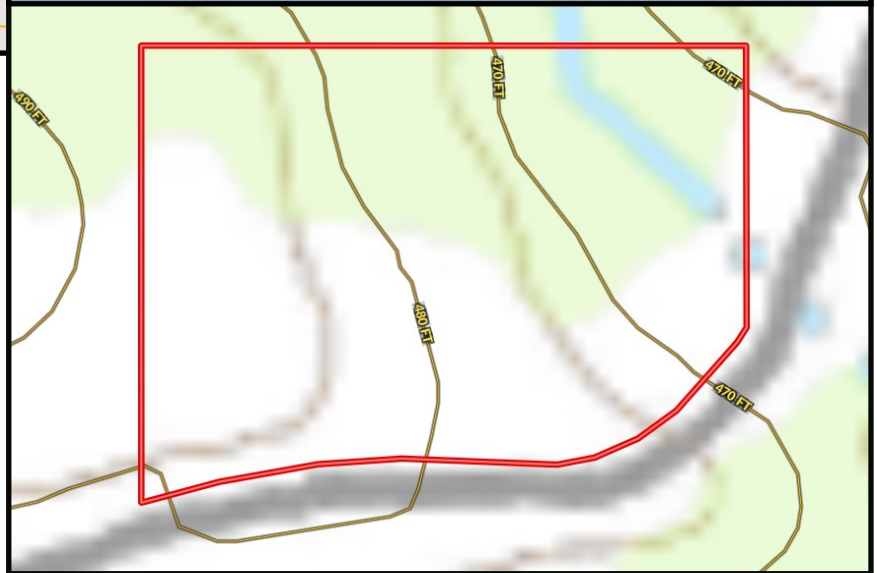
TomSmithLandandHomes.com

Information is believed to be accurate but not guaranteed.

Ownership Map



Topo Map



LandReport
2010-2021
AMERICAN
BEST
BROKERAGES

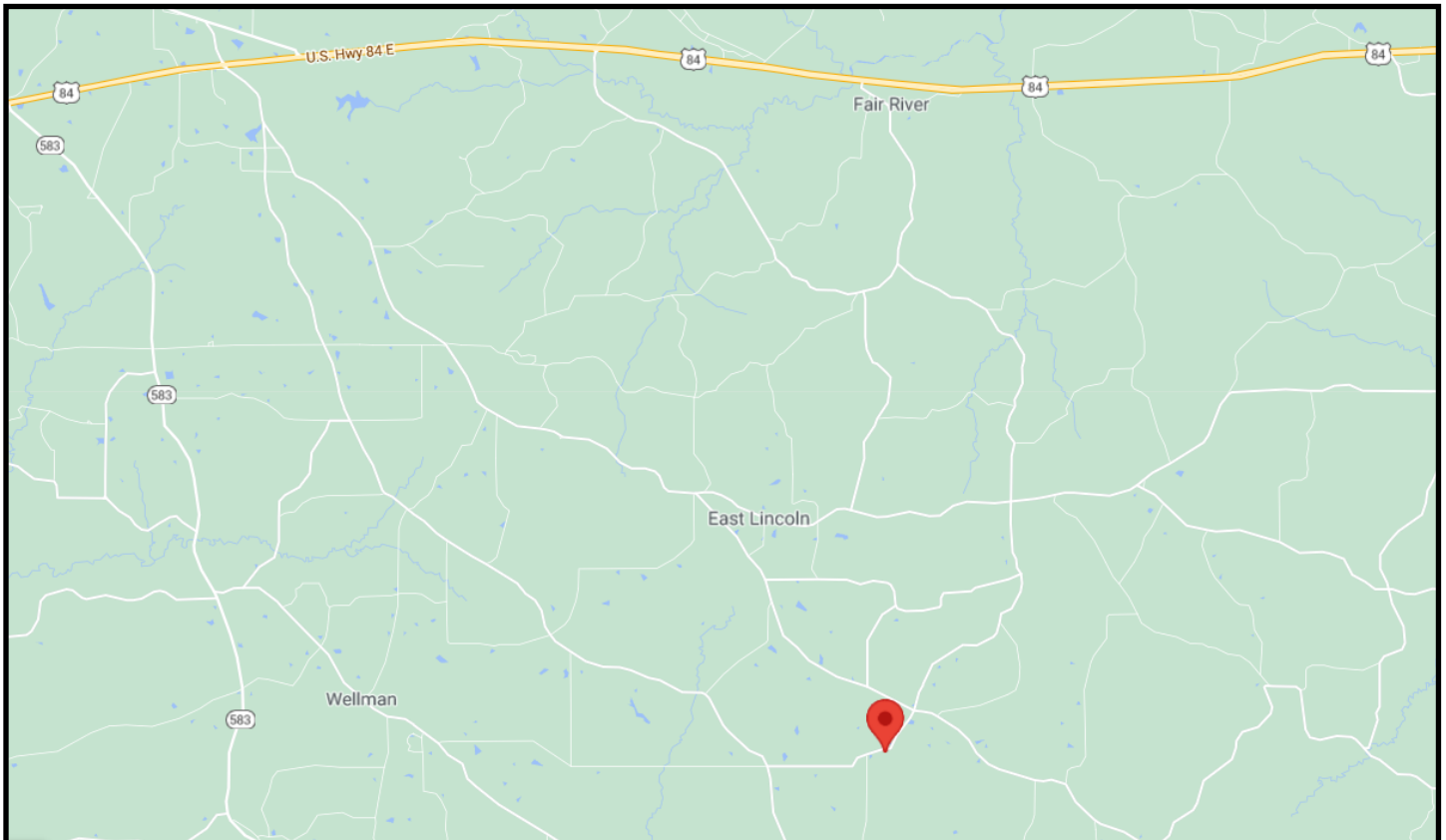
Call me today!

SABRINA WOLFF, REALTOR®
Sabrina@TomSmithHomes.com
601.990.5070 office | 601.754.3763 cell



TomSmithLandandHomes.com

Information is believed to be accurate but not guaranteed.



Directional Map

3691 Pleasant Grove Road SE Ruth, MS 39662

Directions from Hwy 583 in Brookhaven, MS: Travel east onto Topisaw Drive for 2 miles. Turn left onto Pleasant Grove Road; at the stop sign, cross over Mallalieu Drive. The property will be on your left.



call me today!

SABRINA WOLFF, REALTOR®

Sabrina@TomSmithHomes.com

601.990.5070 office | 601.754.3763 cell



Expect More. Get More.



TomSmithLandandHomes.com

Information is believed to be accurate but not guaranteed.