

# 20+/- Acre Homesite Stone County, MS



**3323 Old Hwy 26 Perkinston, MS 39573**

Are you looking for a spot to build your dream home? Check out this 20+/- acre Stone County, MS property situated in Perkinston, just 15 minutes outside of Wiggins. This mixed timber tract offers multiple home sites, ample road frontage on Old Hwy 26, and utilities are available at the road. Whether you're searching for the perfect place to build or just a getaway, this tract is worth a look. Contact Blake today to schedule a showing.

Directions from Exit 29 on I-59S: Turn left onto MS-26 E and travel 9.6 miles to Magnolia Road. Turn right and travel 5.6 miles; make a sharp right turn onto Old Hwy 26. In approximately .5 miles, the property will be on your right.



*Call me today!*

**BLAKE SASSER, REALTOR®**  
Blake@TomSmithLand.com  
601.990.5070 office | 601-757-5027 cell  
Licensed in MS and LA



Expect More. Get More.

**TomSmithLandandHomes.com**

Information is believed to be accurate but not guaranteed.



**BLAKE SASSER**, REALTOR®  
Blake@TomSmithLand.com  
601.990.5070 office | 601-757-5027 cell  
Licensed in MS and LA

**TomSmithLandandHomes.com**

Information is believed to be accurate but not guaranteed.

# Aerial Map



# Flood Map

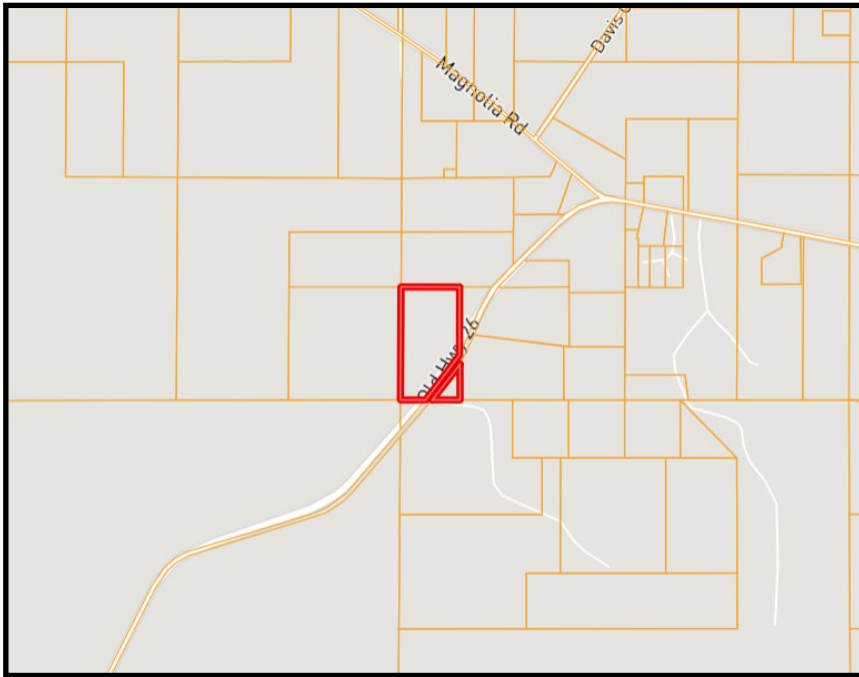


**BLAKE SASSER**, REALTOR®  
Blake@TomSmithLand.com  
601.990.5070 office | 601-757-5027 cell  
Licensed in MS and LA



# TomSmithLandandHomes.com

Information is believed to be accurate but not guaranteed.



Ownership  
Map

Topography  
Map

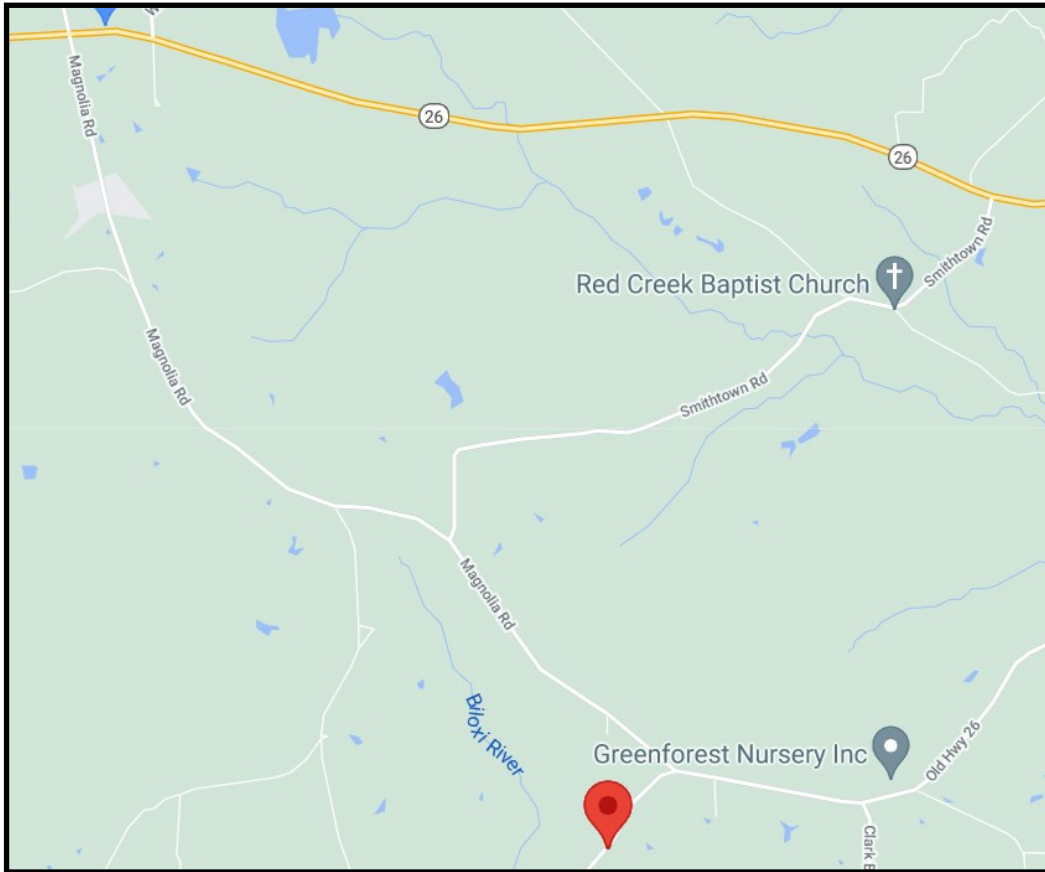


**BLAKE SASSER**, REALTOR®  
Blake@TomSmithLand.com  
601.990.5070 office | 601-757-5027 cell  
Licensed in MS and LA



**TomSmithLandandHomes.com**

Information is believed to be accurate but not guaranteed.



## Directional Map

Directions from Exit 29 on I-59S: Turn left onto MS-26 E and travel 9.6 miles to Magnolia Road. Turn right and travel 5.6 miles; make a sharp right turn onto Old Hwy 26. In approximately .5 miles, the property will be on your right.



*call me today!*

**BLAKE SASSER**, REALTOR®  
Blake@TomSmithLand.com  
601.990.5070 office | 601-757-5027 cell  
Licensed in MS and LA



**TomSmithLandandHomes.com**

Information is believed to be accurate but not guaranteed.