

# 115 +/- Acre Recreational tract

## Clarke County, MS



Are you looking for a recreational tract in Clarke County, MS? Come tour this 115+/- acre beautiful property featuring approximately one mile of frontage on the Chickasawhay River, mature hardwood timber up and down the banks of the river, and mature cedar trees throughout. The property also includes various stages of pine and natural regrowth along with approximately 10 acres of open area on the east side that can be converted to pastures or used as one of the many food plot locations. Multiple stand locations, a small pond, opportunities for food plots and camping areas along the river will catch your attention. An all-weather, paved road traverses the heart of this tracts and leads to an old metal bridge crossing the river. To schedule a private showing, call Brett Carney!

**Directions From the Intersection of HWY-45 and MS-145 in Shubuta, MS:** Travel northeast on MS-145 for 1.5 miles. Turn right on MS-510 and travel for 1 mile. The property will be on the left, marked with a sign.



*Call me today!*

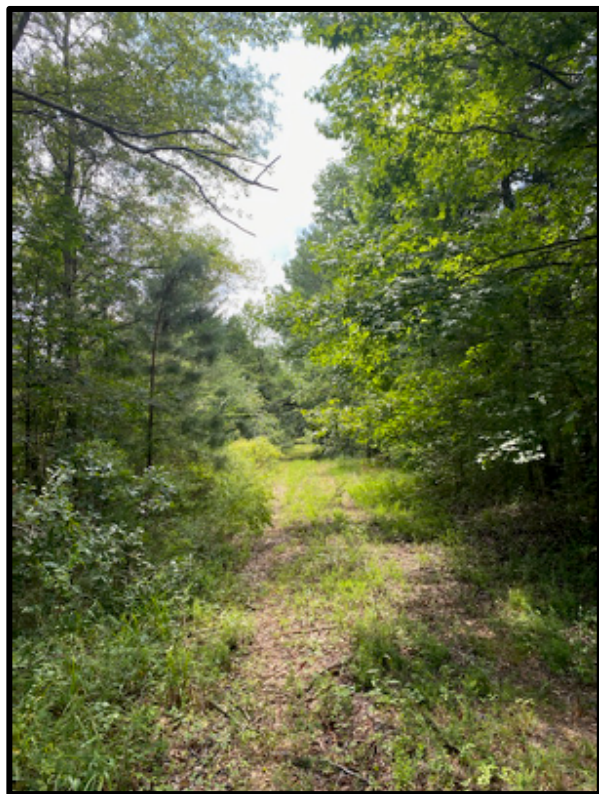
**BRETT CARNEY, REALTOR®**  
Brett@TomSmithLand.com  
662.268.6333 office | 601.710.9633 cell



**TomSmithLandandHomes.com**

Information is believed to be accurate but not guaranteed.





**BRETT CARNEY**, REALTOR®  
Brett@TomSmithLand.com  
662.268.6333 **office** | 601.710.9633 **cell**

**TomSmithLandandHomes.com**

Information is believed to be accurate but not guaranteed.







**BRETT CARNEY**, REALTOR®  
Brett@TomSmithLand.com  
662.268.6333 **office** | 601.710.9633 **cell**

**TomSmithLandandHomes.com**

Information is believed to be accurate but not guaranteed.







**BRETT CARNEY**, REALTOR®  
Brett@TomSmithLand.com  
662.268.6333 **office** | 601.710.9633 **cell**



**TomSmithLandandHomes.com**

Information is believed to be accurate but not guaranteed.





**BRETT CARNEY**, REALTOR®  
Brett@TomSmithLand.com  
662.268.6333 **office** | 601.710.9633 **cell**



**TomSmithLandandHomes.com**

Information is believed to be accurate but not guaranteed.





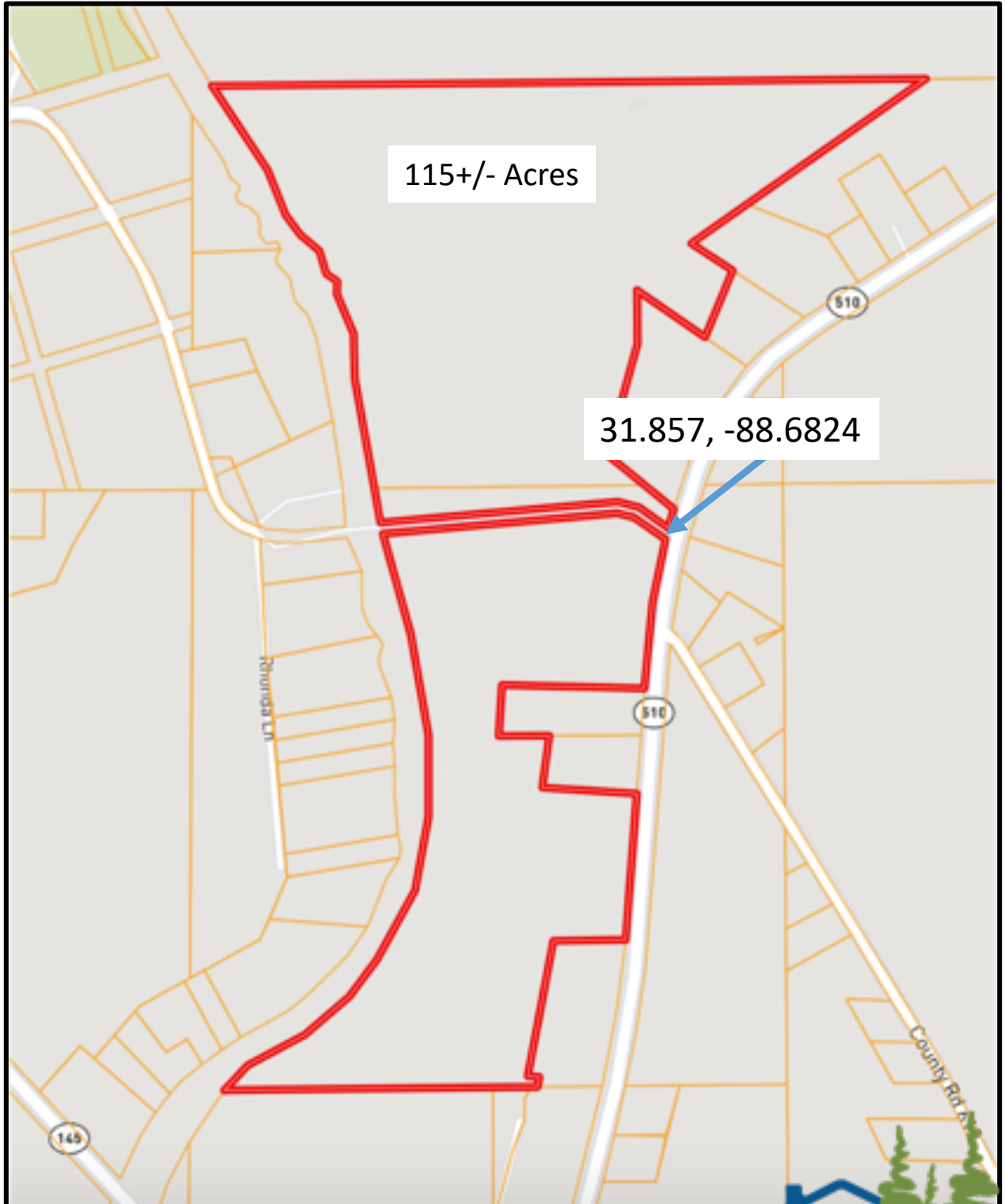
**BRETT CARNEY**, REALTOR®  
Brett@TomSmithLand.com  
662.268.6333 **office** | 601.710.9633 **cell**

**TomSmithLandandHomes.com**

Information is believed to be accurate but not guaranteed.



## Ownership Map



**BRETT CARNEY**, REALTOR®  
Brett@TomSmithLand.com  
662.268.6333 **office** | 601.710.9633 **cell**

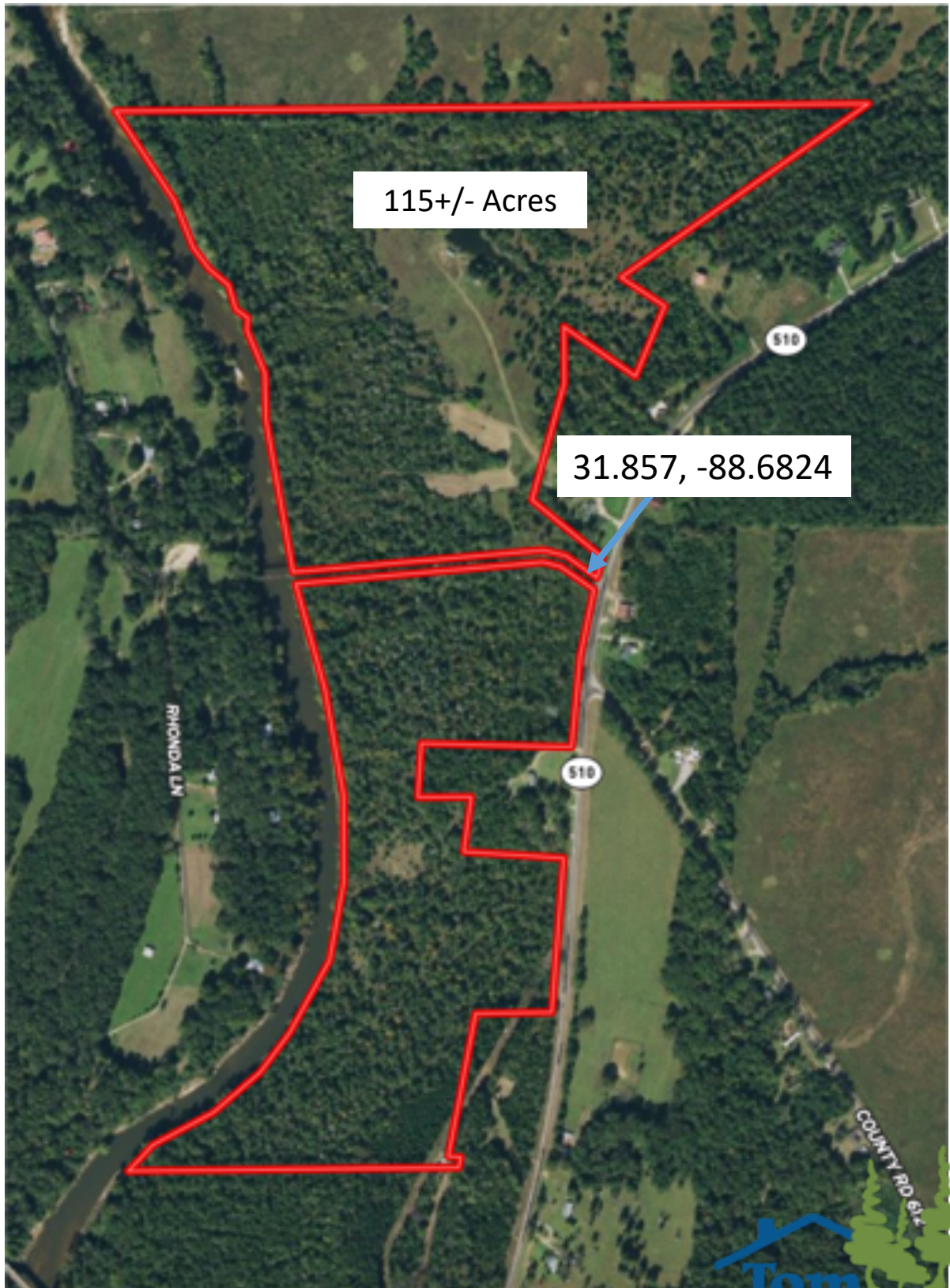
**TomSmithLandandHomes.com**

Information is believed to be accurate but not guaranteed.





## Aerial Photograph



115+/- Acres

31.857, -88.6824

RHONDA LN

COUNTY RD 614



**BRETT CARNEY**, REALTOR®

Brett@TomSmithLand.com

662.268.6333 **office** | 601.710.9633 **cell**

Expect More. Get More.

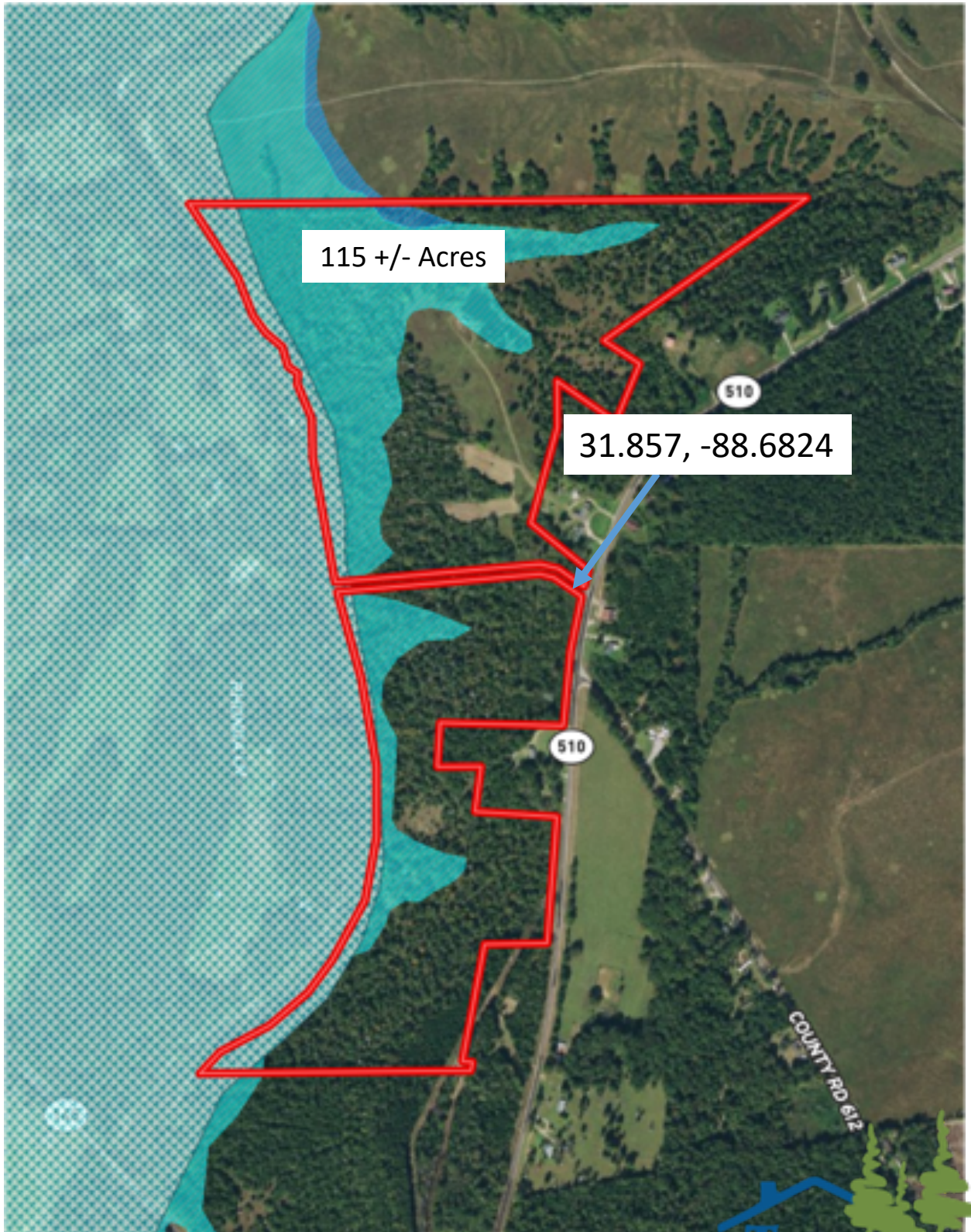
**TomSmithLandandHomes.com**

Information is believed to be accurate but not guaranteed.





## FEMA Flood Map



**BRETT CARNEY**, REALTOR®  
Brett@TomSmithLand.com  
662.268.6333 **office** | 601.710.9633 **cell**

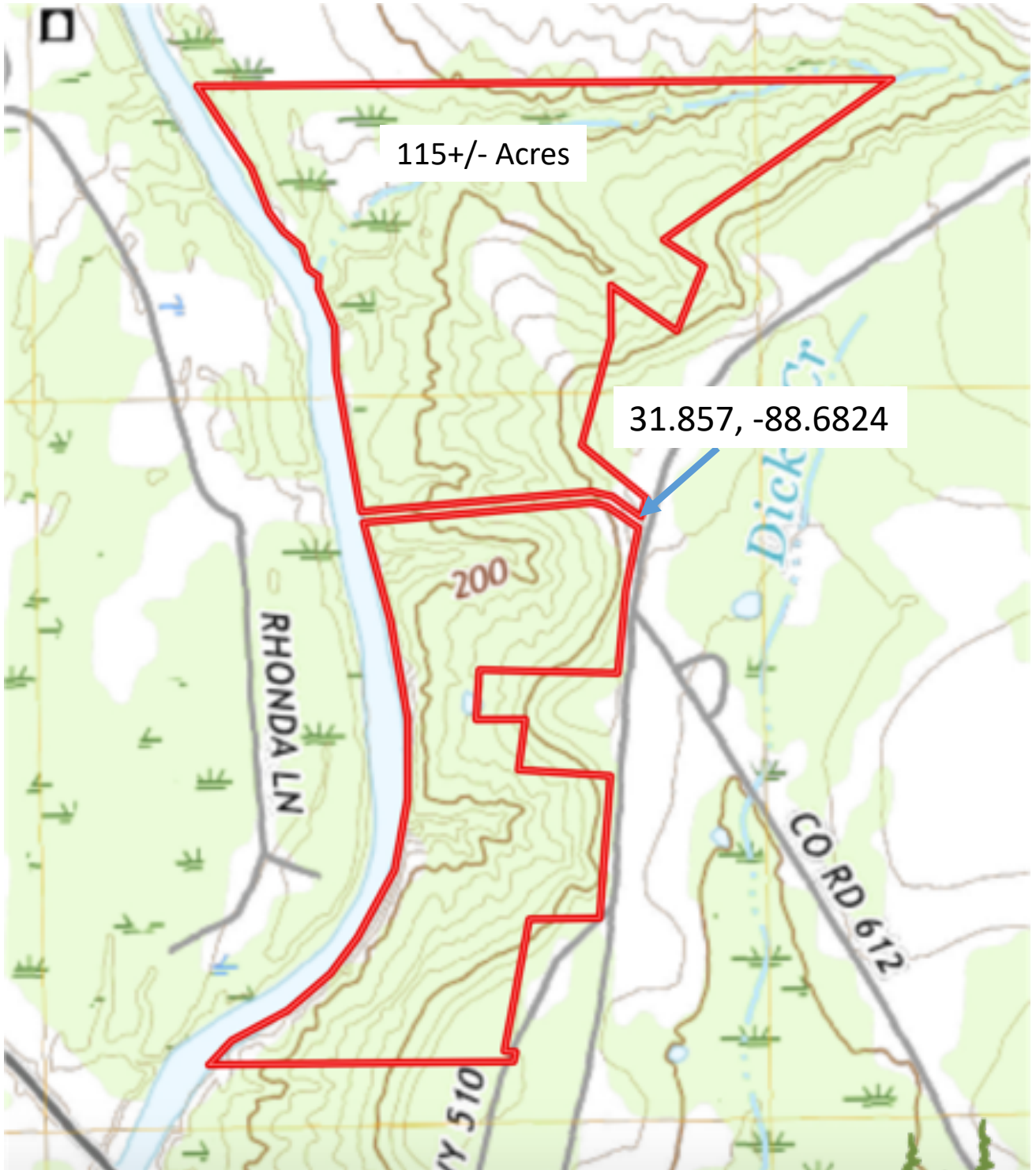
**TomSmithLandandHomes.com**

Information is believed to be accurate but not guaranteed.





## Topographic Map



**BRETT CARNEY**, REALTOR®  
Brett@TomSmithLand.com  
662.268.6333 office | 601.710.9633 cell

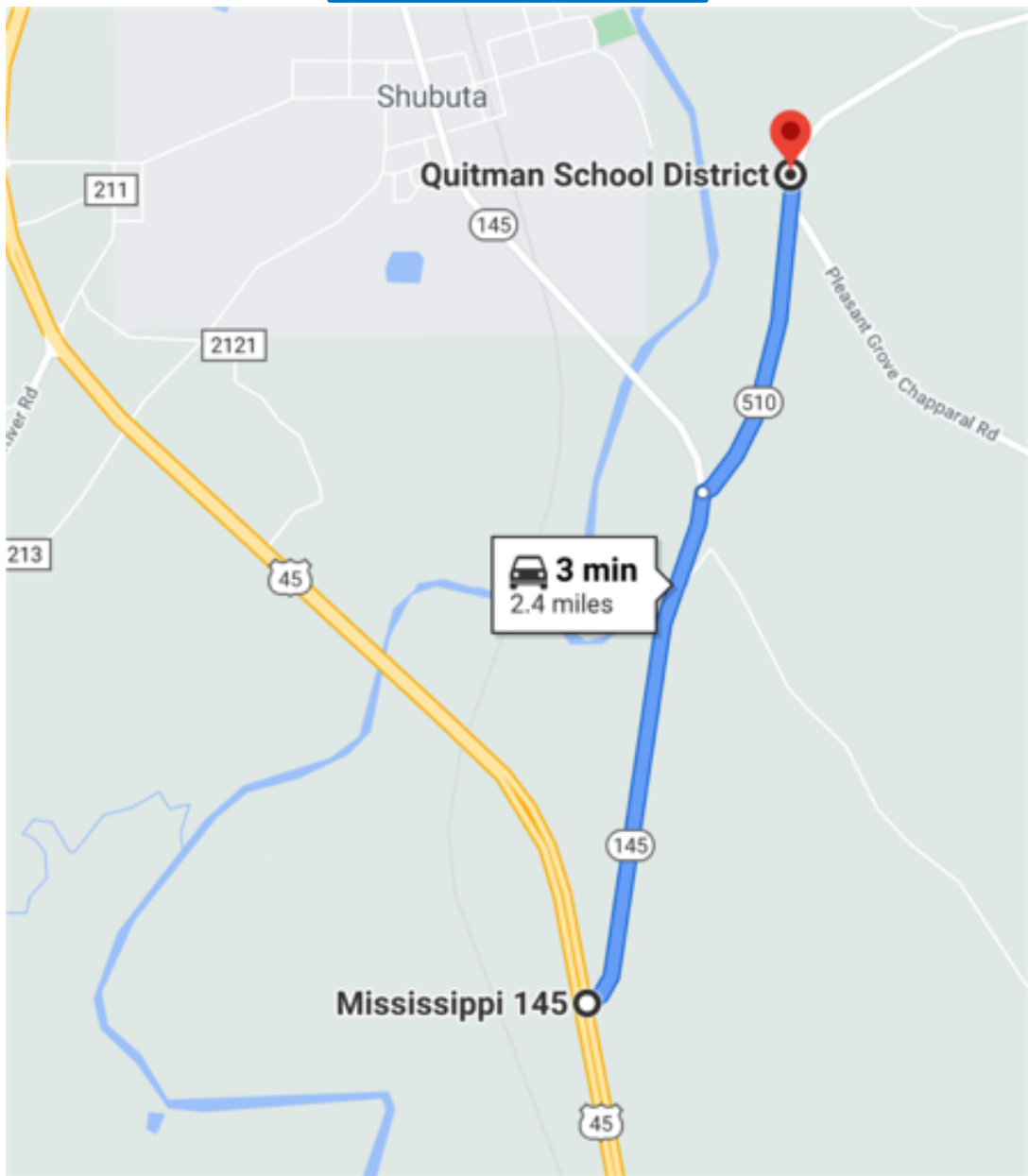
**TomSmithLandandHomes.com**

Information is believed to be accurate but not guaranteed.





## Directional Map



**Directions From the Intersection of HWY-45 and MS-145 in Shubuta, MS:**  
Travel northeast on MS-145 for 1.5 miles. Turn right on MS-510 and travel for 1 mile. The property will be on the left, marked with a sign.



**BRETT CARNEY, REALTOR®**  
Brett@TomSmithLand.com  
662.268.6333 **office** | 601.710.9633 **cell**

**TomSmithLandandHomes.com**

Information is believed to be accurate but not guaranteed.

