

Hunting & Recreational Tract

50 +/- Acres in Oktibbeha County, MS



\$280,000

Are you looking for a diverse land tract in Oktibbeha County, MS? This 50+/-acre hidden gem is in the Bradley community, on the corner of Hwy 12 and Smith Road, just before Sturgis. This property is home to many deer, turkeys, and other wildlife. Water and utilities are available nearby for this beautiful property to become your forever home site, hunting honey hole, or mini farm! Call Walker to schedule a private tour.

Directions from Hwy 12 in Starkville MS: Travel west on Hwy 12 for 10.2 miles. Turn right onto Smith Road; the property is on the corner of Hwy 12 and Smith Road.



Call me today!

WALKER TRANUM, REALTOR®
Walker@TomSmithHomes.com
662.268.6333 **office** | 662.769.1442 **cell**



TomSmithLandandHomes.com

Information is believed to be accurate but not guaranteed.



Call me today!

WALKER TRANUM, REALTOR®
 Walker@TomSmithHomes.com
 662.268.6333 office | 662.769.1442 cell



TomSmithLandandHomes.com

Information is believed to be accurate but not guaranteed.





Call me today!

WALKER TRANUM, REALTOR®
 Walker@TomSmithHomes.com
 662.268.6333 office | 662.769.1442 cell



TomSmithLandandHomes.com

Information is believed to be accurate but not guaranteed.

LandReport
 2011-2022
 AMERICA'S
BEST
 BROKERAGES



90°F 09/01/2020 12:14PM SUMMIT1

LandReport
2011-2022
AMERICA'S
BEST
BROKERAGES



Call me today!

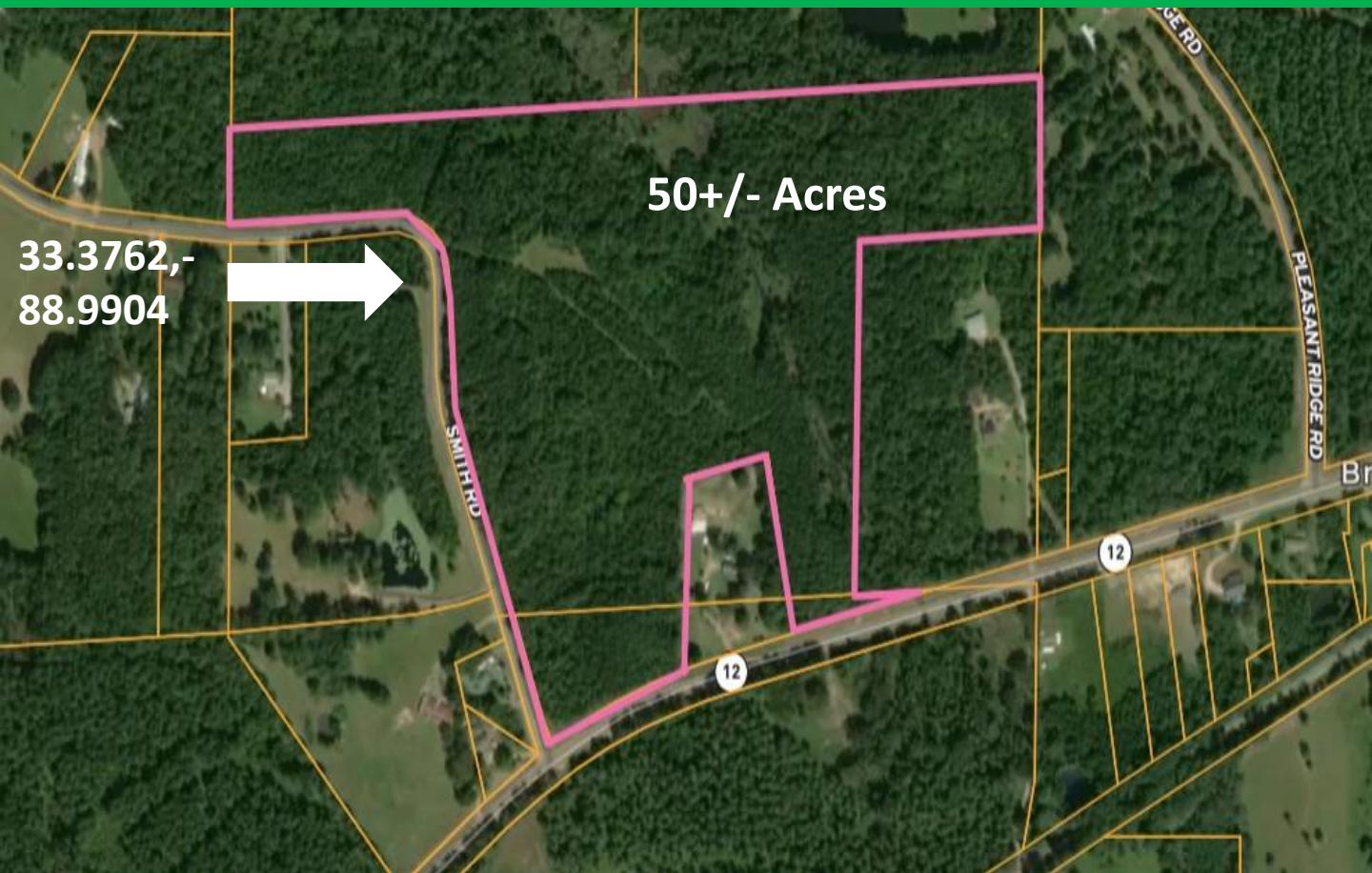
WALKER TRANUM, REALTOR®
Walker@TomSmithHomes.com
662.268.6333 office | 662.769.1442 cell



TomSmithLandandHomes.com

Information is believed to be accurate but not guaranteed.

Aerial Map



Call me today!

WALKER TRANUM, REALTOR®
Walker@TomSmithHomes.com
662.268.6333 **office** | 662.769.1442 **cell**



TomSmithLandandHomes.com

Information is believed to be accurate but not guaranteed.

Flood Map



Call me today!

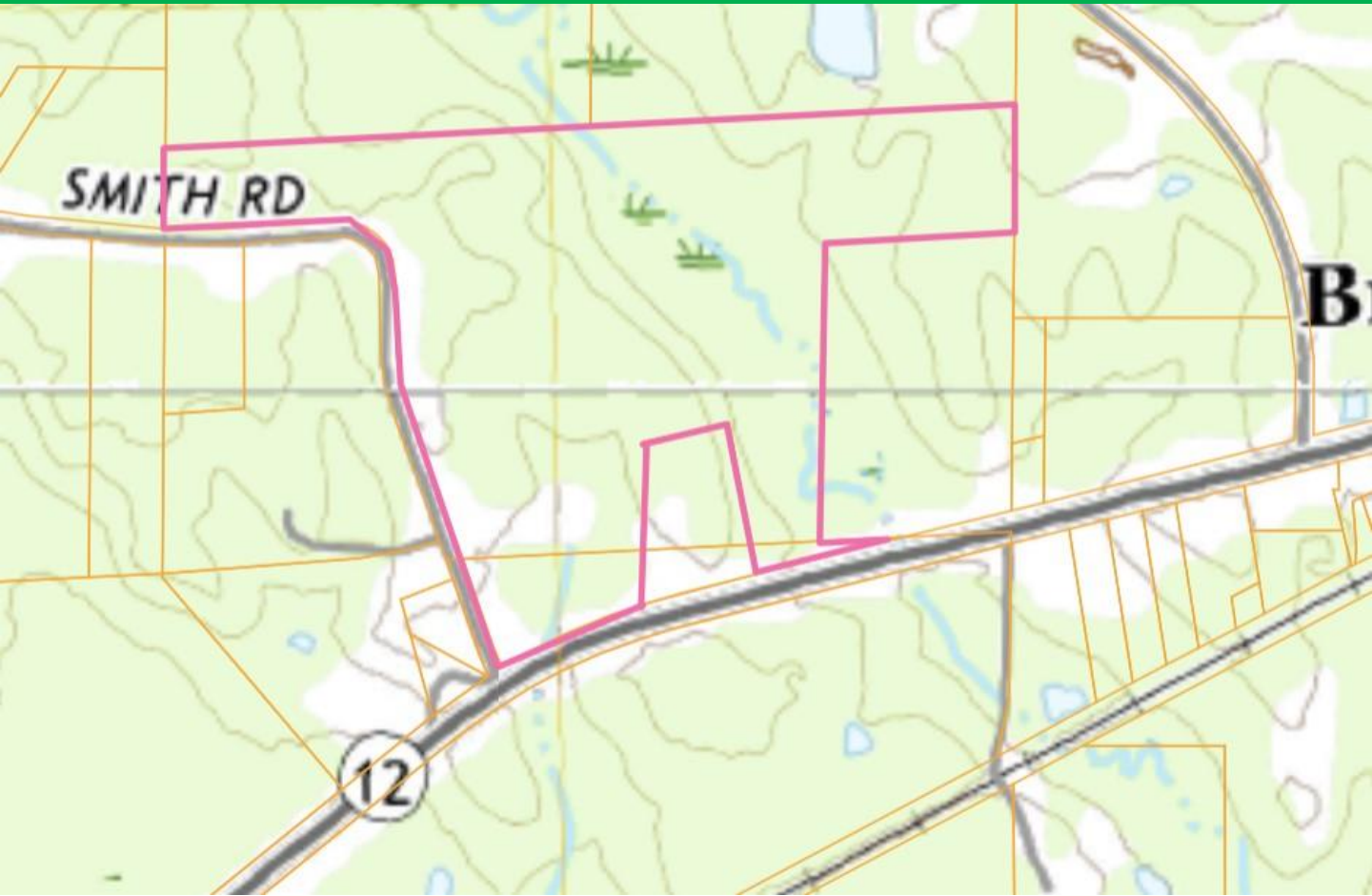
WALKER TRANUM, REALTOR®
Walker@TomSmithHomes.com
662.268.6333 office | 662.769.1442 cell



TomSmithLandandHomes.com

Information is believed to be accurate but not guaranteed.

Topography Map



Call me today!

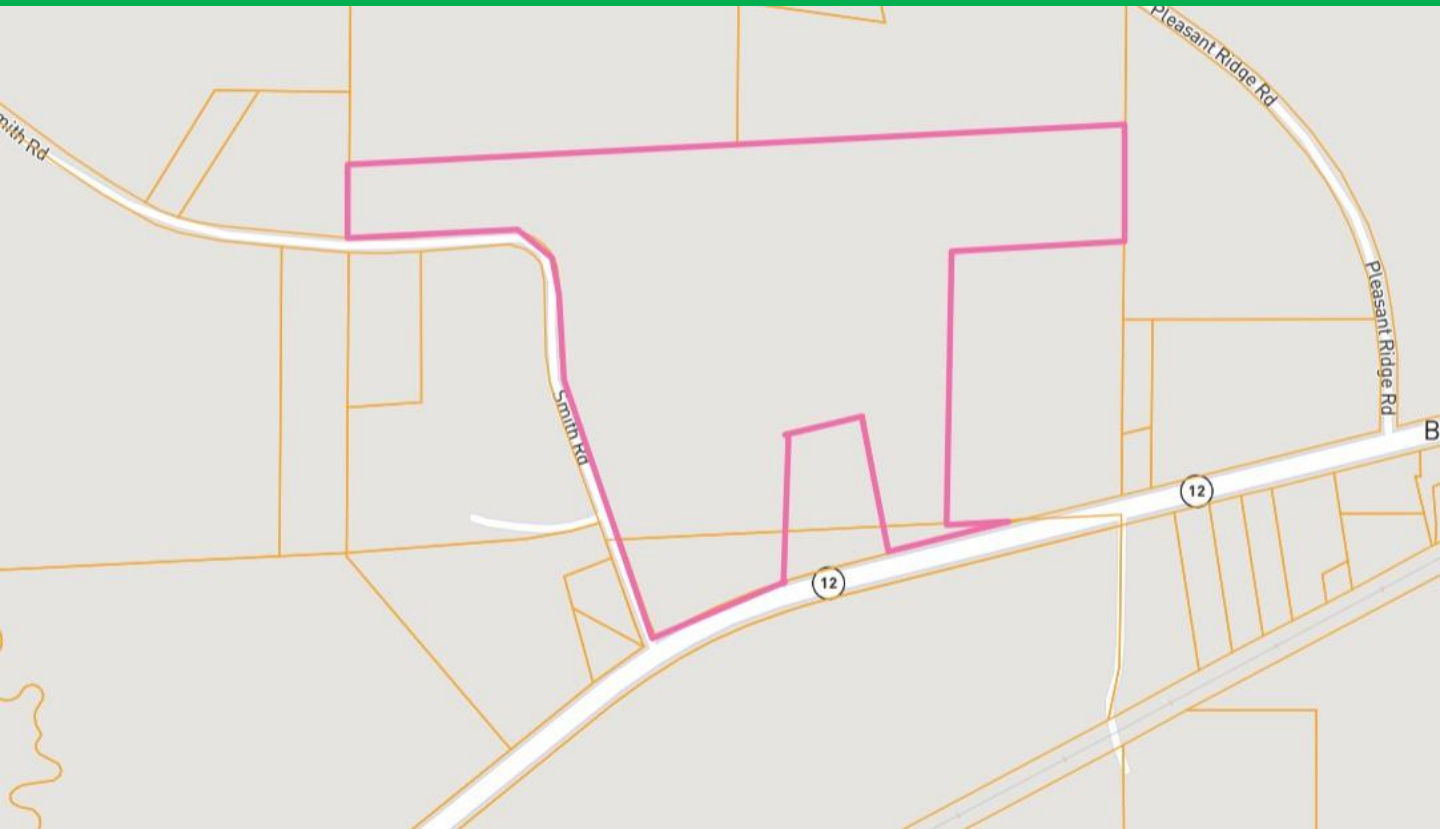
WALKER TRANUM, REALTOR®
Walker@TomSmithHomes.com
662.268.6333 office | 662.769.1442 cell



TomSmithLandandHomes.com

Information is believed to be accurate but not guaranteed.

Ownership Map



Call me today!

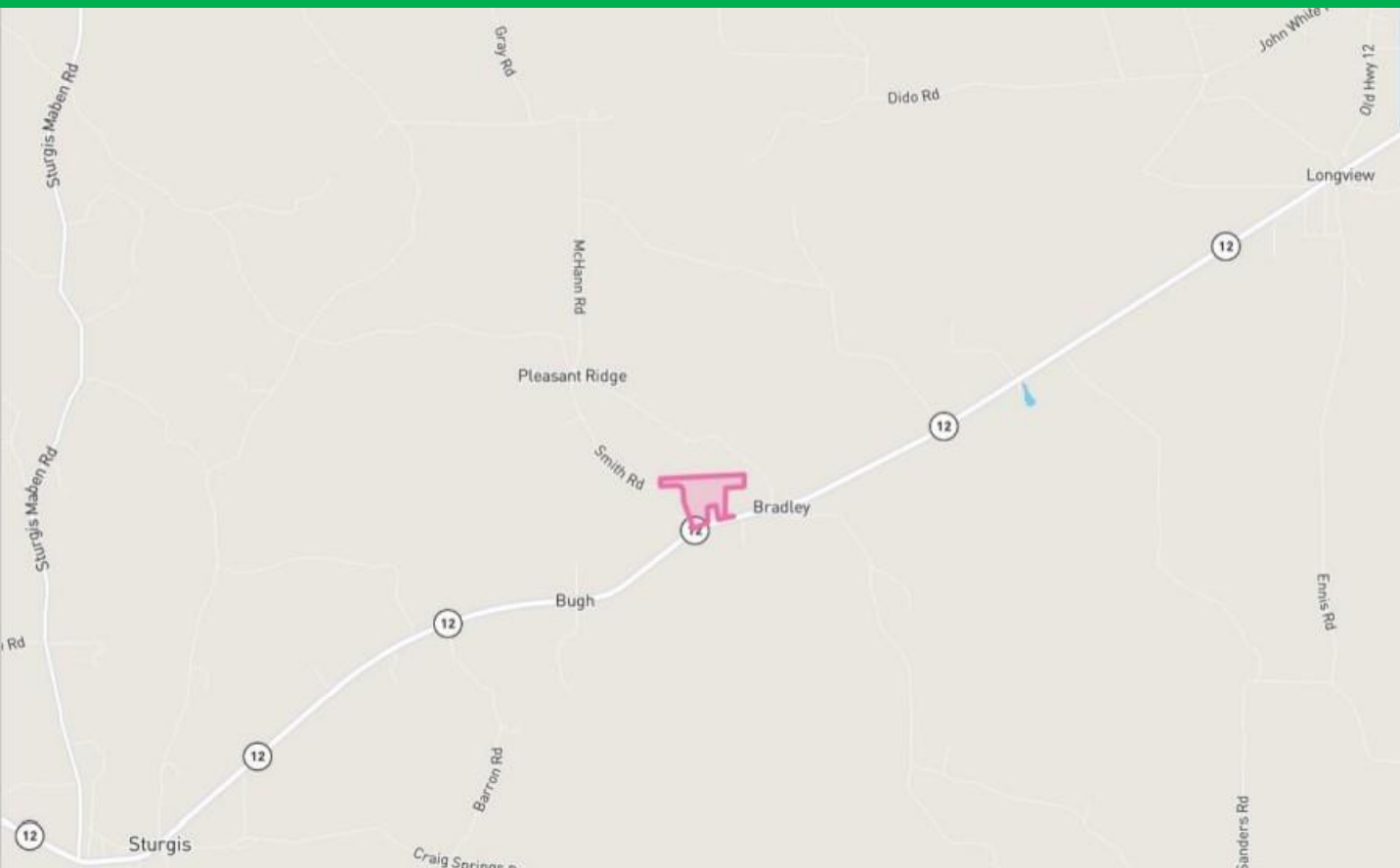
WALKER TRANUM, REALTOR®
Walker@TomSmithHomes.com
662.268.6333 office | 662.769.1442 cell



TomSmithLandandHomes.com

Information is believed to be accurate but not guaranteed.

Directional Map



Directions from Hwy 12 in Starkville MS: Travel west on Hwy 12 for 10.2 miles. Turn right onto Smith Road; the property is on the corner of Hwy 12 and Smith Road.



Call me today!

WALKER TRANUM, REALTOR®
Walker@TomSmithHomes.com
662.268.6333 **office** | 662.769.1442 **cell**



TomSmithLandandHomes.com

Information is believed to be accurate but not guaranteed.