

# HOME ON 7.5± ACRES IN LINCOLN COUNTY, MISSISSIPPI



**2553 Highway 583 Bogue Chitto, Mississippi 39629**

Are you in the market for a home with room to roam outdoors, in Lincoln County, MS? Come take a look at this three bedroom, two bath home, situated on 7.5+/- acres in Bogue Chitto. The spacious living room offers wood floors, and the kitchen has lots of storage and counter space. The split floor plan provides privacy with two bedrooms on one side and the primary bedroom on the other. Two of the bedrooms have original wood floors and multiple walk-in closets! The large back deck has composite decking which is sure to endure many family gatherings, grilling sessions, and coffee tastings! This property offers ample space for backyard fun with pets and children, as well as an outbuilding with electricity which sits on a concrete slab. This property is located in the Enterprise School District, approximately 5 minutes from Bogue Chitto and Hwy 51. Contact Trinity to schedule a showing today!

***Directions from Bogue Chitto, MS: Travel east on Bogue Chitto Rd. S for 4 miles, turn right onto Highway 583 S, in 1.6 miles the property will be on the left at 2553 Highway 583.***



*call me today!*

**TRINITY WEBB**, REALTOR®

Trinity@TomSmithHomes.com

601.990.5070 office | 769.218.7860 cell



Expect More. Get More.

**TomSmithLandandHomes.com**

Information is believed to be accurate but not guaranteed.



**TRINITY WEBB**, REALTOR®  
Trinity@TomSmithHomes.com  
601.990.5070 office | 769.218.7860 cell



**TomSmithLandandHomes.com**

Information is believed to be accurate but not guaranteed.



**TRINITY WEBB**, REALTOR®  
Trinity@TomSmithHomes.com  
601.990.5070 office | 769.218.7860 cell



**TomSmithLandandHomes.com**

Information is believed to be accurate but not guaranteed.



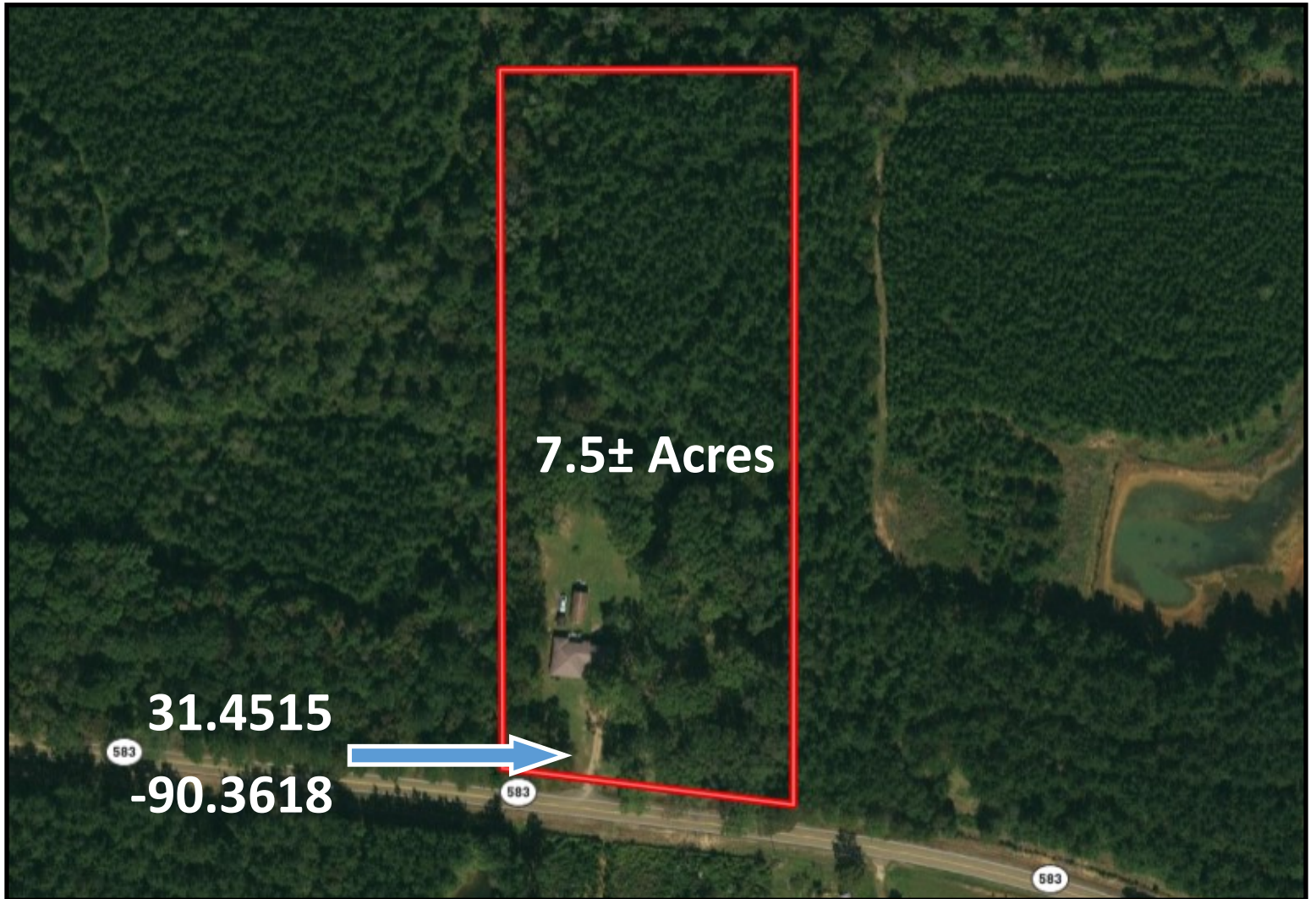
**TRINITY WEBB**, REALTOR®  
Trinity@TomSmithHomes.com  
601.990.5070 office | 769.218.7860 cell



**TomSmithLandandHomes.com**

Information is believed to be accurate but not guaranteed.

# AERIAL MAP



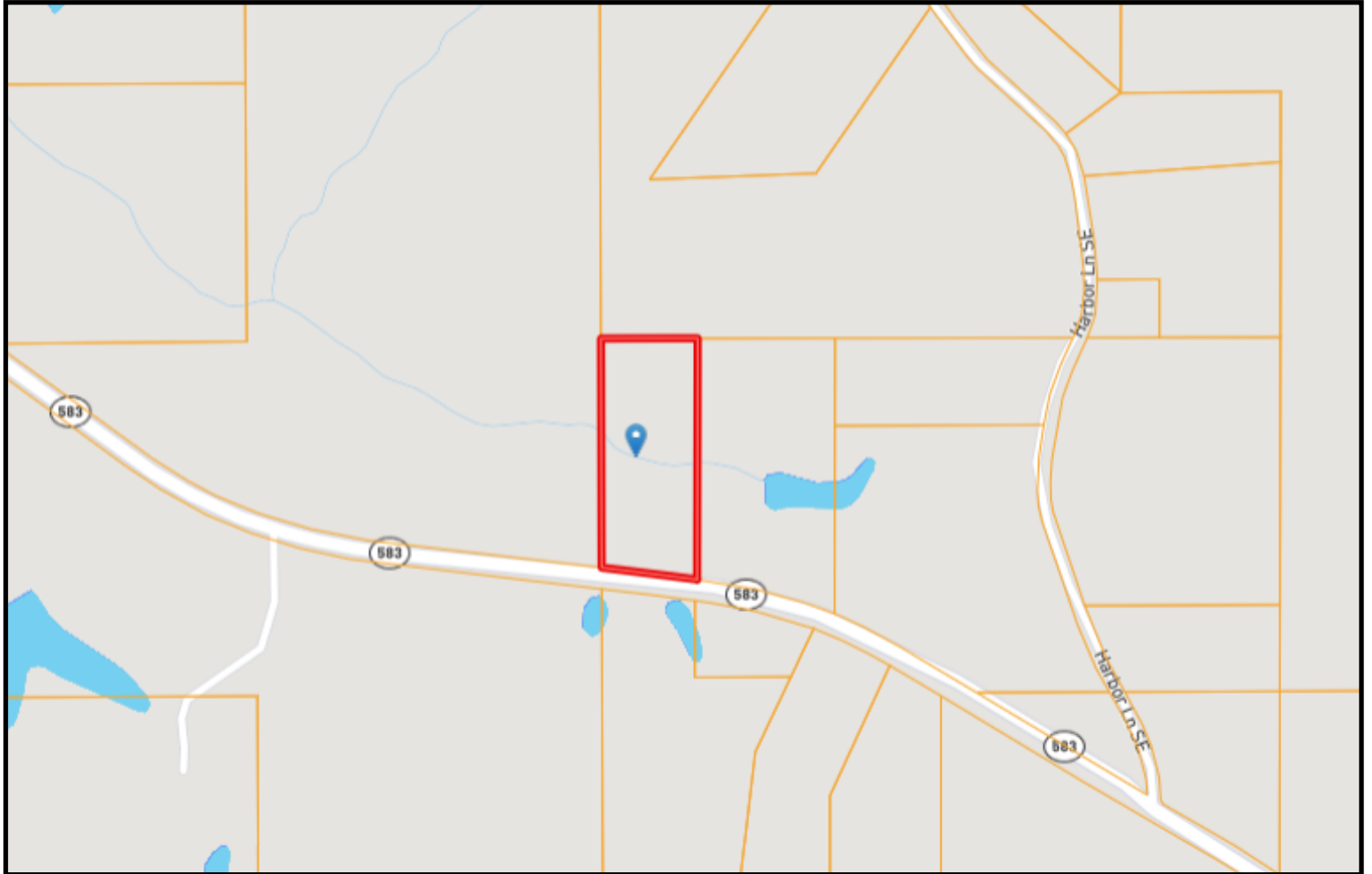
**TRINITY WEBB**, REALTOR®  
Trinity@TomSmithHomes.com  
601.990.5070 office | 769.218.7860 cell



[TomSmithLandandHomes.com](http://TomSmithLandandHomes.com)

Information is believed to be accurate but not guaranteed.

# OWNERSHIP MAP



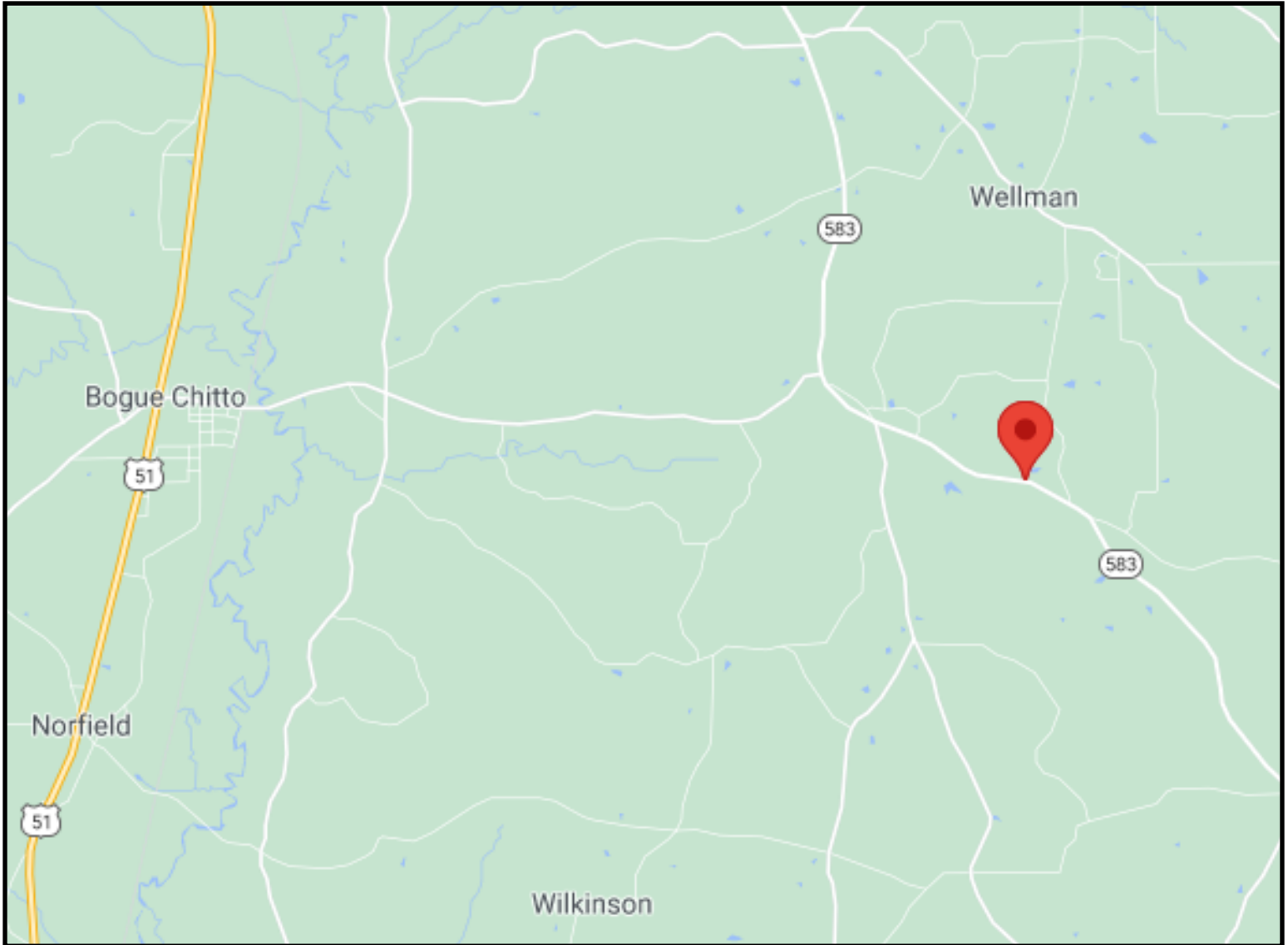
**TRINITY WEBB**, REALTOR®  
Trinity@TomSmithHomes.com  
601.990.5070 office | 769.218.7860 cell



[TomSmithLandandHomes.com](http://TomSmithLandandHomes.com)

Information is believed to be accurate but not guaranteed.

# DIRECTIONAL MAP



***Directions from Bogue Chitto, MS: Travel east on Bogue Chitto Rd. S for 4 miles, turn right onto Highway 583 S, in 1.6 miles the property will be on the left at 2553 Highway 583.***



**TRINITY WEBB**, REALTOR®  
Trinity@TomSmithHomes.com  
601.990.5070 office | 769.218.7860 cell



**TomSmithLandandHomes.com**

Information is believed to be accurate but not guaranteed.