



.67+/- Acre Residential Corner Lot Pike County, MS



8083 Magnolia Holmesville Rd
McComb, MS 39648



This 0.67+/- acre Pike County, MS residential property is located on the corner of Walker Road and Magnolia Holmesville Road in McComb. Electricity, water and septic are available on site. Currently, a mobile home is on the property but it is not included in the sale. This property is in South Pike School District and just minutes from Interstate 55, and the amenities of McComb and Magnolia. Properties like this are a rare find, call Nicole or Trinity today to schedule a viewing!

Directions from I-55 South in McComb, MS: Take exit 15 and turn left onto US- 98 towards Tylertown. Drive 10 miles and turn right onto Magnolia Holmesville Road. The destination is on your right in 0.5 miles.



NICOLE NEWELL, REALTOR®
Nicole@TomSmithHomes.com
601.990.5070 office | 601.754.3766 cell



Expect More. Get More.

Call us today!



TRINITY WEBB, REALTOR®
Trinity@TomSmithHomes.com
601.990.5070 office | 769.218.7860 cell

TomSmithLandandHomes.com

Information is believed to be accurate but not guaranteed.





Aerial Map



NICOLE NEWELL, REALTOR®
 Nicole@TomSmithHomes.com
 601.990.5070 office | 601.754.3766 cell



Call us today!

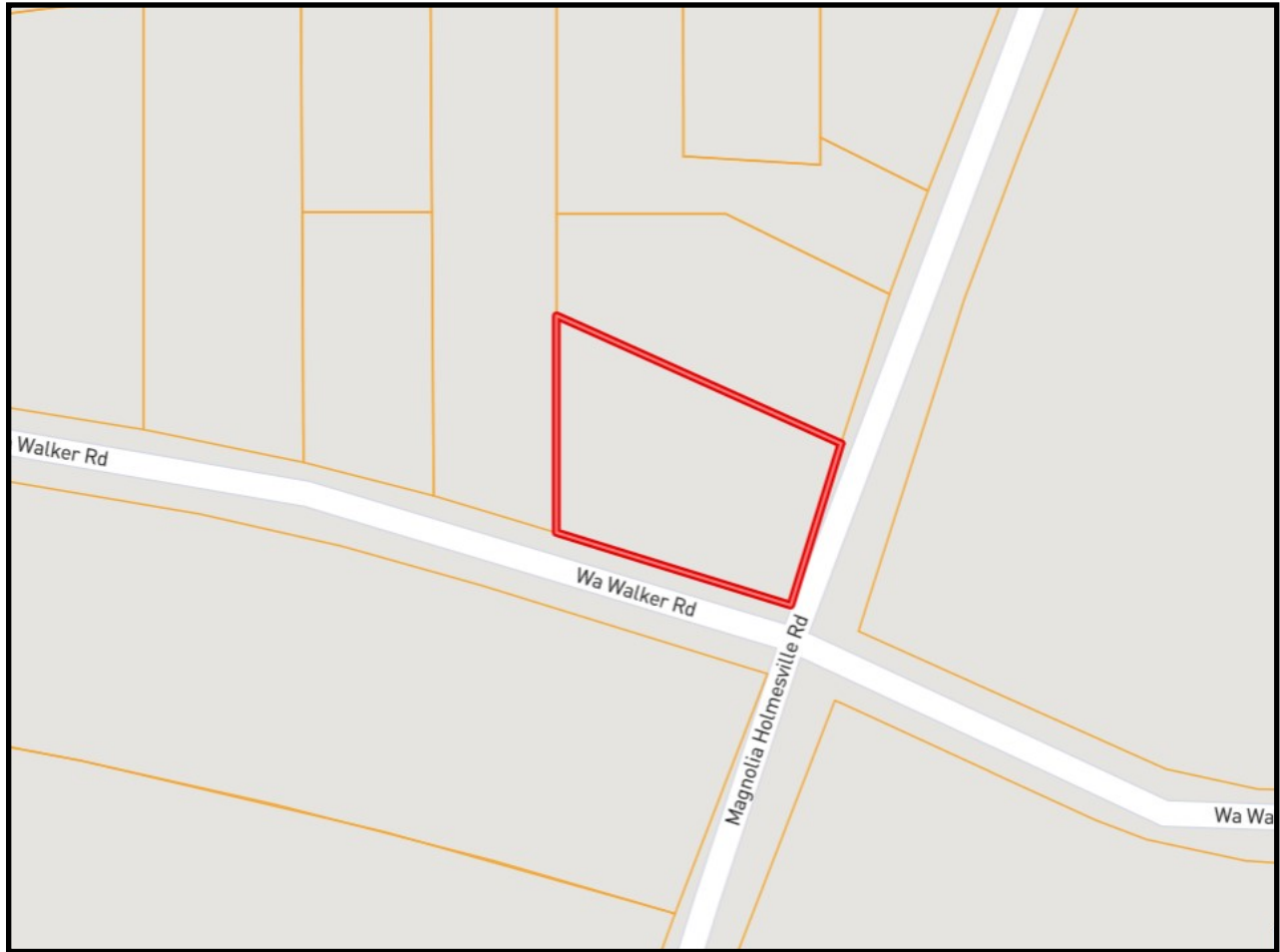


TRINITY WEBB, REALTOR®
 Trinity@TomSmithHomes.com
 601.990.5070 office | 769.218.7860 cell

TomSmithLandandHomes.com

Information is believed to be accurate but not guaranteed.





Ownership Map



NICOLE NEWELL, REALTOR®
 Nicole@TomSmithHomes.com
 601.990.5070 office | 601.754.3766 cell



Expect More. Get More.

Call us today!

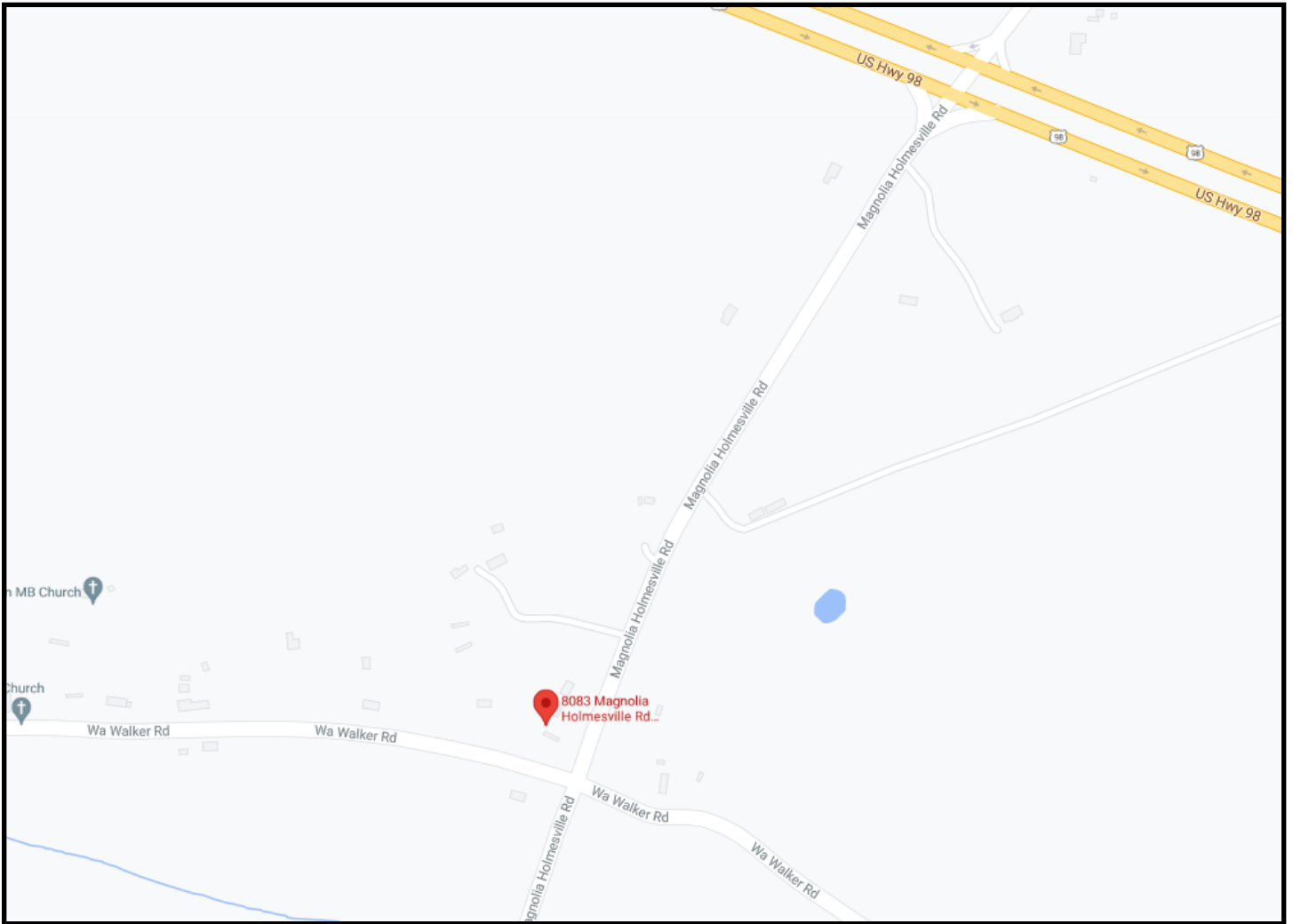


TRINITY WEBB, REALTOR®
 Trinity@TomSmithHomes.com
 601.990.5070 office | 769.218.7860 cell

TomSmithLandandHomes.com

Information is believed to be accurate but not guaranteed.





Directional Map

8083 Magnolia Holmesville Road McComb, MS 39648



Directions from I-55 South in McComb, MS: Take exit 15 and turn left onto US- 98 towards Tylertown. Drive 10 miles and turn right onto Magnolia Holmesville Road. The destination is on your right in 0.5 miles.



NICOLE NEWELL, REALTOR®
Nicole@TomSmithHomes.com
601.990.5070 office | 601.754.3766 cell



Expect More. Get More.

Call us today!



TRINITY WEBB, REALTOR®
Trinity@TomSmithHomes.com
601.990.5070 office | 769.218.7860 cell

TomSmithLandandHomes.com

Information is believed to be accurate but not guaranteed.

