



2.3+/- Acre Home Site Covich County, MS



\$28,000

This Covich County, MS property is conveniently located directly off of Interstate 55 at the Martinsville exit in Hazlehurst. This 2.3+/- acre tract has beautiful hardwoods and a perfect hilltop for a home. You can quickly jump on the interstate and be in Jackson in 30 minutes, Brookhaven in 20 minutes and take your boat to Lake Lincoln in 15 minutes. While this property would be a nice home spot, it could get zoned commercial with some effort. The property can be seen from the interstate and is situated on the corner of the on ramp to I-55. While you are planning your dream house or business, someone else is calling for a showing. Call Nicole today!

Directions from I55 N in Brookhaven, MS: Take exit 56 and stay right. The property will be the first drive on your left.



Call me today!

NICOLE NEWELL, REALTOR®
Nicole@TomSmithHomes.com
601.990.5070 office | 601.754.3766 cell



Expect More. Get More.

TomSmithLandandHomes.com

Information is believed to be accurate but not guaranteed.



Aerial Map



Call me today!

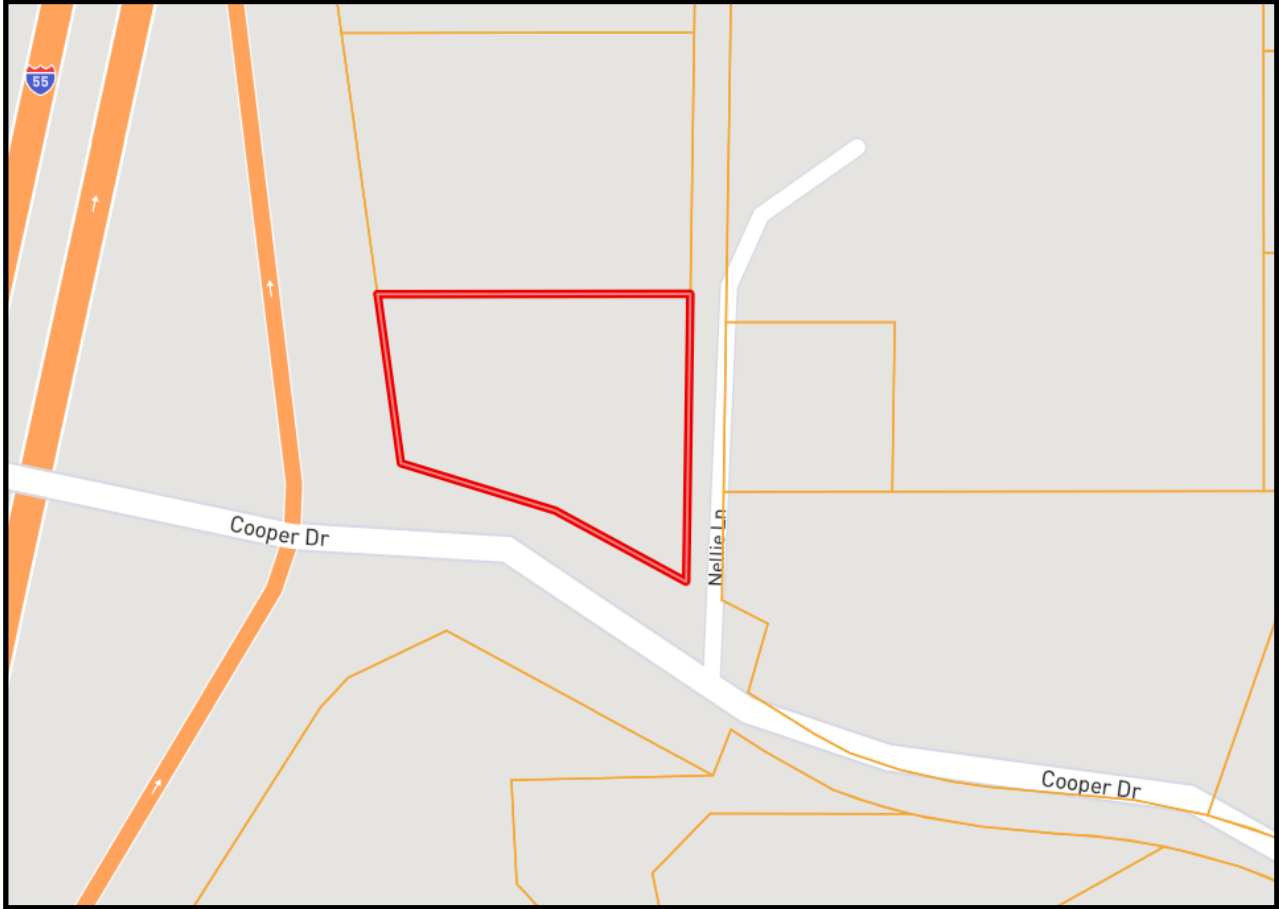
NICOLE NEWELL, REALTOR®
Nicole@TomSmithHomes.com
601.990.5070 office | 601.754.3766 cell



Expect More. Get More.

TomSmithLandandHomes.com

Information is believed to be accurate but not guaranteed.



Ownership Map



2010-2021
AMERICA'S
BEST
BROKERAGES

Call me today!

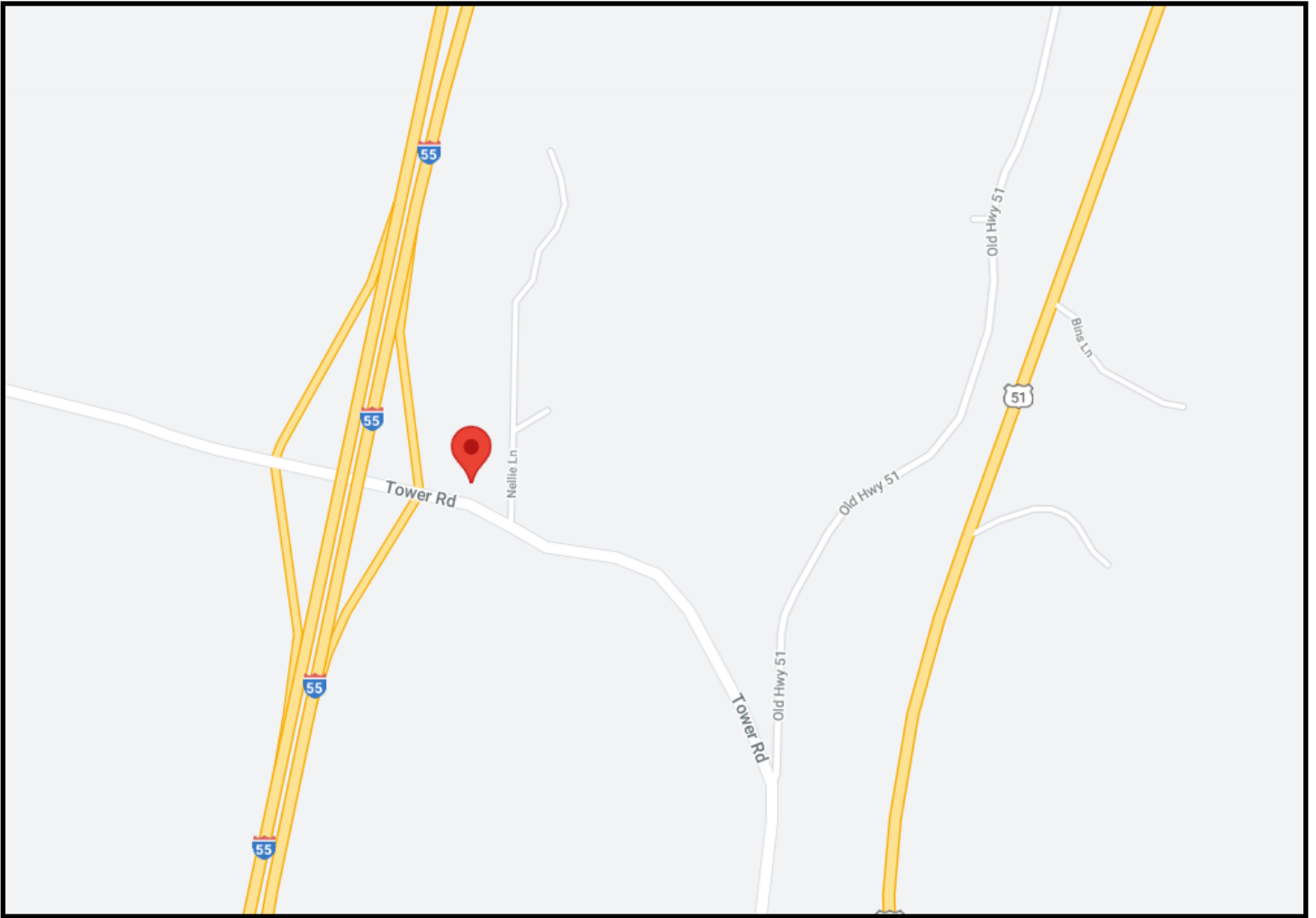
NICOLE NEWELL, REALTOR®
Nicole@TomSmithHomes.com
601.990.5070 office | 601.754.3766 cell



Expect More. Get More.

TomSmithLandandHomes.com

Information is believed to be accurate but not guaranteed.



Directional Map

Directions from I55 N in Brookhaven, MS: Take exit 56 and stay right. The property will be the first drive on your left.



Call me today!

NICOLE NEWELL, REALTOR®
Nicole@TomSmithHomes.com
601.990.5070 office | 601.754.3766 cell



Expect More. Get More.

TomSmithLandandHomes.com

Information is believed to be accurate but not guaranteed.