

Hunting and Recreational Tract

172 +/- Acres in Oktibbeha County, MS



\$1,032,000

Looking for a large, ready-to-hunt property convenient to town? This gated 172+/- acre pine plantation tract is situated in Oktibbeha County, MS approximately three miles from Starkville city limits. The property features 2,000 feet of road frontage on Hwy 12, a huge powerline running through the front portion and an established main road traverses the center. This property has so much potential for hunting, development, or building. Contact Walker to schedule a private showing!

Directions from Starkville, HWY 12: Travel west on Hwy 12 for 2.95 miles. The property will be on your left.



Call me today!

WALKER TRANUM, REALTOR®
Walker@TomSmithLand.com
662.268.6333 office | 662.769.1442 cell



TomSmithLandandHomes.com

Information is believed to be accurate but not guaranteed.



Call me today!

WALKER TRANUM, REALTOR®

Walker@TomSmithLand.com

662.268.6333 office | 662.769.1442 cell



Expect More. Get More.

TomSmithLandandHomes.com

Information is believed to be accurate but not guaranteed.





Call me today!

WALKER TRANUM, REALTOR®

Walker@TomSmithLand.com

662.268.6333 office | 662.769.1442 cell



Expect More. Get More.

TomSmithLandandHomes.com

Information is believed to be accurate but not guaranteed.





Call me today!

WALKER TRANUM, REALTOR®

Walker@TomSmithLand.com

662.268.6333 office | 662.769.1442 cell



Expect More. Get More.

TomSmithLandandHomes.com

Information is believed to be accurate but not guaranteed.

LandReport
2011-2020
AMERICA'S
BEST
BROKERAGES



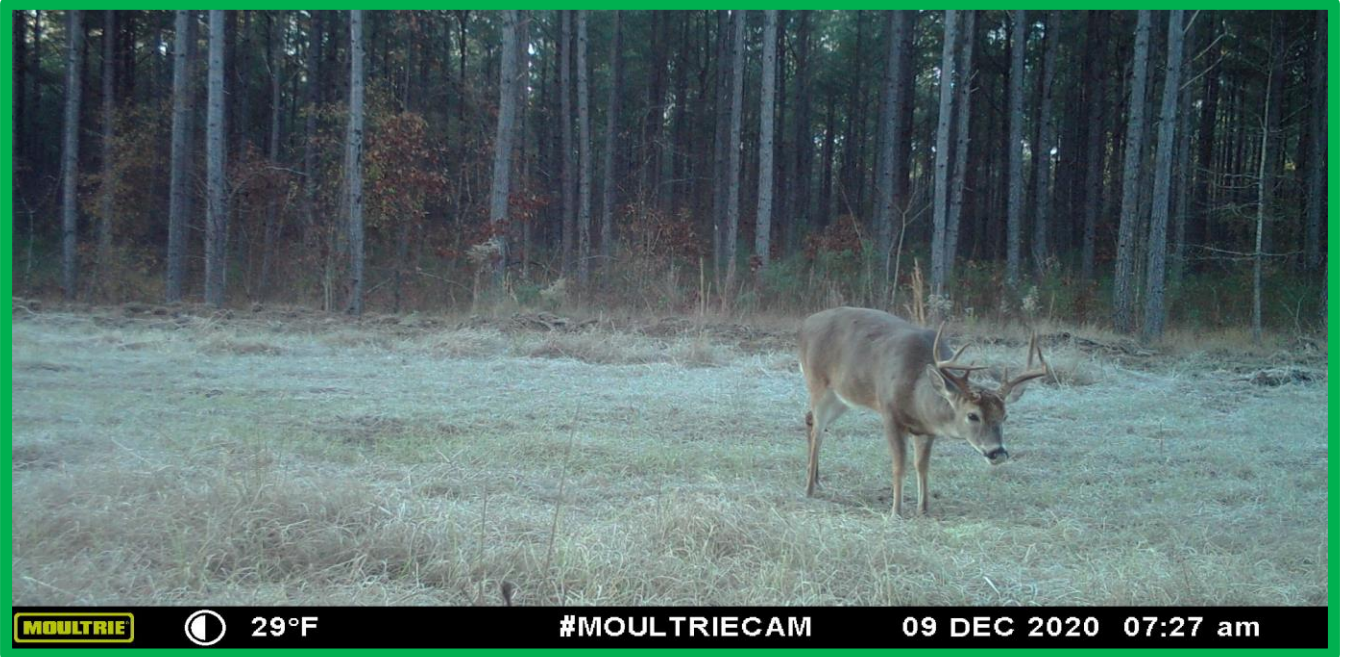
Call me today!

WALKER TRANUM, REALTOR®
Walker@TomSmithLand.com
662.268.6333 office | 662.769.1442 cell



TomSmithLandandHomes.com

Information is believed to be accurate but not guaranteed.



MOULTRIE

29°F

#MOULTRIECAM

09 DEC 2020 07:27 am



Call me today!

WALKER TRANUM, REALTOR®

Walker@TomSmithLand.com

662.268.6333 office | 662.769.1442 cell



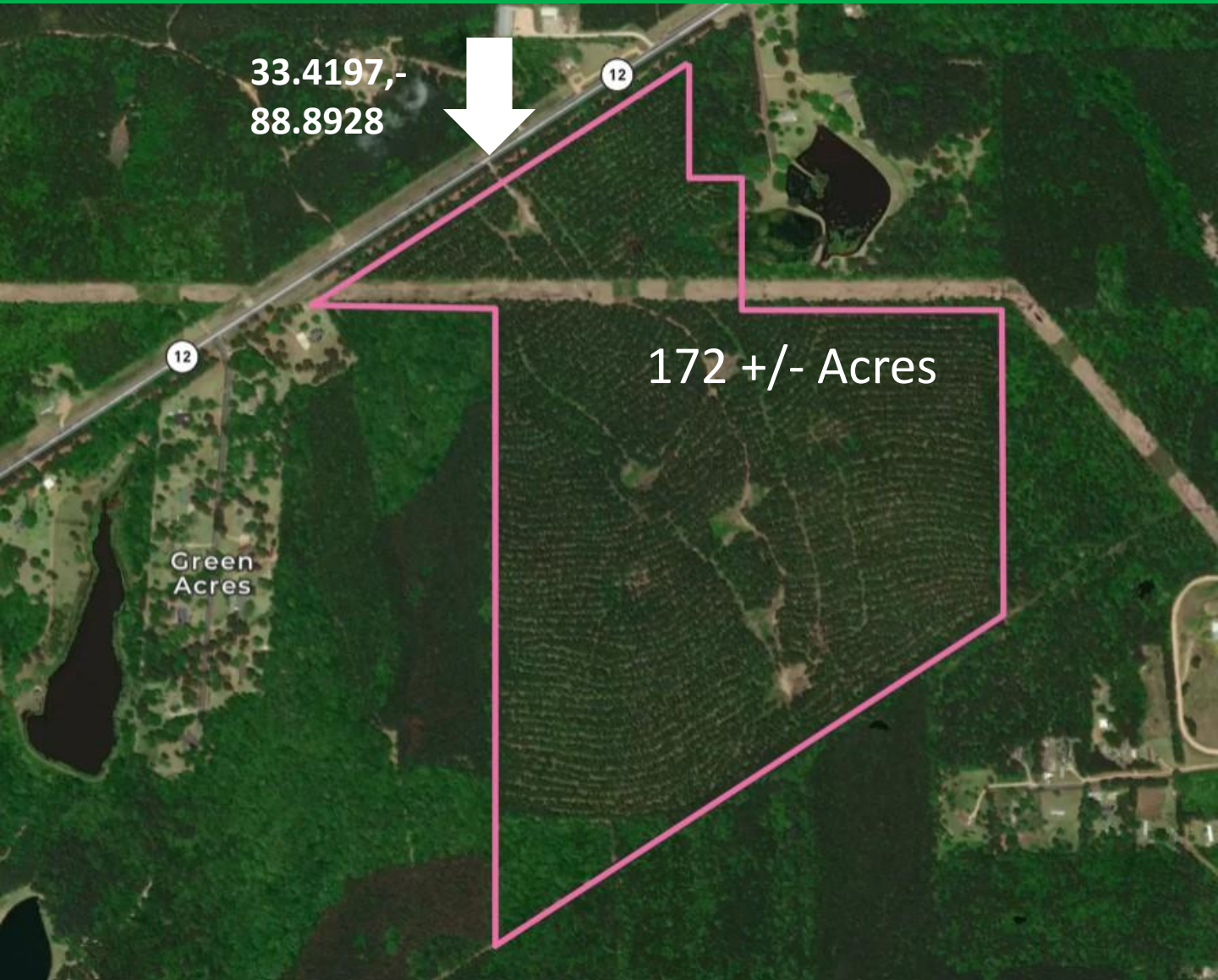
Expect More. Get More.

TomSmithLandandHomes.com

Information is believed to be accurate but not guaranteed.

LandReport
2011-2020
AMERICA'S
BEST
BROKERAGES

Aerial Map



Call me today!

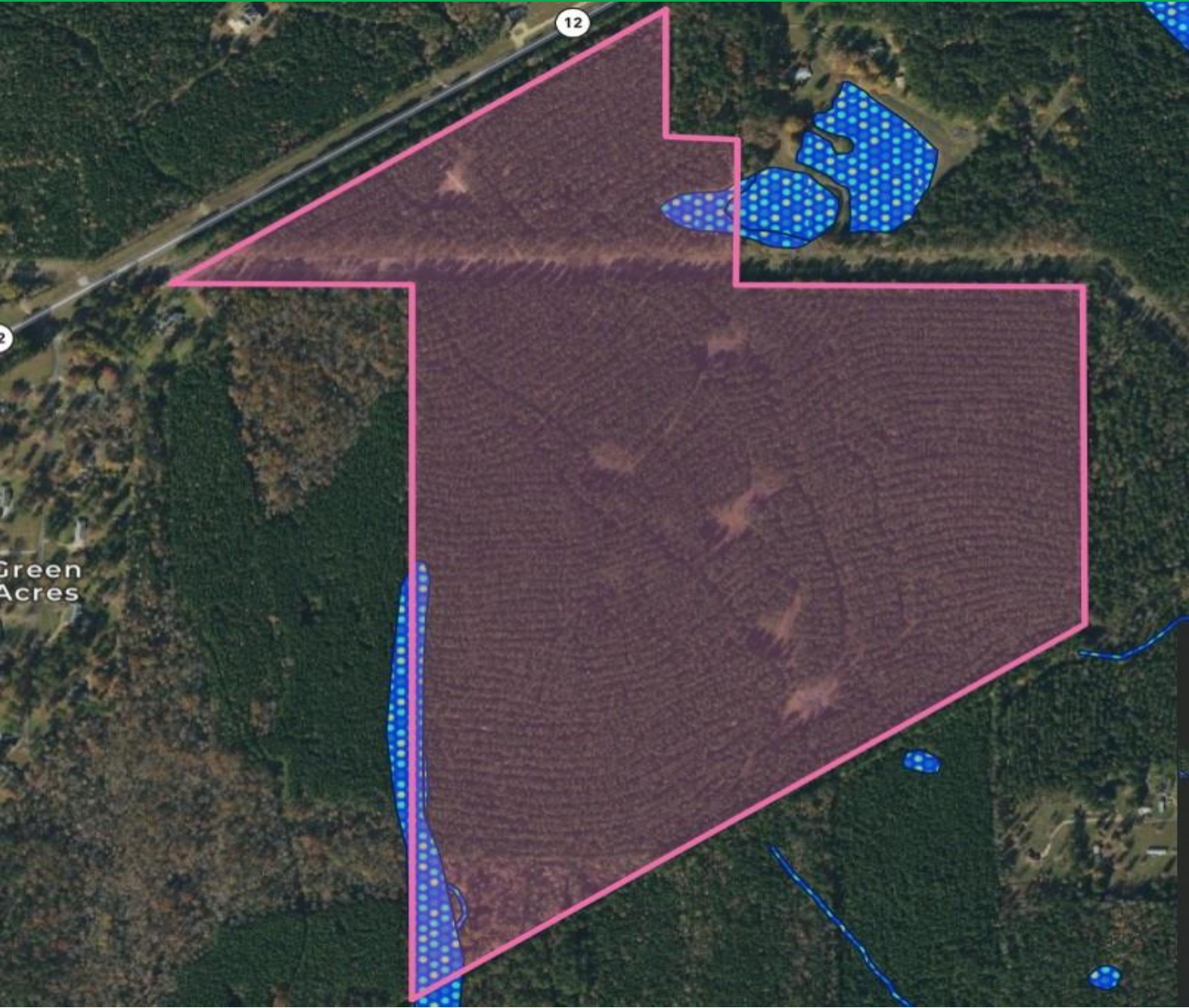
WALKER TRANUM, REALTOR®
Walker@TomSmithLand.com
662.268.6333 office | 662.769.1442 cell



TomSmithLandandHomes.com

Information is believed to be accurate but not guaranteed.

Flood Map



Call me today!

WALKER TRANUM, REALTOR®

Walker@TomSmithLand.com

662.268.6333 office | 662.769.1442 cell

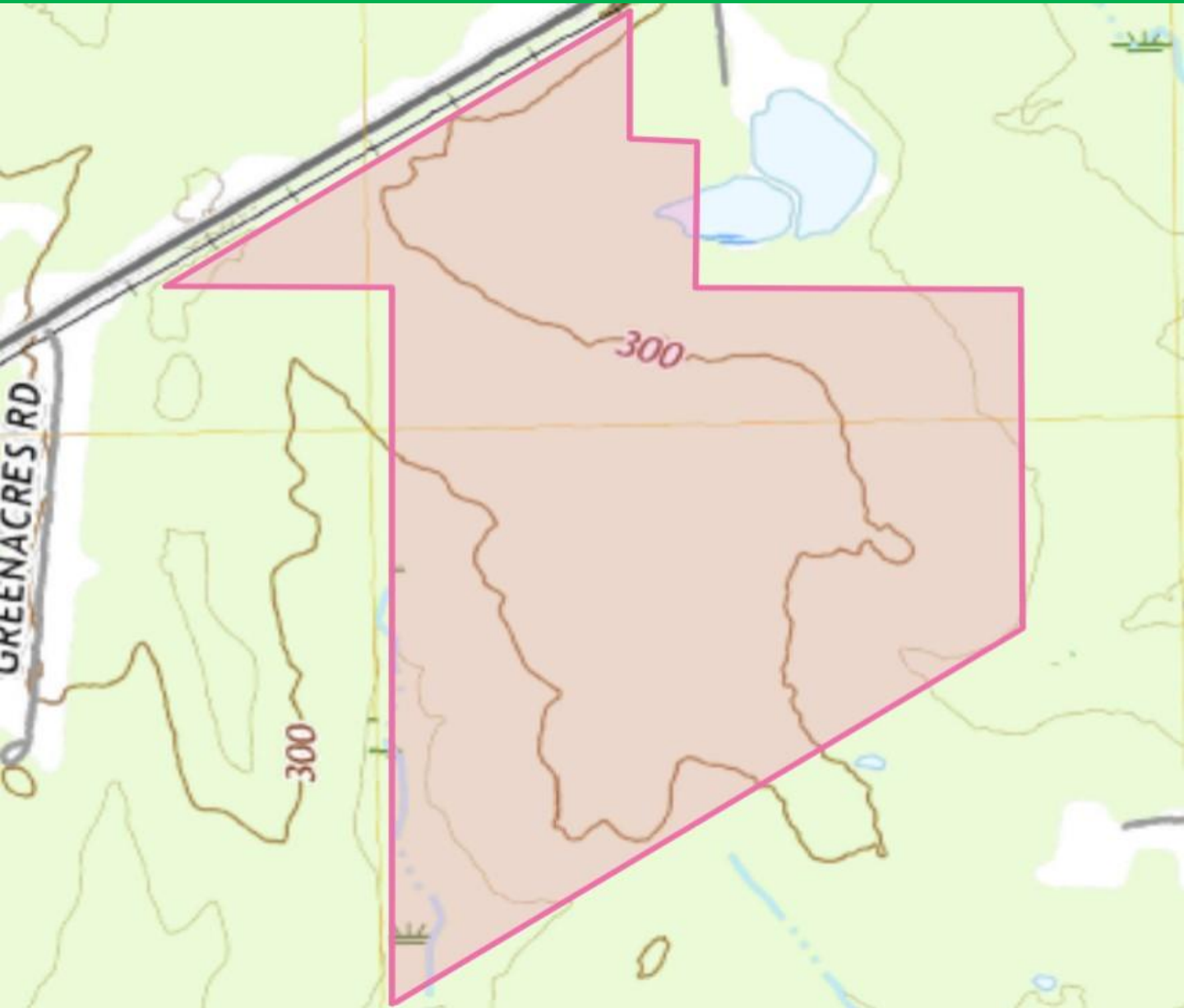


TomSmithLandandHomes.com

Information is believed to be accurate but not guaranteed.

LandReport
2011-2020
AMERICA'S
BEST
BROKERAGES

Topography Map



Call me today!

WALKER TRANUM, REALTOR®

Walker@TomSmithLand.com

662.268.6333 office | 662.769.1442 cell

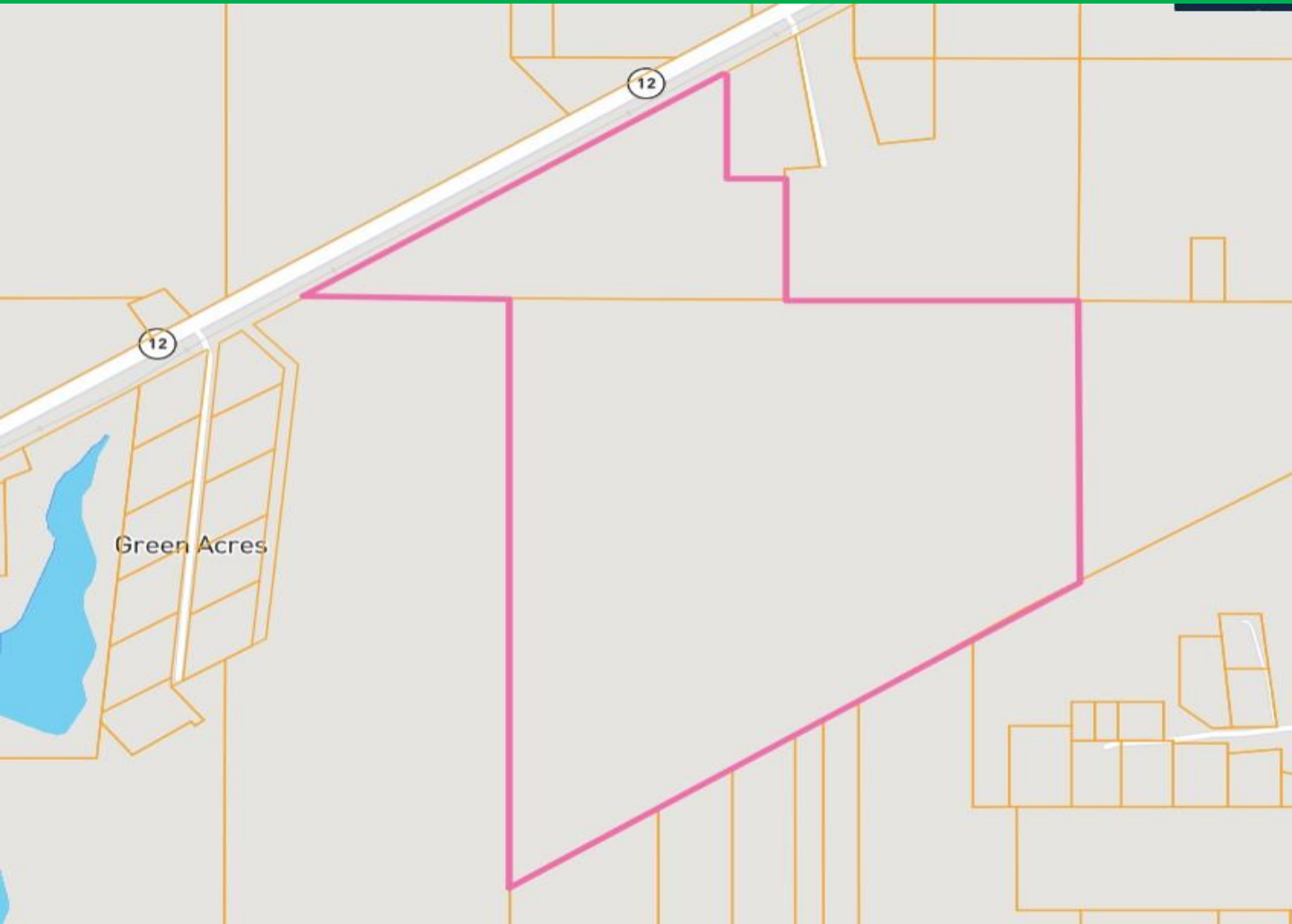


Expect More. Get More.

TomSmithLandandHomes.com

Information is believed to be accurate but not guaranteed.

Ownership Map



Call me today!

WALKER TRANUM, REALTOR®

Walker@TomSmithLand.com

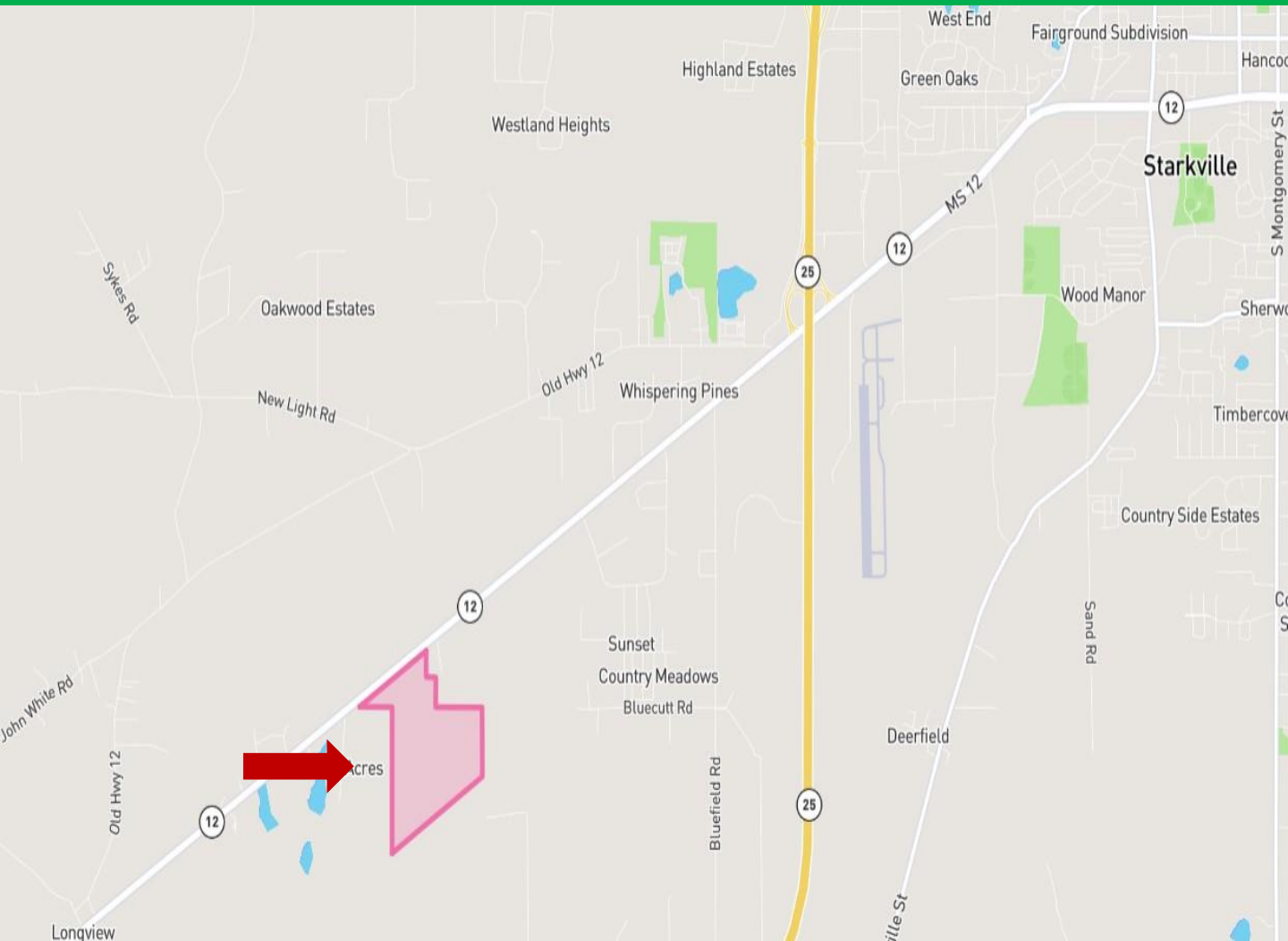
662.268.6333 office | 662.769.1442 cell



TomSmithLandandHomes.com

Information is believed to be accurate but not guaranteed.

Directional Map



Directions from Starkville, HWY 12: Travel west on Hwy 12 for 2.95 miles. The property will be on your left.



Call me today!

WALKER TRANUM, REALTOR®
Walker@TomSmithLand.com
662.268.6333 office | 662.769.1442 cell



TomSmithLandandHomes.com

Information is believed to be accurate but not guaranteed.