

137+/- Acres in Webster County, MS Timber Investment/Recreational Tract



\$308,250

This Webster County, MS property consists of 137+/- acres, located approximately 10 minutes northwest of Eupora. If you have been searching for a tract that can provide multiple potential home or cabin sites, great hunting, and a timber investment, this is for you! The property features a small pond, approximately 1,200 feet of frontage on Center road, and two seasonal creeks. Enjoy chasing the abundant wildlife easily while traveling the established internal trails. The timber consists of a mixture of pines and hardwood bottoms. Utilities are located on Center Road. Call Harper Day today to schedule a private showing!

Directions From Eupora, MS: Travel south on Veterans Memorial Boulevard for 0.3 miles. Turn right onto Hall Road and travel 0.7 miles. Turn right onto MLK Jr Drive and travel for 3.5 miles. Turn left onto Center Road and travel for 1.5 miles. Property will be on your left. [GOOGLE MAP HERE](#)



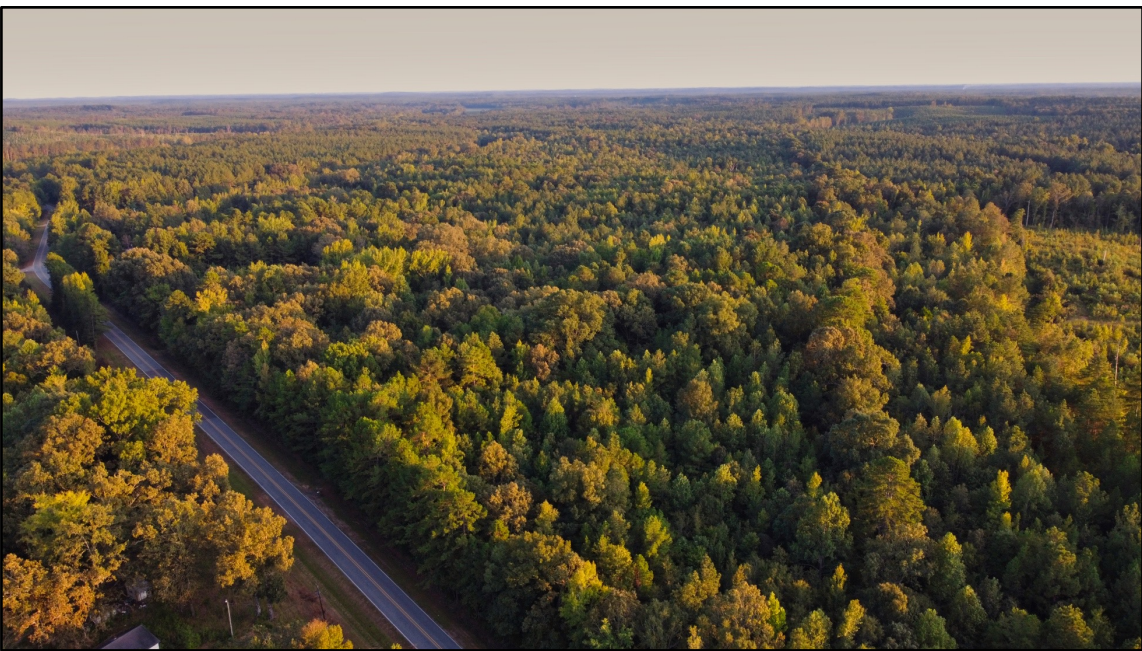
call me today!

HARPER DAY, REALTOR®
Harper@TomSmithLand.com
662.268.6333 office | 662.694.9751 cell



TomSmithLandandHomes.com

Information is believed to be accurate but not guaranteed.



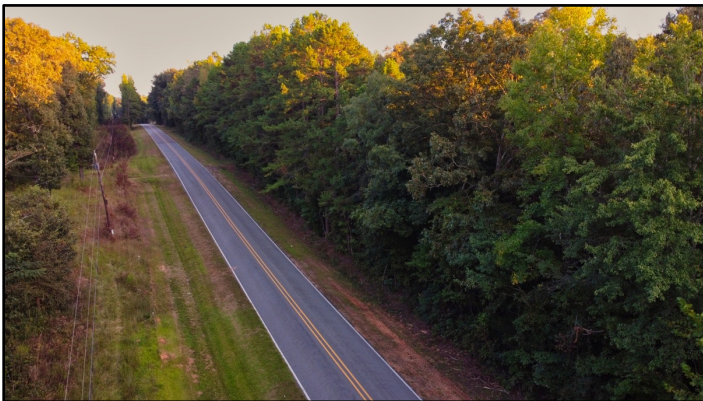
call me today!

HARPER DAY, REALTOR®
Harper@TomSmithLand.com
662.268.6333 office | 662.694.9751 cell



TomSmithLandandHomes.com

Information is believed to be accurate but not guaranteed.



Call me today!

HARPER DAY, REALTOR®
Harper@TomSmithLand.com
662.268.6333 office | 662.694.9751 cell

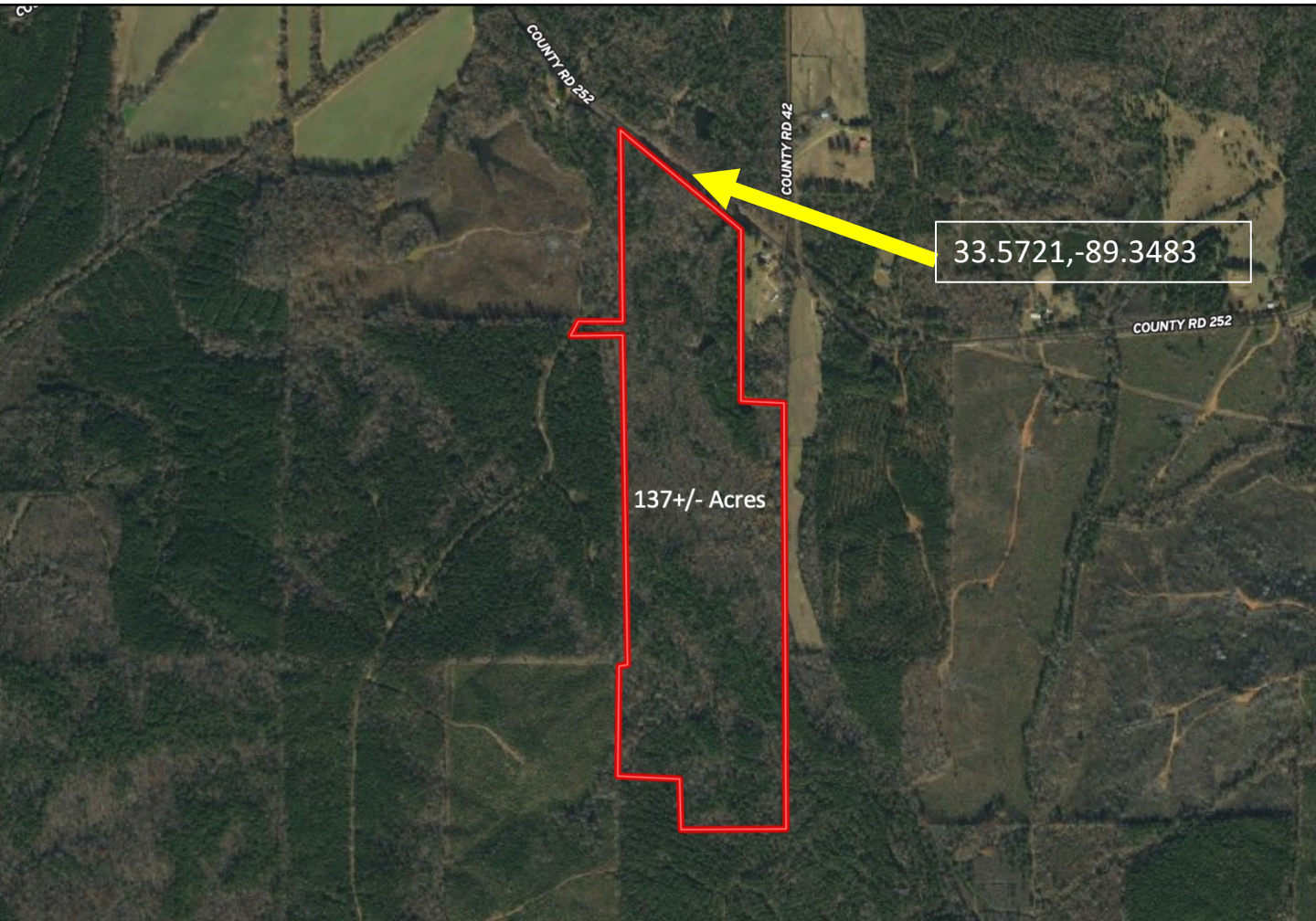


Expect More. Get More.

TomSmithLandandHomes.com

Information is believed to be accurate but not guaranteed.

Aerial Map



call me today!

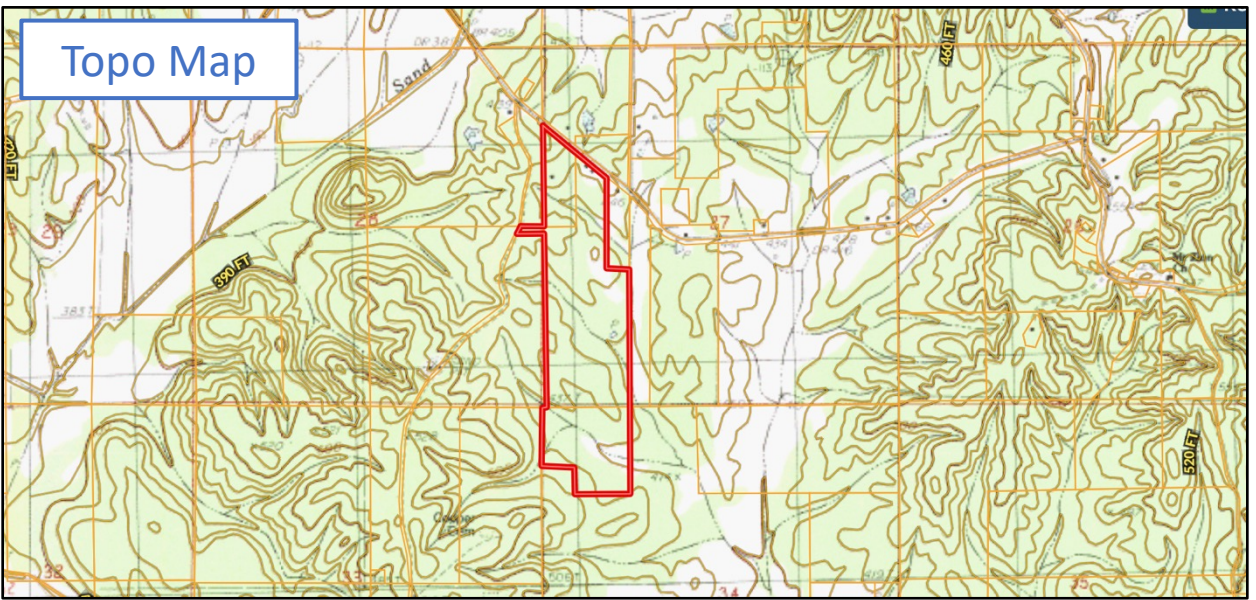
HARPER DAY, REALTOR®
Harper@TomSmithLand.com
662.268.6333 office | 662.694.9751 cell



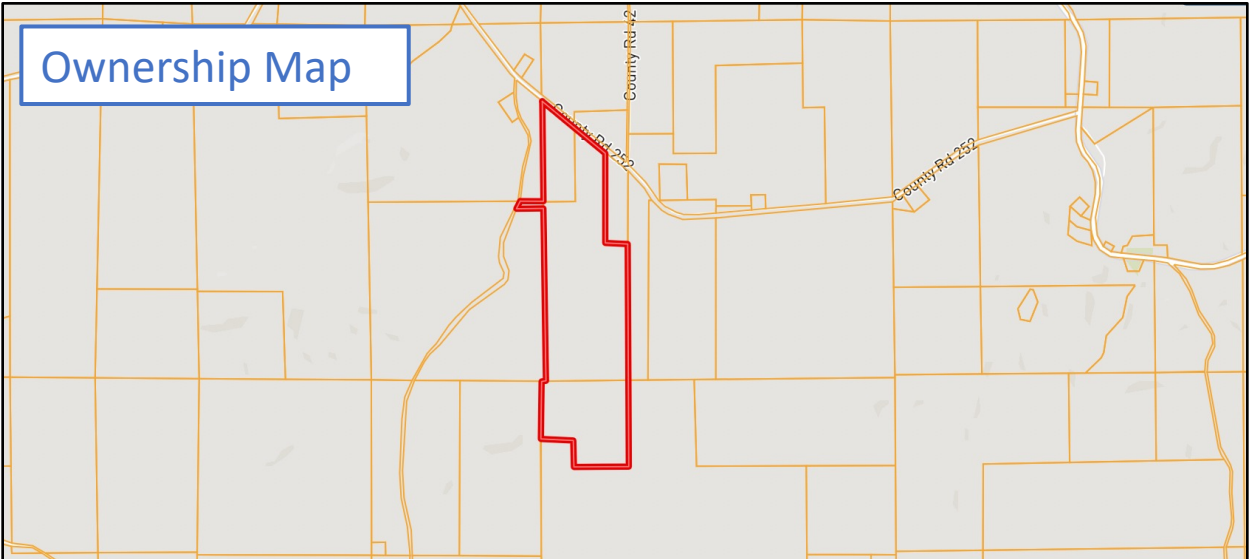
TomSmithLandandHomes.com

Information is believed to be accurate but not guaranteed.

Topo Map



Ownership Map



call me today!



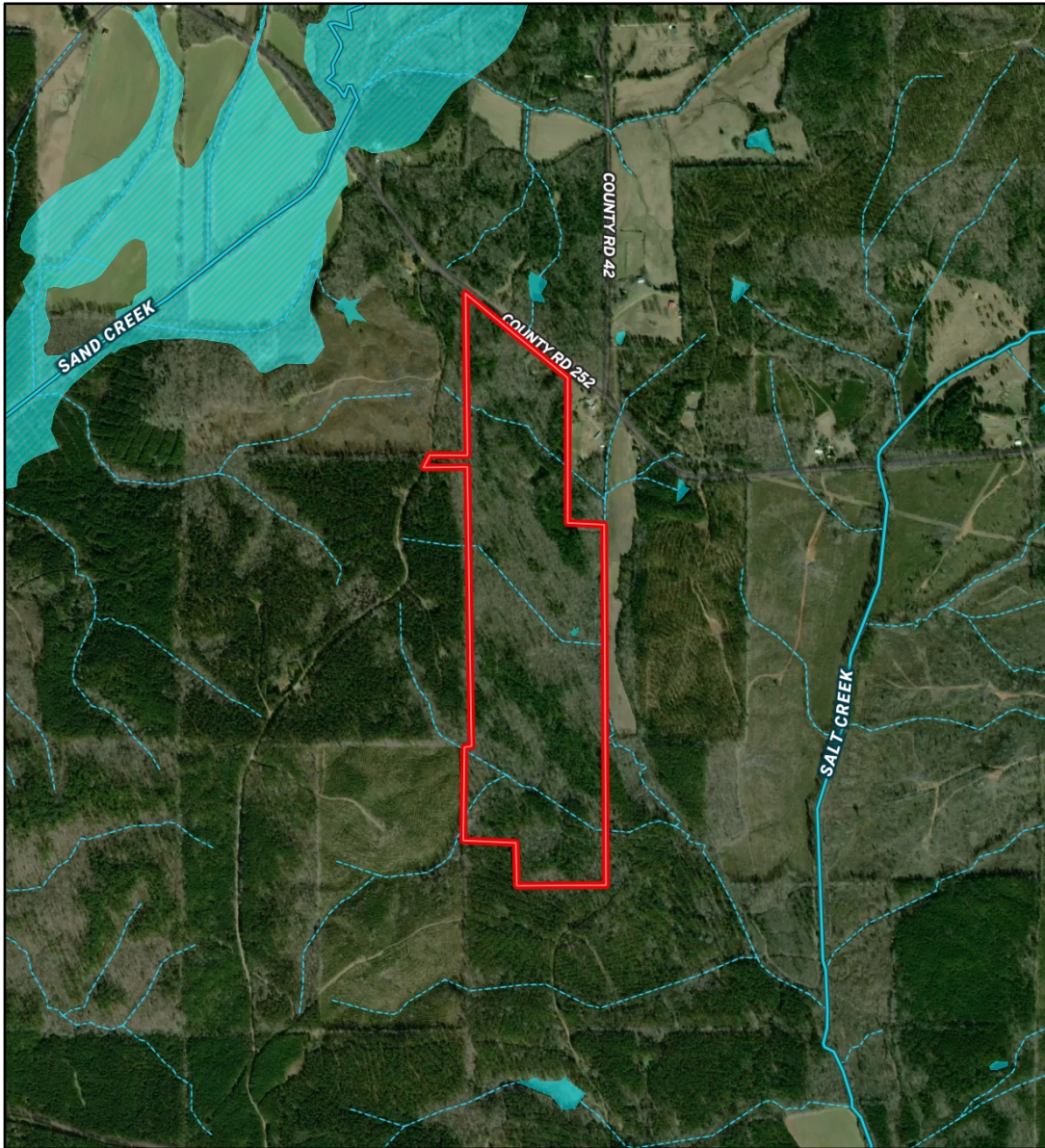
HARPER DAY, REALTOR®
Harper@TomSmithLand.com
662.268.6333 office | 662.694.9751 cell

Expect More. Get More.

TomSmithLandandHomes.com

Information is believed to be accurate but not guaranteed.

FEMA Flood and Water Feature Map



call me today!

HARPER DAY, REALTOR®
Harper@TomSmithLand.com
662.268.6333 office | 662.694.9751 cell



TomSmithLandandHomes.com

Information is believed to be accurate but not guaranteed.

Directional Map



Directions From Eupora, MS: Travel south on Veterans Memorial Boulevard for 0.3 miles. Turn right onto Hall Road and travel 0.7 miles. Turn right onto MLK Jr Drive and travel for 3.5 miles. Turn left onto Center Road and travel for 1.5 miles. Property will be on your left. [GOOGLE MAP HERE](#)



call me today!

HARPER DAY, REALTOR®
Harper@TomSmithLand.com
662.268.6333 office | 662.694.9751 cell



TomSmithLandandHomes.com

Information is believed to be accurate but not guaranteed.