

Development Opportunity Choctaw County, MS



\$27,000

This 1+/- acre development property is located in Choctaw County within the city limits of Ackerman, MS. This tract has approximately 190 feet of paved road frontage on N Louisville Street. The property is zoned R-3 (multi-dwelling). Utilities are located at the road. Tree clearing will be minimal since the majority of the property consists of open land. Call Michael today to schedule a showing.

Directions: From the intersection of Cherry Street and Hwy 15 in Ackerman travel east on Cherry Street for .25 miles. At the four way stop, travel north on Louisville Street for 300 feet and the property will be on the right. [Google Maps Link](#)



call me today!

MICHAEL COOPER, REALTOR®

MCooper@TomSmithLand.com

662.268.6333 **office** | 662.285.8686 **cell**

135 Jefferson Street | Starkville, MS 39759



Expect More. Get More.

TomSmithLandandHomes.com

Information is believed to be accurate but not guaranteed.



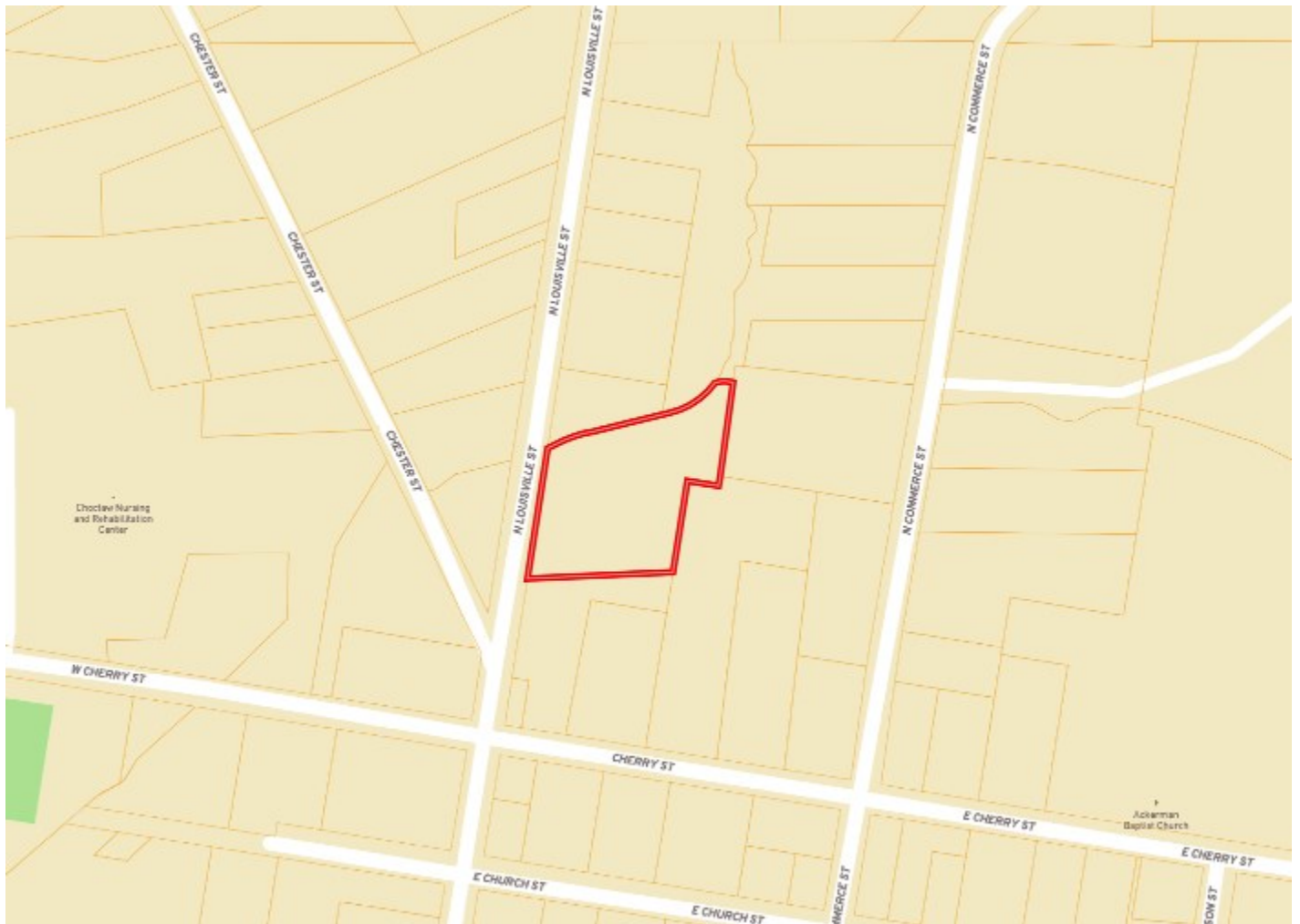
MICHAEL COOPER, REALTOR®
MCooper@TomSmithLand.com
662.268.6333 office | 662.285.8686 cell
135 Jefferson Street | Starkville, MS 39759



TomSmithLandandHomes.com

Information is believed to be accurate but not guaranteed.

OWNERSHIP MAP



MICHAEL COOPER, REALTOR®
MCooper@TomSmithLand.com
662.268.6333 office | 662.285.8686 cell
135 Jefferson Street | Starkville, MS 39759



TomSmithLandandHomes.com

Information is believed to be accurate but not guaranteed.

Interactive Map

AERIAL MAP



MICHAEL COOPER, REALTOR®
MCooper@TomSmithLand.com
662.268.6333 office | 662.285.8686 cell
135 Jefferson Street | Starkville, MS 39759



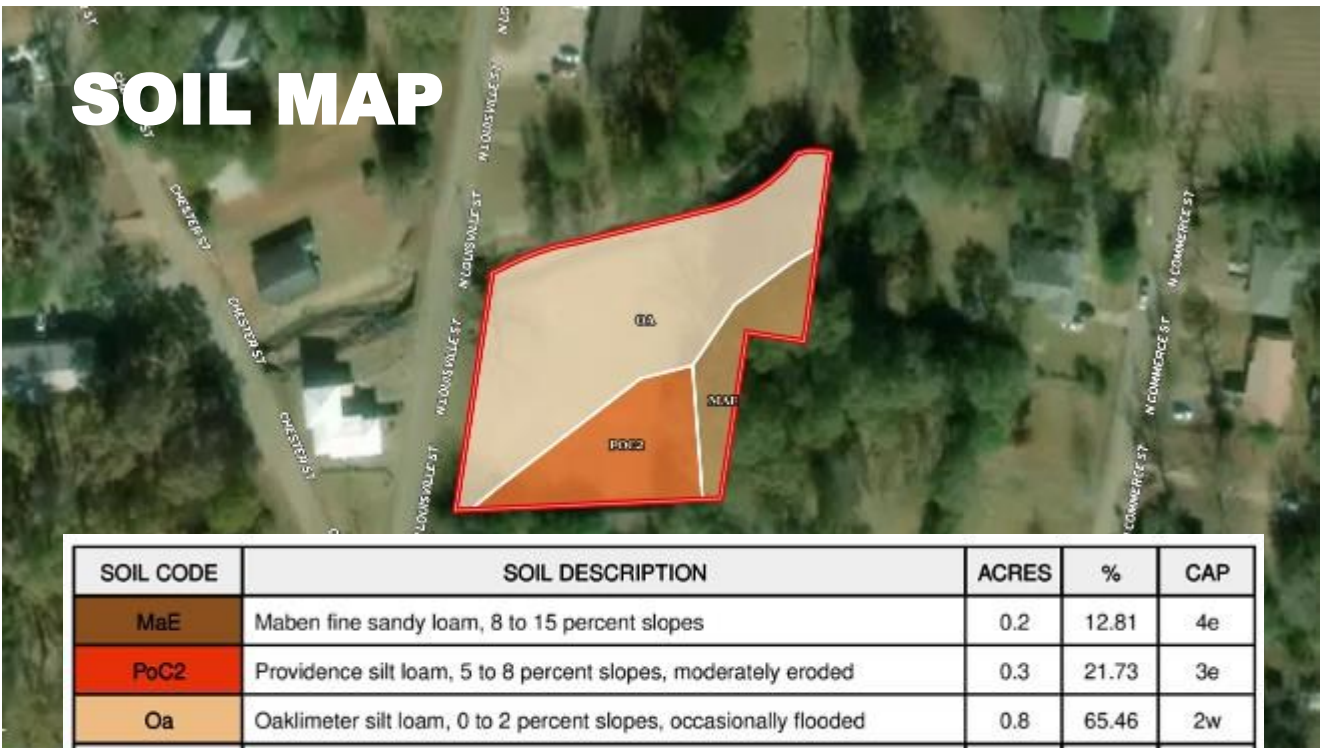
TomSmithLandandHomes.com

Information is believed to be accurate but not guaranteed.

TOPO MAP



SOIL MAP



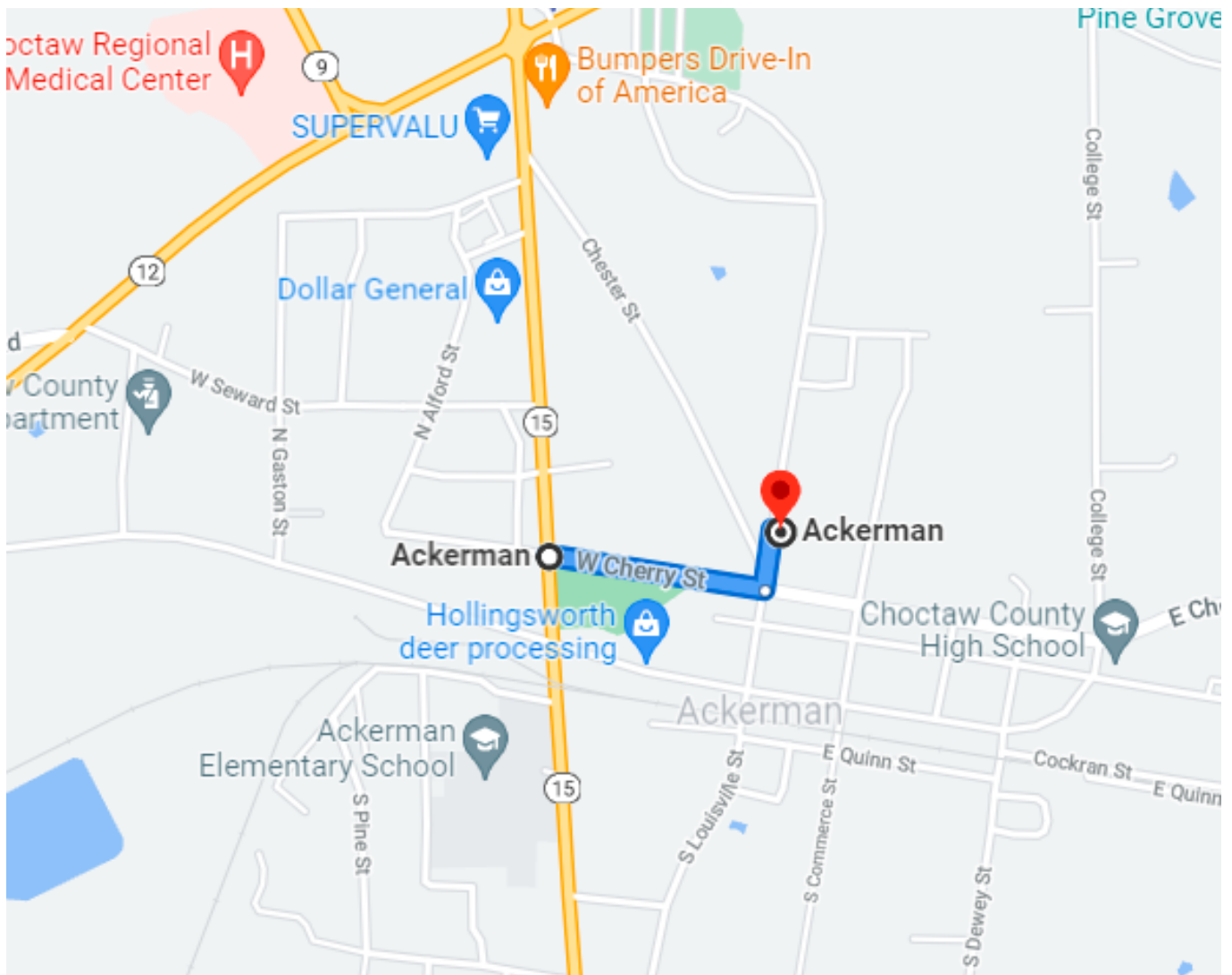
MICHAEL COOPER, REALTOR®
MCooper@TomSmithLand.com
662.268.6333 office | 662.285.8686 cell
135 Jefferson Street | Starkville, MS 39759



TomSmithLandandHomes.com

Information is believed to be accurate but not guaranteed.

DIRECTIONAL MAP



Directions: From the intersection of Cherry Street and Hwy 15 in Ackerman travel east on Cherry Street for .25 miles. At the four way stop, travel north on Louisville Street for 300 feet and the property will be on the right. [Google Maps Link](#)



MICHAEL COOPER, REALTOR®
MCooper@TomSmithLand.com
662.268.6333 office | 662.285.8686 cell
135 Jefferson Street | Starkville, MS 39759



TomSmithLandandHomes.com

Information is believed to be accurate but not guaranteed.