

Development Opportunity Choctaw County, MS



\$15,000

This 1+/- acre development property is located in Choctaw County within the city limits of Ackerman, MS. This tract has approximately 190 feet of paved road frontage on N Louisville Street. The property is zoned R-3 (multi-dwelling). Utilities are located at the road. Tree clearing will be minimal since the majority of the property consists of open land. Call Michael today to schedule a showing.

Directions: From the intersection of Cherry Street and Hwy 15 in Ackerman travel east on Cherry Street for .25 miles. At the four way stop, travel north on Louisville Street for 300 feet and the property will be on the right. [Google Maps Link](#)



Call me today!

MICHAEL COOPER, REALTOR®
Mcooper@TomSmithLand.com
662.268.6333 **office** | 662.285.8686 **cell**



Expect More. Get More.

TomSmithLandandHomes.com

Information is believed to be accurate but not guaranteed.



Call me today!

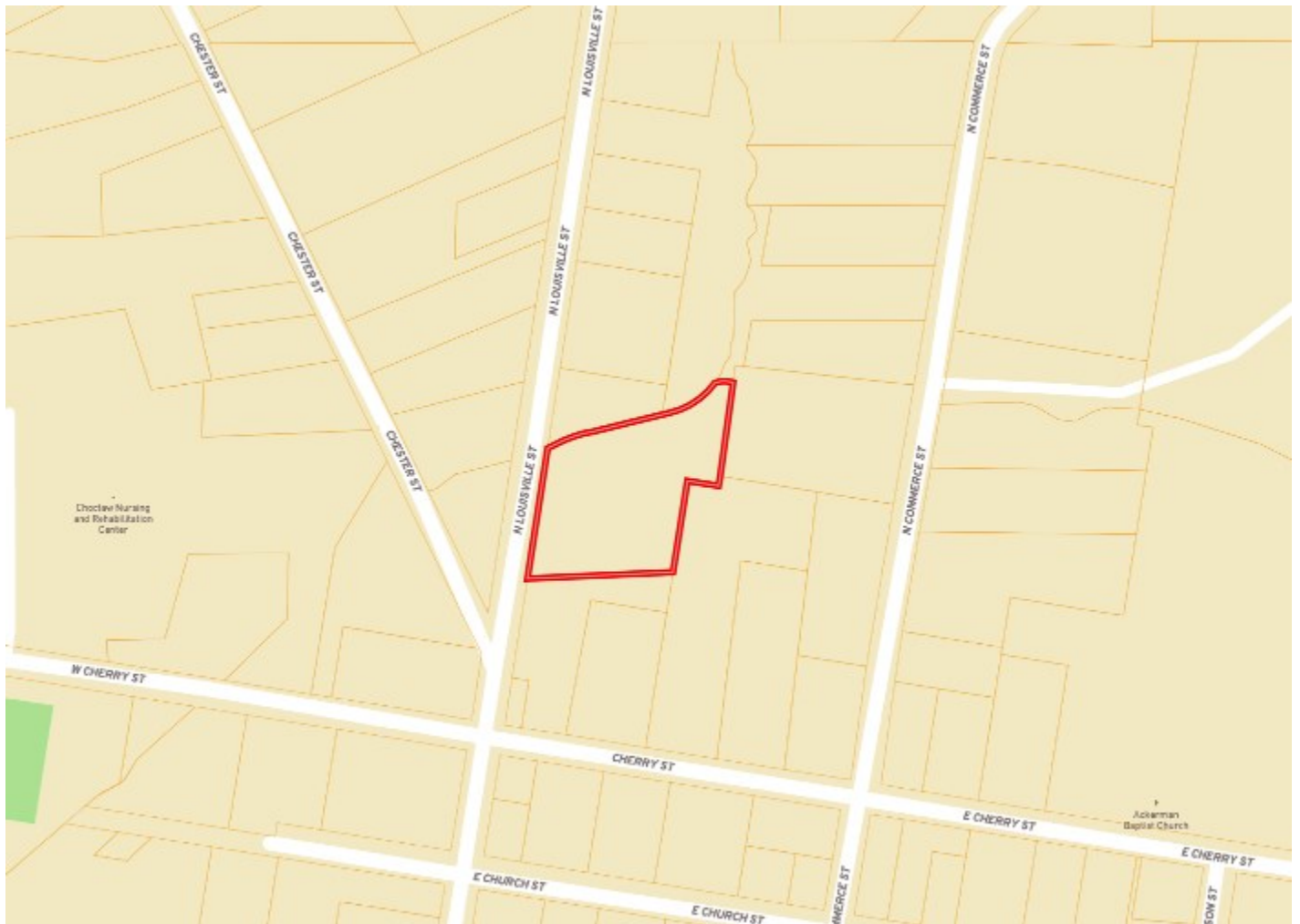
MICHAEL COOPER, REALTOR®
 Mcooper@TomSmithLand.com
 662.268.6333 **office** | 662.285.8686 **cell**



TomSmithLandandHomes.com

Information is believed to be accurate but not guaranteed.

OWNERSHIP MAP



Call me today!

MICHAEL COOPER, REALTOR®
Mcooper@TomSmithLand.com
662.268.6333 **office** | 662.285.8686 **cell**



TomSmithLandandHomes.com

Information is believed to be accurate but not guaranteed.



Call me today!

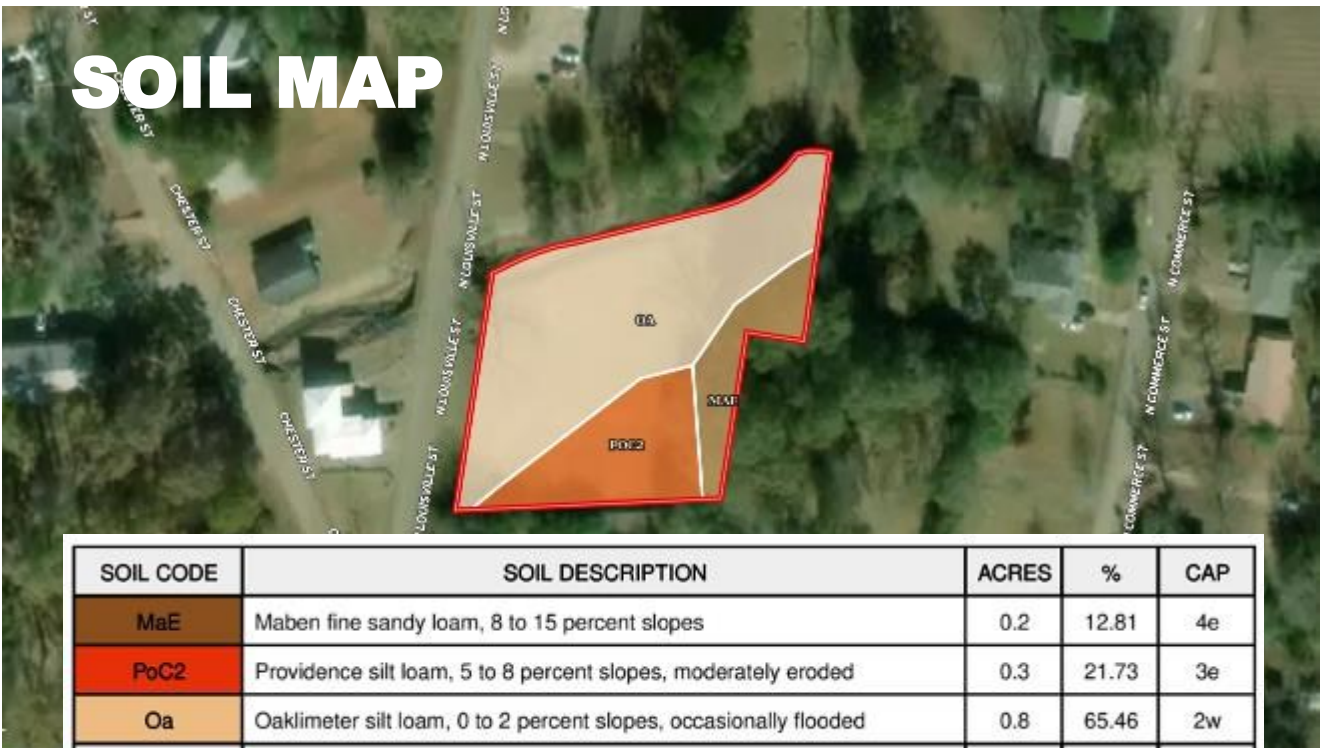
MICHAEL COOPER, REALTOR®
Mcooper@TomSmithLand.com
662.268.6333 **office** | 662.285.8686 **cell**



TomSmithLandandHomes.com

Information is believed to be accurate but not guaranteed.





SOIL CODE	SOIL DESCRIPTION	ACRES	%	CAP
MaE	Maben fine sandy loam, 8 to 15 percent slopes	0.2	12.81	4e
PoC2	Providence silt loam, 5 to 8 percent slopes, moderately eroded	0.3	21.73	3e
Oa	Oaklimeter silt loam, 0 to 2 percent slopes, occasionally flooded	0.8	65.46	2w
TOTALS		1.3	100%	2.47

Call me today!

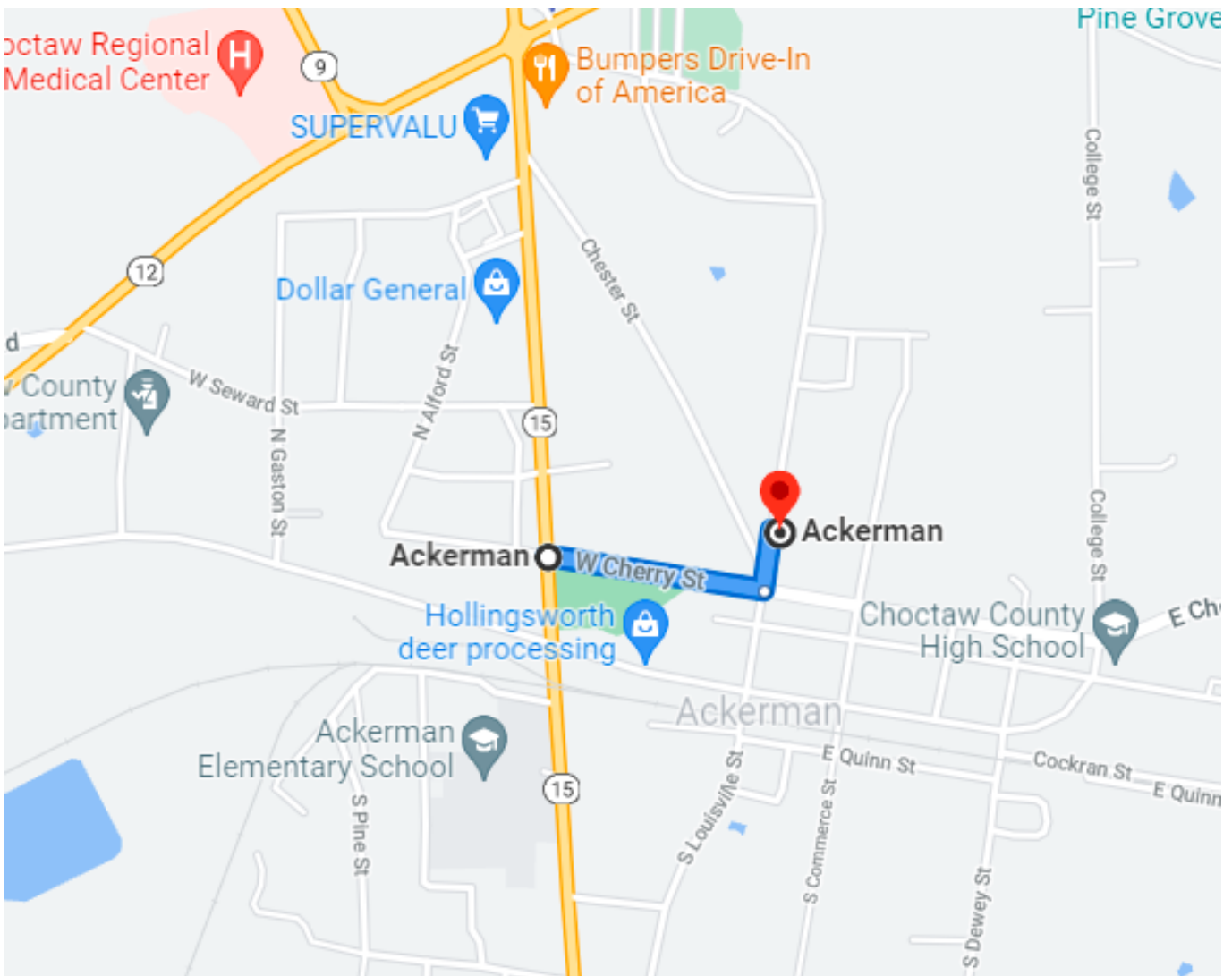
MICHAEL COOPER, REALTOR®
 Mcooper@TomSmithLand.com
 662.268.6333 **office** | 662.285.8686 **cell**



TomSmithLandandHomes.com

Information is believed to be accurate but not guaranteed.

DIRECTIONAL MAP



Directions: From the intersection of Cherry Street and Hwy 15 in Ackerman travel east on Cherry Street for .25 miles. At the four way stop, travel north on Louisville Street for 300 feet and the property will be on the right. [Google Maps Link](#)

Call me today!

MICHAEL COOPER, REALTOR®
Mcooper@TomSmithLand.com
662.268.6333 **office** | 662.285.8686 **cell**



TomSmithLandandHomes.com

Information is believed to be accurate but not guaranteed.