

3+/- Acre Camp Adjoining the Homochitto National Forest Franklin County, MS



3059 Union Church Rd Meadville, MS 39653

\$115,000

Take a look at this two bedroom, one bath home on 3 +/- acres in Franklin County, MS adjoining the Homochitto National Forest. **This may be the perfect deer camp property!!** The 1,400+/-square foot home offers a one bedroom, one bath mother-in-law suite attached to the back. In addition to the primary residence, there is a two bedroom, one bath trailer and two camper hook up locations. Two ponds, one stocked with bass and hybrid bream complete this tract. The primary home is designed to withstand hurricane winds of up to 120 MPH. The main home has been well maintained and is move in ready, while some minor work is required for the trailer. Sharing a boundary with the Homochitto National Forest makes this one of the most desirable properties in Franklin County. Call Clif Cannon to schedule a showing.



call me today!

CLIF CANNON, REALTOR®

Clif@TomSmithLand.com

601.990.5070 office | 601.565.1070 cell



LandReport
2010-2021
BEST
BROKERAGES

TomSmithLandandHomes.com

Information is believed to be accurate but not guaranteed.



CLIF CANNON, REALTOR®
 Clif@TomSmithLand.com
 601.990.5070 office | 601.565.1070 cell



Expect More. Get More.

TomSmithLandandHomes.com

Information is believed to be accurate but not guaranteed.



CLIF CANNON, REALTOR®

Clif@TomSmithLand.com

601.990.5070 office | 601.565.1070 cell



Expect More. Get More.

TomSmithLandandHomes.com

Information is believed to be accurate but not guaranteed.



Mother-in-Law Suite



CLIF CANNON, REALTOR®
Clif@TomSmithLand.com
601.990.5070 office | 601.565.1070 cell



TomSmithLandandHomes.com

Information is believed to be accurate but not guaranteed.

Aerial Map



CLIF CANNON, REALTOR®

Clif@TomSmithLand.com

601.990.5070 office | 601.565.1070 cell



Expect More. Get More.



TomSmithLandandHomes.com

Information is believed to be accurate but not guaranteed.

Flood Map



Topo Map



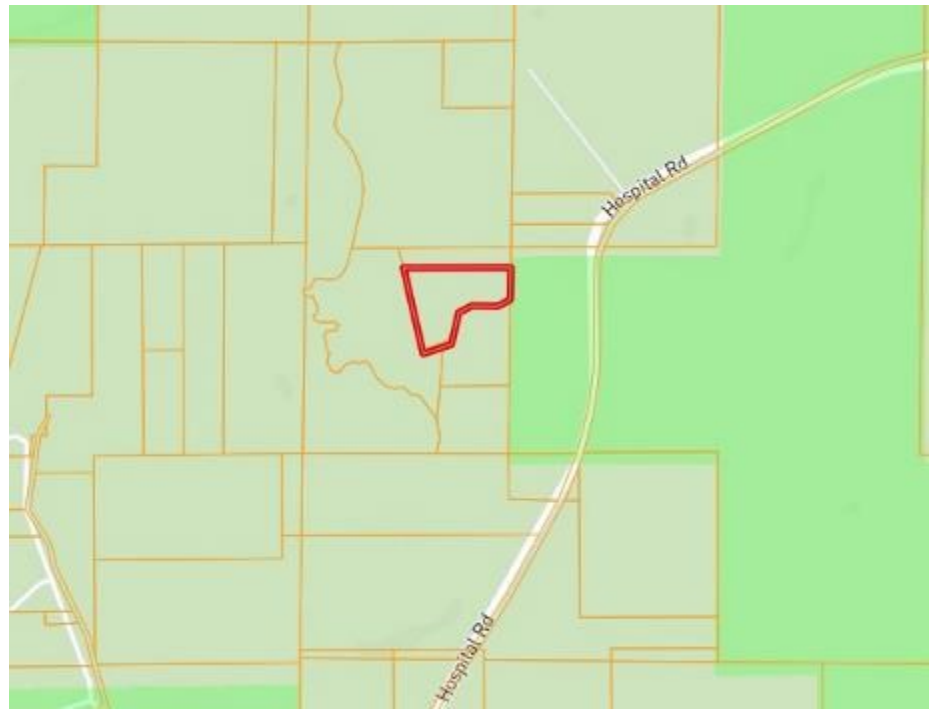
CLIF CANNON, REALTOR®
Clif@TomSmithLand.com
601.990.5070 office | 601.565.1070 cell



TomSmithLandandHomes.com

Information is believed to be accurate but not guaranteed.

Ownership Map



Directional Map

From Sullivan's Grocery in Bude, MS: Travel northwest on US-184 for 1.8 miles. Turn right onto Union Church Road / Hospital Road and travel north for 3.1 miles. Turn right at the drive and continue to the sign in the yard.

Address: 3059 Union Church Road Meadville, MS 39653



CLIF CANNON, REALTOR®
Clif@TomSmithLand.com
601.990.5070 office | 601.565.1070 cell



TomSmithLandandHomes.com

Information is believed to be accurate but not guaranteed.