



# Historic Home in the Heart of Brookhaven Lincoln County, MS



539 S Jackson Street  
Brookhaven, MS 39601

**\$399,995**

If you love Brookhaven, MS you need to see this two story, five bedroom, four bath home situated on .43+/- acres on South Jackson Street! The Lincoln County home built in 1940 and recently updated in 2013 features approximately 4,500 square feet with plenty of room to grow and entertain, right here, in the heart of the Home Seekers Paradise. Just beyond the unique, yellow front door, you will find a spacious open floor plan with a school room, formal dining area with an abundance of natural light, a game room, master suite, full guest bath, kitchen, pantry and laundry room. The second level of the home provides an oversized seating area with a library, four bedrooms and two full baths. Enjoy the original hardwood floors which remain intact along with many other "authentic" touches. The spacious white columned portico takes you back to simpler times and the veranda out back facing east would be the perfect spot for mimosas and a good book to get your day started! Out back there are tons of places to enjoy the outdoors with the fenced in back yard with a play area for the kids. If you are seeking a home with character, fun and an inviting atmosphere, this labor of love is ready for you! Call Sabrina today to schedule a private viewing!

Directions from the Intersection of Hwy 51 S and Natchez Avenue in Brookhaven, MS: Take a right and travel east onto Natchez Ave. At the curve, the road becomes S Jackson Street and the house is on the right in 0.2 miles.



LandReport  
2010-2021  
AMERICA'S  
BEST  
BROKERAGES

*call me today!*

**SABRINA WOLFF**, REALTOR®  
Sabrina@TomSmithHomes.com  
601.990.5070 office | 601.754.3763 cell



Expect More. Get More.

**TomSmithLandandHomes.com**

Information is believed to be accurate but not guaranteed.



*Call me today!*

**SABRINA WOLFE, REALTOR®**  
Sabrina@TomSmithHomes.com  
601.990.5070 office | 601.754.3763 cell



**TomSmithLandandHomes.com**

Information is believed to be accurate but not guaranteed.



2010-2021  
AMERICAN  
BEST  
BROKERAGES

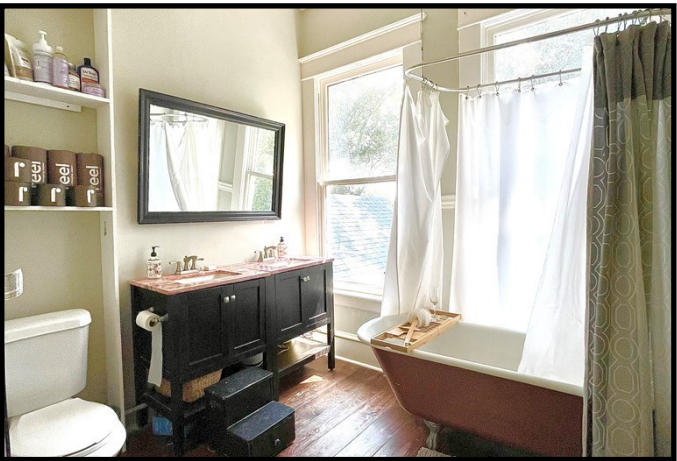
*Call me today!*

**SABRINA WOLFE, REALTOR®**  
Sabrina@TomSmithHomes.com  
601.990.5070 office | 601.754.3763 cell



**TomSmithLandandHomes.com**

Information is believed to be accurate but not guaranteed.



LandReport  
2010-2021  
AMERICAN  
BEST  
BROKERAGES

*Call me today!*

**SABRINA WOLFE, REALTOR®**  
Sabrina@TomSmithHomes.com  
601.990.5070 office | 601.754.3763 cell



Expect More. Get More.

**TomSmithLandandHomes.com**

Information is believed to be accurate but not guaranteed.

# Aerial Map



*call me today!*

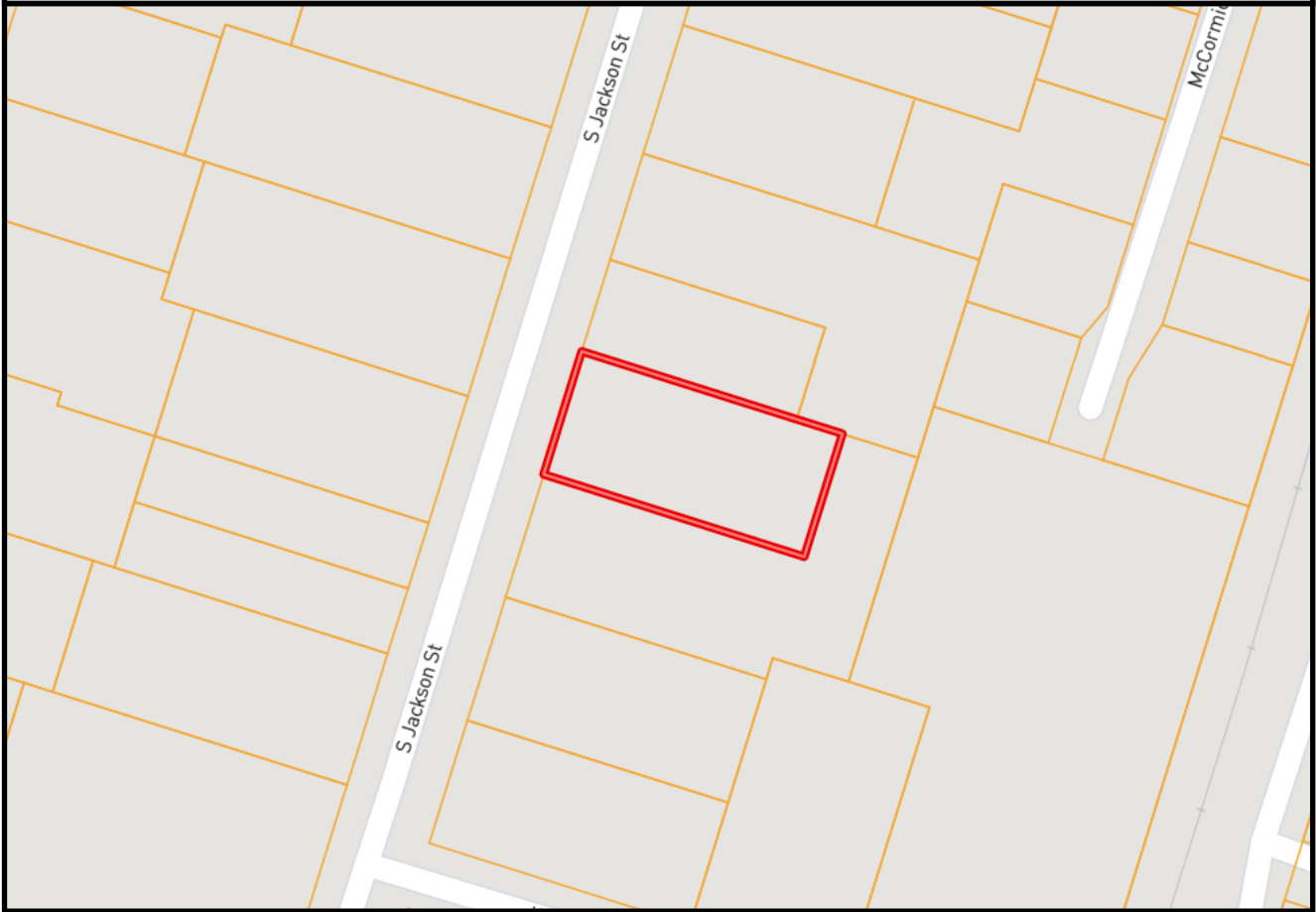
**SABRINA WOLFF**, REALTOR®  
Sabrina@TomSmithHomes.com  
601.990.5070 office | 601.754.3763 cell



**TomSmithLandandHomes.com**

Information is believed to be accurate but not guaranteed.

# Ownership Map



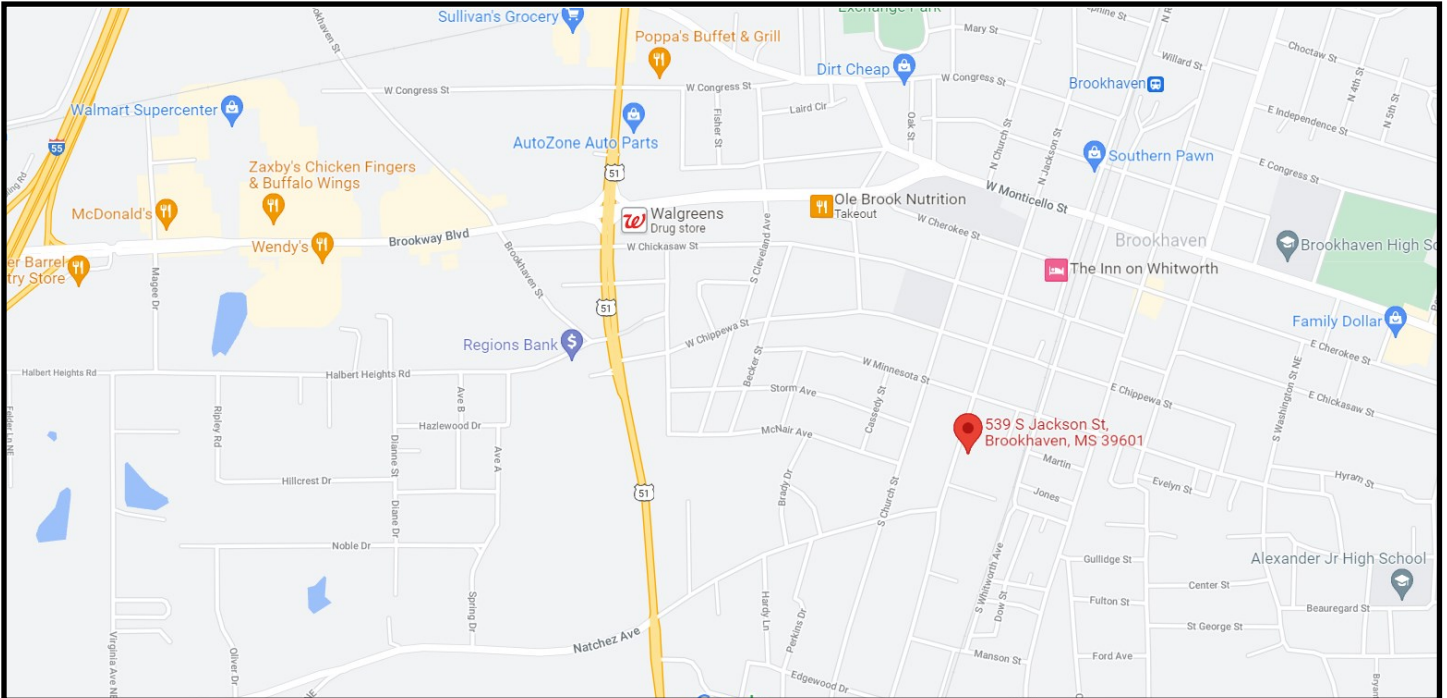
*call me today!*

**SABRINA WOLFF**, REALTOR®  
Sabrina@TomSmithHomes.com  
601.990.5070 office | 601.754.3763 cell



**TomSmithLandandHomes.com**

Information is believed to be accurate but not guaranteed.



## Directional Map

539 S Jackson Street Brookhaven, MS 39601

Directions from the Intersection of Hwy 51 S and Natchez Avenue in Brookhaven, MS: Take a right and travel east onto Natchez Ave. At the curve, the road becomes S Jackson Street and the house is on the right in 0.2 miles.



*Call me today!*

**SABRINA WOLFF**, REALTOR®  
 Sabrina@TomSmithHomes.com  
 601.990.5070 office | 601.754.3763 cell



Expect More. Get More.

**TomSmithLandandHomes.com**

Information is believed to be accurate but not guaranteed.