

# 128+/- Acre Recreational Tract

## Webster County, MS



# \$236,800

This 128+/- acre recreational hunting tract in Webster County, MS is conveniently located approximately 7 miles west of Eupora and 3 miles north of Hwy 82. There are 3 established food plot locations connected with miles of internal trails that make enjoying the abundant wildlife very convenient. A small stocked pond is located on the property. The timber is a mixture of pine and hardwood. There is gravel road frontage on Old Greensboro Road with utilities a short distance away. Call Michael Cooper today to schedule a showing.

**Directions:** From the intersection of Greensboro Road and Hwy 82 in Tomnolen, travel north for 2.8 miles on Greensboro Road. Turn right onto Grady Road travel .3 miles. Turn left on Bailey Road travel .2 miles, then turn right onto Old Greensboro Road and travel 700 feet, the entrance to the property will be on the left.

[Google Maps Link](#)

*call me today!*

**MICHAEL COOPER**, REALTOR®

MCooper@TomSmithLand.com

662.268.6333 office | 662.285.8686 cell

135 Jefferson Street | Starkville, MS 39759



Expect More. Get More.



# TomSmithLandandHomes.com

Information is believed to be accurate but not guaranteed.





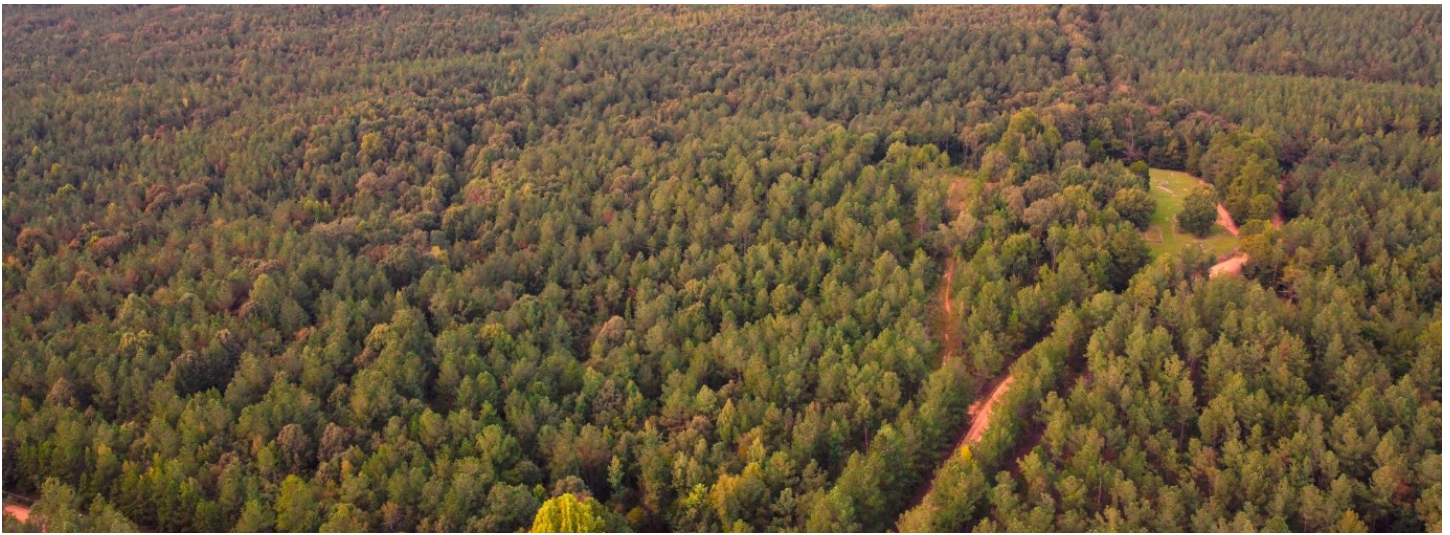
**MICHAEL COOPER**, REALTOR®  
 MCooper@TomSmithLand.com  
 662.268.6333 office | 662.285.8686 cell  
 135 Jefferson Street | Starkville, MS 39759



**TomSmithLandandHomes.com**

Information is believed to be accurate but not guaranteed.





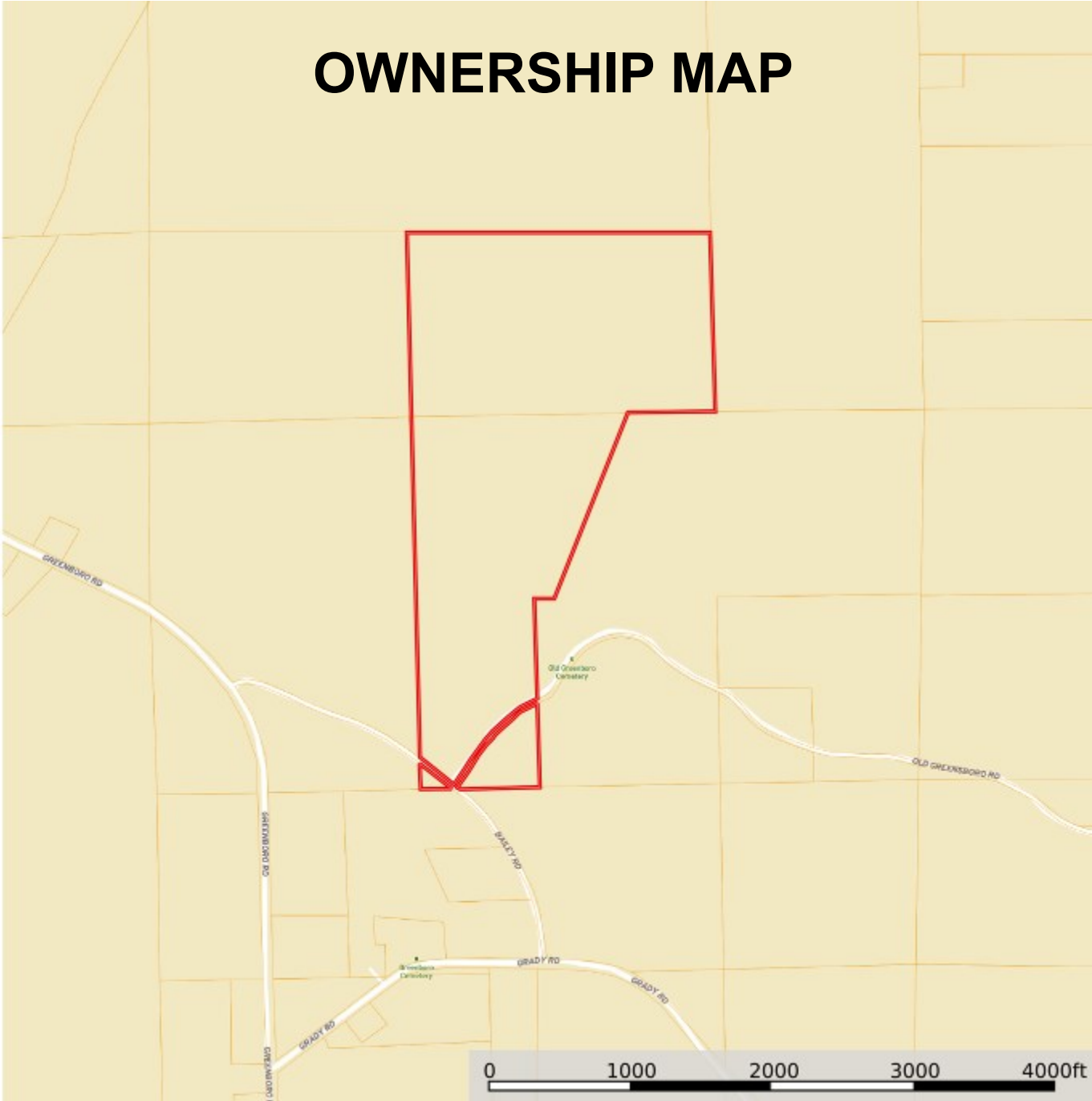
**MICHAEL COOPER**, REALTOR®  
 MCooper@TomSmithLand.com  
 662.268.6333 office | 662.285.8686 cell  
 135 Jefferson Street | Starkville, MS 39759



**TomSmithLandandHomes.com**

Information is believed to be accurate but not guaranteed.

# OWNERSHIP MAP



**MICHAEL COOPER**, REALTOR®  
MCooper@TomSmithLand.com  
662.268.6333 office | 662.285.8686 cell  
135 Jefferson Street | Starkville, MS 39759



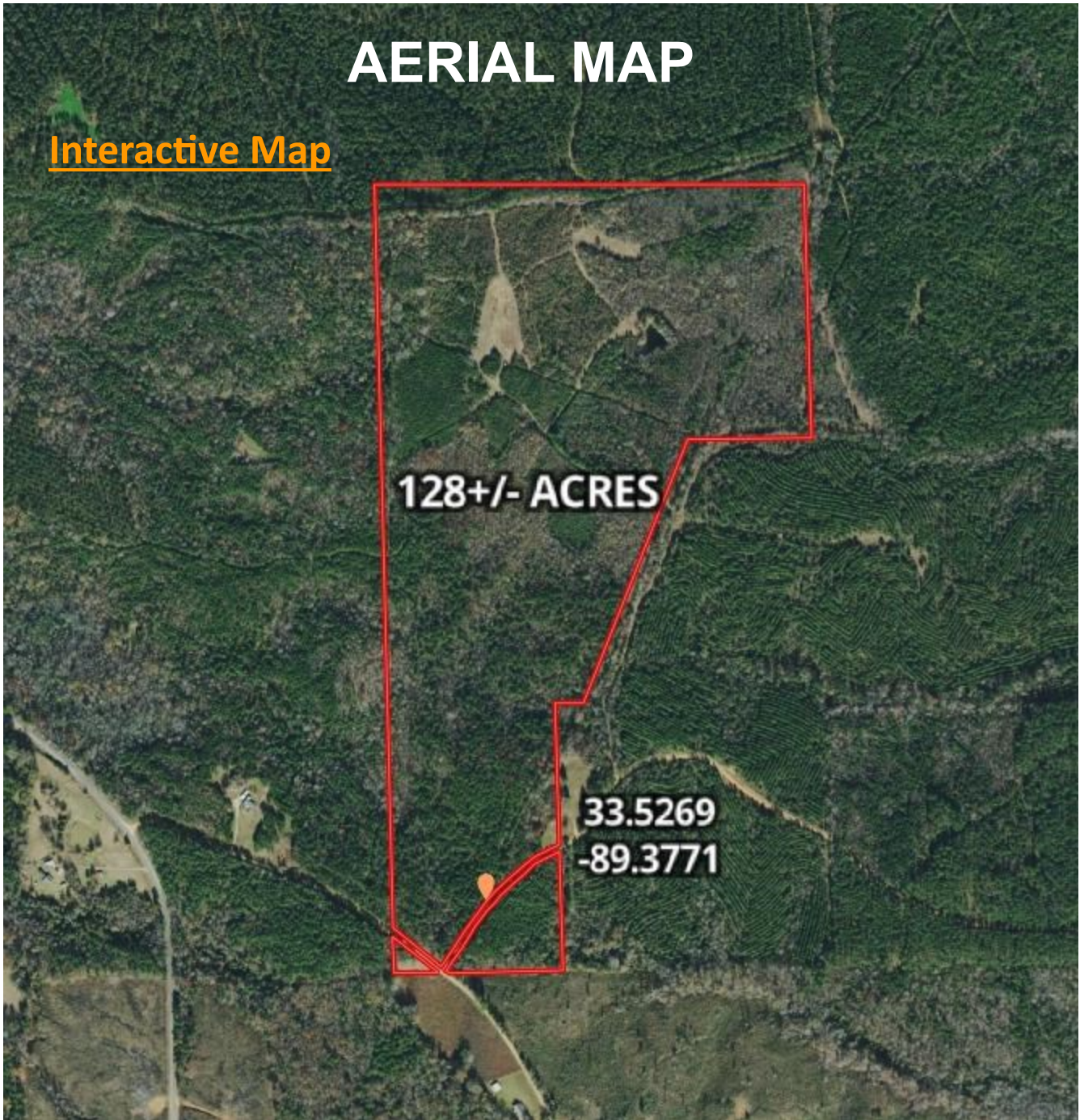
**TomSmithLandandHomes.com**

Information is believed to be accurate but not guaranteed.



# AERIAL MAP

[Interactive Map](#)



**MICHAEL COOPER**, REALTOR®  
MCooper@TomSmithLand.com  
662.268.6333 office | 662.285.8686 cell  
135 Jefferson Street | Starkville, MS 39759



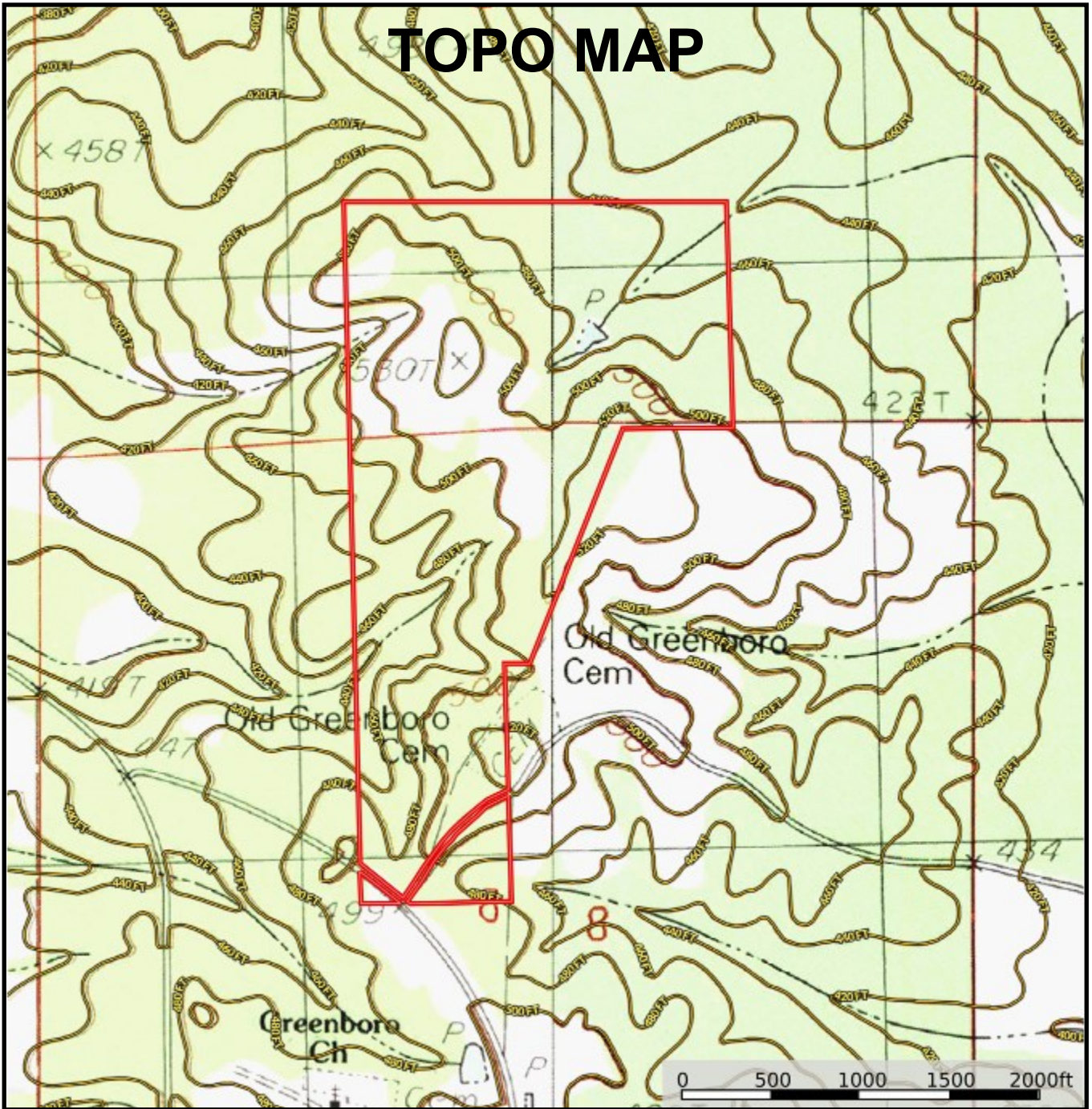
Expect More. Get More.

[TomSmithLandandHomes.com](http://TomSmithLandandHomes.com)

Information is believed to be accurate but not guaranteed.



# TOPO MAP



**MICHAEL COOPER**, REALTOR®  
MCooper@TomSmithLand.com  
662.268.6333 office | 662.285.8686 cell  
135 Jefferson Street | Starkville, MS 39759

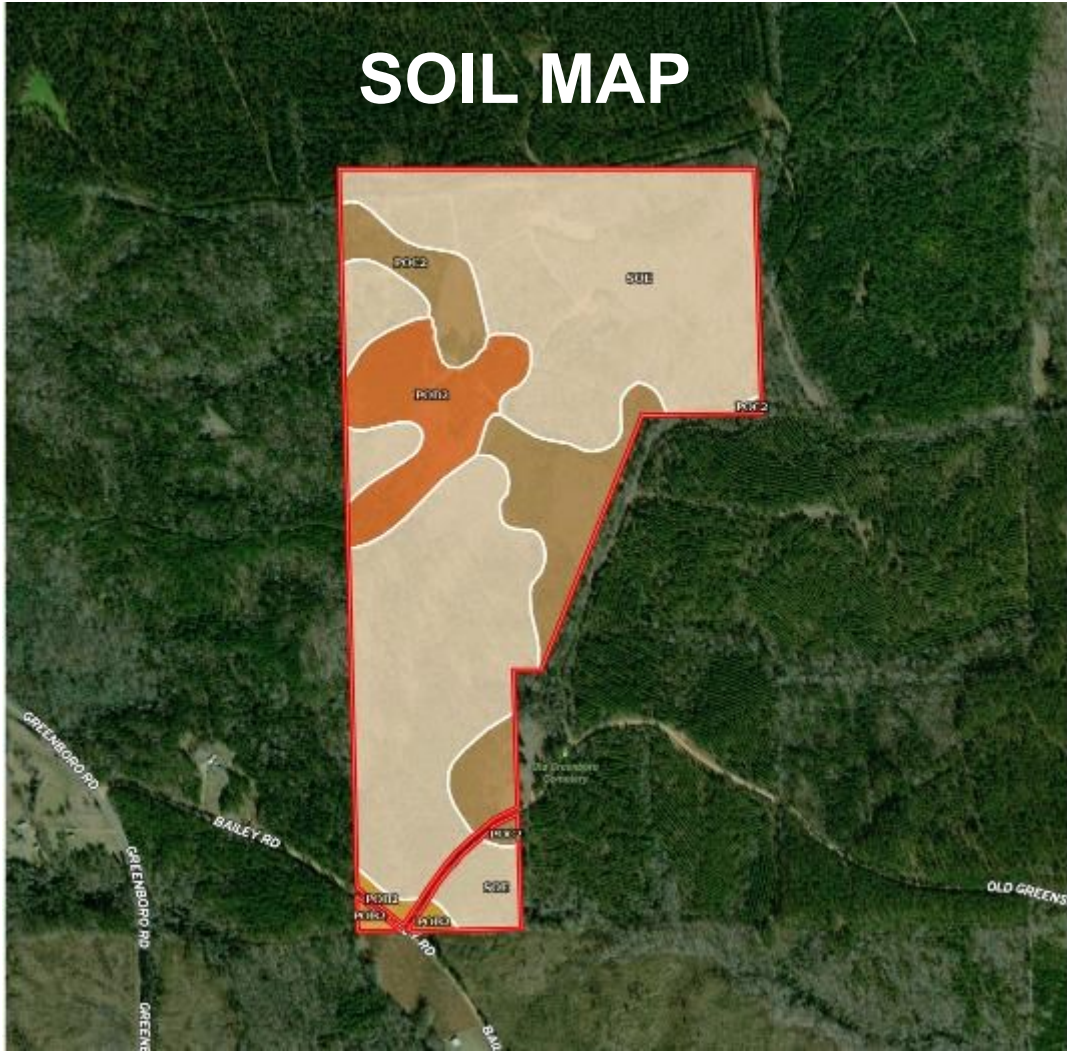


**TomSmithLandandHomes.com**

Information is believed to be accurate but not guaranteed.



# SOIL MAP



SOIL CODE	SOIL DESCRIPTION	ACRES	%	CAP
PoC2	Providence silt loam, 5 to 8 percent slopes, moderately eroded	20.3	16.08	3e
PoD2	Providence silt loam, 8 to 12 percent slopes, eroded	13.1	10.42	4e
SOE	Smithdale-Ora association, hilly	91.0	72.13	7e
PoB2	Providence silt loam, 2 to 5 percent slopes, moderately eroded	1.7	1.37	2e
TOTALS		126.2	100%	5.98

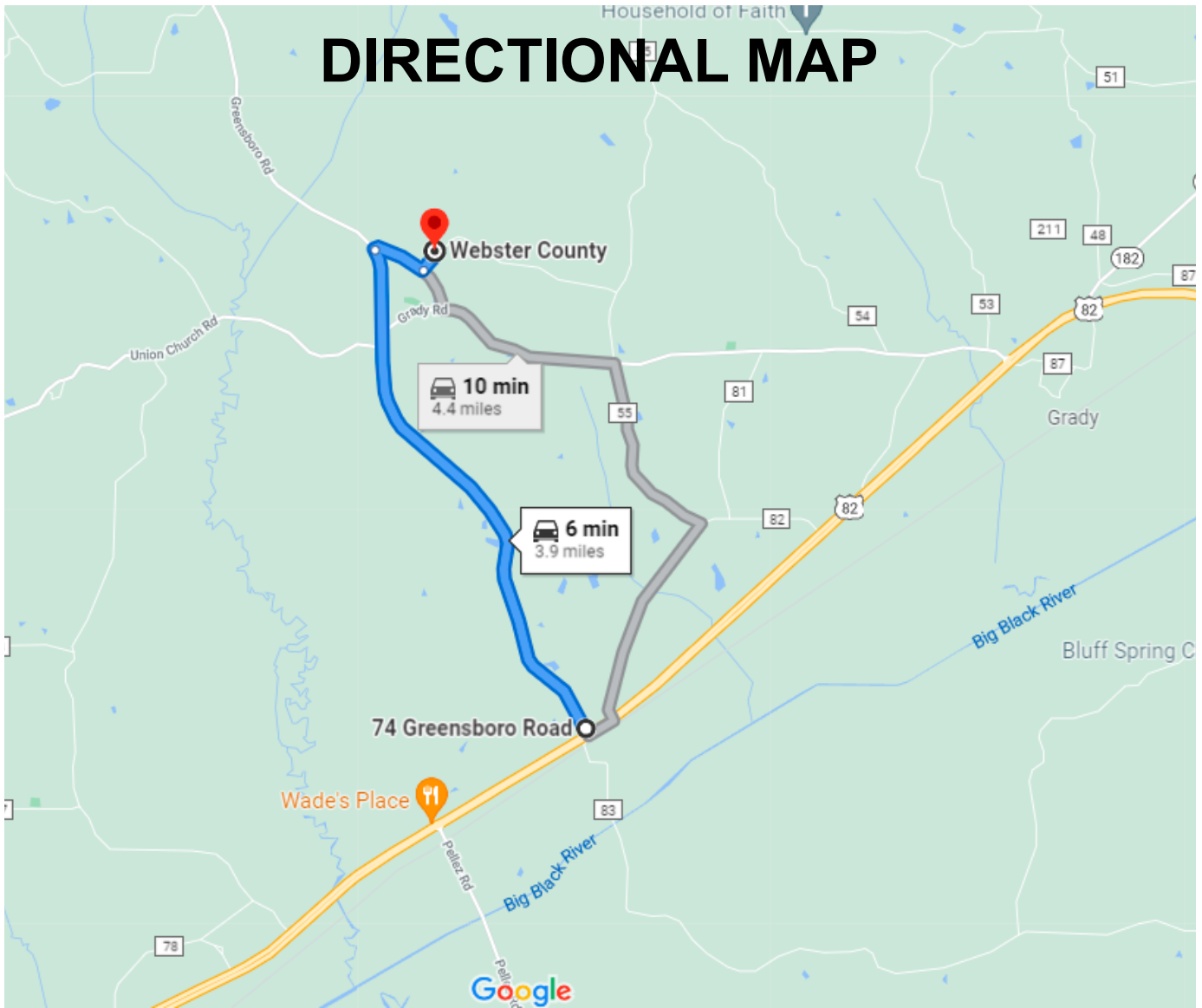


**MICHAEL COOPER**, REALTOR®  
 MCooper@TomSmithLand.com  
 662.268.6333 office | 662.285.8686 cell  
 135 Jefferson Street | Starkville, MS 39759



**TomSmithLandandHomes.com**

Information is believed to be accurate but not guaranteed.



**Directions:** From the intersection of Greensboro Road and Hwy 82 in Tomnolen, travel north for 2.8 miles on Greensboro Road. Turn right onto Grady Road travel .3 miles. Turn left on Bailey Road travel .2 miles, then turn right onto Old Greensboro Road and travel 700 feet, the entrance to the property will be on the left. [Google Maps Link](#)



**MICHAEL COOPER**, REALTOR®  
 MCooper@TomSmithLand.com  
 662.268.6333 office | 662.285.8686 cell  
 135 Jefferson Street | Starkville, MS 39759



**TomSmithLandandHomes.com**

Information is believed to be accurate but not guaranteed.