

# 91+/- ACRE COMMERCIAL LISTING

Jefferson Davis  
County, MS

## GOLDEN PINES RACEWAY

103 Golden Pine Road  
Prentiss, MS 39474

**\$550,000**



LARGE MAIN TRACK  
& SMALLER MULTI  
USE TRACK



40+ RV  
HOOKUPS



3 BED/2 BATH  
1,200 SF  
FURNISHED MOBILE  
HOME

DIRECTIONS FROM PRENTISS, MS: Travel Highway 13 N for 6.8 miles. Turn left onto Golden Pine Drive. The property will be on your left. [GOOGLE MAP LINK](#)



2010-2021  
AMERICA'S  
BEST  
BROKERAGES

*call me today!*

**DAVID BELDEN**, REALTOR®

DBelden@TomSmithLand.com

601.898.2772 **office** | 601.415.3884 **cell**



Expect More. Get More.

**TomSmithLandandHomes.com**

Information is believed to be accurate but not guaranteed.



## 91+/- Acres in Jefferson Davis County, MS

Have you been searching for a fun, turn-key business opportunity? If so, we need to take a ride to this 91+/- acre Jefferson Davis County, MS property! Set up and ready for new owners, this property is equipped with a 3 Bed/2 Bath, 1200 SF, furnished mobile home, over 40 RV hookups, functional restrooms with flushable toilets, and a 5,000 SF, 50x100 warehouse/workshop currently used as a concession stand and store with all concession stand equipment to remain. Two dirt race tracks are on the property, including the sizeable main track and a smaller practice track, excellent for warmups or smaller kids needing to practice. A bike washing station is also at the tracks so you can take care of all the dirt before returning home. There are several trails and three ponds making this property perfect for a multitude of recreational uses. The location is ideal, being only one hour from Hattiesburg, 75 minutes from Jackson, 2.5 hours from New Orleans, LA, and 4 hours from Memphis, TN. Buzz Belden to see Golden Pines Raceway today!



*call me today!*

**DAVID BELDEN**, REALTOR®  
DBelden@TomSmithLand.com  
601.898.2772 **office** | 601.415.3884 **cell**



**TomSmithLandandHomes.com**

Information is believed to be accurate but not guaranteed.





**DAVID BELDEN**, REALTOR®  
 DBelden@TomSmithLand.com  
 601.898.2772 office | 601.415.3884 cell



**TomSmithLandandHomes.com**

Information is believed to be accurate but not guaranteed.





**DAVID BELDEN**, REALTOR®  
 DBelden@TomSmithLand.com  
 601.898.2772 office | 601.415.3884 cell



**TomSmithLandandHomes.com**

Information is believed to be accurate but not guaranteed.





**DAVID BELDEN**, REALTOR®  
 DBelden@TomSmithLand.com  
 601.898.2772 office | 601.415.3884 cell



**TomSmithLandandHomes.com**

Information is believed to be accurate but not guaranteed.





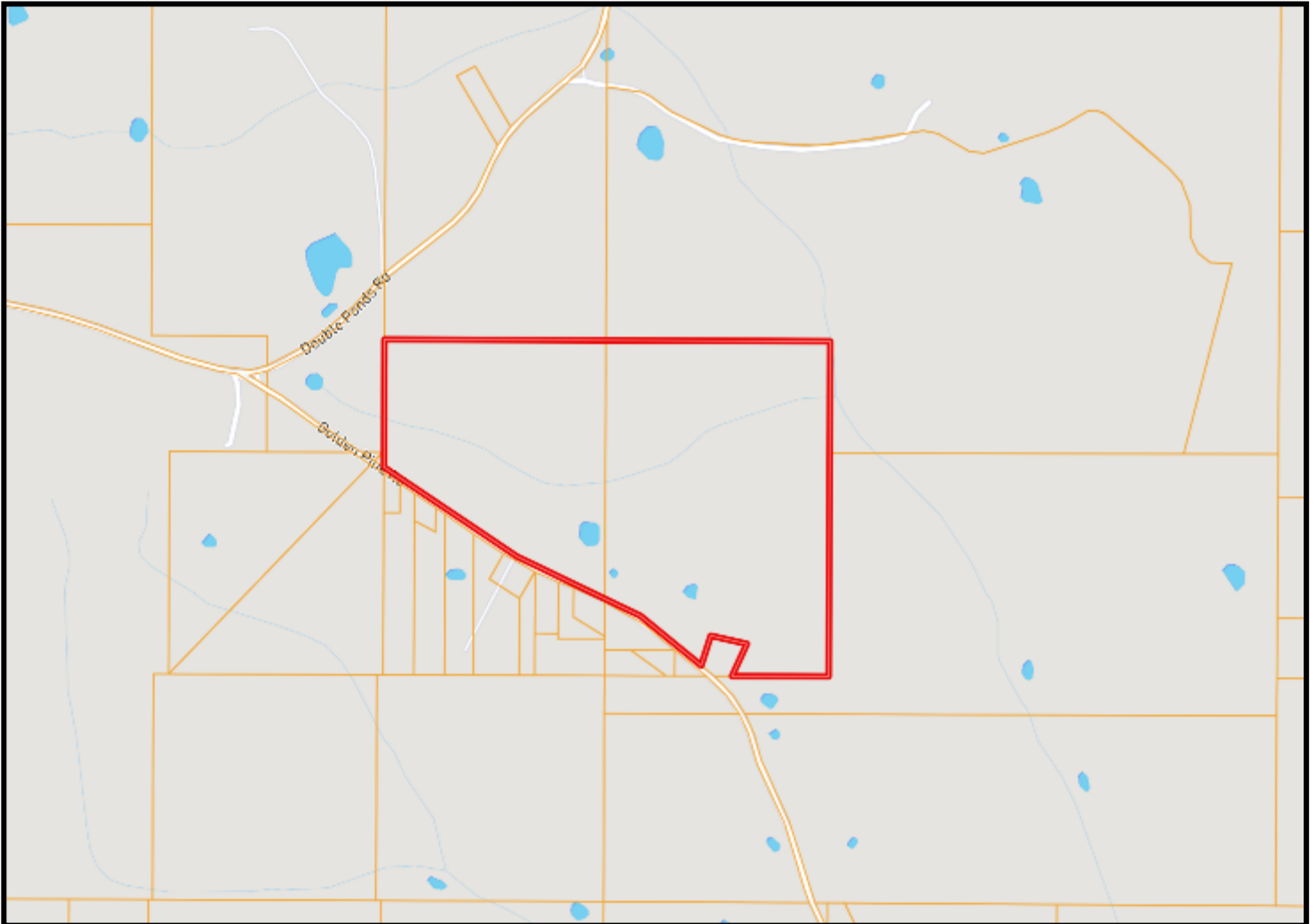
**DAVID BELDEN**, REALTOR®  
 DBelden@TomSmithLand.com  
 601.898.2772 office | 601.415.3884 cell



**TomSmithLandandHomes.com**

Information is believed to be accurate but not guaranteed.

# OWNERSHIP MAP



**DAVID BELDEN**, REALTOR®  
DBelden@TomSmithLand.com  
601.898.2772 office | 601.415.3884 cell



**TomSmithLandandHomes.com**

Information is believed to be accurate but not guaranteed.



# AERIAL MAP



[CLICK HERE FOR AN INTERACTIVE MAP](#)



**DAVID BELDEN**, REALTOR®  
DBelden@TomSmithLand.com  
601.898.2772 **office** | 601.415.3884 **cell**

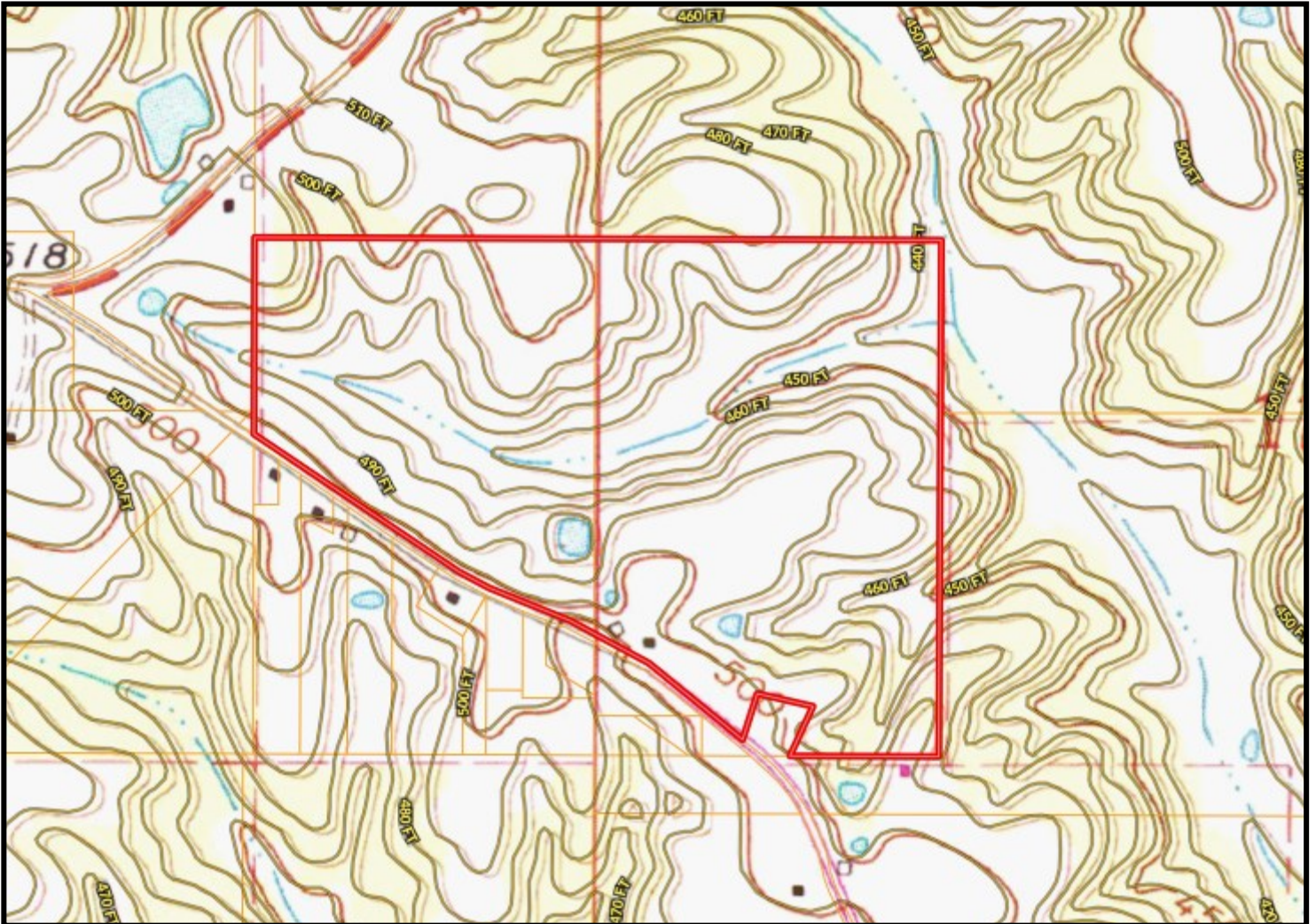


**TomSmithLandandHomes.com**

Information is believed to be accurate but not guaranteed.



# TOPO MAP



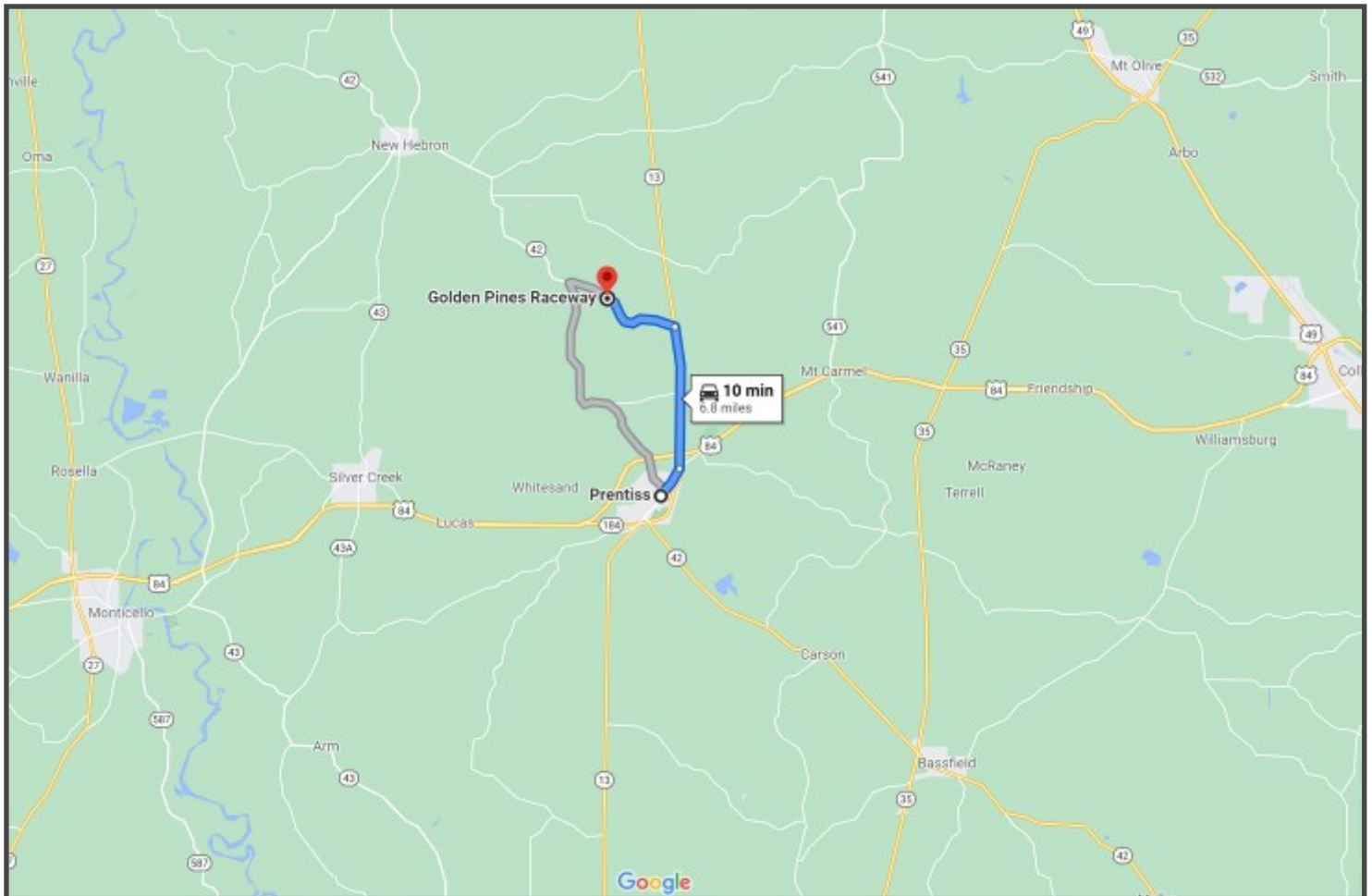
**DAVID BELDEN**, REALTOR®  
DBelden@TomSmithLand.com  
601.898.2772 office | 601.415.3884 cell



**TomSmithLandandHomes.com**

Information is believed to be accurate but not guaranteed.

# DIRECTIONAL MAP



DIRECTIONS FROM PRENTISS, MS: Travel Highway 13 N for 6.8 miles. Turn left onto Golden Pine Road. The property will be on your right. [GOOGLE MAP LINK](#)



*call me today!*

**DAVID BELDEN**, REALTOR®  
DBelden@TomSmithLand.com  
601.898.2772 **office** | 601.415.3884 **cell**



**TomSmithLandandHomes.com**

Information is believed to be accurate but not guaranteed.