

Steamboat Station

Secluded Tombigbee River Cabin in Sumter County, AL
1150 Toney Ave Epes, AL 35460



\$194,900



Views! Views! Views! Come take a look at this secluded cabin situated on .37+/- acres on the Tombigbee River in Sumter County, AL! Relax in the remodeled, turn-key cabin offering 963+/- square feet, three bedrooms, two full baths, custom walnut cabinets, gas fireplace, custom counters, and seclusion! Watch the boats pass by from your deck, newly built screen porch, or through the jalousie windows in the living room. Want to spend time on the water, head to the private boat ramp just a 1/4 mile away, or enjoy fishing from the pier on the riverbank. The home sits at the end of a gated, private drive approximately one hour from both Meridian, MS and Tuscaloosa, AL. The only thing missing from this property is YOU! Seller will provide Home Warranty. Call Walker Tranum to schedule a private showing!

Directions from the intersection of Highway 11 and Bluffport Road in Epes, AL Travel south on Bluffport road for 0.5 miles. Turn left on Port of Epes Hwy. and travel 2.6 miles. Turn left on Toney Avenue. Drive 1.1 miles to the gated entrance. 1150 Toney Avenue, Epes, AL 35460

[Click for Drone Video](#)



**WALKER
TRANUM**
REALTOR®

Office: 662.268.6333
Cell: 662.769.1442

Walker@TomSmithHomes.com



A Real Estate Expert You Can Trust

TomSmithLandandHomes.com

Information is believed to be accurate but not guaranteed.



Features:

- Riverfront Deck & Screen Porch
- Gated Private Drive
- River Facing Jalousie Windows
- Central Heat & Air
- Water Filtration System
- Whole House Winterizing System
- Outdoor Entertainment Area
- Custom Walnut Kitchen Island
- Public Maintained Road
- 2 Accessible Boat Ramps
- 500 Gallon Propane Tank
- Pre-Wired for Cable
- Exposed Beam Ceilings
- Fishing Pier

[Click for Drone Video](#)



**WALKER
TRANUM**
REALTOR®

Office: 662.268.6333
Cell: 662.769.1442

Walker@TomSmithHomes.com



A Real Estate Expert You Can Trust

TomSmithLandandHomes.com

Information is believed to be accurate but not guaranteed.





**WALKER
TRANUM**
REALTOR®

Office: 662.268.6333
Cell: 662.769.1442

Walker@TomSmithHomes.com



A Real Estate Expert You Can Trust

TomSmithLandandHomes.com

Information is believed to be accurate but not guaranteed.





**WALKER
TRANUM**

REALTOR®

Office: 662.268.6333

Cell: 662.769.1442

Walker@TomSmithHomes.com

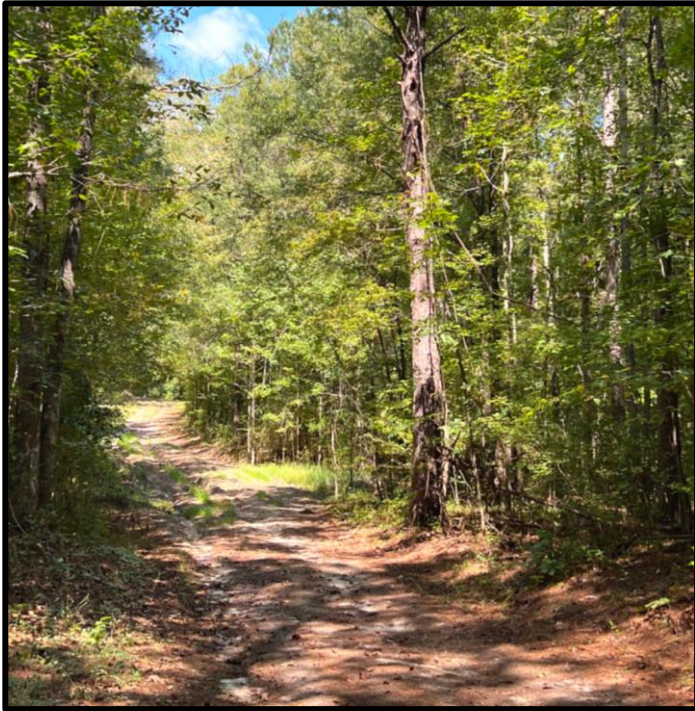
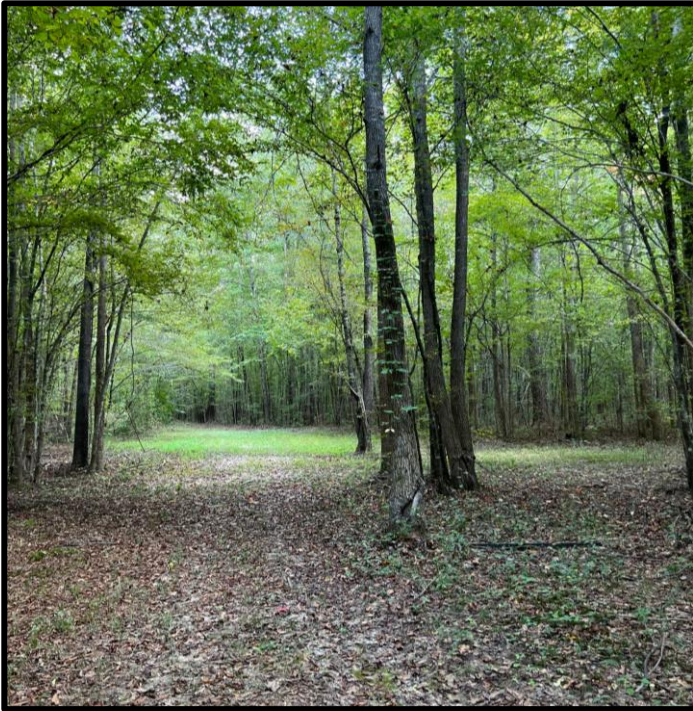


A Real Estate Expert You Can Trust

TomSmithLandandHomes.com

Information is believed to be accurate but not guaranteed.

2011-2023
BEST
BROKERAGES



**WALKER
TRANUM**
REALTOR®

Office: 662.268.6333
Cell: 662.769.1442

Walker@TomSmithHomes.com



A Real Estate Expert You Can Trust

TomSmithLandandHomes.com

Information is believed to be accurate but not guaranteed.





**STEVE
MARTENS**
REALTOR®

Office: 601.898.2772
Cell: 601.573.2962

Steve@TomSmithLand.com



A Real Estate Expert You Can Trust

TomSmithLandandHomes.com

Information is believed to be accurate but not guaranteed.



Ownership Map



**WALKER
TRANUM**
REALTOR®

Office: 662.268.6333
Cell: 662.769.1442

Walker@TomSmithHomes.com



A Real Estate Expert You Can Trust

TomSmithLandandHomes.com

Information is believed to be accurate but not guaranteed.



Aerial Map



[CLICK HERE FOR AN INTERACTIVE MAP](#)



**WALKER
TRANUM**
REALTOR®

Office: 662.268.6333
Cell: 662.769.1442

Walker@TomSmithHomes.com



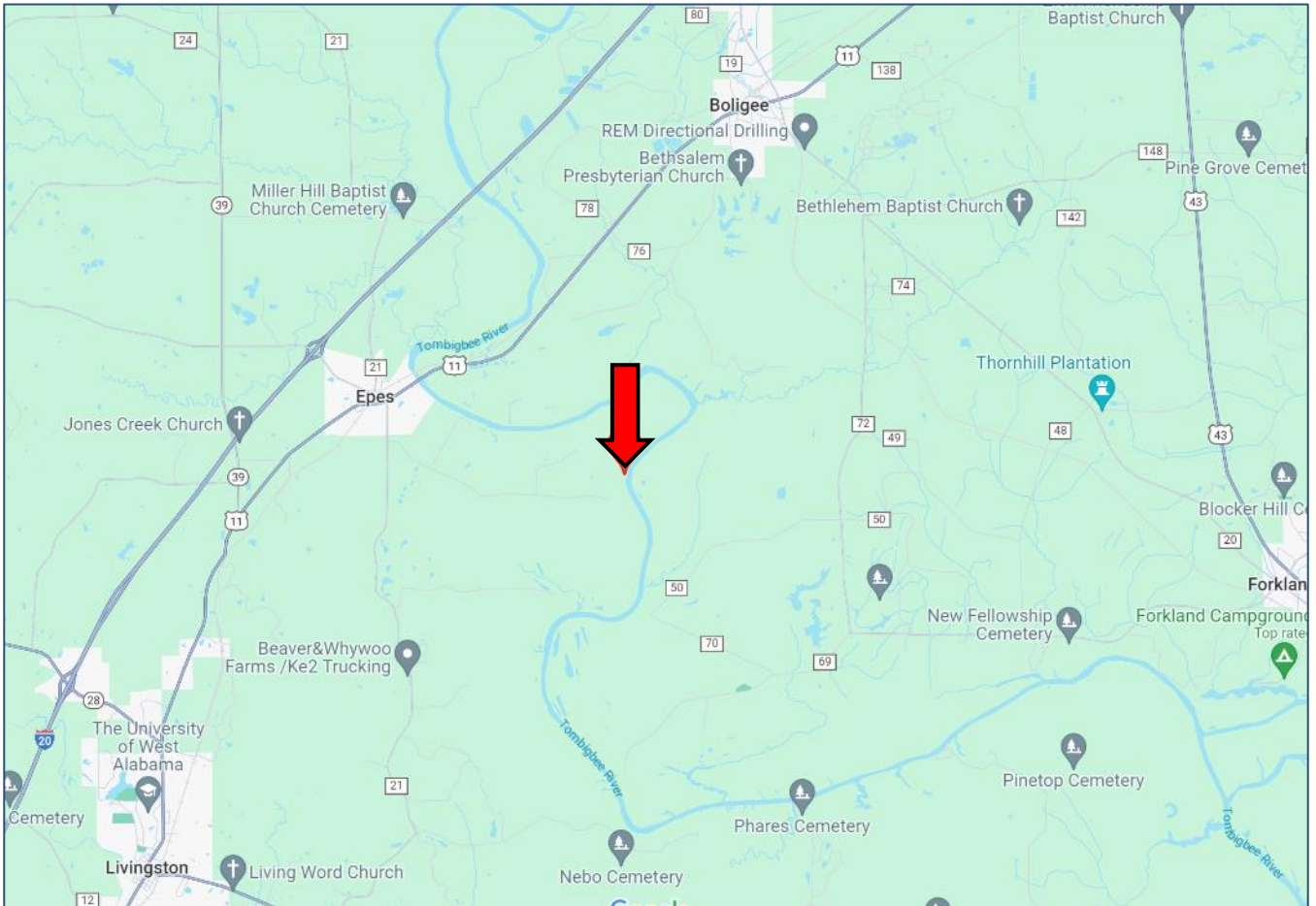
A Real Estate Expert You Can Trust

TomSmithLandandHomes.com

Information is believed to be accurate but not guaranteed.



Directional Map



Directions from the intersection of Highway 11 and Bluffport Road in Epes, AL:
Travel south on Bluffport road for 0.5 miles. Turn left on Port of Epes Hwy. and
travel 2.6 miles. Turn left on Toney Avenue. Drive 1.1 miles to the gated entrance.
1150 Toney Avenue, Epes, AL 35460 – Google Map Link



WALKER
TRANUM
REALTOR®

Office: 662.268.6333
Cell: 662.769.1442

Walker@TomSmithHomes.com



A Real Estate Expert You Can Trust

TomSmithLandandHomes.com

Information is believed to be accurate but not guaranteed.

