

Steamboat Station

Secluded Tombigbee River Cabin in Sumter County
1150 Toney Ave Epes, AL 35460



Views! Views! Views! Come take a look at this secluded cabin situated on .37+/- acres on the Tombigbee River in Sumter County, AL! Relax in the remodeled, turn-key cabin offering 963+/- square feet, three bedrooms, two full baths, custom walnut cabinets, gas fireplace, custom counters, and seclusion! Watch the boats pass by from your deck, newly built screen porch, or through the jalousie windows in the living room. Want to spend time on the water, head to the private boat ramp just a 1/4 mile away, or enjoy fishing from the pier on the riverbank. The home sits at the end of a gated, private drive approximately one hour from both Meridian, MS and Tuscaloosa, AL. The only thing missing from this property is YOU! Seller will provide Home Warranty. Call John DelPapa to schedule a private showing!

Directions from the intersection of Highway 11 and Bluffport Road in Epes, AL Travel south on Bluffport road for 0.5 miles and turn left on Port of Epes Hwy. Drive 2.6 miles and turn left on Toney Avenue. Drive 1.1 miles to the gated entrance. 1150 Toney Avenue, Epes, AL 35460

[Click for Drone Video](#)

*Call me
today!*

JOHN DELPAPA, REALTOR®
John@TomSmithLand.com
662.268.6333 office | 662.788.2455 cell
Licensed in MS & AL | MS Registered Forestor

**Tom
Smith
LAND AND
HOMES**
Expect More. Get More.

TomSmithLandandHomes.com

Information is believed to be accurate but not guaranteed.

LandReport
2011-2022
AMERICA'S
BEST
BROKERAGES



Features

- Riverfront Deck & Screen Porch
- Gated Private Drive
- River Facing Jalousie Windows
- Central Heat & Air
- Water Filtration System
- Whole House Winterizing System
- Outdoor Entertainment Area
- Custom Walnut Kitchen Island
- Public Maintained Road
- 2 Accessible Boat Ramps
- 500 gallon Propane Tank
- Pre-Wired for Cable
- Exposed Beam Ceilings
- Fishing Pier

[Click for Drone Video](#)



*Call me
today!*



JOHN DELPAPA, REALTOR®

John@TomSmithLand.com

662.268.6333 **office** | 662.788.2455 **cell**

Licensed in MS & AL | MS Registered Forestor

Expect More. Get More.

TomSmithLandandHomes.com

Information is believed to be accurate but not guaranteed.





Call me today!

JOHN DELPAPA, REALTOR®
John@TomSmithLand.com
662.268.6333 office | 662.788.2455 cell
Licensed in MS & AL | MS Registered Forestor



Expect More. Get More.

TomSmithLandandHomes.com

Information is believed to be accurate but not guaranteed.

LandReport
2011-2022
AMERICA'S
BEST
BROKERAGES



JOHN DELPAPA, REALTOR®

John@TomSmithLand.com

662.268.6333 office | 662.788.2455 cell

Licensed in MS & AL | MS Registered Forestor

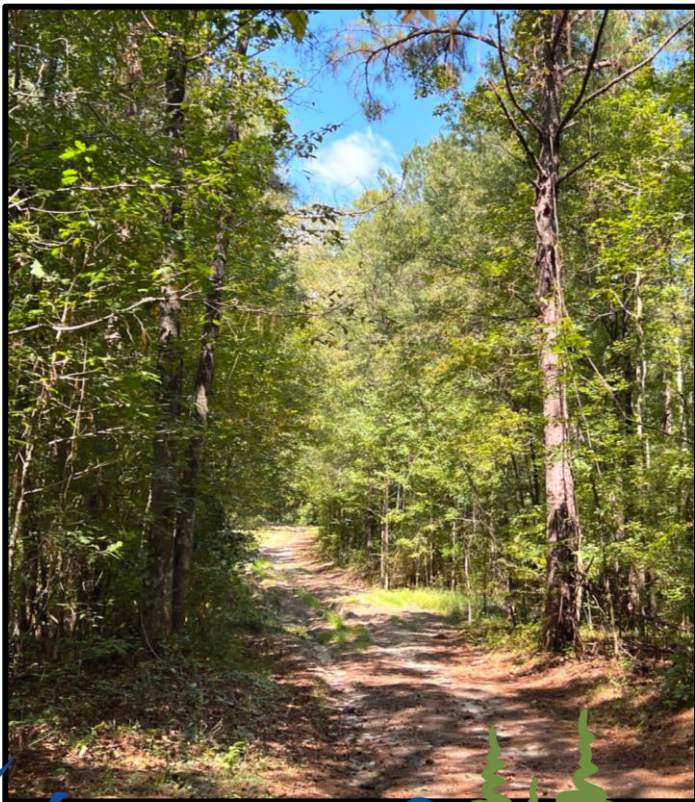


Expect More. Get More.

TomSmithLandandHomes.com

Information is believed to be accurate but not guaranteed.





Call me today!

JOHN DELPAPA, REALTOR®
John@TomSmithLand.com
662.268.6333 office | 662.788.2455 cell
Licensed in MS & AL | MS Registered Forestor

Tom Smith
LAND AND HOMES
Expect More. Get More.



TomSmithLandandHomes.com

Information is believed to be accurate but not guaranteed.



Call me today!

JOHN DELPAPA, REALTOR®
John@TomSmithLand.com
662.268.6333 office | 662.788.2455 cell
Licensed in MS & AL | MS Registered Forestor

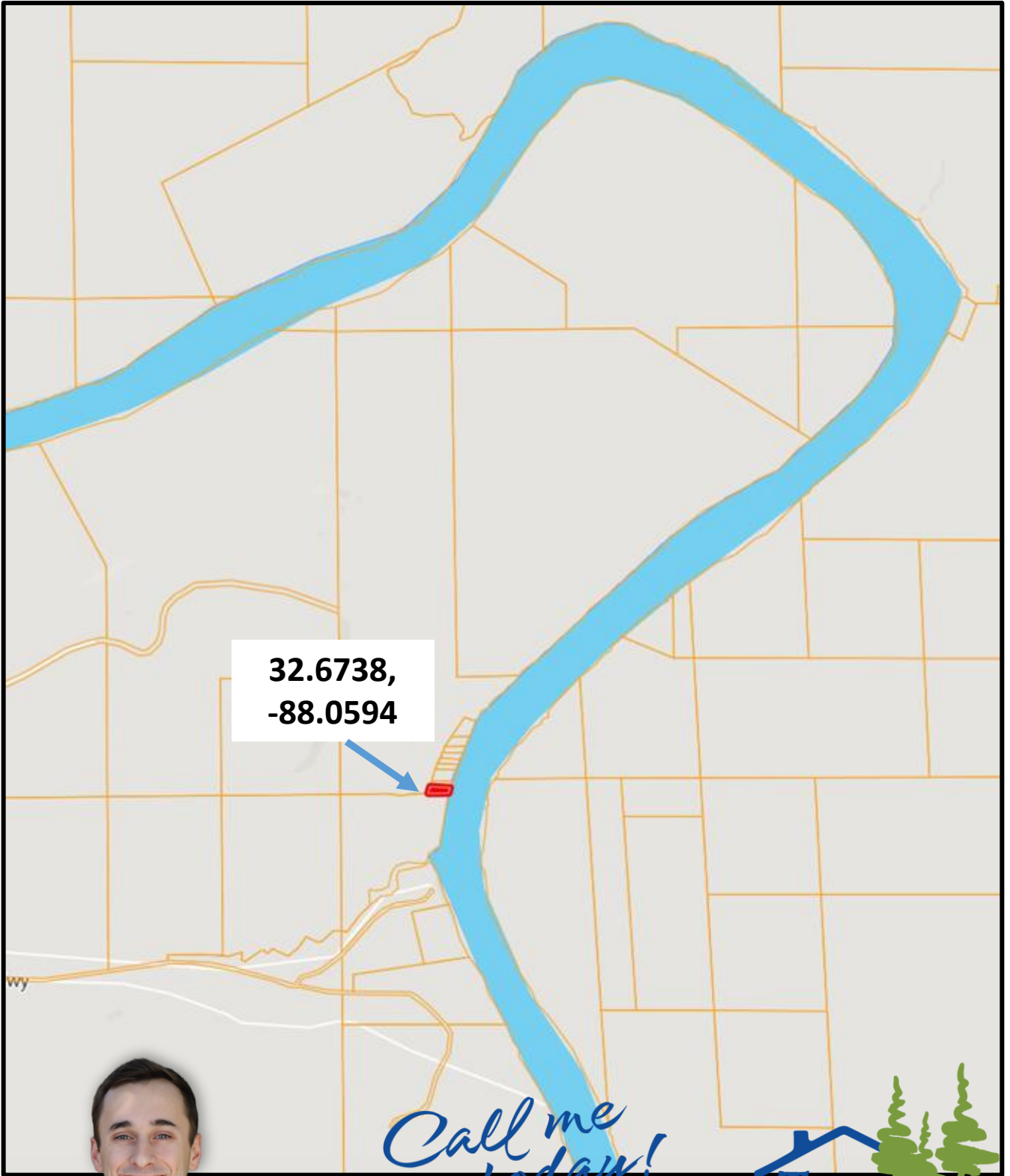


TomSmithLandandHomes.com

Information is believed to be accurate but not guaranteed.

LandReport
2011-2022
AMERICA'S
BEST
BROKERAGES

Ownership Map



32.6738,
-88.0594

*Call me
today!*



JOHN DELPAPA, REALTOR®
John@TomSmithLand.com
662.268.6333 office | 662.788.2455 cell
Licensed in MS & AL | MS Registered Forester

TomSmithLandandHomes.com

Information is believed to be accurate but not guaranteed.

LandReport
2011-2022
AMERICA'S
BEST
BROKERAGES



Aerial Photograph



32.6738,
-88.0594



Potential
Availability

.37+/- Acres



*Call me
today!*

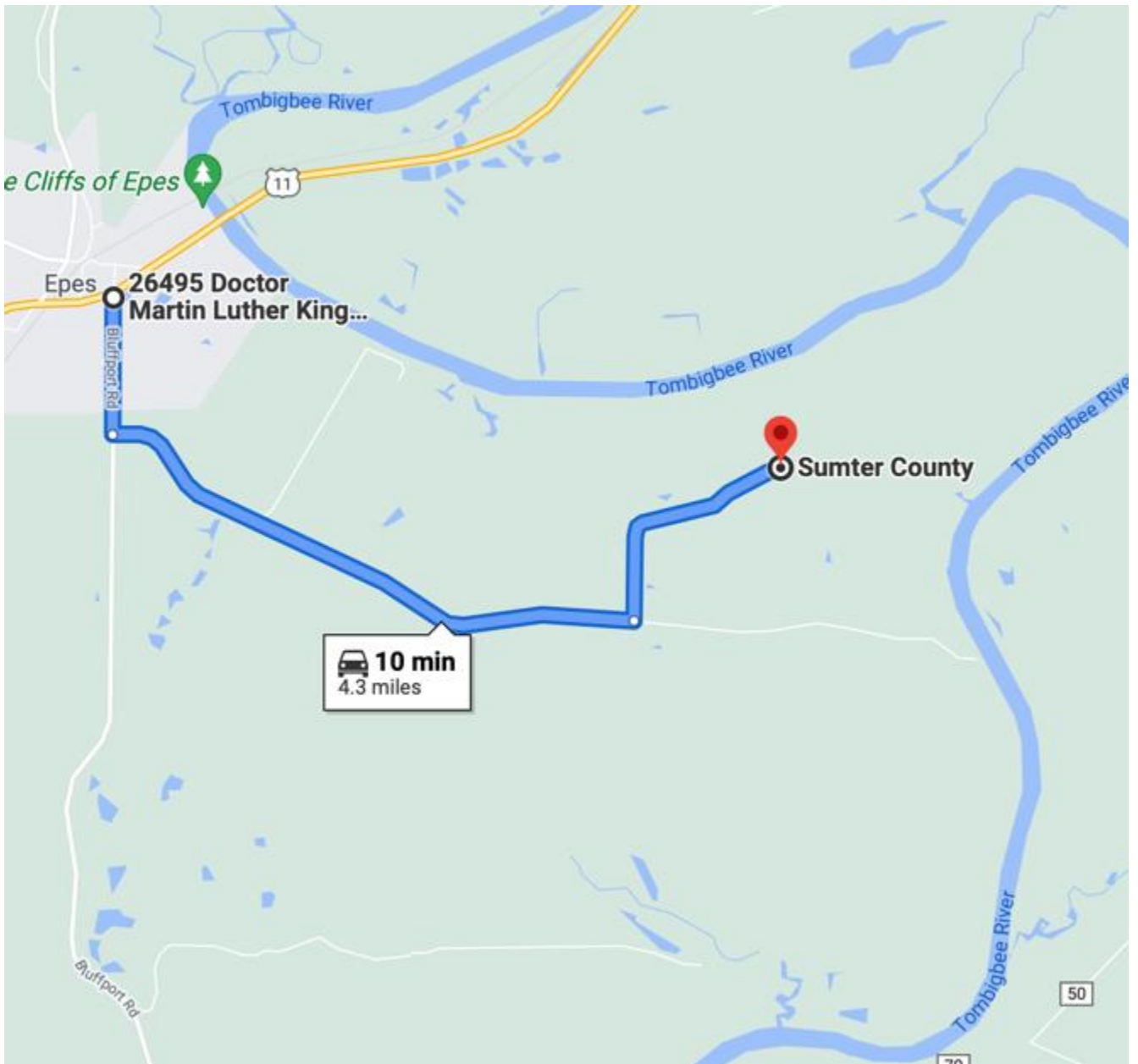
JOHN DELPAPA, REALTOR®
John@TomSmithLand.com
662.268.6333 office | 662.788.2455 cell
Licensed in MS & AL | MS Registered Forestor



TomSmithLandandHomes.com

Information is believed to be accurate but not guaranteed.

Directional Map



Directions from the intersection of Highway 11 and Bluffport Road in Epes, AL Travel south on Bluffport road for 0.5 miles and turn left on Port of Epes Hwy. Drive 2.6 miles and turn left on Toney Avenue. Drive 1.1 miles to the gated entrance. 1150 Toney Avenue, Epes, AL 35460



Call me today!

JOHN DELPAPA, REALTOR®
John@TomSmithLand.com
662.268.6333 office | 662.788.2455 cell
Licensed in MS & AL | MS Registered Forestor



TomSmithLandandHomes.com

Information is believed to be accurate but not guaranteed.