

# Cute Farmhouse in Cleveland, MS

## Bolivar County



1113 College Street Cleveland, MS

\$245,000

Looking for a home in Cleveland, MS? Take a look at this 2,182+/- square foot home featuring four bedrooms, three bathrooms, two master suites, a walk-in laundry room, and gorgeous dining room. This home has original hardwood floors throughout most of the house, a two car carport, and fenced-in backyard. The home is conveniently located to everything Cleveland has to offer! Act fast!! Contact Tracey or Amber to schedule a private showing!

Directions from the corner of HWY 61 and HWY 8 in Cleveland, MS: Travel west on HWY 8 toward Chrisman Avenue for approximately 1 mile. Turn left onto N. 5th Ave and in 0.6 miles turn right onto College Street. The



**TRACEY BELL**, MANAGING BROKER  
Tracey@TomSmithLand.com  
662.441.2500 office | 662.719.4720 cell



*Call us today!*



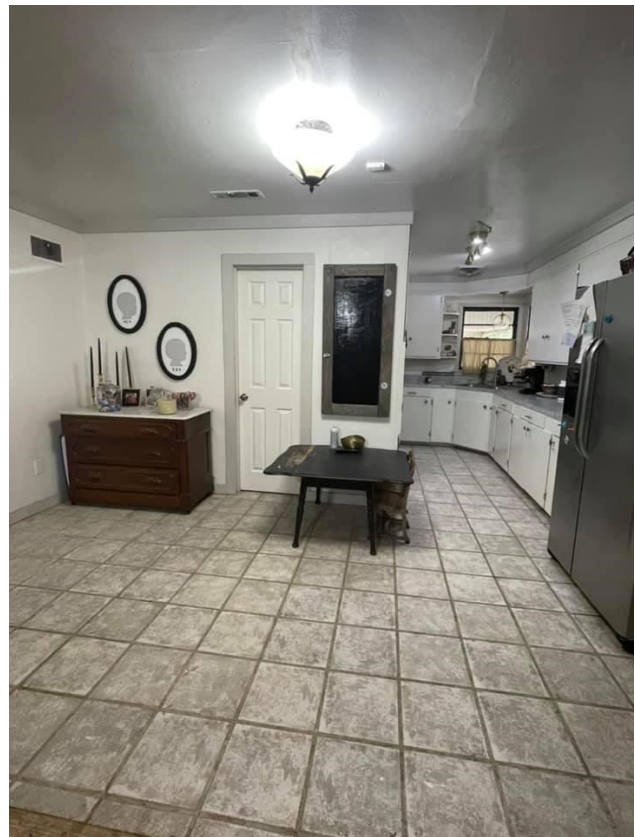
**AMBER SMITH**, REALTOR®  
Amber@TomSmithLand.com  
662.441.2500 office | 662.719.1978 cell

# TomSmithLandandHomes.com

Information is believed to be accurate but not guaranteed.







**TRACEY BELL**, MANAGING BROKER  
Tracey@TomSmithLand.com  
662.441.2500 office | 662.719.4720 cell



Expect More. Get More.

*Call us today!*



**AMBER SMITH**, REALTOR®  
Amber@TomSmithLand.com  
662.441.2500 office | 662.719.1978 cell

**TomSmithLandandHomes.com**

Information is believed to be accurate but not guaranteed.







**TRACEY BELL**, MANAGING BROKER  
Tracey@TomSmithLand.com  
662.441.2500 office | 662.719.4720 cell



*Call us today!*



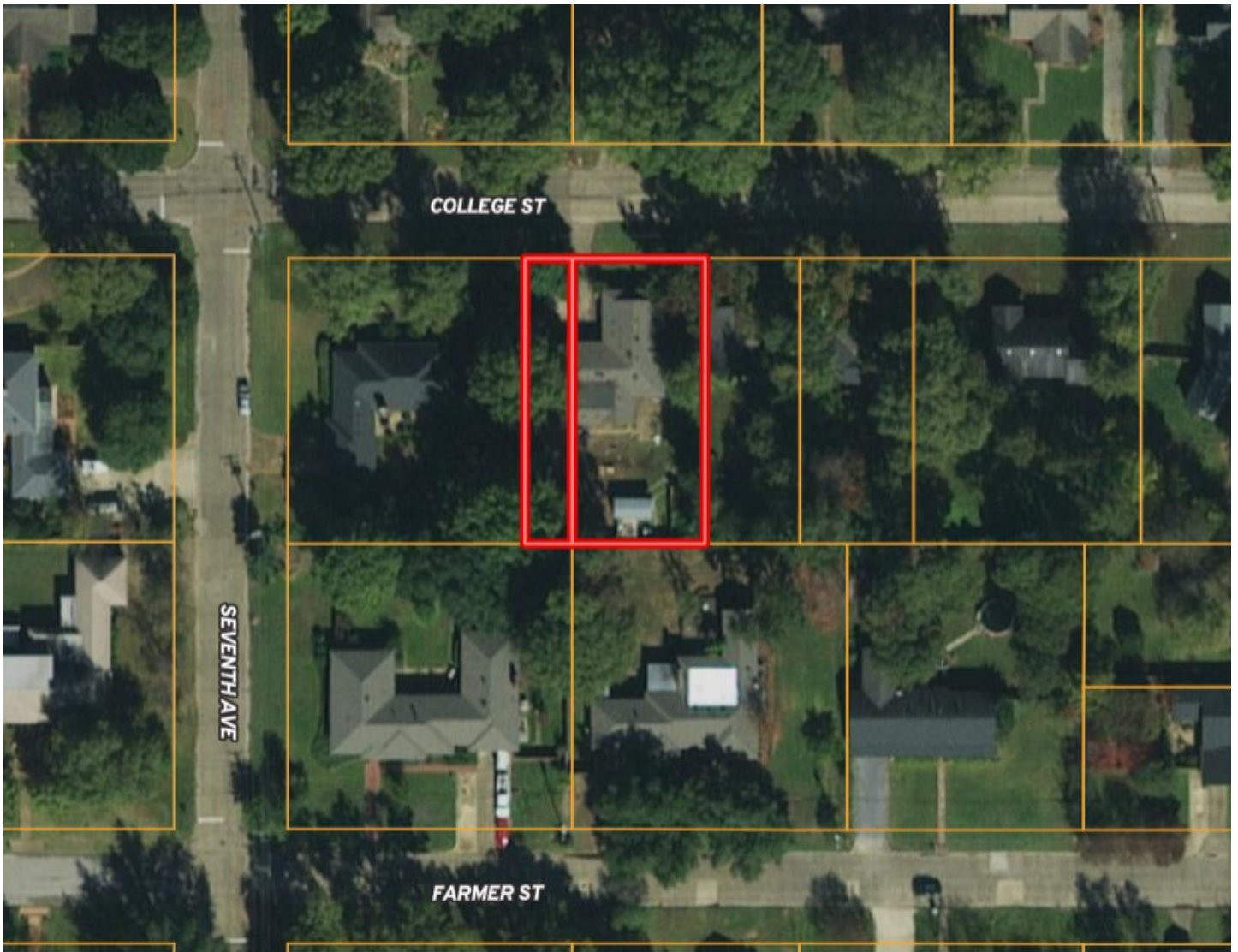
**AMBER SMITH**, REALTOR®  
Amber@TomSmithLand.com  
662.441.2500 office | 662.719.1978 cell

**TomSmithLandandHomes.com**

Information is believed to be accurate but not guaranteed.



# AERIAL MAP



**TRACEY BELL**, MANAGING BROKER  
Tracey@TomSmithLand.com  
662.441.2500 office | 662.719.4720 cell



Expect More. Get More.

*Call us today!*



**AMBER SMITH**, REALTOR®  
Amber@TomSmithLand.com  
662.441.2500 office | 662.719.1978 cell

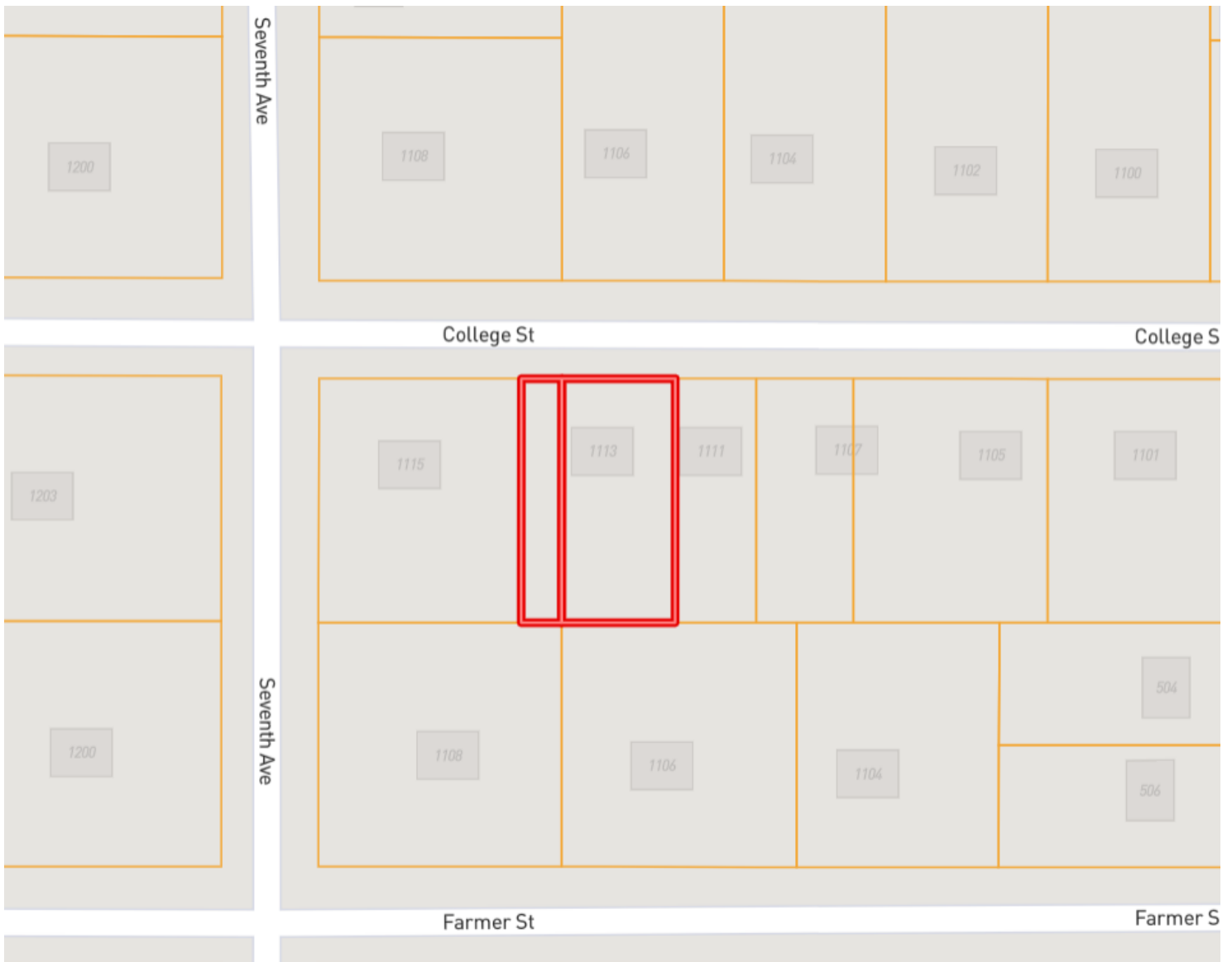
**TomSmithLandandHomes.com**

Information is believed to be accurate but not guaranteed.





# OWNERSHIP MAP



**TRACEY BELL**, MANAGING BROKER  
 Tracey@TomSmithLand.com  
 662.441.2500 office | 662.719.4720 cell



Expect More. Get More.

*Call us today!*



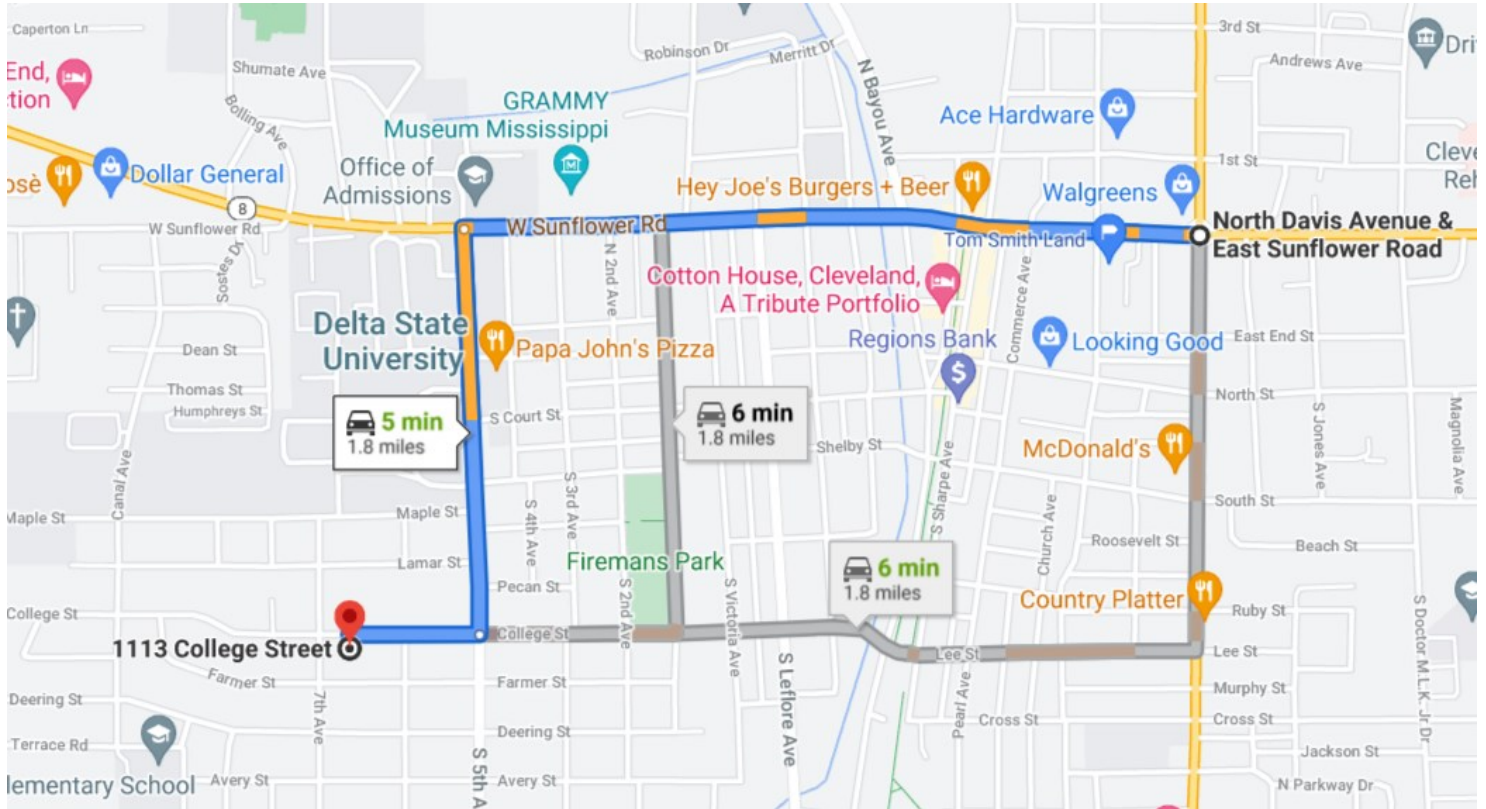
**AMBER SMITH**, REALTOR®  
 Amber@TomSmithLand.com  
 662.441.2500 office | 662.719.1978 cell

**TomSmithLandandHomes.com**

Information is believed to be accurate but not guaranteed.



# DIRECTIONAL MAP



## 1113 College Street Cleveland, MS 38732

Directions from the corner of HWY 61 and HWY 8 in Cleveland, MS: Travel west on HWY 8 toward Chrisman Avenue for approximately 1 mile. Turn left onto N. 5th Ave and in 0.6 miles turn right onto College Street. The destination will be on the left.



**TRACEY BELL**, MANAGING BROKER  
Tracey@TomSmithLand.com  
662.441.2500 office | 662.719.4720 cell



Expect More. Get More.

*Call us today!*



**AMBER SMITH**, REALTOR®  
Amber@TomSmithLand.com  
662.441.2500 office | 662.719.1978 cell

# TomSmithLandandHomes.com

Information is believed to be accurate but not guaranteed.

