

7.46 +/- Acre Development Tract

Bolivar County, MS



Hwy 8 East Cleveland, MS

\$119,000

Are you searching for land in a PRIME location in Cleveland, MS? This 7.46+/- acre development tract is just east of Bolivar Medical Hospital and offers frontage on Hwy 8 and Smith Road. There is water and electricity nearby as well as septic for sewer. The property is perfect for your new home OR business! For more details on this "Priced to Sell" tract, contact Tracey today!

Directions from the corner of HWY 61 and HWY 8 in Cleveland, MS: Travel east on Hwy 8 for approximately 1.4 miles, (pass the Dollar General). Turn left onto Smith Road and continue for about 0.5 miles. The property is on the right.



call me today!

TRACEY BELL, MANAGING BROKER

Tracey@TomSmithLand.com

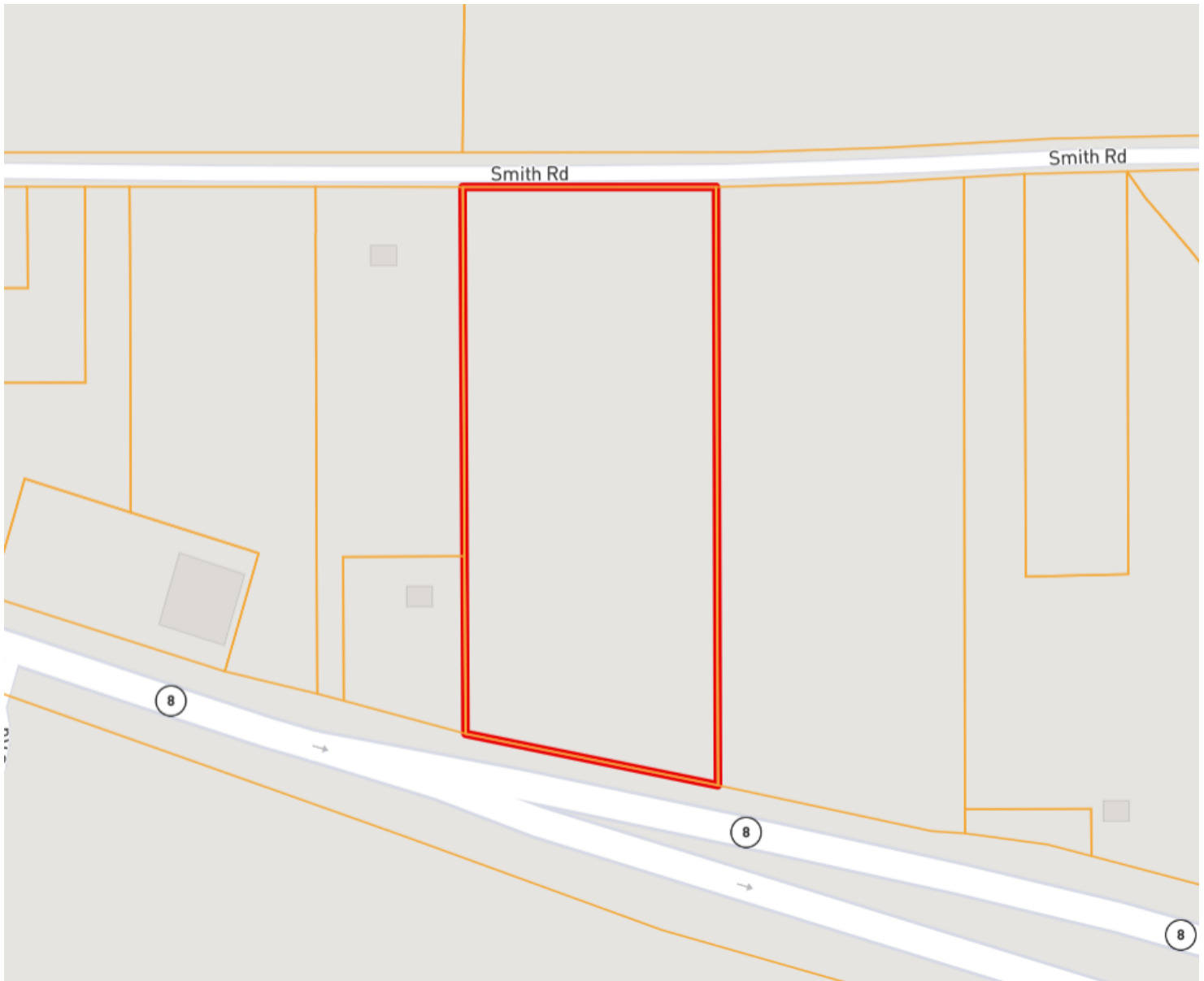
662.441.2500 **office** | 662.719.4720 **cell**



TomSmithLandandHomes.com

Information is believed to be accurate but not guaranteed.

OWNERSHIP MAP



call me today!

TRACEY BELL, MANAGING BROKER

Tracey@TomSmithLand.com

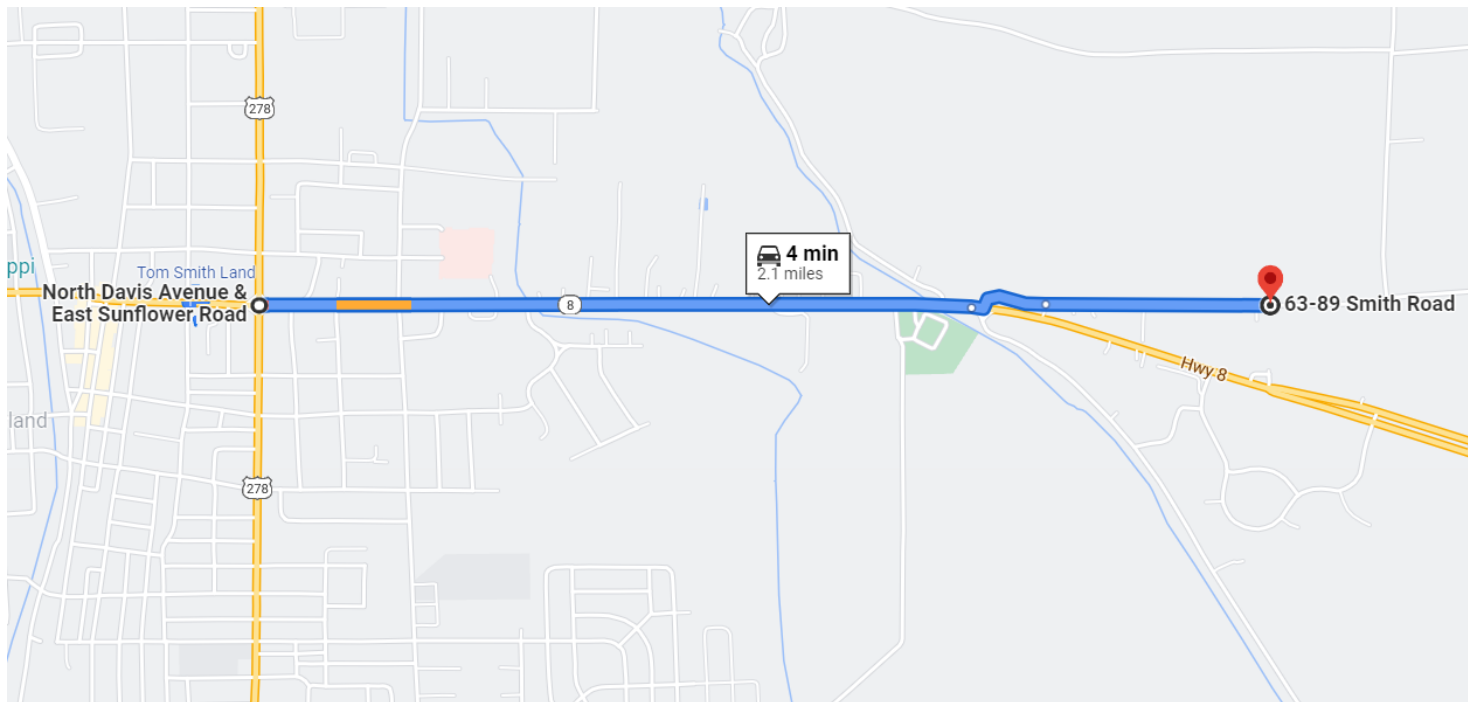
662.441.2500 **office** | 662.719.4720 **cell**



TomSmithLandandHomes.com

Information is believed to be accurate but not guaranteed.

OWNERSHIP MAP



Directions from the corner of HWY 61 and HWY 8 in Cleveland, MS: Travel east on Hwy 8 for approximately 1.4 miles, (pass the Dollar General). Turn left onto Smith Road and continue for about 0.5 miles. The property is on the right.



call me today!

TRACEY BELL, MANAGING BROKER

Tracey@TomSmithLand.com

662.441.2500 **office** | 662.719.4720 **cell**



Expect More. Get More.

TomSmithLandandHomes.com

Information is believed to be accurate but not guaranteed.