

1.2 +/- Acre Commercial Lot in Indianola Sunflower County, MS



Hwy 82 Indianola, MS

\$179,000

Are you searching for a PRIME location in Indianola, MS for your business? Take a look at this 1.2+/- acre lot situated on the west side of town, adjacent to Garrett Furniture. The Sunflower County lot offers frontage on Hwy 82 and is priced to SELL! For more details, contact Tracey Bell or Emerson Lovelace! ACT FAST!

Directions from the Corner of HWY 448 and HWY 82 in Indianola, MS: Travel west on US 82W towards Heathman Avenue for approximately 1.3 miles and the destination will be on the left.



TRACEY BELL, MANAGING BROKER
Tracey@TomSmithLand.com
662.441.2500 office | 662.719.4720 cell



Call us today!



EMERSON LOVELACE, REALTOR®
Emerson@TomSmithLand.com
662.441.2500 office | 601.715.3302 cell

TomSmithLandandHomes.com

Information is believed to be accurate but not guaranteed.



AERIAL MAP



[Click for Interactive Map](#)



TRACEY BELL, MANAGING BROKER
Tracey@TomSmithLand.com
662.441.2500 office | 662.719.4720 cell



Expect More. Get More.

Call us today!



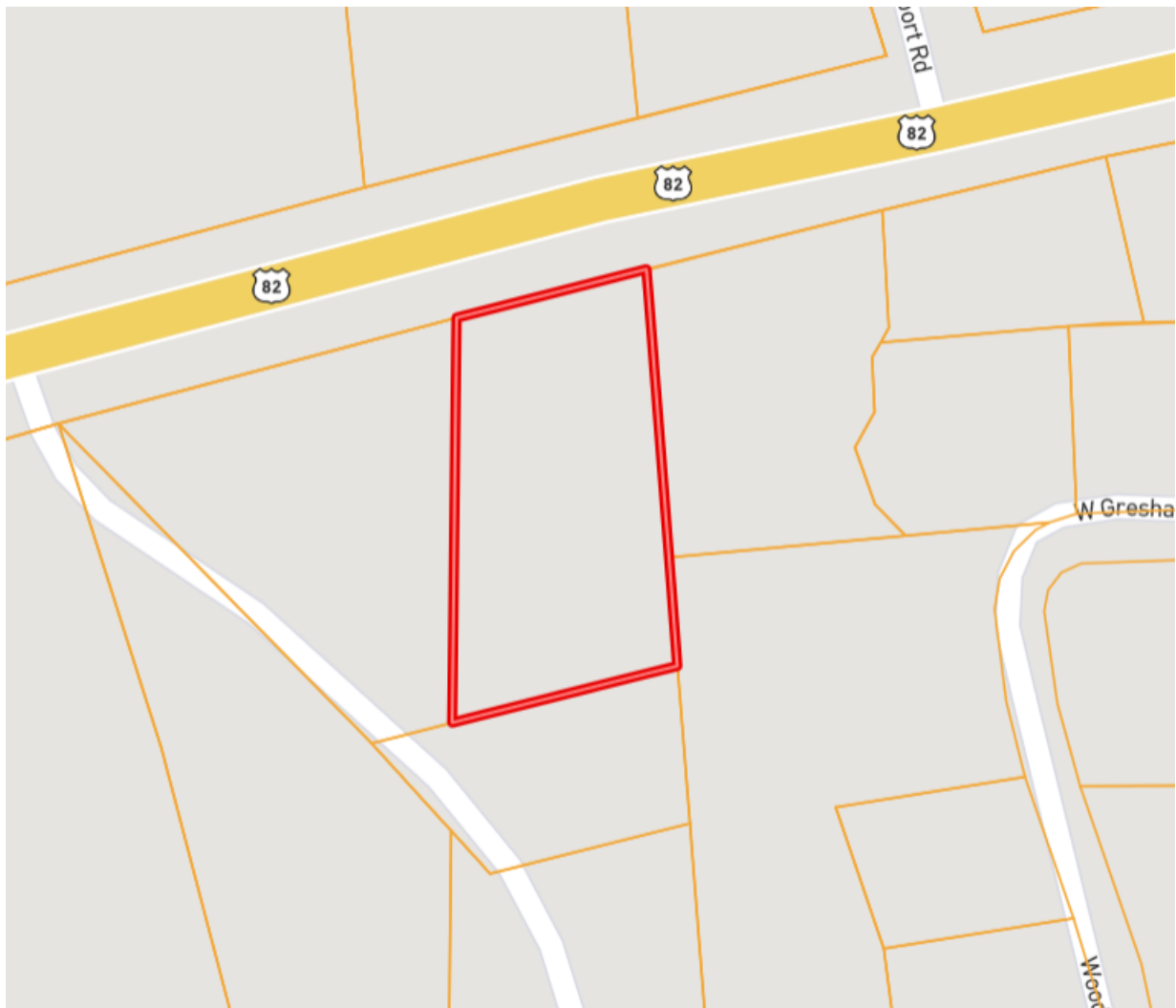
EMERSON LOVELACE, REALTOR®
Emerson@TomSmithLand.com
662.441.2500 office | 601.715.3302 cell

TomSmithLandandHomes.com

Information is believed to be accurate but not guaranteed.



OWNERSHIP MAP



TRACEY BELL, MANAGING BROKER
Tracey@TomSmithLand.com
662.441.2500 office | 662.719.4720 cell



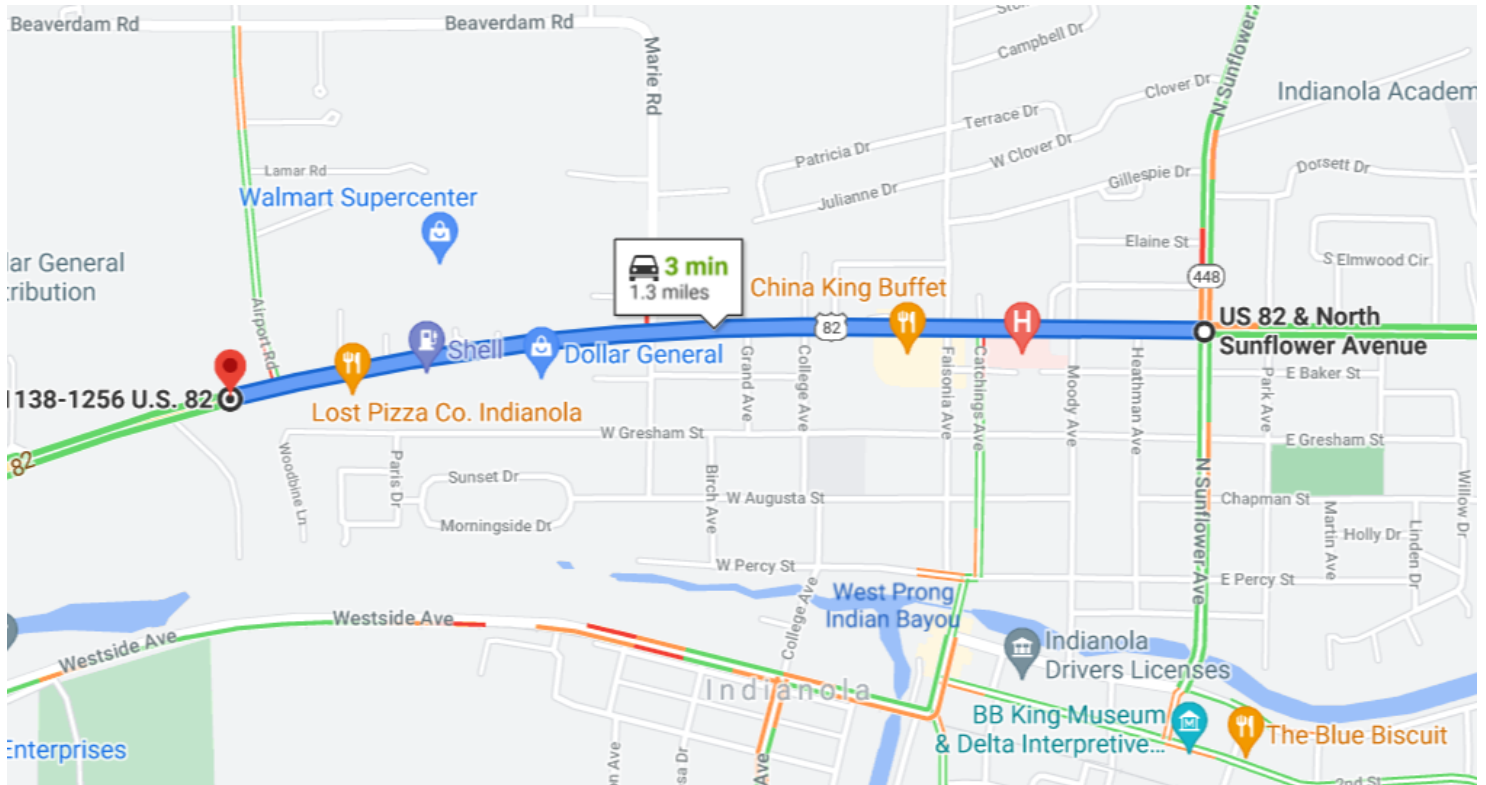
EMERSON LOVELACE, REALTOR®
Emerson@TomSmithLand.com
662.441.2500 office | 601.715.3302 cell

TomSmithLandandHomes.com

Information is believed to be accurate but not guaranteed.



OWNERSHIP MAP



Directions from the Corner of HWY 448 and HWY 82 in Indianola, MS: Travel west on US 82W towards Heathman Avenue for approximately 1.3 miles and the destination will be on the left.



TRACEY BELL, MANAGING BROKER
Tracey@TomSmithLand.com
662.441.2500 office | 662.719.4720 cell



Expect More. Get More.

Call us today!



EMERSON LOVELACE, REALTOR®
Emerson@TomSmithLand.com
662.441.2500 office | 601.715.3302 cell

TomSmithLandandHomes.com

Information is believed to be accurate but not guaranteed.

