

## 3 Bedroom, 2 Bath HOME IN FRANKLIN COUNTY, MISSISSIPPI



**\$139,000**

Take a look at this wonderful home in Franklin County! This three bedroom, two bath home has been renovated to include a large kitchen with granite countertops, wide fridge, ceramic wood look flooring, recessed lighting, and updated flooring in the living room. This home lies on almost an acre. There is a screened in porch, perfect for entertaining! The master bathroom includes a separate bath and shower, with a huge walk in closet! The wood shutters in the kitchen and living room add so much character to the home. Both bathrooms have also been renovated. Call Trinity Webb for a showing today!

**Directions from I-55 in Summit, MS: Travel west on US-98W for 23.6 miles, the property will be on the left at 5424 US-98W, Meadville MS.**



*call me today!*

**TRINITY WEBB**, REALTOR®

Trinity@TomSmithHomes.com

601.990.5070 office | 769.218.7860 cell



Expect More. Get More.

**TomSmithLandandHomes.com**

Information is believed to be accurate but not guaranteed.



*call me today!*

LandReport  
2010-2021  
AMERICA'S  
BEST  
BROKERAGES

**TRINITY WEBB**, REALTOR®

Trinity@TomSmithHomes.com

601.990.5070 office | 769.218.7860 cell

**Tom  
Smith  
LAND AND  
HOMES**

Expect More. Get More.

**TomSmithLandandHomes.com**

Information is believed to be accurate but not guaranteed.



LandReport  
2010-2021  
AMERICA'S  
BEST  
BROKERAGES

*call me today!*

**TRINITY WEBB**, REALTOR®

Trinity@TomSmithHomes.com

601.990.5070 office | 769.218.7860 cell

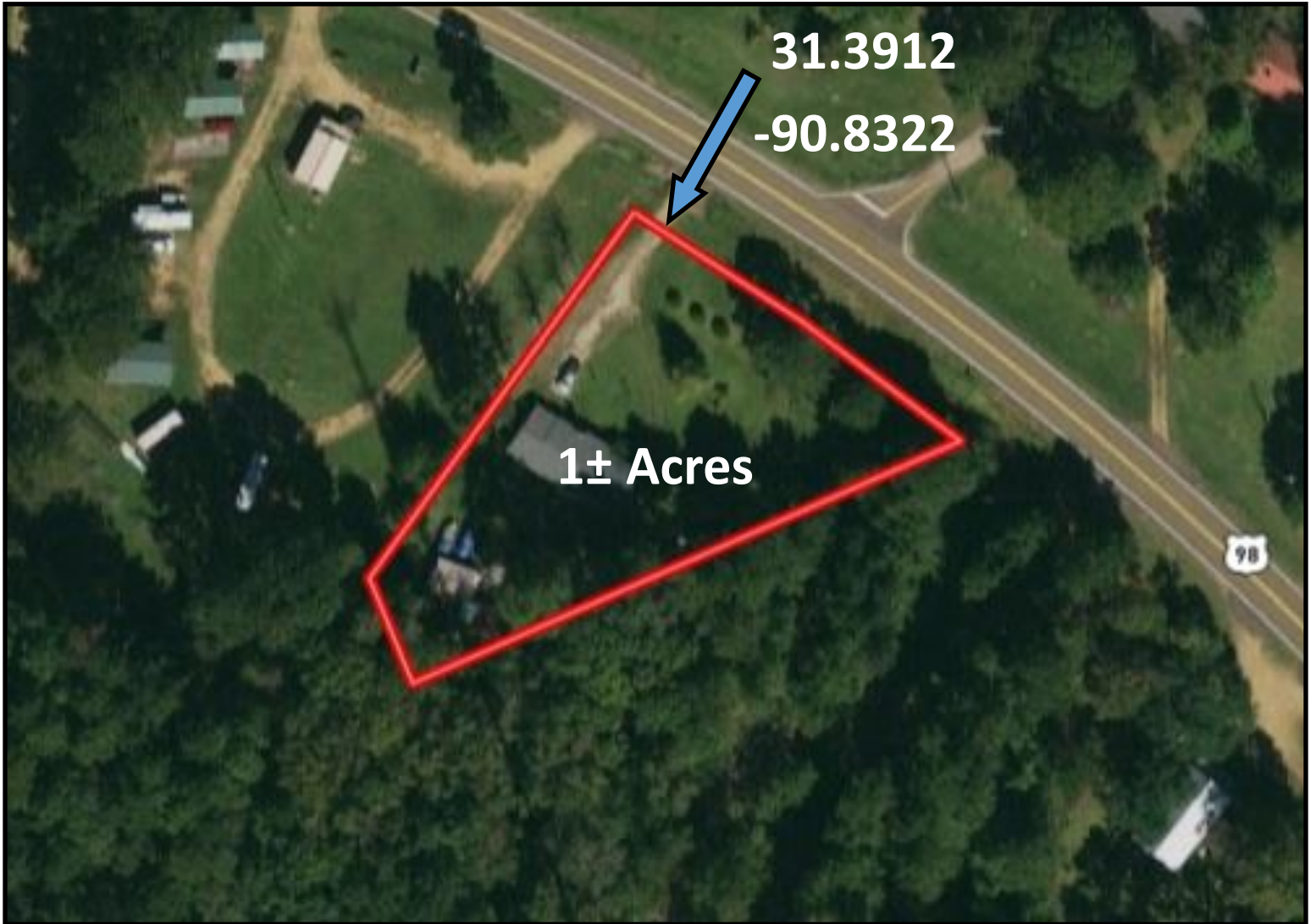


Expect More. Get More.

**TomSmithLandandHomes.com**

Information is believed to be accurate but not guaranteed.

# AERIAL MAP



*call me today!*

LandReport  
2010-2021  
AMERICA'S  
BEST  
BROKERAGES

**TRINITY WEBB**, REALTOR®  
Trinity@TomSmithHomes.com  
601.990.5070 office | 769.218.7860 cell



**TomSmithLandandHomes.com**

Information is believed to be accurate but not guaranteed.

# OWNERSHIP MAP



*call me today!*

**TRINITY WEBB**, REALTOR®

Trinity@TomSmithHomes.com

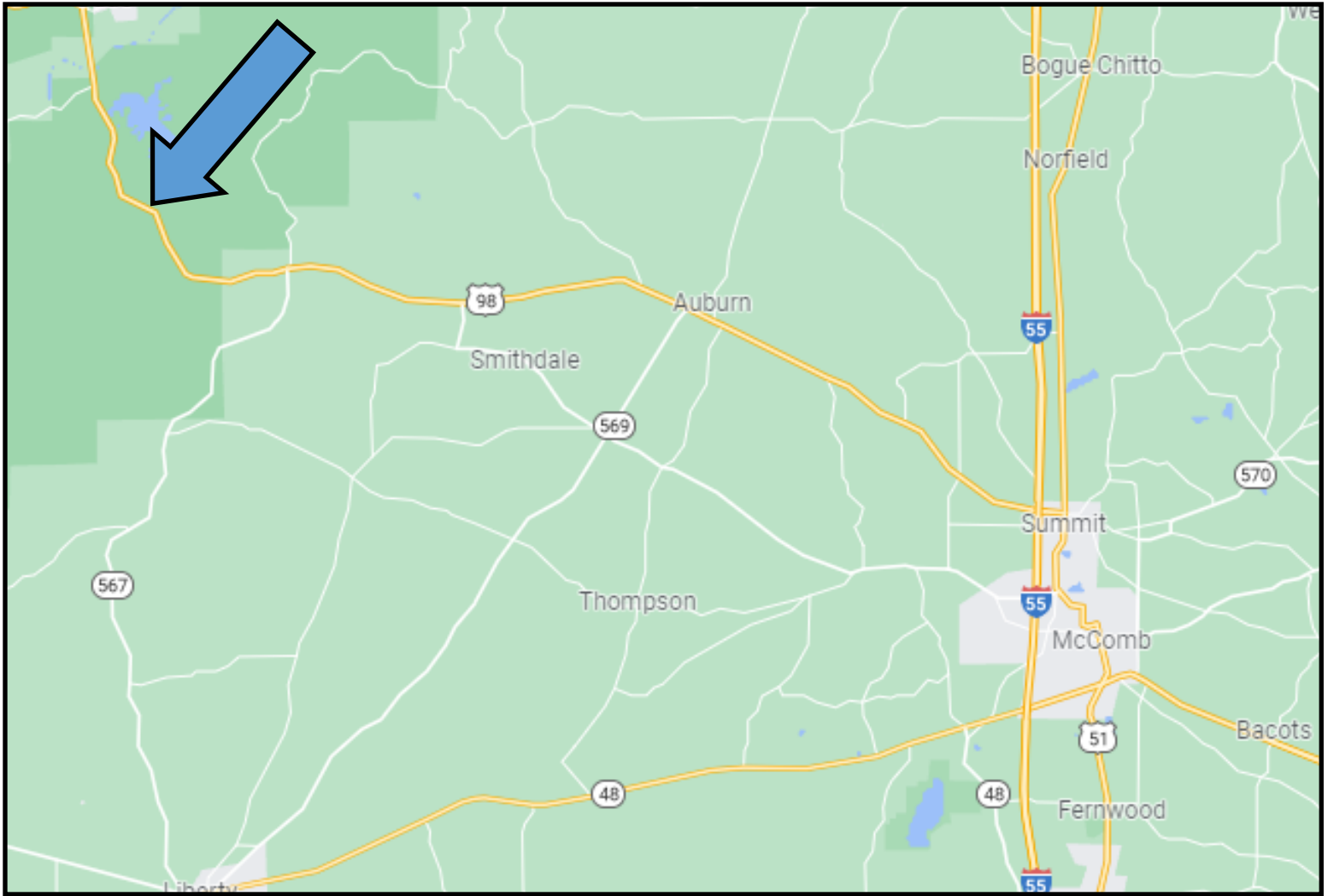
601.990.5070 office | 769.218.7860 cell



**TomSmithLandandHomes.com**

Information is believed to be accurate but not guaranteed.

# DIRECTIONAL MAP



***Directions from I-55 in Summit, MS: Travel west on US-98W for 23.6 miles, the property will be on the left at 5424 US-98W, Meadville MS.***



*call me today!*

LandReport  
2010-2021  
AMERICA'S  
**BEST**  
BROKERAGES

**TRINITY WEBB**, REALTOR®  
Trinity@TomSmithHomes.com  
601.990.5070 office | 769.218.7860 cell



**TomSmithLandandHomes.com**

Information is believed to be accurate but not guaranteed.