



Fixer Upper Home on 0.43+/- Acres Lincoln County, MS



1121 Kraner Lane Brookhaven, MS 39601

Put your inner Chip and Joanna to work on this fixer-upper house situated on a .43+/- acre lot, inside the Brookhaven city limits. The Lincoln County, MS home is on a slab and features two levels of living space, two bedrooms, 2 bathrooms, a stand-alone 2 car garage, and a fenced-in back yard. Come set your eyes on this one and make it your own...the possibilities are endless! Call Sabrina today to schedule a viewing!

Directions from the intersection of US-84 and US-51 in Brookhaven, MS: Travel north on US-51 N for 1.2 miles. Turn right onto Ellen Drive and travel 0.2 miles to Kraner Lane. Turn right onto Kraner Lane and your destination will be on the left in 79 feet.



2010-2021
AMERICA'S
BEST
BROKERAGES

call me today!

SABRINA WOLFF, REALTOR®
Sabrina@TomSmithHomes.com
601.990.5070 office | 601.754.3763 cell



Expect More. Get More.

TomSmithLandandHomes.com

Information is believed to be accurate but not guaranteed.



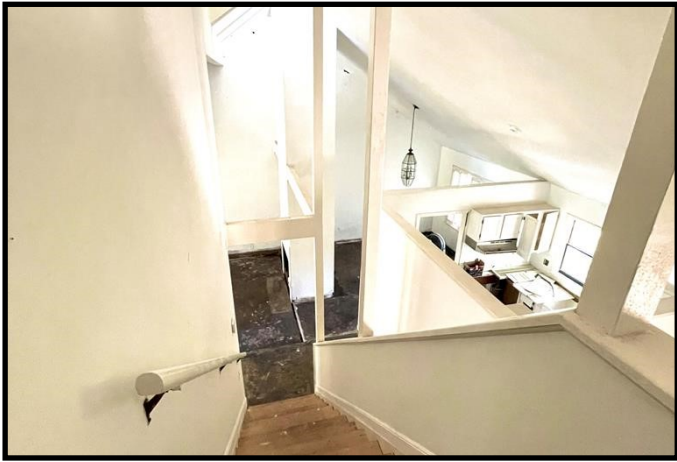
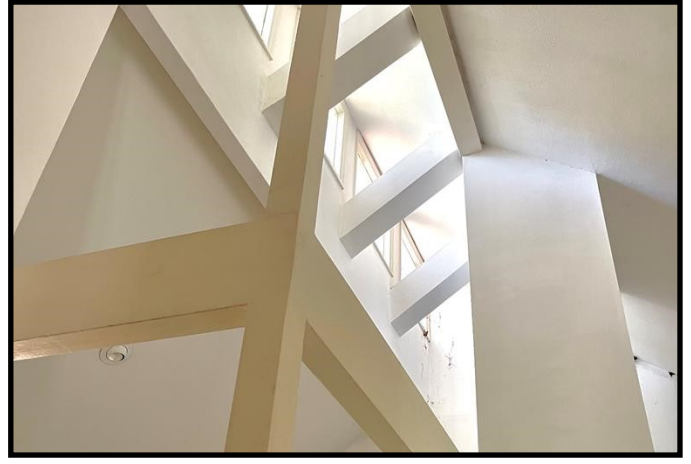
call me today!

SABRINA WOLFF, REALTOR®
 Sabrina@TomSmithHomes.com
 601.990.5070 office | 601.754.3763 cell



TomSmithLandandHomes.com

Information is believed to be accurate but not guaranteed.



call me today!

SABRINA WOLFE, REALTOR®
 Sabrina@TomSmithHomes.com
 601.990.5070 office | 601.754.3763 cell



TomSmithLandandHomes.com

Information is believed to be accurate but not guaranteed.

Aerial Map



call me today!

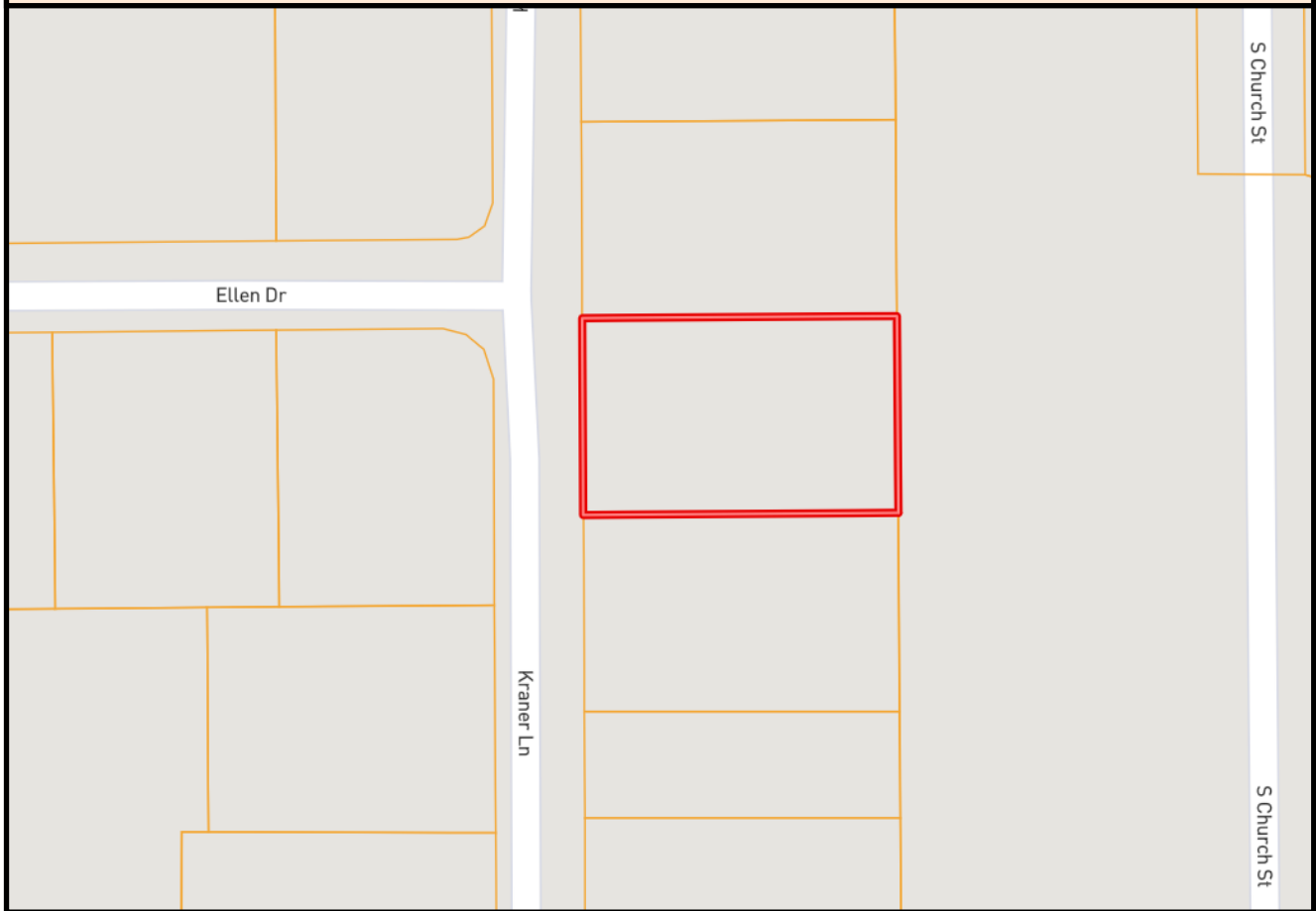
SABRINA WOLFF, REALTOR®
Sabrina@TomSmithHomes.com
601.990.5070 office | 601.754.3763 cell



TomSmithLandandHomes.com

Information is believed to be accurate but not guaranteed.

Ownership Map



call me today!

SABRINA WOLFF, REALTOR®
Sabrina@TomSmithHomes.com
601.990.5070 office | 601.754.3763 cell



TomSmithLandandHomes.com

Information is believed to be accurate but not guaranteed.



Directional Map

1121 Kraner Lane Brookhaven, MS 39601

Directions from the intersection of US-84 and US-51 in Brookhaven, MS: Travel north on US-51 N for 1.2 miles. Turn right onto Ellen Drive and travel 0.2 miles to Kraner Lane. Turn right onto Kraner Lane and your destination will be on the left in 79 feet.



call me today!

SABRINA WOLFF, REALTOR®
Sabrina@TomSmithHomes.com
601.990.5070 office | 601.754.3763 cell



Expect More. Get More.

TomSmithLandandHomes.com

Information is believed to be accurate but not guaranteed.