

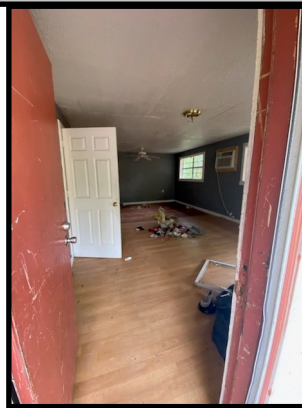
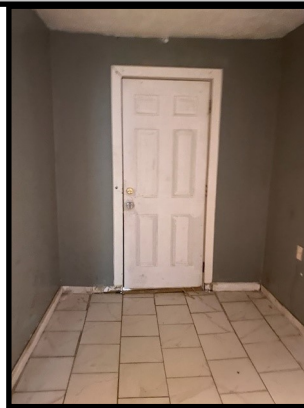
INVESTMENT OPPORTUNITY IN PIKE COUNTY, MISSISSIPPI



Bring your creativity to this Pike County, MS home on North Myrtle Street! Located just four minutes from the town of McComb, this three bedroom, one bath house is structurally sound and could be a great rental property. Take advantage of this fixer-upper; call Trinity today for a showing.

Directions from McComb, MS: Travel east on MS-44E/MS-570E/State Street for .4 miles. Turn left onto N Magnolia Street and travel .6 miles. Turn right onto Avenue L and in .2 miles turn right onto N Myrtle Street. The property will be on the right in 272ft.

\$28,500



NICOLE NEWELL, REALTOR®
Nicole@TomSmithHomes.com
601.990.5070 office | 601.754.3766 cell



Expect More. Get More.

Call us today!



TRINITY WEBB, REALTOR®
Trinity@TomSmithHomes.com
601.990.5070 office | 769.218.7860 cell

TomSmithLandandHomes.com

Information is believed to be accurate but not guaranteed.



AERIAL MAP



Call us today!

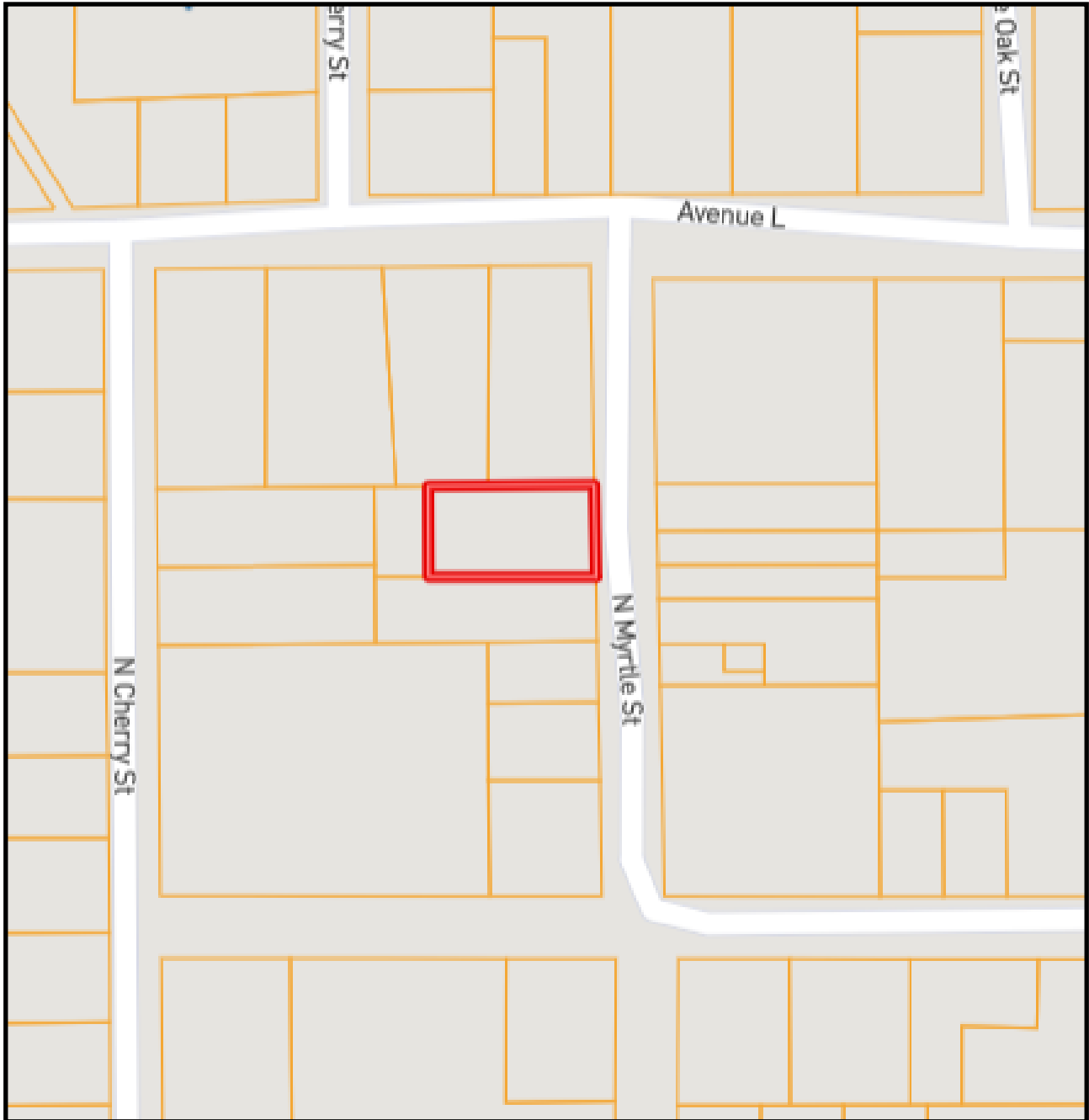


TomSmithLandandHomes.com

Information is believed to be accurate but not guaranteed.



OWNERSHIP MAP



NICOLE NEWELL, REALTOR®
Nicole@TomSmithHomes.com
601.990.5070 office | 601.754.3766 cell



Expect More. Get More.

Call us today!



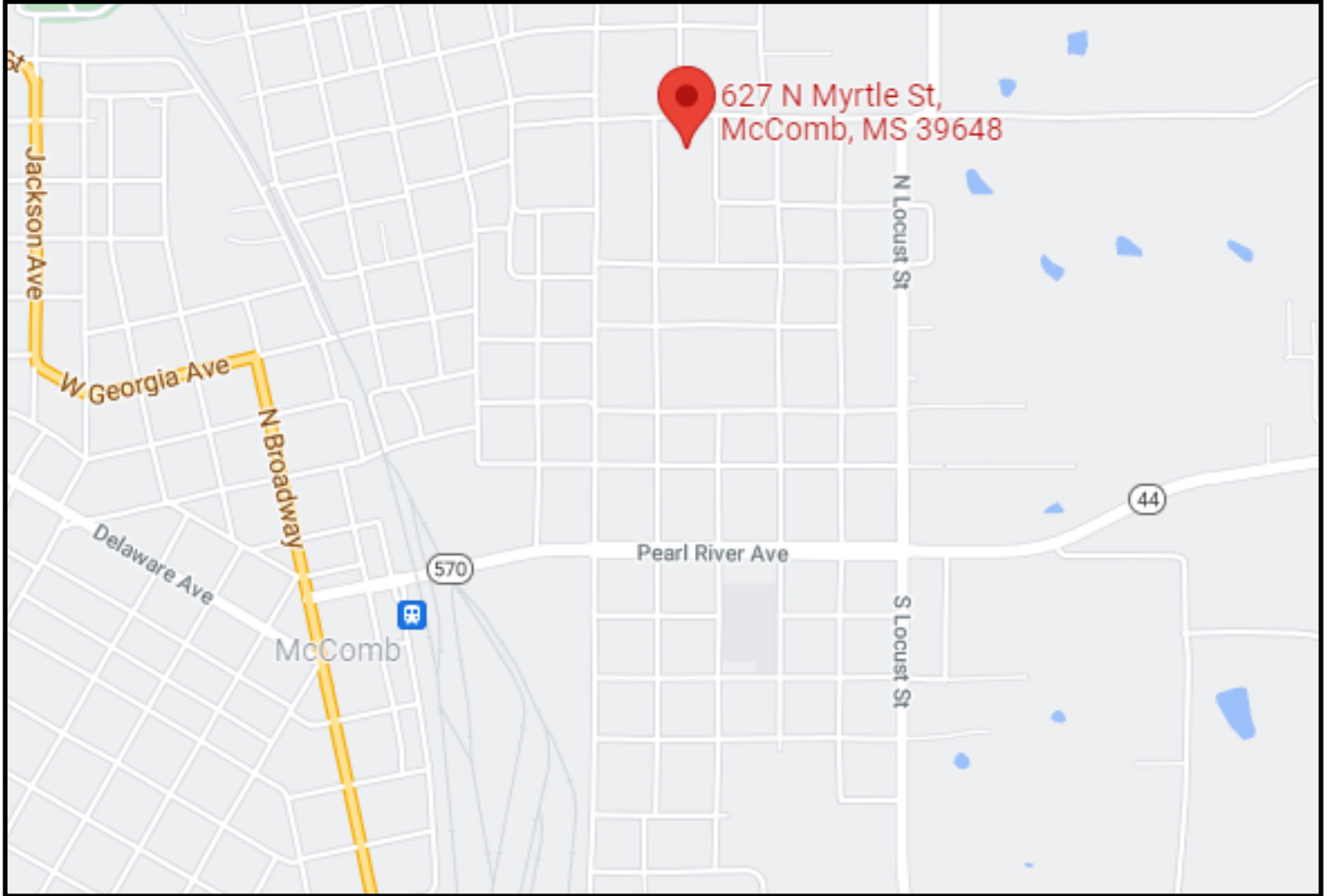
TRINITY WEBB, REALTOR®
Trinity@TomSmithHomes.com
601.990.5070 office | 769.218.7860 cell

TomSmithLandandHomes.com

Information is believed to be accurate but not guaranteed.



DIRECTIONAL MAP



Directions from McComb, MS: Travel east on MS-44E/MS-570E/State Street for .4 miles. Turn left onto N Magnolia Street and travel .6 miles. Turn right onto Avenue L and in .2 miles turn right onto N Myrtle Street. The property will be on the right in 272ft.



NICOLE NEWELL, REALTOR®
Nicole@TomSmithHomes.com
601.990.5070 office | 601.754.3766 cell



Expect More. Get More.

Call us today!



TRINITY WEBB, REALTOR®
Trinity@TomSmithHomes.com
601.990.5070 office | 769.218.7860 cell

TomSmithLandandHomes.com

Information is believed to be accurate but not guaranteed.

