

Affordable Hunting Tract

20+/- Acres in Lincoln County, MS



\$55,000

Are you looking for an affordable, small hunting tract in Lincoln County, MS? This 20+/- acre property may be it! The property features a live creek, hilly terrain, established food plots and mixed timber. Currently, there is no access to the property but it is located a short distance off Old Red Star Drive, just south of the Copiah/Lincoln County line. The seller is working with the adjoining land owner to gain legal access. For additional information, contact Eli Ferguson!

Directions from Brookhaven, MS: From the north Brookhaven exit off I55 travel west on Dunn-Ratliff Road for .7 miles and turn right onto Old Red Star Drive. Travel for 7 miles and the property will be on the right.



call me today!

ELI FERGUSON, REALTOR®

Eli@TomSmithLand.com

601.990.5070 office | 601.757.7117 cell



TomSmithLandandHomes.com

Information is believed to be accurate but not guaranteed.



call me today!

ELI FERGUSON, REALTOR®

Eli@TomSmithLand.com

601.990.5070 office | 601.757.7117 cell

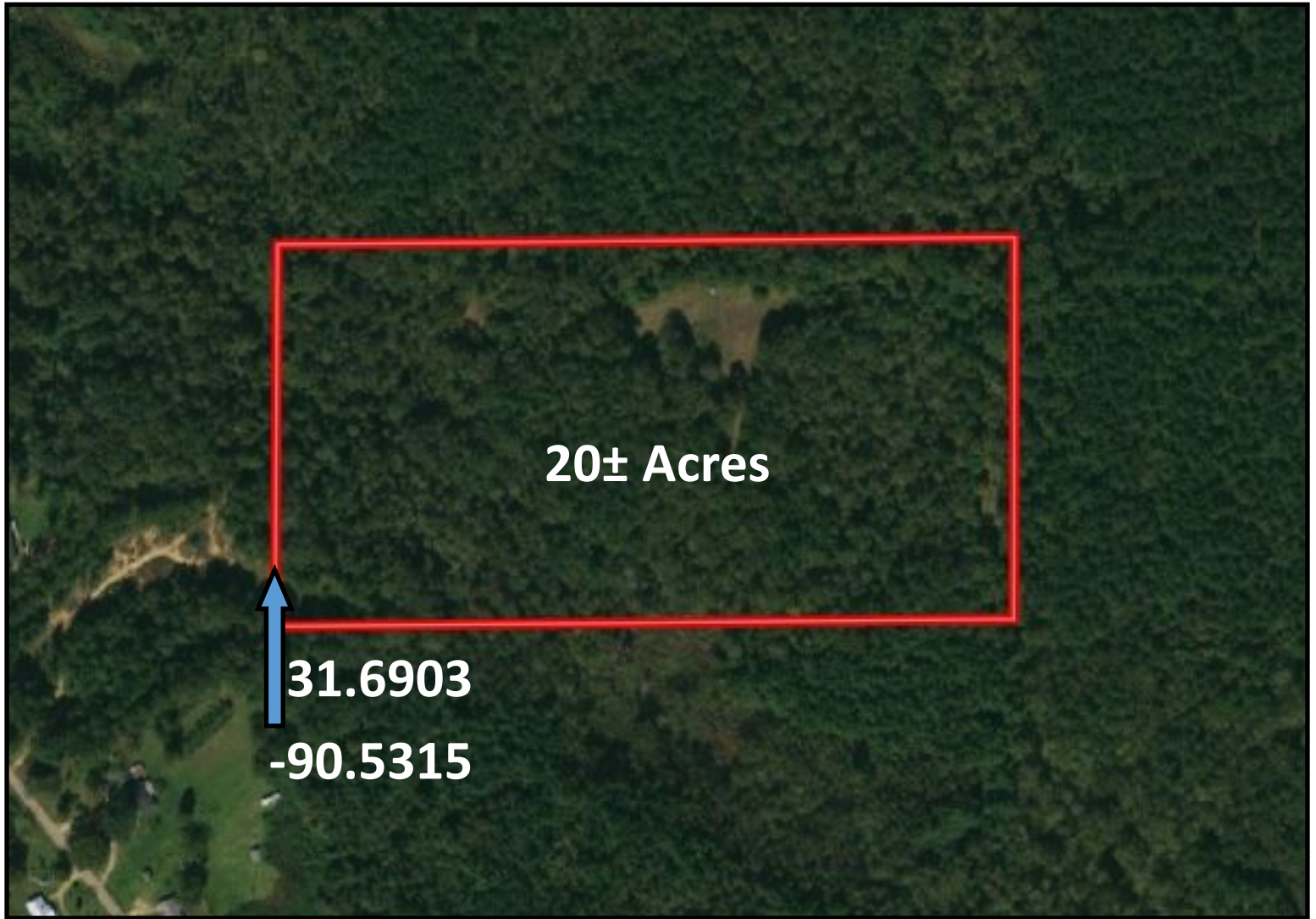


Expect More. Get More.

TomSmithLandandHomes.com

Information is believed to be accurate but not guaranteed.

AERIAL MAP



call me today!

ELI FERGUSON, REALTOR®

Eli@TomSmithLand.com

601.990.5070 office | 601.757.7117 cell

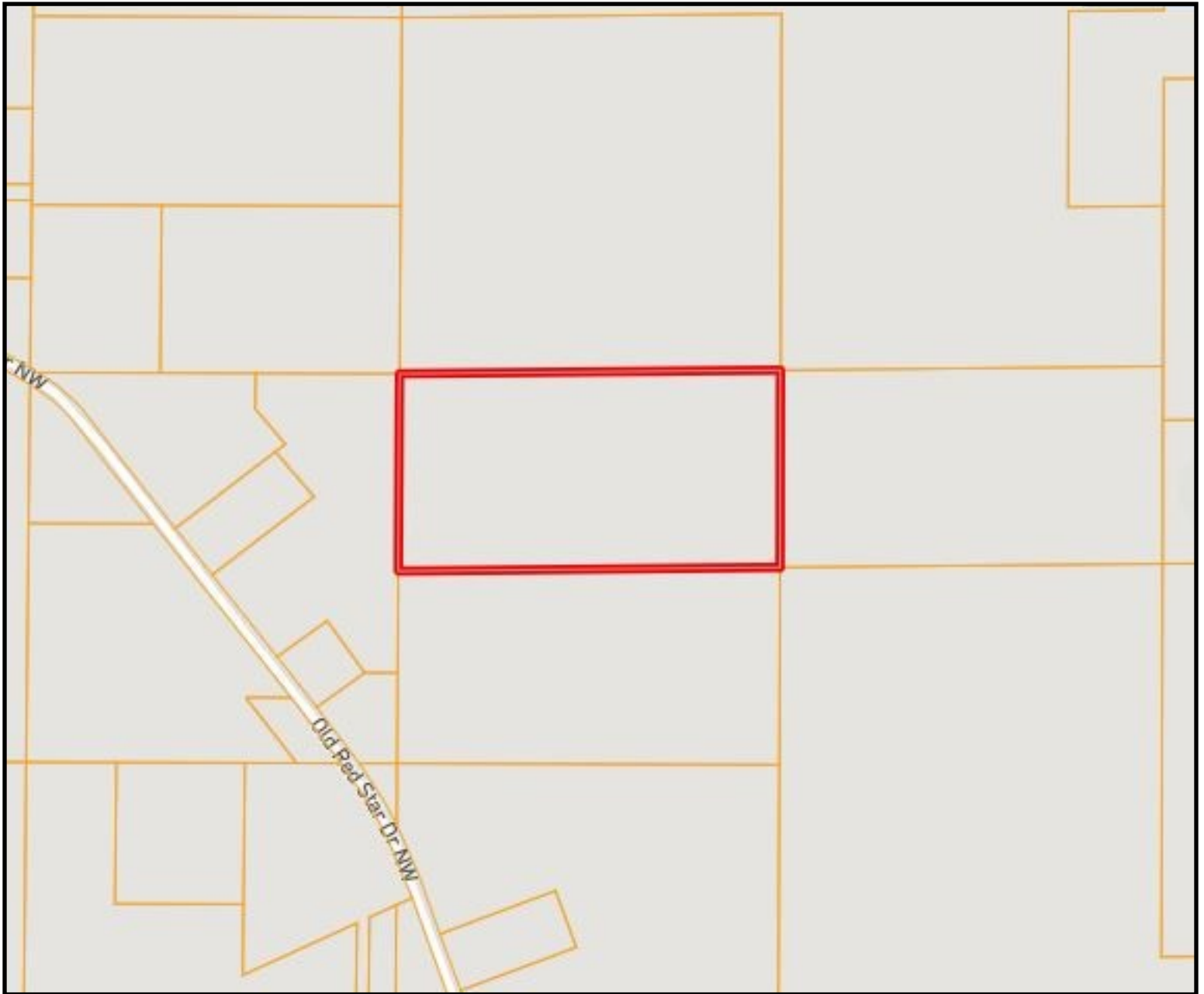


Expect More. Get More.

TomSmithLandandHomes.com

Information is believed to be accurate but not guaranteed.

OWNERSHIP MAP



LandReport
2010-2021
AMERICA'S
BEST
BROKERAGES

Proud to be
C2EX
endorsed!

call me today!

ELI FERGUSON, REALTOR®

Eli@TomSmithLand.com

601.990.5070 **office** | 601.757.7117 **cell**

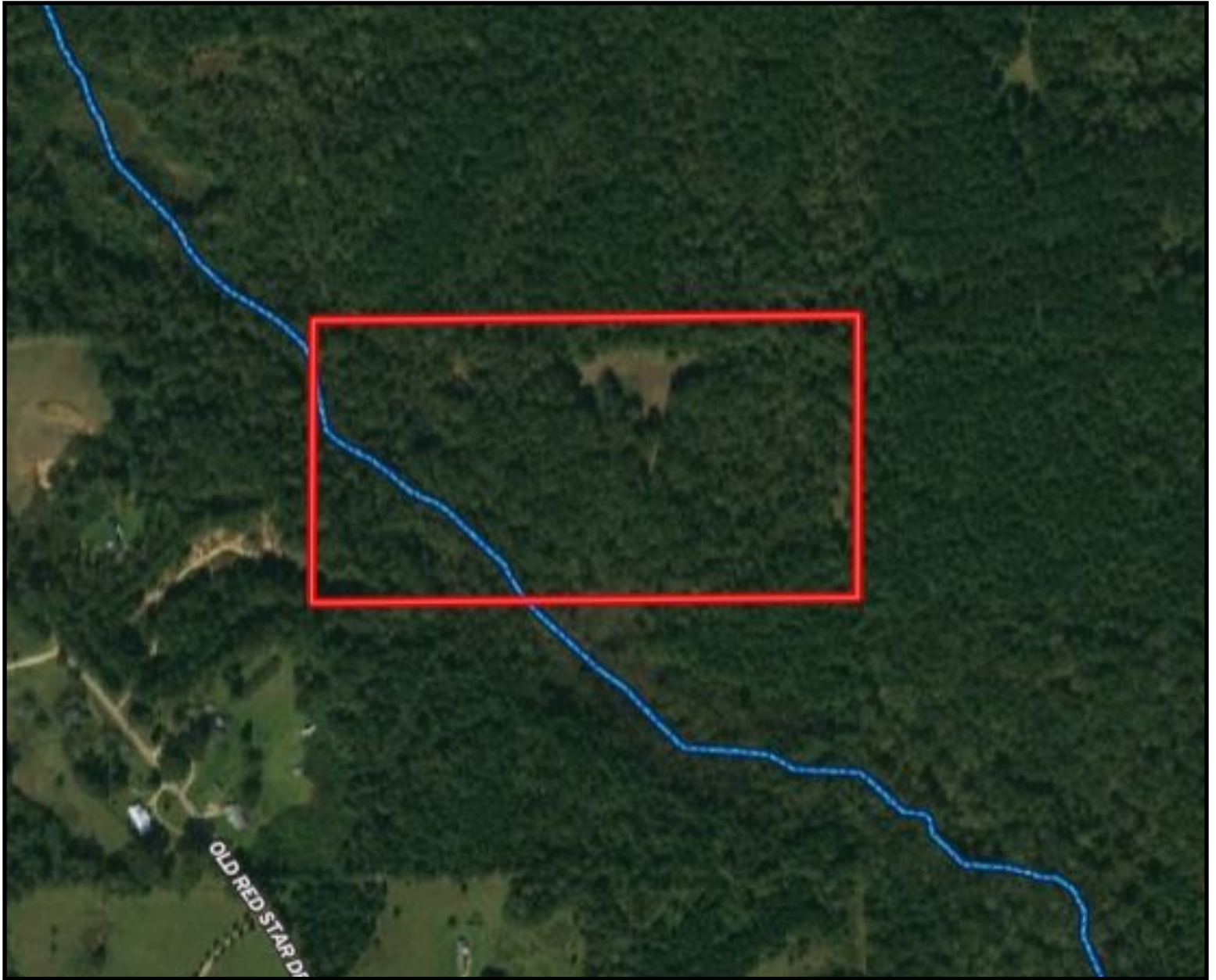


Expect More. Get More.

TomSmithLandandHomes.com

Information is believed to be accurate but not guaranteed.

FLOOD MAP



call me today!

ELI FERGUSON, REALTOR®

Eli@TomSmithLand.com

601.990.5070 office | 601.757.7117 cell



TomSmithLandandHomes.com

Information is believed to be accurate but not guaranteed.

TOPO MAP



2010-2021
AMERICA'S
BEST
BROKERAGES

Proud to be
C2EX
endorsed!

call me today!

ELI FERGUSON, REALTOR®

Eli@TomSmithLand.com

601.990.5070 office | 601.757.7117 cell

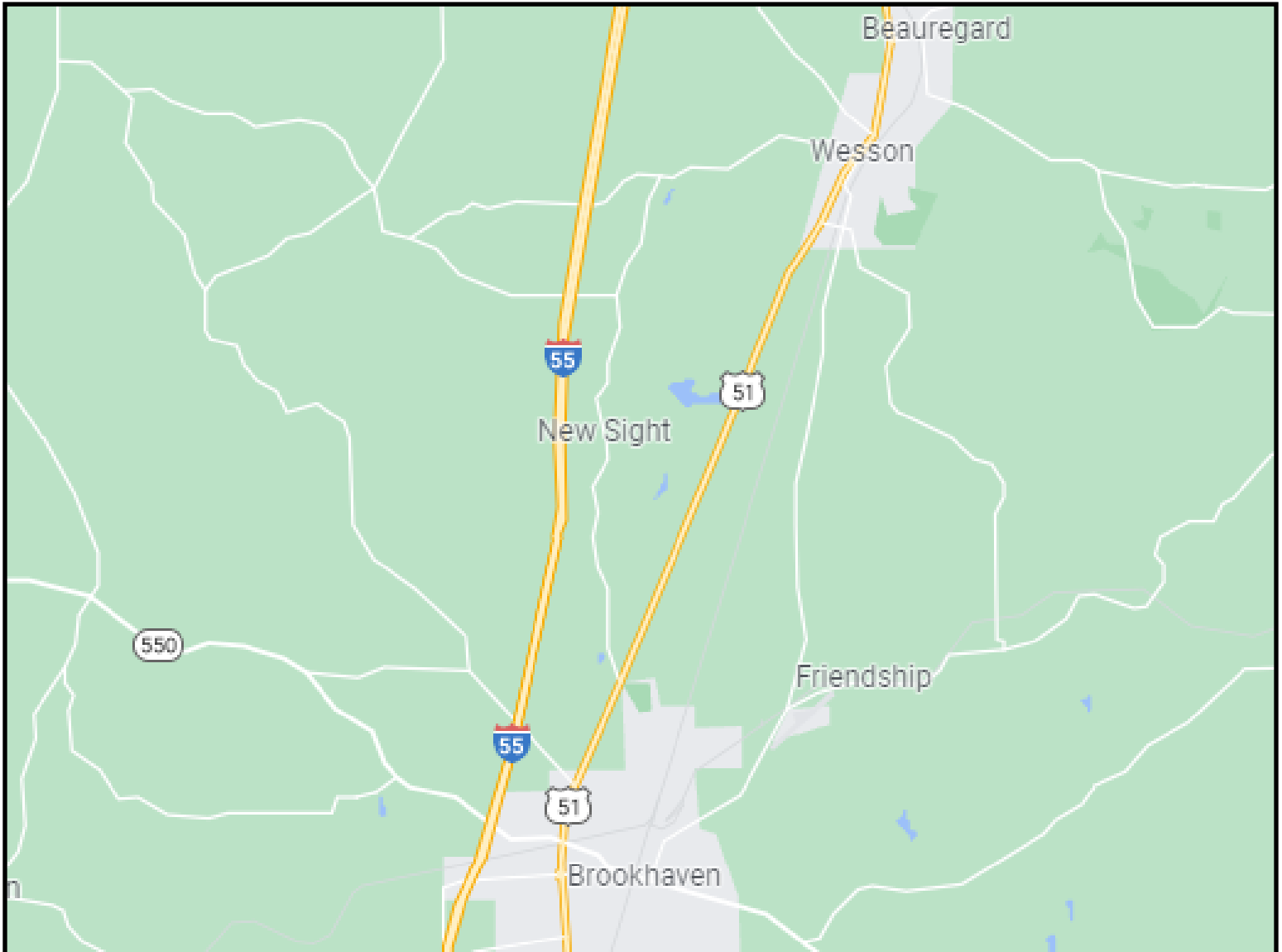


Expect More. Get More.

TomSmithLandandHomes.com

Information is believed to be accurate but not guaranteed.

DIRECTIONAL MAP



Directions from Brookhaven, MS: From the north Brookhaven exit off I55 travel west on Dunn-Ratliff Road for .7 miles and turn right onto Old Red Star Drive. Travel for 7 miles and the property will be on the right.



call me today!

ELI FERGUSON, REALTOR®

Eli@TomSmithLand.com

601.990.5070 office | 601.757.7117 cell



TomSmithLandandHomes.com

Information is believed to be accurate but not guaranteed.